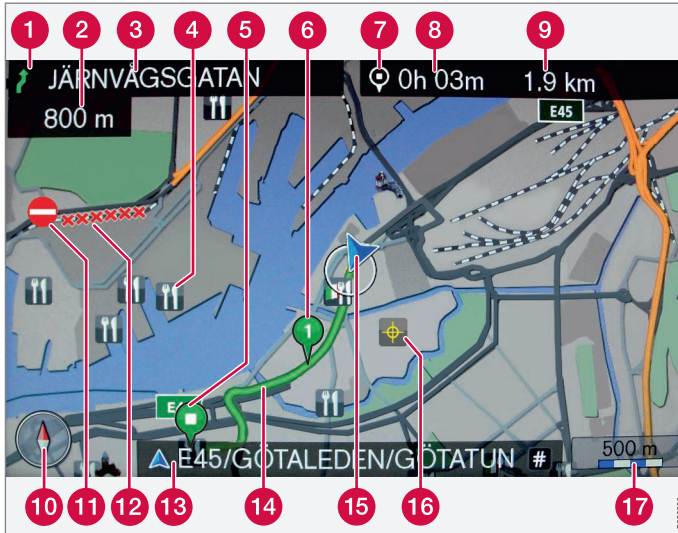




WEB EDITION
SENSUS NAVIGATION



Text and symbols on the screen

- 1 Event at next guidance point
- 2 Distance to next guidance point
- 3 Name of next road/street
- 4 Facility (Restaurant)
- 5 Planned route final destination
- 6 Planned route intermediate destination
- 7 Symbol for destination/final destination
- 8 Calculated arrival time at final destination
- 9 Calculated remaining distance to destination
- 10 Compass
- 11 Traffic information
- 12 Section covered by traffic information
- 13 Current road/street name - at car's current position (15)
- 14 Planned route
- 15 The car's current position
- 16 Stored location
- 17 Map scale

Road type	Colour / paint
Motorway	 Orange
Primary road	 Dark grey
Smaller primary road	 Grey
Ordinary road	 Light grey
Local road	 White



SENSUS NAVIGATION



Volvo's navigation system is a traffic information and road navigation system developed by Volvo. Sensus Navigation guides you to a destination and provides information along the route. It informs of situations that can affect the drive, such as accidents, road works and shows alternative routes.

It is possible to create an itinerary, search for facilities along the route, store special places, etc. Sensus Navigation displays the car's exact posi-

tion and in event of a wrong turning always corrects to guide you to the destination.

You will see just how intuitive it is to use. Try it out. In order to get along with the system we recommend that you familiarise yourself with the information in this manual.

By facilitating accessibility and shortening driving distances, Volvo's navigation system also contributes to a better environment.





01 Get started now

Activating the system.....	9
Controls - quick guide.....	9
Guidance to a destination.....	10

01



02 Get to know Sensus Navigation

Before starting.....	13
Owner's manual.....	13

02



03 Controls

Controls - overview.....	16
Controls - general.....	18
Controls - centre console.....	18
Controls - steering wheel.....	18
Controls - remote control.....	19

03



04 Voice recognition

General about Voice control.....	21
Use the voice command.....	22
Help functions and settings for voice recognition.....	22
Language options for voice recognition...	24

04



05 Daisy wheel

Entering and selecting options.....	27
-------------------------------------	----

05



06 Maps, compass and voice guidance

Map image - some examples.....	30
Compass.....	32
Voice guidance.....	32

06



07 Menus

General information about menus.....	34
Shortcuts.....	34
Main menu.....	35
Scroll menu.....	36
Menu tree.....	37

07



08 Specify a destination

General information about entering a destination.....	41
Search via Home.....	41
Search via Address.....	42
Search via POI.....	44
Search via Stored location.....	45
Search via Previous destinations.....	46
Search via Internet.....	46
Search via Postcode.....	47
Search via Latitude/Longitude.....	47
Search via Point on the map.....	48
Search via Travel guide.....	49

08



09 Itinerary

Itinerary - general.....	51
Intermediate destinations in the itinerary..	52

09



10 Route

Route - avoid.....	54
Alternative routes and route overview.....	54
Detailed route information.....	55
Map of the remaining route.....	56
Record a route.....	57

10



11 Settings

Route options.....	59
Route options - avoid area.....	61
Route options - adapt route.....	62
Map options.....	63
Guiding options.....	66
System information.....	69
FAV button.....	70
Importing/exporting stored locations.....	71

11



12 Traffic information

Traffic information.....	73
Traffic information - without specified destination.....	73
Traffic information - with specified destination.....	74
Extent of traffic problem.....	76

12



13 Symbols on the map

Points of Interest - POI..... 79

13



14 Questions and answers

Frequently asked questions..... 82

14



15 Map and system information

Maps - content..... 85

Updating the maps..... 85

License agreement..... 86

Copyright..... 86

15



16 Alphabetical Index

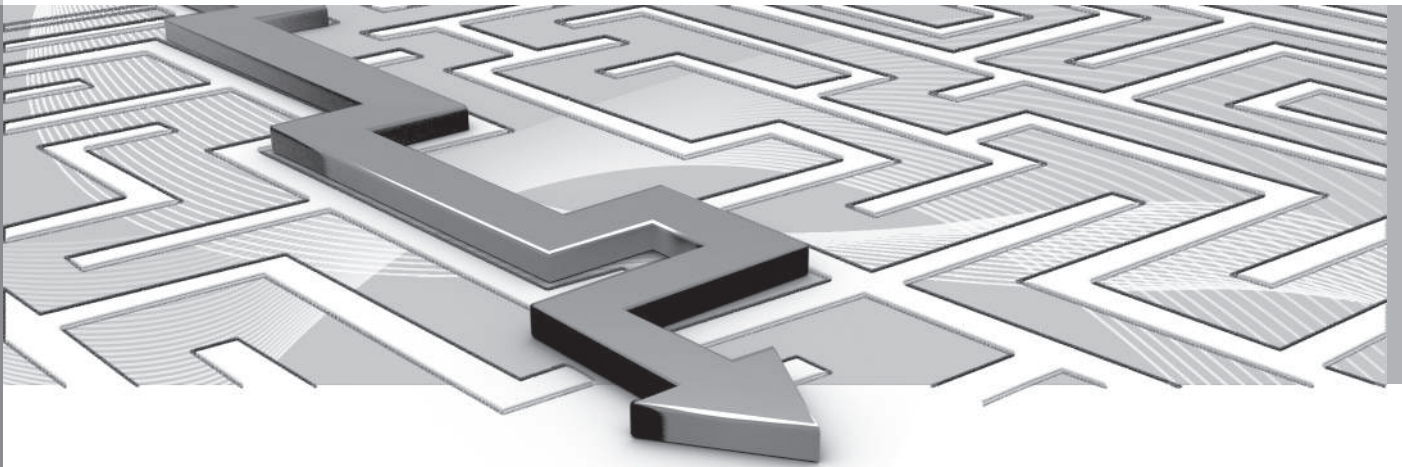
Alphabetical Index..... 90

16

01



GET STARTED NOW



Activating the system

The car's electrical system must first be activated:

On

1. Push the remote control key into the ignition switch.
2. If the navigation system does not start within a few seconds - press the centre console's **NAV** button.

The system may then need several seconds to detect the position and movement of the car - following which, the map is shown covering the current geographic area where the car is symbolised by a blue triangle.

WARNING

Observe the following.

- Direct all your attention to the road and make sure that all your concentration is on driving.
- Follow applicable traffic legislation and drive with good judgment.
- Due to weather conditions or time of year affecting the road conditions, some recommendations may be less reliable.

Off

The navigation system cannot be deactivated, but instead operates in the back-

ground - it is not deactivated until the remote control key is removed from the ignition switch.

NOTE

The navigation system is also available when the engine is switched off. When the battery level gets too low the system switches off.

Related information

- Guidance to a destination (p. 10)
- Controls - quick guide (p. 9)
- Before starting (p. 13)

Controls - quick guide

Volvo's GPS navigator can be operated in several ways:

- With the steering wheel's right-hand keypad (p. 18).
- With the controls in the centre console (p. 18).
- With a remote control (p. 19).
- With voice recognition (p. 21).

For function description, see (p. 18).

Main commands

The steering wheel keypad is used in the following two examples for giving guidance to an Address or POI.





01 Get started now

01



- Scroll/select in the menus with the **Thumbwheel** (1).
- Activate selections with a brief **press** on the **Thumbwheel** (abbreviated in the following example with "+ **OK**").
- Go back in menus and/or undo using **EXIT** (2).

Centre console controls

If the **centre console keypad** is used instead of the steering wheel keypad then the following applies:

Keypad in steering wheel	Centre console
Turn the Thumbwheel	Turn TUNE
Press the Thumbwheel	Press OK
Press EXIT	Press EXIT

Related information

- Activating the system (p. 9)
- Guidance to a destination (p. 10)

Guidance to a destination

Set guidance to the desired address or point of interest.

The navigation system calculates the route, travel time and distance to the selected destination. The system gives guidance and instructions for junctions, etc.

If there is a deviation from the planned route outline during the journey then the system automatically calculates a new route outline.

Search address

Step	Screen/ menu	Action
1	If the screen does not show a map image, proceed as follows:	Press the centre console button NAV .
2	Map	Press NAV to display the " Short-cuts " menu.
3	Menu Short-cuts , see (p. 34).	Mark Set address + OK .
4	Address	Mark City : + OK .

Step	Screen/ menu	Action
5	Daisy wheel - see (p. 27).	Turn the thumb-wheel to select a character and enter it by clicking OK - a list of options emerges on the screen.
6	Daisy wheel	Select the appropriate district from the list + OK .
7	The screen shows the same view as (4) with City : filled-in.	Mark Set single destination + OK .
8	Map	Guidance starts - follow the instructions.

For more detailed information on searching destinations with address, see (p. 42).

Search POI

POI is also denominated as "point of interest" and "facility".



Step	Screen/ menu	Action
1	If the screen does not show a map image, proceed as follows:	Press the centre console button NAV .
2	Map	Press NAV to display the "Shortcuts" menu.
3	Menu Shortcuts , see (p. 34).	Mark Set point of interest + OK .
4	Point of interest (POI)	Select e.g. Near the car + OK .
5	Menu Near the car and Results list .	Select e.g. Near-est tourist attraction + OK .
6	Results list	Select the desired option from the list + OK .

Step	Screen/ menu	Action
7	Pop-up menu	Mark Set single destination + OK .
8	Map	Guidance starts - follow the instructions.

For more detailed information on searching destinations with POI, see (p. 44) and (p. 79).

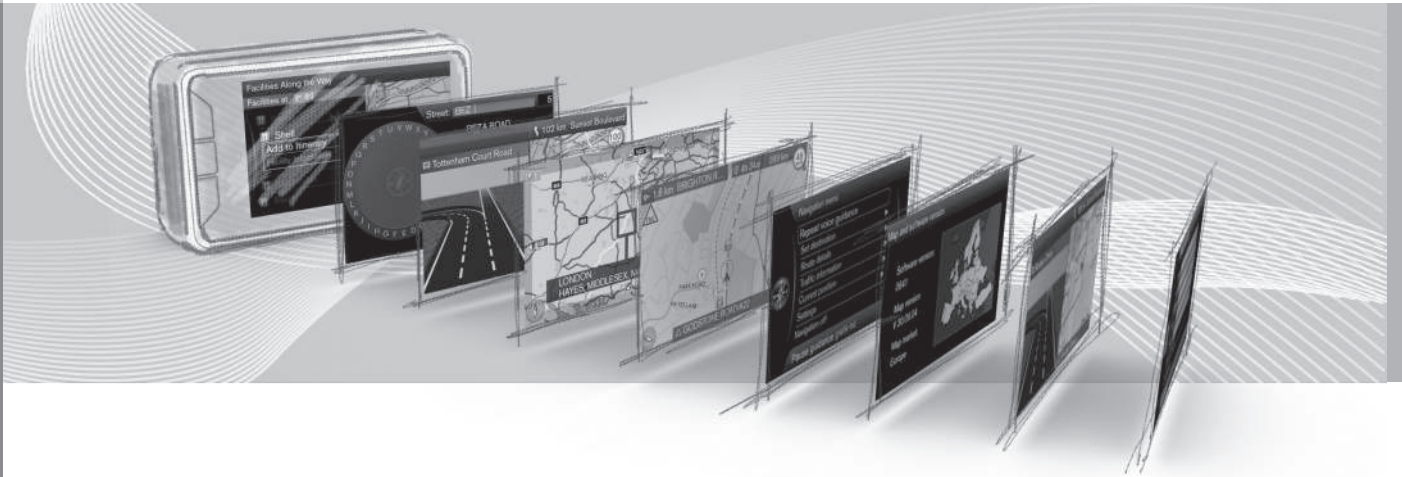
Related information

- Activating the system (p. 9)
- Controls - quick guide (p. 9)

02



GET TO KNOW SENSUS NAVIGATION





Before starting

Important information to read before using the navigation system.

General

Volvo Sensus Navigation uses reference system WGS84, which gives longitude and latitude positions.

The navigation system can be used without a destination being selected.

Points to remember

The navigation system provides road information which guides to a preset destination. However, all of the recommended guidance is not always reliable, since situations may arise that are outside the capacity and judgement of the navigation system, such as sudden changes in the weather.



WARNING

Observe the following.

- Direct all your attention to the road and make sure that all your concentration is on driving.
- Follow applicable traffic legislation and drive with good judgment.
- Due to weather conditions or time of year affecting the road conditions, some recommendations may be less reliable.

Settings

The system is supplied with default settings, but starts with the settings last used.

Related information

- Owner's manual (p. 13)
- Activating the system (p. 9)

Owner's manual

A good way to get to know Sensus Navigation is to read this owner's manual, ideally before the first time the system is used. It provides the opportunity to become familiar with the functions, get advice on how the system can best be operated in different situations and how all of its refinements can be used to best effect.

Heading level 1

Heading level 2

The content under this heading is a part of Heading level 1.

General information about the owner's manual

There is a quick guide for the user who wants to get started right away, see (p. 9).

For a more in-depth description of operation and options, as well as the selection of settings to the destination, the recommendation is to read the manual in combination with practical use.

Menu options/Search paths

All options that can be selected on the screen are marked in this manual with slightly larger and grey-shaded text, e.g. **Set destination**.

Search paths in the menu tree are stated as e.g.:

Set destination → **Address** → **City**:



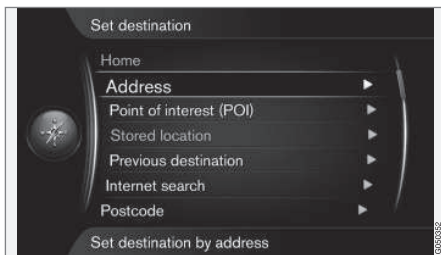
02 Get to know Sensus Navigation



English text

The images in the owner's manual are common to all markets and languages, so where they contain text it is mainly in English.

In order to facilitate the user's understanding of the images and their menu options with search paths linked to the manual's text, the English word for the image is given in brackets immediately after the intended text/phrase in the language of the manual:



Set destination → Address

(Set destination > Address)¹

Special text

WARNING

Warning texts appear if there is a risk of injury.

IMPORTANT

"Important" texts appear if there is a risk of damage.

NOTE

NOTE texts give advice or tips that facilitate the use of e.g. features and functions.

Footnote

There is information in the owner's manual that is added as a footnote at the bottom of the page or in direct association with a table. This information is a supplement to the text to which it refers via the footnote number/letter.

Options

All types of options/accessories are marked with an asterisk (*).

In addition to standard equipment, this manual also describes options (factory fitted equipment) and certain accessories (retrofitted extra equipment).

The equipment described in the owner's manual is not available in all cars - they have different equipment depending on adaptations for the needs of different markets and national or local laws and regulations.

In the event of uncertainty over what is standard or an option/accessory - contact a Volvo dealer.

Changes in the owner's manual

The specifications, design features and illustrations in this manual are not binding.

We reserve the right to make modifications without prior notice.

© Volvo Car Corporation

Related information

- Before starting (p. 13)
- Activating the system (p. 9)
- Controls - overview (p. 16)

¹ Not in English and Chinese manuals - but shown here as an example.

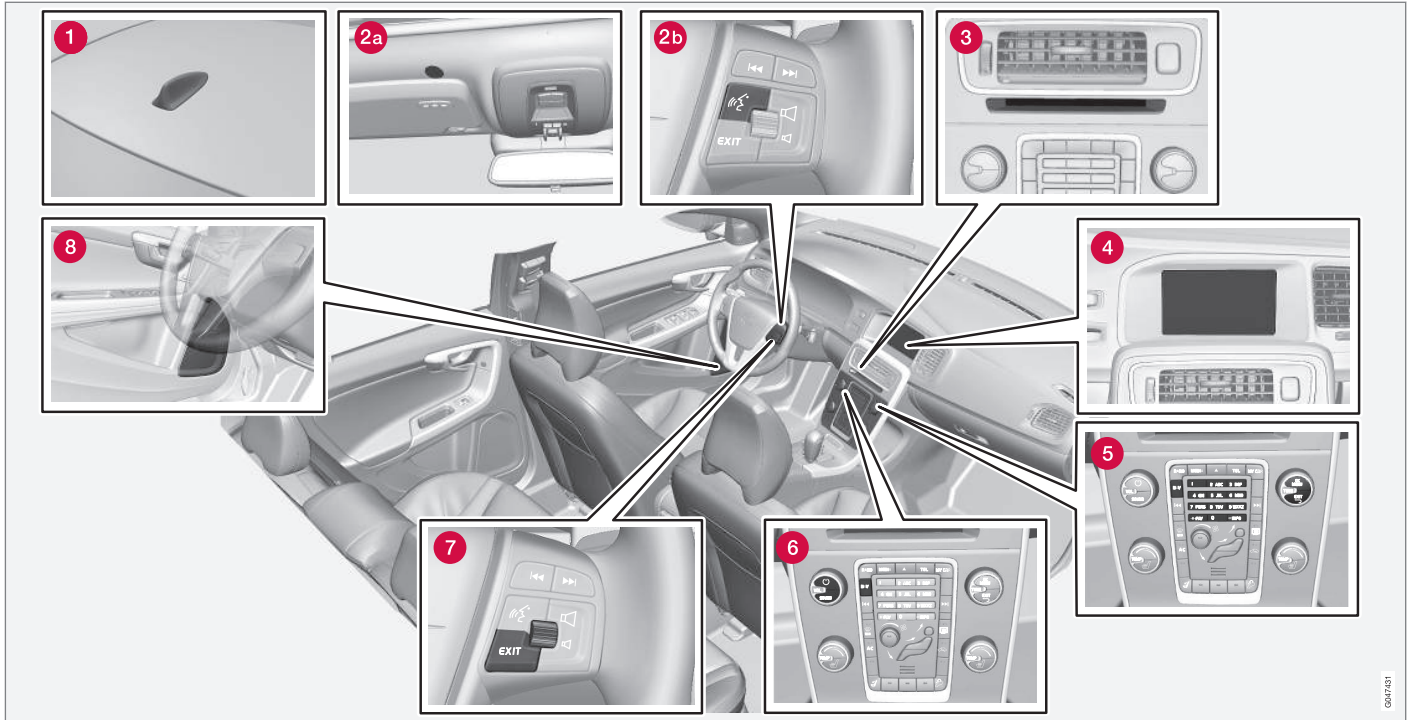
03

CONTROLS





Controls - overview



NOTE: The figure is schematic - details may vary depending on car model and market.

1 Antenna for GPS

The antenna is integrated into the roof antenna.

2 Voice recognition

Some procedures in the Navigation system can also be voice controlled. The microphone

[2a] is fitted in the ceiling and the activation button [2b] is located on the right-hand key-

04/2/01



pad on the steering wheel. For more information, see (p. 21).

3 Main unit

The main unit is fitted in and behind the centre console and includes the following functions:

- Calculating the position of the car (p. 30)
- Calculating the route to the specified destination (p. 41)
- Handling traffic information (p. 73)
- Voice guidance (p. 32)

Receiver for GPS and traffic information (TMC¹) is integrated into the main unit.

Positioning

The car's speed sensor and a gyro calculate the current position and the direction of travel of the car using signals from the GPS satellite system.

The advantage of this concept is that the Navigation system registers and calculates the route outline even if the GPS signal is temporarily lost, e.g. when driving through a tunnel.

Traffic information

TMC¹ is a standardised coding system for traffic information. The receiver automatically

searches for the correct frequency. Reception takes place via the FM antenna.

NOTE

TMC is not available in all areas/countries. The system's coverage area is under constant construction and updating may sometimes be necessary.

4 Screen

The screen displays maps and provides detailed information on route type, distance, menu, etc.

Screen care

Clean the screen with a soft, lint-free rag, lightly moistened with a mild window cleaning agent.

IMPORTANT

Do not place any objects in front of the GPS navigator's display screen - the surface could then be scratched. Mobile phones can also interfere with the display screen's function.

5 Keypad, centre console

As an alternative to the steering wheel keypad, the centre console's numerical keypad can be used in combination with buttons **OK/MENU, TUNE** and **EXIT** to scroll between different menu options, confirm options or go

back in menus. For more information, see (p. 18).

6 Volume control and IR receiver

Use the audio system volume control during an ongoing voice message to adjust the volume, see (p. 32). The volume can also be changed in the menu system.

Point the remote control towards the centre console during use - its IR receiver is located there.

7 Keypad, steering wheel

A keypad is located on the right-hand side of the steering wheel. Use it to scroll between different menu options, to confirm selections or to move back in menus. For more information, see (p. 18).

8 Speakers

Navigation system audio uses the front loudspeakers.

Related information

- Controls - general (p. 18)

¹ Traffic Message Channel



Controls - general

General information about the navigation system's controls.

The navigation system is operated by controls on the centre console (p. 18), steering wheel keypad (p. 18) or using a remote control* (p. 19). The three different control unit keypads have common functions but differ in appearance and operation. The design may also vary depending on market.

Voice recognition

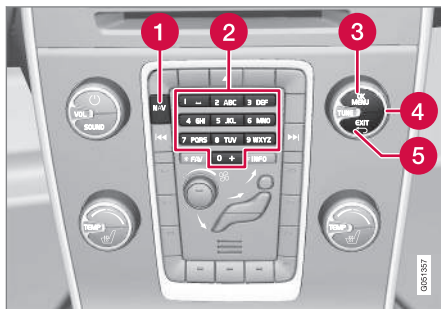
The system can also be controlled by voice recognition using specific commands, see (p. 21).

Related information

- Controls - overview (p. 16)
- Controls - centre console (p. 18)
- Controls - steering wheel (p. 18)
- Controls - remote control (p. 19)
- General about Voice control (p. 21)

Controls - centre console

The navigation system can be operated with the centre console's numerical keypad.



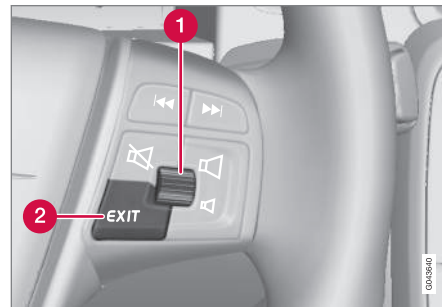
NOTE: The figure is schematic - details may vary depending on car model and market.

- 1 NAV** activates the GPS navigator on the screen. With GPS activated, a quick menu opens/closes, (p. 34).
- 2 Numerical keys** enter data for address and name search, and scroll on the map, see (p. 27) and Scroll menu (p. 36).
- 3** Press **OK/MENU** once to confirm or activate a selection. Described in this manual with the "**OK button**" or "**+ OK**".
- 4** Turning **TUNE** scrolls between different menu options or zooms when the map image is shown. Described in this manual with the "**TUNE knob**".
- 5** Press **EXIT** once to go back in the menu structure or undo a selection.

Controls - steering wheel

The navigation system can be operated with the keypad and thumbwheel on the steering wheel.

The steering wheel's keypad is available in several versions depending on market and selection of audio system.



Steering wheel right-hand keypad.

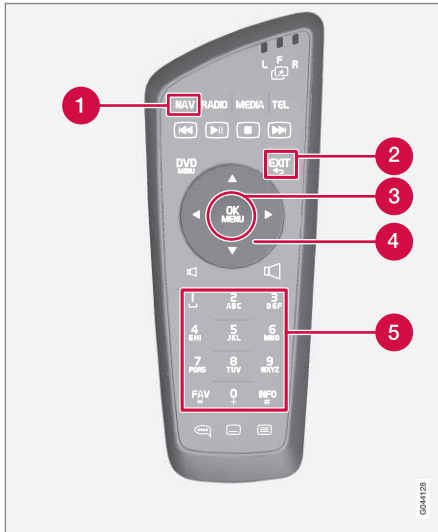
- 1 Turn** the thumbwheel to scroll between different menu options or zoom when the map image is shown.
- 1 Press** the thumbwheel to confirm/activate a selection.
- 2 EXIT** goes back in the menu structure or undoes a selection.



Controls - remote control

The remote control can be used to operate several different functions in the car - only the related navigation system is described here.

- Point the remote control at the centre console during use.



Remote control keypad.

- NAV** activates the GPS navigator on the screen. With GPS activated, a quick

menu opens/closes. For more information, see (p. 34).

- EXIT** goes back in the menu structure or undoes a selection.
- OK/MENU** confirms or activates a selection. Described in this manual with the "OK button" or "+ OK".
- Arrow keys** move the menu cursor.
- Numerical keys** enter data for address and name search, and scroll on the map.

i NOTE

If the remote control does not work, try replacing with new AA/LR6 batteries first of all.

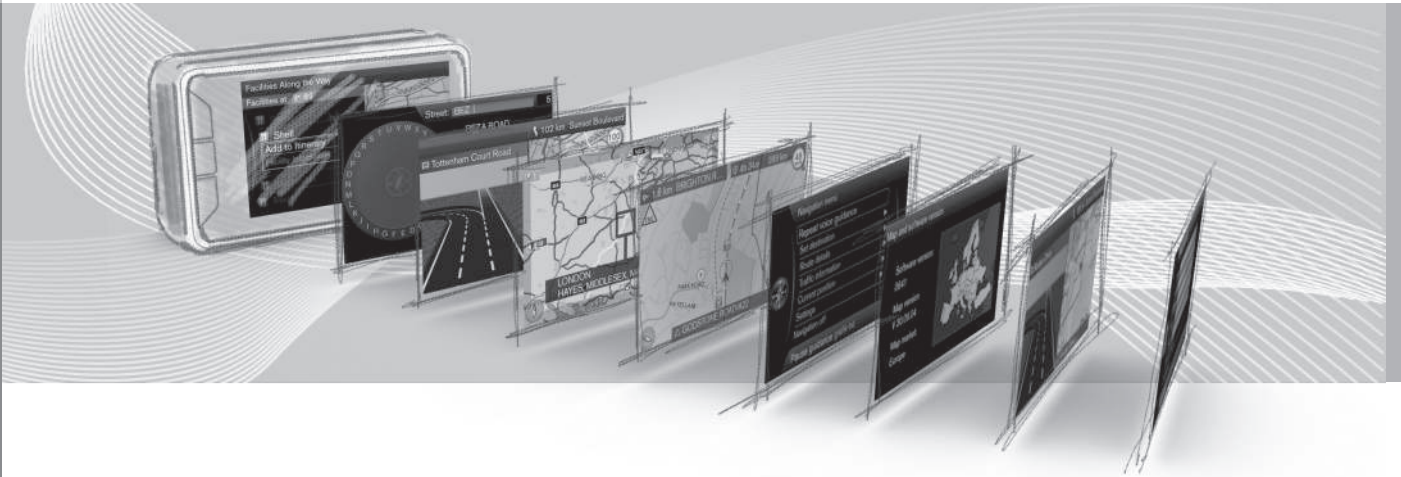
⚠ WARNING

Store the remote control and other similar objects in one of the storage compartments - in the event of sudden braking or a collision such objects could cause personal injury or material damage.

04



VOICE RECOGNITION





General about Voice control

Voice control means that certain functions in the navigation system can be activated by the spoken word.

Voice commands (p. 22) offer convenience and help the driver to avoid distraction - instead the driver can concentrate on driving and focus attention on the road and traffic situation.

WARNING

The driver always holds overall responsibility for driving the vehicle in a safe manner and complying with all applicable rules of the road.

The Voice control uses the common microphone of the hands-free system - the driver receives responses to the Voice control through the vehicle's loud speakers.

The microphone is positioned in the ceiling in front of the driver for optimal take-up of the driver's speech - it can however be disturbed by/pick up loud voices from passengers.

Handling



Keypad in steering wheel.

- 1 Button for voice control

Activating the system

- A short press on the steering wheel button (1) activates the voice recognition system - a voice command can be given after the tone.

Think of the following when using the voice recognition system:

- For commands: - Speak after the tone with a normal voice at a normal tempo
- The car's doors, windows and sunroof must be closed
- Avoid background noise in the passenger compartment.

NOTE

If the driver is unsure of which command to use, he/she can say "Help" - the system then responds with several different commands which can be used in the current situation.

Voice commands can be disabled by:

- press **EXIT**
- hold the steering wheel button for Voice recognition depressed for several seconds.

Related information

- Use the voice command (p. 22)
- Help functions and settings for voice recognition (p. 22)
- Language options for voice recognition (p. 24)

Use the voice command

Entering information in the navigation system using the voice command is simple because the screen lists the frequently occurring commands to use in the current situation.

Starting

A voice command is started as follows:

1. Press the steering wheel button for Voice control - the screen then lists examples of possible commands.

Commands in different ways

The command "Navigation > Set address" can, for example, be spoken as:

- Say "Navigation", then wait for the response from the system in the form of suitable alternatives on the screen - continue selecting and say e.g. "Set address".

or

- Say the whole command in one sequence: - "Navigation Set address".

Some simple tips

- To give a command: - Give a short press on the steering wheel's voice button and then speak naturally after the tone.
- To answer: - Speak after the tone that finishes the question.
- The voice recognition system asks several times for an answer. If the driver does

not answer then the session is concluded.

- The dialogue with the system can be speeded up: - Interrupt the system's speech with a short press on the steering wheel's voice button, wait for a tone and then start to speak.
- The driver can obtain help during a dialogue by saying "Help" after the tone.

NOTE

A complete list of quick commands is available in the menu system **MY CAR** - **MY CAR** → **Settings** → **Voice control settings** → **Command list**.

Volume

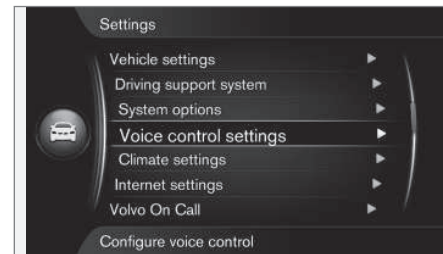
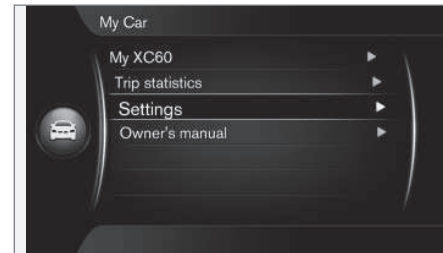
Adjust the audio volume of the voice recognition system with the centre console's **VOL** knob while the system is speaking.

Related information

- Help functions and settings for voice recognition (p. 22)
- Language options for voice recognition (p. 24)

Help functions and settings for voice recognition

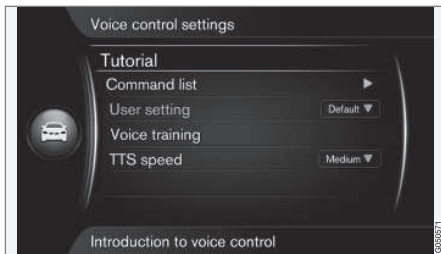
Practice using the voice recognition function with exercise programs. Set the voice profile for a specific driver by creating a user profile.



MY CAR → **Settings** → **Voice control settings**



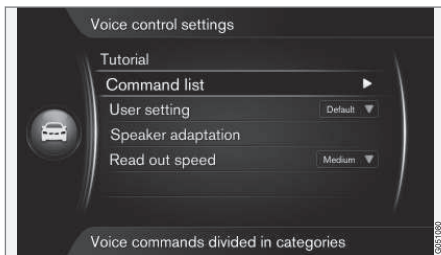
Introduction to voice control



MY CAR → Settings → Voice control settings → Introduction to voice control

Cursor on **Introduction to voice control** + **OK** gives information about how the voice recognition system operates and is an easy way of learning about its functions and the procedure for giving commands.

List of commands



MY CAR → Settings → Voice control settings → Command list

Cursor on **Command list** + **OK** shows all voice commands that the system can handle.

User profile

The better the driver knows the voice recognition system, the more comfortable the driver will be using the functions. For this reason it is recommended that you acquaint yourself with the system's practice programs.

i NOTE

The exercise program is only accessible when the car is stationary with the parking brake applied.



MY CAR → Settings → Voice control settings → User setting

Cursor on **User setting** + **OK** starts a program where the voice recognition system learns the driver's voice and language profile.

Here, the driver's role is to repeat the words and sentences read out by the program's voice after each audio signal, as well as to follow the onscreen instructions. The time required for profiling is approx. 5 minutes.

After profiling is complete a setting can be made with the desired option highlighted + **OK**:

- **Default:** - Standard setting if no voice and language profiling is completed.
- **Trained user:** - The voice recognition system is adapted for a specific driver in a specific language.

i NOTE

Menu option **Default** can only be changed to **Trained user** after a lesson on **User setting** has been completed.

See also the information under the heading "Change language" in section Language options for voice recognition (p. 24).



04 Voice recognition



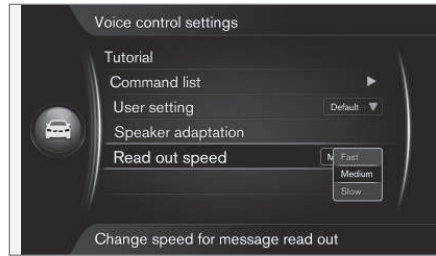
Voice training



MY CAR → Settings → Voice control settings → Speaker adaptation

Cursor on **Speaker adaptation** + **OK** starts a program where the voice recognition system learns to recognise the driver's voice and language profile even better than when it was stored during the voice and language profiling - see the description in the previous section "User profile".

Speed for synthetic voice



MY CAR → Settings → Voice control settings → Read out speed

Cursor on **Read out speed** + **OK** enables the option to change the speed at which the voice recognition system speaks:

- **Fast**
- **Medium**
- **Slow**

Related information

- General about Voice control (p. 21)
- Language options for voice recognition (p. 24)
- Use the voice command (p. 22)

Language options for voice recognition

Voice recognition system (p. 21) is under continuous development, and at the time of issue of this owner's manual the function was available for this main map in the following languages:


- English (UK)
- French (FRA)
- Dutch
- Italian
- Russian
- Spanish (EU)
- Swedish
- German

NOTE

The voice recognition system in combination with GPS navigation only works with the languages listed here.

Change language

MY CAR → Settings → Language

 The languages that are included in the voice recognition system have this icon in the language list.

To change the language - navigate to **MY CAR → Settings → Language** and highlight the required language + **OK** + **NAV**.



Language dependent user profile

The voice recognition system only understands the language set in **MY CAR**.

Say that the voice and language profile **Trained user** is stored by a **Swedish speaking** driver with the system set in **Swedish**. If the driver then changes the car's language (in **MY CAR**) to **English**, the voice recognition function will not work.

This is because the voice and language profile "**Trained user**" - which only understands commands in **Swedish** - is no longer selectable since the voice recognition system now only understands and expects **English** speech. Instead, the system activates the option **Default**.

For the voice recognition system to understand the driver's **English** pronunciation the only solution is to repeat the procedure described under the heading "User profile"¹ - but then with the system set to **English**.

NOTE

If a market is not included in the language list then there is always the option to select a language from the list and use voice recognition in that language for navigation.

However, note that if the language is changed to English, for example, in **MY CAR**, then not only is Voice recognition changed to English - but Voice guidance and Menu and Help texts also change to the same language.

Related information

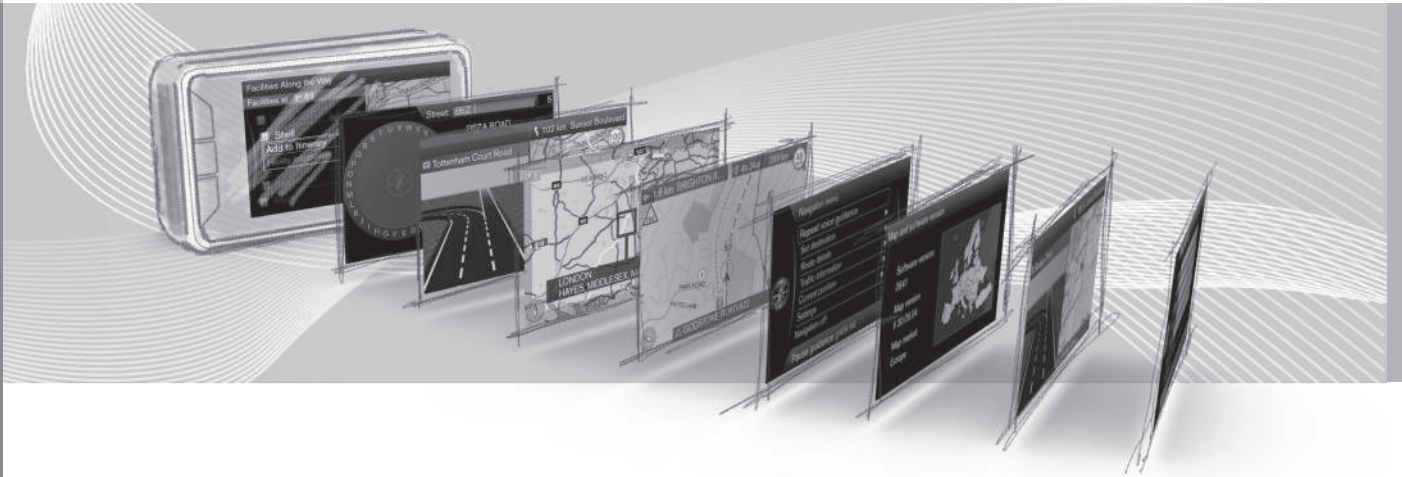
- General about Voice control (p. 21)
- Use the voice command (p. 22)

¹ See (p. 22).

05



DAISY WHEEL





Entering and selecting options

Use the navigation system's daisy wheel or the centre console keypad for entering and selecting options. For example, enter information about an address or a facility.



Screen view with text field or optional text.

This navigation system uses a "daisy wheel" to enter specific information, e.g. type of POI, city/town, area/country or address.

Activate an option

After marking a desired function/menu bar using the **thumb wheel** or the **TUNE** knob, press the **thumb wheel/OK** to see the next level of functions/options.

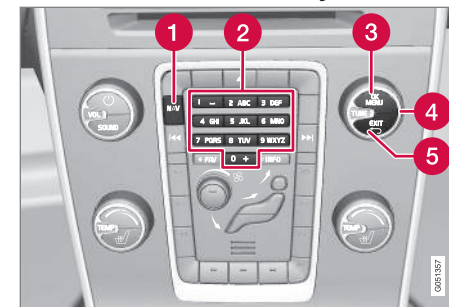
Enter with the daisy wheel



The daisy wheel.

1. Mark a text field.
2. Press **OK** to call up the daisy wheel.
3. Select the characters using the **thumb wheel/TUNE** knob and enter them by pressing **thumb wheel/OK**.

Enter with the numerical keys



[2]. Numerical keyboard¹.

Another way of entering characters is using the centre console's buttons **0-9**, ***** and **#**.

9 WXYZ When **9** is pressed, a bar appears with all characters² under the buttons, e.g. w, x, y, z and 9. Quick press the move/"loop" cursor through these characters.

- Stop using the cursor on the desired character to select it - the character is shown on the enter line.
- Delete/change using **EXIT**.

¹ NOTE: The figure is schematic - details may vary depending on car model and market.

² The character for each button may vary depending on market.



More options

NOTE

Faded characters cannot be selected in combination with the currently input characters.

In the daisy wheel's inset menu there are further options that have more characters and digits:

- **123/ABC + OK** - the daisy wheel switches between numbers and characters.
- **MORE + OK** - alternative characters are shown in the wheel.
- **=> + OK** - the cursor moves to the list on the right-hand side of the screen, where selections can be made using **OK**.
- **Postcode + OK** - the cursor moves to the list on the right-hand side of the screen, where **OK** can be used to select options, see (p. 47).

List of options



List that matches entered characters.

A search will list the possible options based on input information.

The digit "149" in the screen's top right-hand corner means that the list contains 149 possible options that match the entered letters "LON".

No list

An empty list and the characters "****" in the screen's top right-hand corner mean that the number of available options with current entered characters is greater than 1000 - when the amount is less, the current options are shown automatically.

To reduce the number of options in the list:

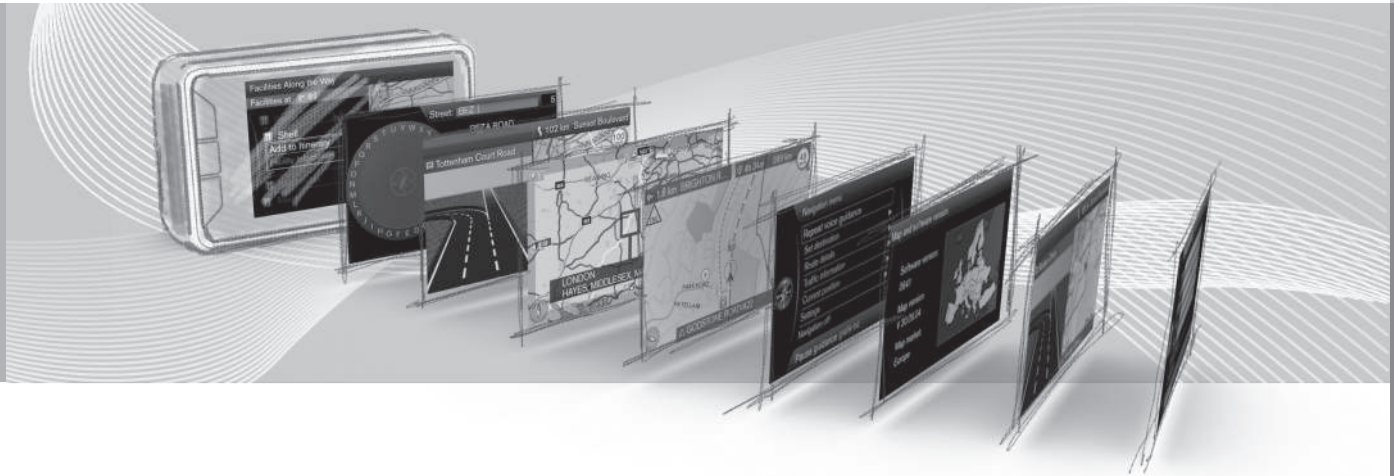
- Enter more characters on the text line.

Related information

- Controls - general (p. 18)

06

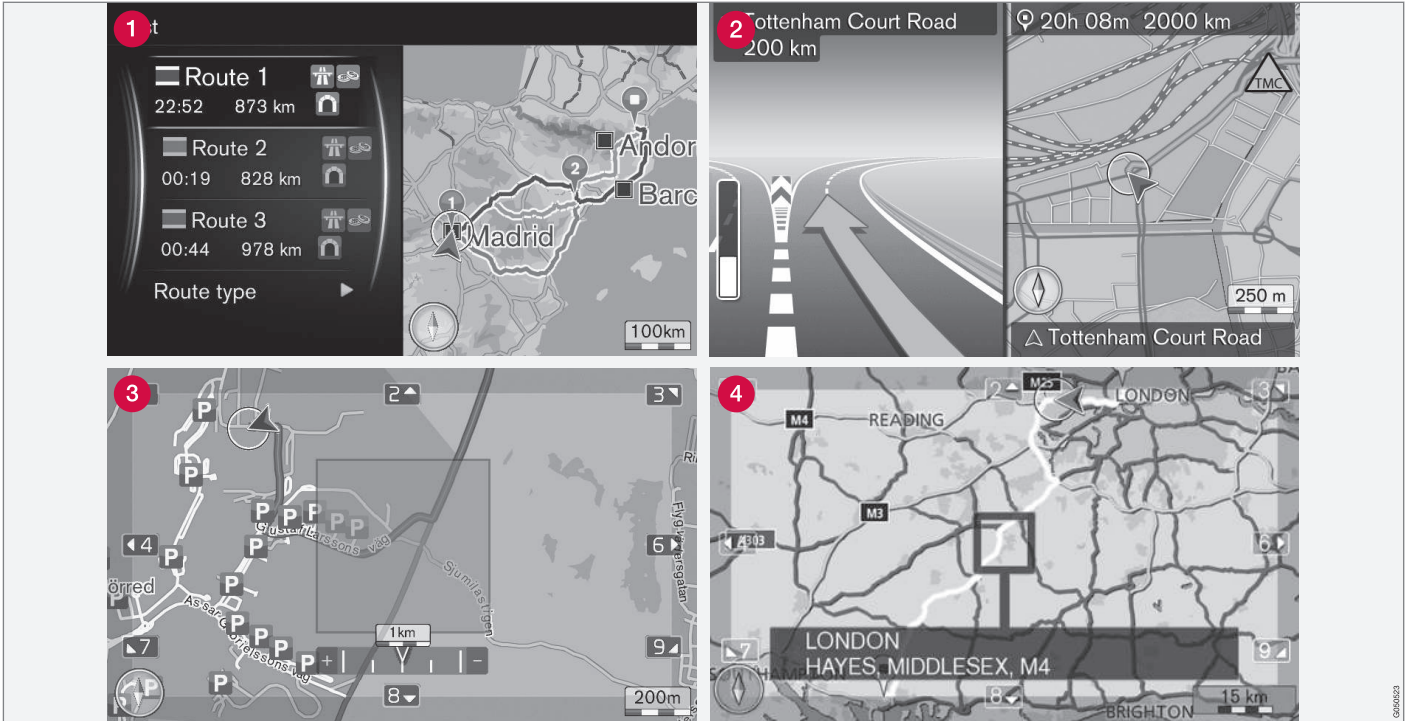
MAPS, COMPASS AND VOICE GUIDANCE





06 Maps, compass and voice guidance

Map image - some examples



NOTE: The figures are schematic - details may vary depending on software version and market.

Shown here are examples of map images for the current position. Itinerary, junction map

and scroll mode are some of the views that the screen can show.

The appearance of the screen depends on geographic position and the settings made,

06/04/2011



e.g. map scale, POI options selected for display, etc.

Explanations for the text, signs and symbols that may appear on the display are available on the front of the cover.

- 1 Three alternative route outlines can be calculated when an Itinerary is set, see (p. 59).
- 2 Detailed junction map - the left-hand section of the screen shows a detailed enlargement of the next junction. The situation is always supplemented with a voice message, see (p. 32).
- 3 Avoid a particular area, see (p. 61).
- 4 Scroll mode, see (p. 36).

Related information

- Compass (p. 32)
- Voice guidance (p. 32)



Compass

There is a compass on the screen's map image that shows the direction in which the front of the car is pointing.



The red tip of the compass needle points north and the white end points south. A text-based compass direction can also be selected as an alternative to the graphic compass, see (p. 63).

Voice guidance

After a destination (p. 41) has been entered and the car approaches a junction or exit, a voice message states distance and type of next manoeuvre. Shown at the same time is a detailed map of the junction (p. 30). The voice guidance message is repeated closer to the junction.

The volume can be adjusted with the audio unit's volume button (during ongoing voice message).

To repeat a message:

- Press twice on the **OK** button.

For more information, see the heading "Voice guidance" (p. 66).



NOTE

There is no voice guidance during a current call with a Bluetooth-connected mobile phone.

To use Voice guidance in a different language:

- See **Voice control** (p. 24).

Related information

- Guiding options (p. 66)

07

MENUS





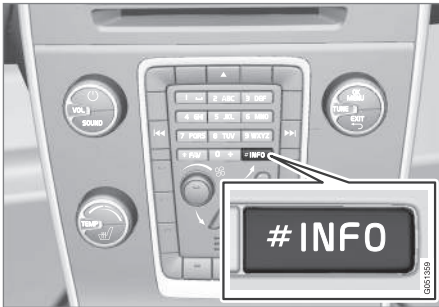
General information about menus

The navigation system's menus consist of Shortcuts, Main menu and Scroll menu. Related options are presented under each menu.

NOTE

Greyed-out menu bars/options on the screen are temporarily not selectable.

Additional information



NOTE: The figure is schematic - details may vary depending on car model and market.

Sometimes there is more information available than can fit on a menu bar - the text line then ends with the character: "#".

To view the rest of the information:

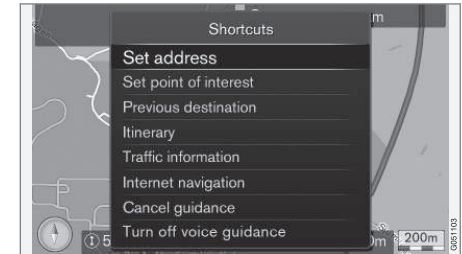
- Press the **INFO** button.

Related information

- Shortcuts (p. 34)
- Main menu (p. 35)
- Scroll menu (p. 36)
- Menu tree (p. 37)

Shortcuts

The navigation system has a menu with shortcuts to the most frequently used functions.



To Shortcuts from map mode

- Press the **NAV** button.

To Shortcuts from another menu

- Press the **NAV** button twice.

The shortcuts are:

- **Set address** - see (p. 42).
- **Set point of interest** - see (p. 44).
- **Previous destinations** - see (p. 46).
- **Itinerary** - see (p. 51).
- **Traffic information** - see (p. 74).
- **Internet search** - see (p. 46).
- **Cancel guidance** - cancels/pauses the current itinerary. The menu bar then



changes over to the option **Resume guidance**.

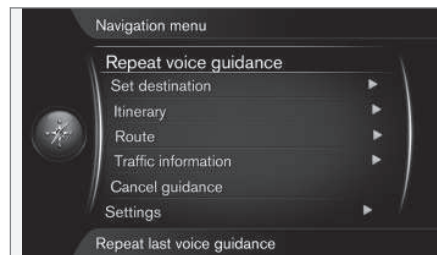
- **Turn off voice guidance/Turn on voice guidance** - deactivates/reactivates voice guidance. When the function is deactivated, voice guidance is given for each press on the main menu's top option **Repeat voice guidance**, see (p. 35).

Related information

- General information about menus (p. 34)
- Main menu (p. 35)
- Scroll menu (p. 36)

Main menu

The main menu is located at the top of the navigation system's menu tree.



To Main menu from map mode

- Press the **OK** button.

To Main menu from another menu

- Press **NAV** and then **OK**.

Repeat voice guidance

- Cursor on **Repeat voice guidance** - the last instruction read out is repeated with each press on the **OK** button, see (p. 32).

Or with the map on the screen:

- Press twice on the **OK** button.

The voice guidance function can be deactivated, see (p. 34).

Back to the map

There is an easy way to quickly bring up the map on the screen again, no matter how deep into the menu system (p. 34) the user is:

- Press **NAV**.

Related information

- Shortcuts (p. 34)



Scroll menu

In Scroll mode a crosshair is moved over the map image with the numerical keys in the centre console (p. 18).

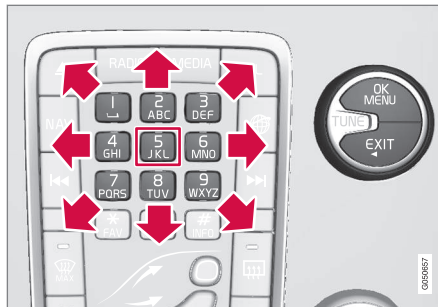


Scroll mode with crosshair¹

Activating Scroll mode in normal map mode

- Press one of the numerical keys **0-9**.

Scrolling



- Press one of the numerical digit keys **1-2-3-4-6-7-8-9** - a directional arrow is shown in the margins combined with the number that will be used to scroll the map in the desired direction.

To zoom

- Turn the **TUNE** knob.

Numerical button "5"

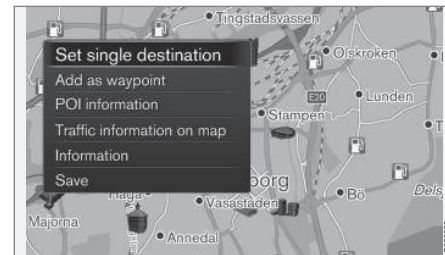
5 JKL Pressing the number **5** in Scroll mode centres the map around the car's position.

If an Itinerary with Intermediate destinations is activated, the map is centred around each respective Intermediate destination with each additional press.

Exiting from Scroll mode

- Press **EXIT** or **NAV**.

Crosshair



Press **OK** once to show a menu for the point on the map, which the centre of the crosshair points to:

- **Set single destination** - Deletes any previous destinations in the itinerary, and starts guidance on the map.
- **Add as waypoint** - Adds the selected point to the itinerary.
- **POI information** - shows name and address on the screen for the POI located closest to the crosshair. For more information on POI options, see (p. 44).
- **Traffic information on map** - Allows you to view traffic messages² around the selected location.

¹ Select whether the position of the crosshair/cursor should be shown with name or GPS coordinates, (p. 63).

² The service is not available for all areas/markets.



- **Information** - Shows information available about the selected location.
- **Save** - Allows you to store the highlighted location in the memory.

Related information

- General information about menus (p. 34)
- Shortcuts (p. 34)
- Main menu (p. 35)

Menu tree

The menus are structured as follows:

Menu level 1	
Menu level 2	—
Menu level 3	

Menus/functions and page

Three of the menu tree's levels are shown. Menus at level 3 can have further submenus - these are described in more detail in each respective section where appropriate.

Repeat voice guidance	(p. 32)
Set destination	(p. 41)
Home	(p. 41)

Address	(p. 42)
Country:	
City:	
Street:	
Number:	
Junction:	
Set single destination	
Add as waypoint	
Information	
Save	
Point of interest (POI)	(p. 44)
By name	
By category	
Near the car	
Along the route	
Near the destination	
Around point on map	
Stored location	(p. 45)
Set single destination	
Edit	
Delete	
Delete all	



Previous destination	(p. 46)
Set single destination	
Add as waypoint	
Information	
Save	
Delete	
Delete all	
Internet search	(p. 46)
Postcode	(p. 47)
Country:	
Postcode	
Street:	
Number:	
Junction:	
Set single destination	
Add as waypoint	
Information	
Save	

Latitude and longitude	(p. 47)
Format:	
Set single destination	
Add as waypoint	
Information	
Save	
Select point on map	(p. 48)
Set single destination	
Add as waypoint	
Save	
Travel guide	(p. 49)
Start guidance	
Details	
Photos	
Play audio	
Pause audio	
Itinerary	
Itinerary	(p. 51)
Start guidance	
Add another waypoint	
Clear itinerary	

Route	
Avoid	(p. 54)
Reroute	
Longer	
Shorter	
Delete	
Alternative routes to destination	(p. 54)
Route overview	(p. 54)
Detailed route information	(p. 55)
Next	
Previous	
Zoom in	
Zoom out	
Map of remaining route	(p. 56)
Record route	(p. 57)
or	
Stop recording	
Traffic information	(p. 73)



Cancel guidance	(p. 35)
or	
Resume guidance	
Settings	
Route options	(p. 59)
Route type	(p. 62)
Reroute on request	(p. 61)
Route proposals	(p. 62)
Use carpool lane	
Use express lane	
Avoid area	
Avoid motorways	
Avoid toll roads	
Avoid tunnels	
Avoid ferries	
Avoid car trains	
Avoid vignette obligation	

Map options	(p. 63)
Show full-screen map	
Map type	
Motorway information	
Position information	
Compass	
POI symbols	
Map colours	
Stored location on map	

Guidance options	(p. 66)
Time of arrival format	
Street names in voice guidance	
Turn-by-turn navigation	
Automatic read out of traffic	
Audio fadeout	
Voice guidance	
Use simple voice guidance	
Speed camera warning	
Stored location notification	
Travel POI notification	
Guided tour notification	
System information	(p. 69)
FAV key options	(p. 70)
Import/export stored locations	(p. 71)

Related information

- General information about menus (p. 34)

08



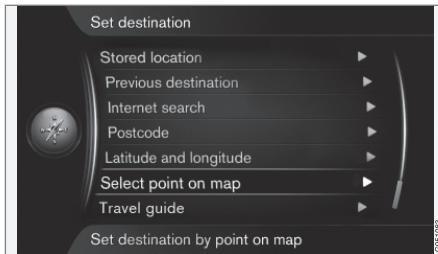
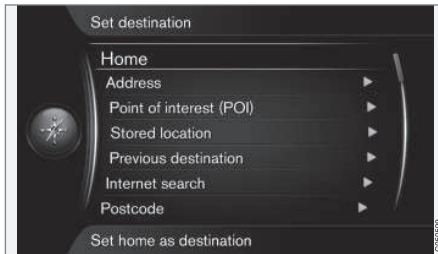
SPECIFY A DESTINATION





General information about entering a destination

Destinations can be entered in different ways.



The following methods are available for entering a destination:

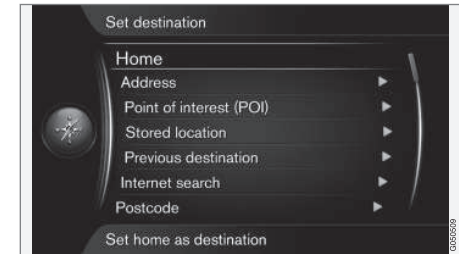
- **Home**, (p. 41).
- **Address**, (p. 42).
- **Point of interest (POI)**, (p. 44).
- **Stored location**, (p. 45).
- **Previous destination**, (p. 46).

- **Internet search**, (p. 46).
- **Postcode**, (p. 47).
- **Latitude and longitude**, (p. 47).
- **Select point on map**, (p. 48).
- **Travel guide**, (p. 49).

See also daisy wheel (p. 27) for information on how characters are typed/entered into the system's various text fields.

Search via Home

Enter destination via search for "Home" in order to create the return journey home or to work.



Set destination → Home

The navigation system can store (p. 45) any position under the menu option "Home" - the function simplifies the return journey home or to work after a trip or an assignment.





08 Specify a destination



The option to store a position such as "Home" is shown each time a position is due to be saved:

- Highlight **Save location as home** + **OK**.

To activate an Itinerary with destination "Home":

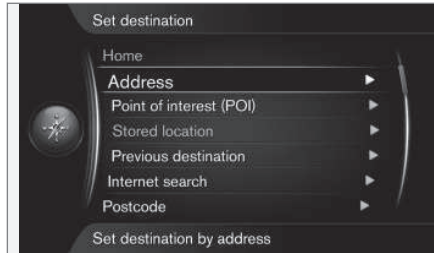
- Highlight **Set destination** → **Home** + **OK** - guidance starts.

Related information

- General information about entering a destination (p. 41)

Search via Address

Enter destination via search on an address.



Set destination → Address

It is sufficient to only enter a city/town in order to obtain an itinerary with guidance - it guides to the centre of the city/town.

NOTE

The definition of city or area may vary from country to country and even within the same country. In some cases, it refers to a municipality and in others it refers to a district.

Country, city/town and street



How to search and locate a destination with address¹:

1. With the previous image view on the screen, press **OK** to activate the preset text field - the daisy wheel (p. 27) is shown.
2. Enter the name of the city/town in **City**: with the daisy wheel, or the centre console's numerical keypad, see (p. 18).
3. Then select **Street**: with **TUNE + OK** and repeat the procedure.

The following search criteria can be used:

- **Country**: - Enter a country.
- **City**: - Enter a district/city.
- **Street**: - Enter the street address.
- **Number**: - Select one of the street's house numbers.

¹ For information about how characters are typed/entered into the text fields, see Entering and selecting options (p. 27).



- **Junction:** - Select destination based on two intersecting streets/roads.
- **Set single destination** - Deletes any previous destination in the itinerary and starts guidance to the current destination.
- **Add as waypoint** - Select + **OK** to add the address to the itinerary.
- **Information** - Select + **OK** to view information about the selected destination.
- **Save** - (p. 45) in the memory as **Stored location** or as **Home**.

More about Information



Select an address/street + **OK** - then the following can be selected:

- **Map** - Shows where on the map the location can be found - sometimes with additional information.
- **Call number**² - Calls the facility if a telephone number is given.

² Requires connected mobile phone, see the Sensus Infotainment supplement.

³ Requires connection to the Internet, see the Sensus Infotainment supplement.

- **Online info.**³ - Supplementary information is downloaded from the Internet.

Set single destination



One destination and any intermediate destinations are stored in an itinerary.

- **Set single destination** - an itinerary is created. Any previous itinerary is deleted.
- **Add as waypoint** - the destination is added as an intermediate destination in the itinerary.
- **Start guidance** - activates guidance in accordance with the current itinerary.

See more information on **Start guidance** in Itinerary - general (p. 51)

Related information

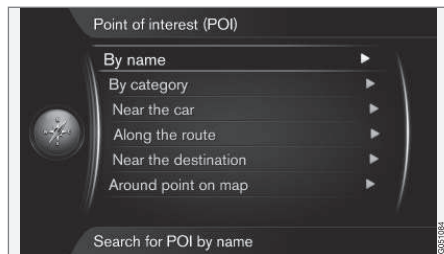
- General information about entering a destination (p. 41)



08 Specify a destination

Search via POI

Enter destination via search of POI options.



POI⁴ also denominated as "point of interest" and "facility".

The map database contains a large number of searchable POI⁵ options which can be specified as destinations.

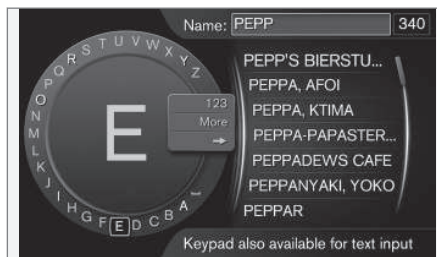
All searches of POI options take place using the daisy wheel (p. 27) and subsequent options in the results lists. Highlight the required option in the results list + **OK** and finish by selecting one of the following:

- **Set single destination** - Deletes any previous destination in the itinerary and starts guidance to the current destination.
- **Add as waypoint** - Select + **OK** to add the address to the itinerary.

- **Information** - Select + **OK** to view information about the selected destination.
- **Save** - stores the address in the memory as **Stored location** or as **Home**.

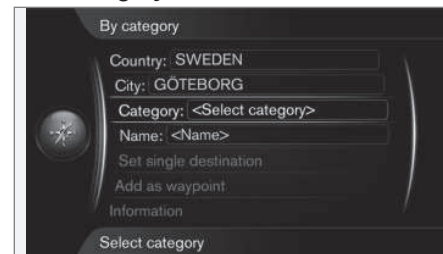
The procedure is the same as described under the heading "Country, city/town and street" in Search via Address (p. 42).

With name



The menu option **By name** + **OK** leads directly to the daisy wheel and refers to searching of POI options with their proper name, e.g. "Peppes Bodega". The search area is the whole of the current map area, e.g. EUROPE, see (p. 85).

With category



The menu option **By category** enables limited searching of POI options - select to enter their category (e.g. bank/hotel/museum), proper name, country and/or city/town.

Around the car

The menu option **Near the car** refers to searching of POI options around the car's current position.

Along the route

The menu option **Along the route** refers to searching of POI options along the set itinerary.

Near the destination

The menu option **Near the destination** refers to searching of POI options in the vicinity of the destination.

⁴ Point of interest.

⁵ To select which POI options should be permanently visible on the map, see the heading "POI on map" (p. 63).



Around point on map

The menu option **Around point on map** refers to searching of POI options with the Scroll function's crosshair - see (p. 36).

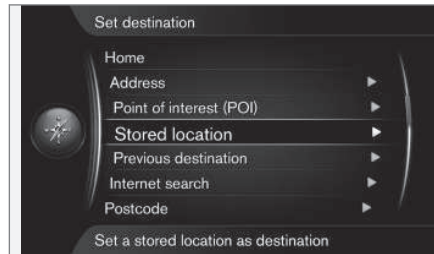
- The scroll map is shown - Position the crosshair on the desired location + **OK** and search for the desired POI.

Related information

- General information about entering a destination (p. 41)
- Points of Interest - POI (p. 79)

Search via Stored location

Enter destination via search of previously stored location.



Set destination → Stored location

Collected here are routes, destinations and locations that have been stored with the menu option **"Save"**. An itinerary (p. 51) can then be quickly set/supplemented by making use of these items.



Stored under "Routes" ("Routes") are e.g. recorded road sections⁶.



Stored under "Other" ("Other") are e.g. saved locations.

Individual routes, destinations and locations saved under **Routes** and **Other** can be adjusted:

- **Set single destination**
- **Add as waypoint**
- **Information**

⁶ See (p. 57).



08 Specify a destination



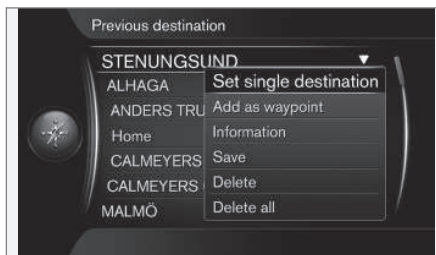
- **Edit**
- **Delete**
- **Delete all**

Related information

- General information about entering a destination (p. 41)

Search via Previous destinations

Choose between previously stored destinations.



Set destination → Previous destination

Previously used destinations are stored here. Highlight one of them + **OK** and then select between:

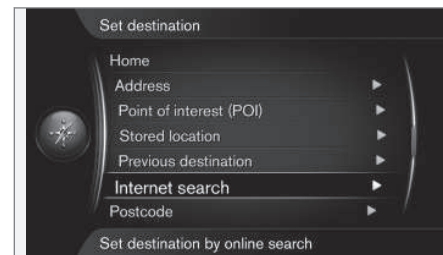
- **Set single destination**
- **Add as waypoint**
- **Information**
- **Save**
- **Delete**
- **Delete all.**

Related information

- General information about entering a destination (p. 41)

Search via Internet

Choose to search for destination via the Internet.



Set destination → Internet search

The option enables searching for destinations via the Internet⁷. Follow the on-screen instructions.

Related information

- General information about entering a destination (p. 41)

⁷ Requires connection to the Internet, see the Sensus Infotainment supplement.



Search via Postcode

Enter destination via search of postcodes.



Set destination → Postcode

Search destination by postcode:

1. Highlight **Postcode** **OK** + to call up the daisy wheel.



2. Select characters with the **TUNE** knob and type/enter them by pressing **OK** - or type/enter characters using the centre console's numerical keys (p. 27).

- **ABC/123** + **OK** - the daisy wheel switches between characters and numbers.
- **MORE** + **OK** - alternative characters are shown in the wheel.
- **=>** + **OK** - the cursor moves to the list on the right-hand side of the screen, where selections can be made using **OK**.
- **City:** + **OK** - cursor changes menu and enables selection of another search area for postcodes.

i NOTE

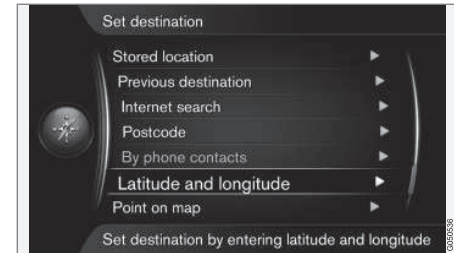
Presentation of post code may differ between different markets/areas.

Related information

- General information about entering a destination (p. 41)

Search via Latitude/Longitude

Enter destination with GPS coordinates.



Set destination → Latitude and longitude

First decide which method to use to enter the GPS coordinates by highlighting **Format:** + **OK**. Then highlight one of the following options + **OK**:

- **DD°MM'SS''** - position with Degrees, Minutes and Seconds.
- **Decimal** - position with Decimals.



08 Specify a destination



Then enter the GPS coordinates as follows:

1. Position the cursor on the digit/character to be changed by turning **TUNE** and press **OK** - the character window changes contrast and becomes "active".
2. Turn **TUNE** to type/enter the digit/character and finish with **OK** - the character window becomes "deactivated".
3. Move the cursor to the next character location to be changed and repeat steps 1 + 2.
4. When both coordinates have been entered, turn **TUNE** and highlight one of the following options + **OK** in order to store the position or add it to the itinerary:

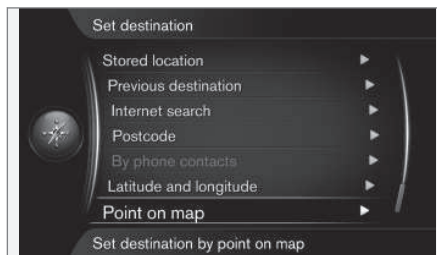
- **Set single destination** - adds the position of the coordinates on the map as a destination.
- **Add as waypoint** - adds the position of the coordinates on the map as an intermediate destination in the itinerary.
- **Information** - shows information available about the position.
- **Save** - stores the position in the memory as **Stored location** or as **Home**.

Related information

- General information about entering a destination (p. 41)

Search via Point on the map

Enter destination by means of searching via point on map.



Cursor position shown with GPS coordinates⁸.

Set destination → Select point on map

Shows maps with current location pointed out by a cursor.

- Turn **TUNE** to change the scale.

1. Move the crosshair using the centre console's numerical keys: [**6 MNO**] moves to the right, [**8 TUV**] moves down, etc., see (p. 36).
2. When the desired location has been found - Press **OK**.



Cursor position shown with name⁸.

Then select between the following options and activate with **OK**:

- **Set single destination**
- **Add as waypoint**
- **Save**

Using the **Save** option the destination is stored as a symbol/icon on the map if the **Stored location on map** function is selected. See more under the heading in section "**Map options**" Map options (p. 63).

Related information

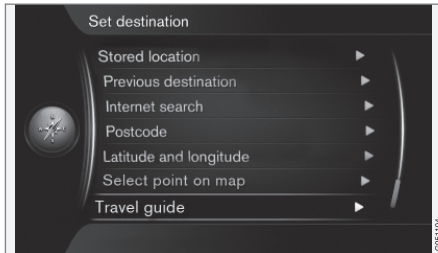
- General information about entering a destination (p. 41)

⁸ Select whether the cursor's position shall be shown with name or GPS coordinates, see the heading "Information about current position" in section "Map options" (p. 63).



Search via Travel guide

Search via "Travel guide"⁹ means that prepared suggestions are available to choose from with varying themes, e.g. restaurants, scenic roads or sights and landmarks.



Set destination → Travel guide

A Travel guide is stored on a USB memory stick that must be inserted in the car's USB connector¹⁰.

If the menu option is not visible on the screen then there are no suggestions in the area the car is currently in, or a USB device is not connected.

- **Start guidance** (Start guidance)
- **Details** (Details)
- **Photos** (Photos)
- **Play audio** (Play audio)

- **Pause audio** (Pause audio)

Related information

- General information about entering a destination (p. 41)

⁹ Not available for all areas or markets.

¹⁰ For information about connecting a USB memory stick, see the owner's manual for the car or the Sensus Infotainment supplement.

09



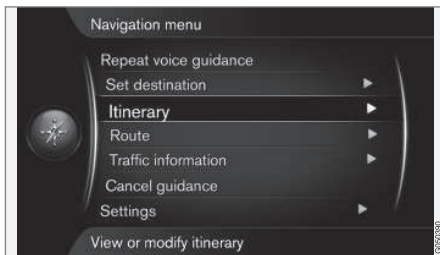
ITINERARY





Itinerary - general

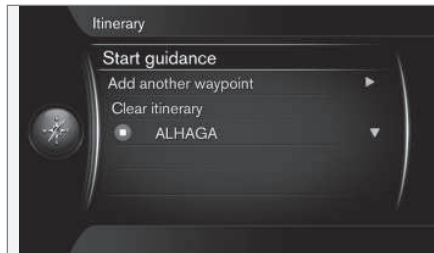
Arrange an itinerary and start guidance to navigate to a desired destination.



Itinerary

An Itinerary is created when a destination is saved. The system handles one itinerary at a time with a maximum of 4 intermediate destinations.

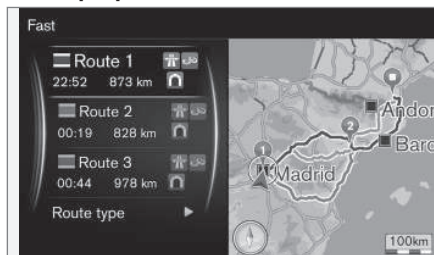
Start guidance



Itinerary → Start guidance

Cursor on **Start guidance** + **OK** activates current itinerary and guidance is started.

Route proposals



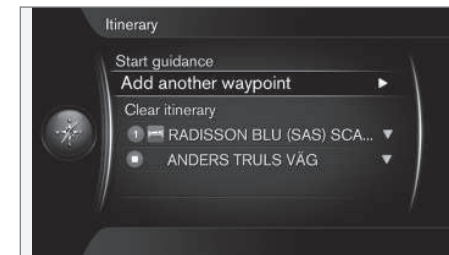
3 alternative itineraries.

If the **Route proposals**¹ function is preset with the value "3" - which means that 3 alternative itineraries are shown - the driver must

first select one of them before guidance starts, see (p. 54).

Add destination

If you want to make a journey in stages then up to 4 "intermediate stops"/intermediate destinations can be added to the itinerary.



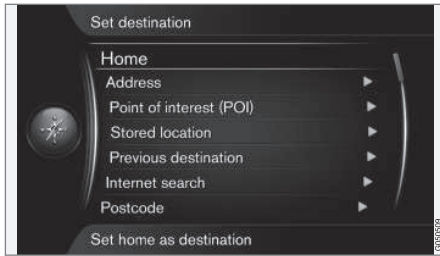
Itinerary → Add another waypoint

Cursor on **Add another waypoint** + **OK** leads to the main menu in order to enter destination (p. 41).

¹ See (p. 59).



09 Itinerary



Select method to determine/search for an intermediate destination from the menu **Set destination** and add up to 4 intermediate destinations.

The first specified/saved destination is the journey's Final destination - subsequent input destinations are then Intermediate destinations.

NOTE

The last added destination will always be Waypoint-1 - the previous Waypoint is raised one step: "Old" Waypoint 1 becomes Waypoint 2, etc.

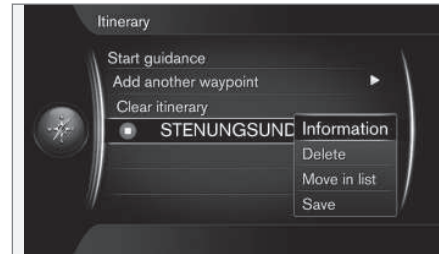
The reciprocal order of the intermediate destinations can easily be adjusted afterwards - see point **Move in list** (p. 52).

Related information

- Intermediate destinations in the itinerary (p. 52)

Intermediate destinations in the itinerary

Intermediate destinations/intermediate stops in an itinerary can be adjusted and/or replaced.



Highlight an intermediate destination + **OK** to perform the following with each respective intermediate destination:

- **Information** - e.g. name and address.
- **Delete** - deletes the intermediate destination.
- **Move in list** - changes order in the itinerary (see next heading).
- **Save** - saves the intermediate destination.

Move in list

To change the order between the intermediate destinations - proceed as follows:

1. Highlight the intermediate destination to be moved + **OK** - a pop-up menu is shown
2. Highlight **Move in list** + **OK**
3. Turn **TUNE** - the intermediate destination is moved up/down in the list
4. Finish with **OK** to confirm the move.

Delete itinerary

Cursor on **Clear itinerary** + **OK** deletes the current itinerary including all intermediate destinations.

Related information

- Itinerary - general (p. 51)
- Map of the remaining route (p. 56)

10

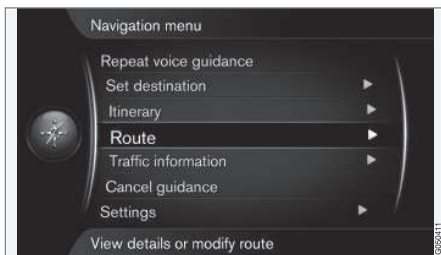
ROUTE



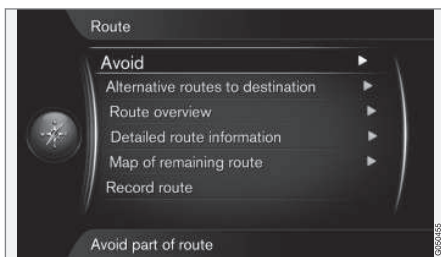


Route - avoid

With this function the driver can select to avoid the next approaching section of a route.



The function **Avoid** only works where alternative streets/roads are available - otherwise the highlighting, or parts of it, is ignored.



Route → **Avoid**

Cursor on **Avoid** + **OK** opens the following view, with the first possible subsection already highlighted.



Highlighted subsection.

Highlight the desired action + **OK**:

- **Reroute** - the system calculates another route in which consideration has been taken of the section to be avoided.
- **Longer** - subsection to avoid is extended.
- **Shorter** - subsection to avoid is shortened.
- **Delete** - highlighted subsections are deleted and the route is restored to the original version.

Using a similar function - **Avoid area** - a whole area can be deselected, see (p. 61).

Related information

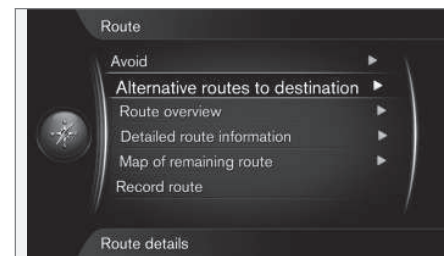
- Alternative routes and route overview (p. 54)
- Detailed route information (p. 55)
- Map of the remaining route (p. 56)
- Record a route (p. 57)
- Route options - avoid area (p. 61)

Alternative routes and route overview

Described here is how an alternative route to the destination can be selected - from a list of prepared alternative routes.

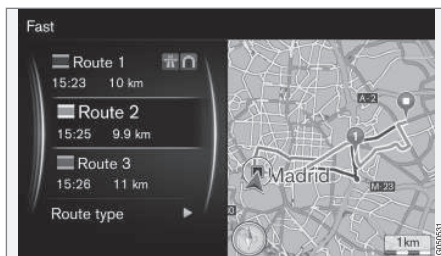
The subsequent "Route overview" function shows the name of a highlighted intermediate destination and the distance to reach it.

Alternative routes



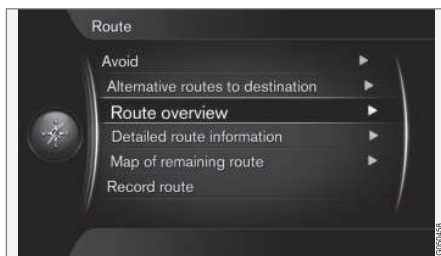
Route → **Alternative routes to destination**

Cursor on **Alternative routes to destination** + **OK** enables the option to select from previously compiled alternative routes to the destination. Also see **Route proposals** (p. 59).



Use **Route type** to select the type of route outline required, see (p. 59).

Route overview



Route → Route overview

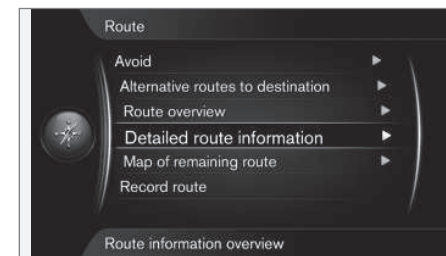
Cursor on **Route overview** + **OK** lists information about the route's intermediate destinations and final destination.

Related information

- Route - avoid (p. 54)

Detailed route information

Shown here are the elements contained in each section between two intermediate destinations, e.g. exits and junctions.



Route → Detailed route information

Each respective subsection between a route's intermediate destinations consists of a number of subsections containing different elements, e.g. straight sections, exits, intersections, slip roads, etc.



Detailed subsection on a route.

Cursor on **Next** or **Previous** + **OK** shows position on map, denomination and distance for all subsections of the route.

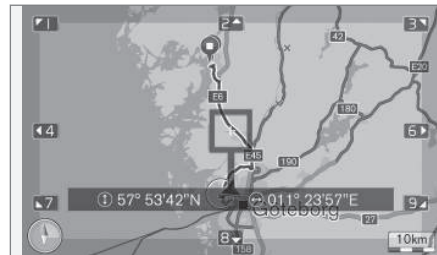
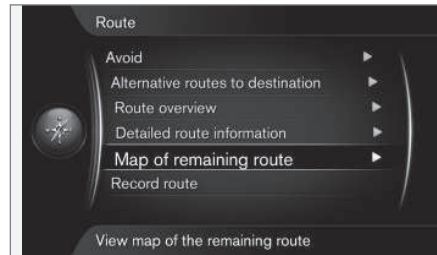
- **Next** - scrolls to next subsection.
- **Previous** - scrolls to previous subsection.
- **Zoom in**/**Zoom out** - enlarges/reduces the map image of the current subsection.

Related information

- Route - avoid (p. 54)

Map of the remaining route

This function shows the remaining distance for the route.



Route → Map of remaining route

Cursor on **Map of remaining route** + **OK** shows a screenshot of the remaining section of the route from the car's current position.

Otherwise, the same functions as in the Scroll menu (p. 36).

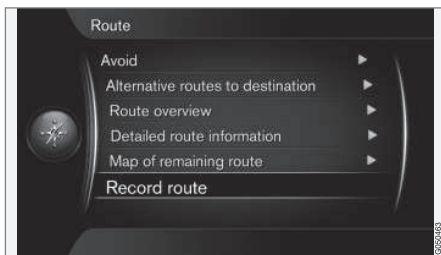
Related information

- Route - avoid (p. 54)



Record a route

Record and store the route in the navigation system's memory.

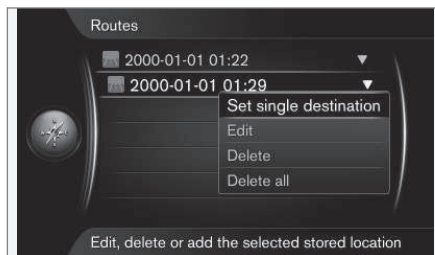


The "REC" symbol indicates that route recording is in progress.

Route → Record route

The REC symbol is shown on the screen while recording is in progress. Recording is

cancelled with the same menu option - **Start/Stop route recording.**



Recorded routes are stored and can be opened in the menu **Set destination** → **Stored location** → **Routes** (p. 45).

Recorded files can be exported/transferred to a USB memory stick¹ in order to e.g. be copied to another vehicle's GPS navigator. For more information, see (p. 71).

Related information

- Route - avoid (p. 54)

¹ For information about connecting a USB memory stick, see the owner's manual for the car or the Sensus Infotainment supplement.

11

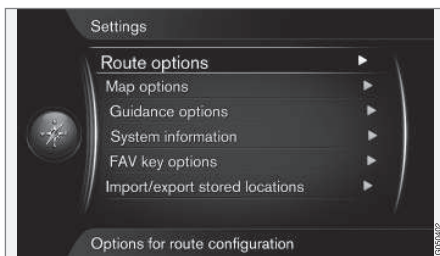
SETTINGS





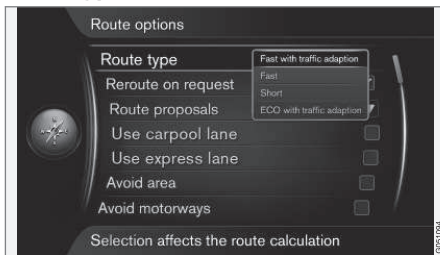
Route options

Settings for route options include route type and number of route proposals, amongst other things.



Settings → Route options

Route type

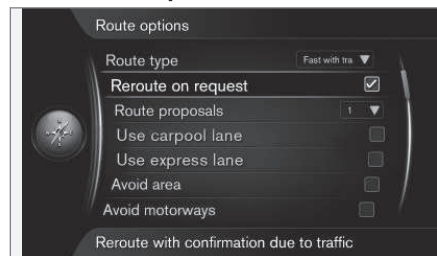


Settings → Route options → Route type

Different types of route can be selected here: Highlight and activate the desired option with **OK**.

- **Fast with traffic adaption** - short travel time with minimal traffic queues¹.
- **Fast** - short travel time prioritised.
- **Short** - short route prioritised. The route can also be set via smaller roads.
- **ECO with traffic adaption** - low fuel consumption¹ prioritised.

Reroute on request

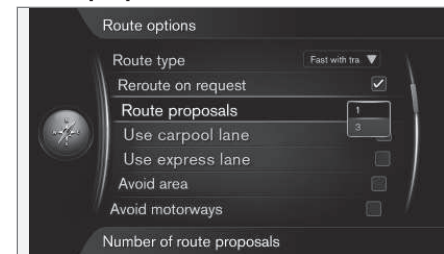


Settings → Route options → Reroute on request

This function requires that route recalculation due to traffic information must be confirmed by the driver with **OK** or ignored with **EXIT**.

- Selected box at **Reroute on request**: - The driver must confirm the recalculation.
- Empty box: - Route recalculation takes place automatically.

Route proposals



Settings → Route options → Route proposals

On the command **Start guidance** guidance starts in different ways depending on whether the driver has selected the option "1" or "3"².

- Activate the desired option with **OK** and leave the menu with **EXIT** or **NAV**.

Alternatives "1"

The route is based on preset **Route type** in the previous section and guidance starts.

¹ Coordinated with information from the Traffic radio (p. 73).
² See (p. 51).



11 Settings



Alternatives "3"

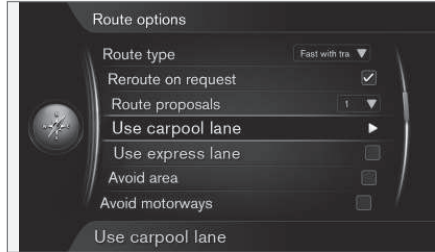


The driver must select between different alternative routes - only then does guidance start.

NOTE

The delay before guidance starts is slightly longer when the "3" option is selected - the system must first then calculate 3 suitable alternatives.

Use carpool file³

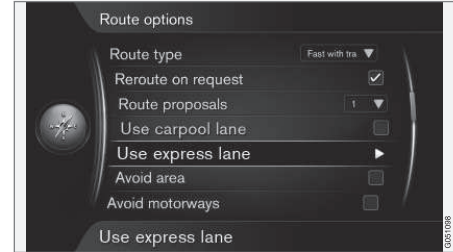


Settings → Route options → Use carpool lane

Sometimes private passenger cars are allowed to use lanes normally intended for local buses, commercial vehicles and taxis - this is provided that the passenger car is carrying one or more passengers. With this function activated, lanes of this type are also included in the calculation of a suitable route.

- **Use carpool lane** is activated with a tick in the box with **OK** - leave the menu with **EXIT** or **NAV**.

Use express file³



Settings → Route options → Use express lane

Sometimes private passenger cars are allowed to use lanes normally intended for local buses, commercial vehicles and taxis - this is provided that the passenger car is classed as a "green car" or similar. With this function activated, lanes of this type are also included in the calculation of a suitable route.

- **Use express lane** is activated with a tick in the box with **OK** - leave the menu with **EXIT** or **NAV**.

Related information

- Route options - avoid area (p. 61)
- Route options - adapt route (p. 62)
- Map options (p. 63)
- Guiding options (p. 66)

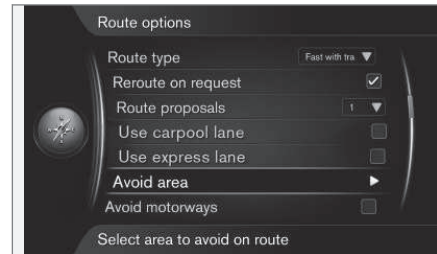
³ The function is only available if such information is included in the map data.



- System information (p. 69)
- FAV button (p. 70)
- Importing/exporting stored locations (p. 71)

Route options - avoid area

Create restricted areas in order to avoid guidance through e.g. certain cities or districts.



Settings → Route options → Avoid area

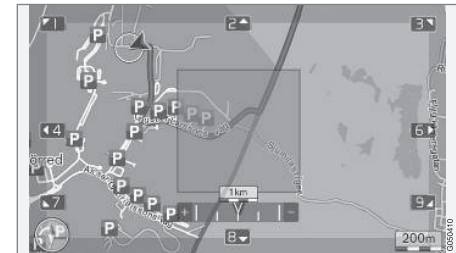
The function ignores a whole map area when calculating the route outline. Can be used for avoiding guidance through a particular area. The exception is motorways, which are also used for calculation in a "deselected/restricted" map area.



Settings → Route options → Avoid area
→ Avoid new area → Select area on map

Creating a restricted area

An area that shall be avoided is selected by highlighting directly on the map with a square zone/a "box".



To create and store a restricted area:

1. Scroll the map until the cursor is in the desired area.
2. Press **OK** - a red "box" is created.



11 Settings



3. Turn **TUNE** to adjust the size of the box.
4. Press **OK** when the box is covering the desired area - the area is stored and is shown in a list.

Activating a restricted area

A stored restricted area must then be activated in order to avoid guidance through it. Proceed as follows:



1. Select/highlight the area to be restricted + **OK**.
2. Select **Activate** + **OK** - the restricted area is activated and the system will not give guidance through it.

Deactivating a restricted area

In order to make an activated restricted area available for guidance again, it must first be deactivated:

1. Highlight the activated restricted area in the list + **OK**.
2. Select **Deactivate** + **OK** - the restricted area is deactivated and the system can once again give guidance through it.

The system can store several restricted areas, which can be activated/deactivated as required.

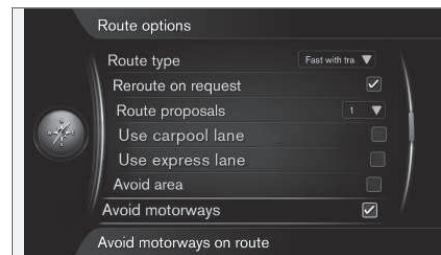
It is also possible to avoid guidance and block a subsection on a specific road/street, see (p. 54).

Related information

- Route options (p. 59)
- Route options - adapt route (p. 62)

Route options - adapt route

There is the option to deselect certain traffic suggestions, such as motorways or ferries.



Settings → Route options → Avoid motorways

In order to avoid one or more of the screen's listed suggestions along the route:
- Highlight the suggestion + **OK**.

Here are some examples⁴:

- **Avoid motorways**
- **Avoid toll roads**
- **Avoid tunnels**
- **Avoid ferries**
- **Avoid car trains**
- **Avoid vignette obligation**

⁴ Available options vary depending on market/area.



When the required options have been selected:

- Leave the menu with **EXIT** or **NAV**.

NOTE

- If an itinerary is entered when these selections are made then there may be a certain delay after an option has been ticked/unticked since the itinerary must be recalculated.
- If tunnels, toll roads and motorways are not selected then these are avoided as far as possible and are only used if no other reasonable alternative is available.

Related information

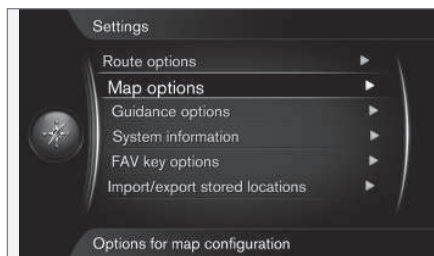
- Route options (p. 59)
- Route options - avoid area (p. 61)

Map options

Settings can be made here for how the map should be shown on the screen.

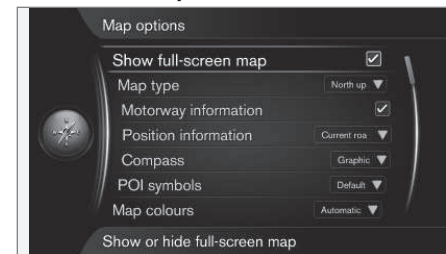
Examples of what can be set are:

- full screen map
- compass direction
- motorway information
- position information
- POI
- map colours.



Settings → Map options

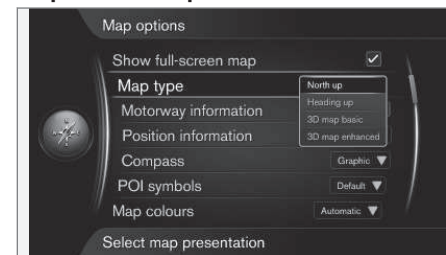
Full screen map



Settings → Map options → Show full-screen map

Highlighted option + **OK** shows the map across the whole screen without other car-related information, such as passenger compartment temperature or active radio transmitter in the lower and upper edge of the screen.

Map mode compass direction





11 Settings

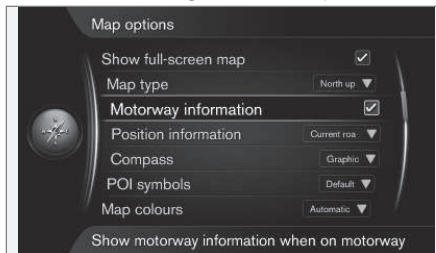


Settings → Map options → Map type

This is where to select how the map is shown on the screen. Activate the desired option with **OK**.

- **North up** - the map always shows North at the top of the screen. The car symbol moves in the relevant direction on the screen.
- **Map heading up** - the car symbol is in the centre and always points up on the screen. The map image rotates under the car symbol in relation to how the road bends.
- **3D map basic** - the map is viewed diagonally from above with the car symbol in the centre and direction of travel upward on the screen.
- **3D map enhanced** - same as the previous option but with different objects, buildings, etc. added into the map image.

Information along a motorway

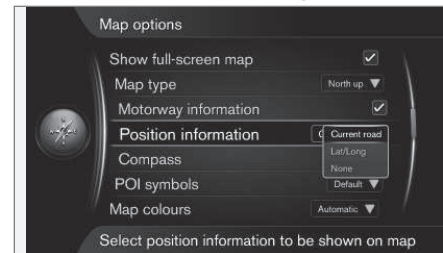


Settings → Map options → Motorway information

When the car is on a motorway the three (3) next exits that have e.g. a rest area or petrol station are shown. The list is sorted with the closest exit at the bottom of the list.

Cursor on **Motorway information** + **OK** gives a tick in the box and activates the function.

Information about current position



Settings → Map options → Position information

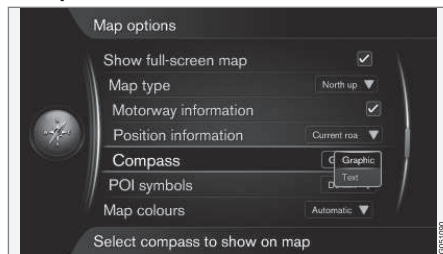
Activate the desired option with **OK**.

- **Current road** - the screen shows the name⁵ of the road/street where the car/cursor is located.
- **Lat/Long** - the screen shows the coordinates⁵ for the location where the car/cursor is located.
- **None** - the screen shows no information for the location where the car/cursor is located.

⁵ See example (p. 48).



Compass



Settings → Map options → Compass



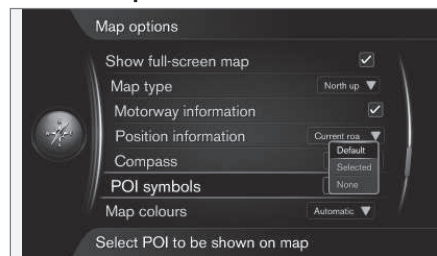
Select whether the compass direction (the direction in which the front of the car is pointing) on the screen's map image should be shown with a compass needle or with letters.



- **Graphic + OK** - a symbol indicates the compass direction.
- **Text + OK** - the letters **N** for north, **W** for west, **S** for south or **E** for east indicate compass direction.

The map image's compass direction - **north** or **direction of travel** upward on the screen - can also be adjusted, see earlier heading "Map mode compass direction".

POI⁶ on map



Settings → Map options → POI symbols

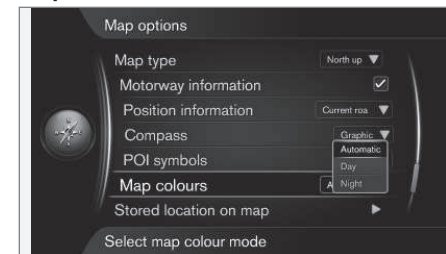
This is where to specify which POI should be shown on the map. Activate the desired option with **OK**.

- **Default** - POI specified with the function **Selected** is/are shown.
- **Selected** - select with the **TUNE** knob + **OK** for each POI required on the screen.
- **None** - no POI is/are shown.

For examples of POI, see Points of Interest (POI) (p. 79).

⁶ POI – Point of interest. Also denominated as "point of interest" and "facility".

Map colours



Settings → Map options → Map colours

Activate the desired option with **OK**.

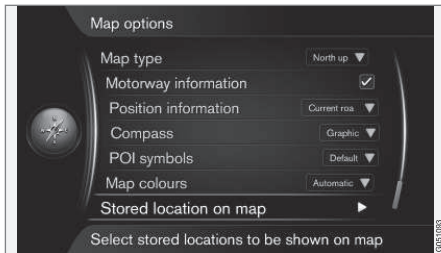
- **Automatic** - a light sensor detects whether it is day or night and adapts the screen automatically.
- **Day** - the colours and contrast of the screen become clear and sharp.
- **Night** - the colours and contrast of the screen are adapted to provide the driver with optimum night vision.



11 Settings



Stored location on map



Settings → Map options → Stored location on map

All stored locations are listed here.

- Highlight which should be visible on the map using the cursor + **OK** - leave the menu with **EXIT** or **NAV**.

Related information

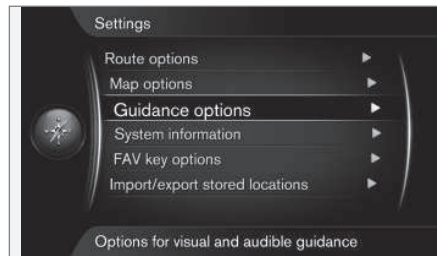
- Guiding options (p. 66)
- FAV button (p. 70)
- System information (p. 69)
- Importing/exporting stored locations (p. 71)

Guiding options

Settings can be made here for how guidance should be presented.

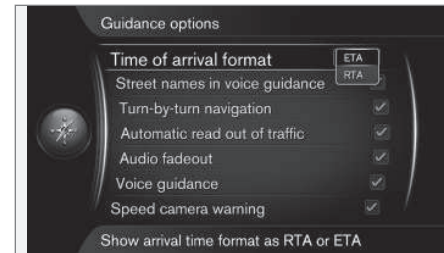
Examples of what can be set are:

- arrival time/remaining travel time
- street names in voice guidance
- guidance directly in the combined instrument panel
- automatic reading out of traffic information
- automatic audio adaptation
- voice guidance
- speed camera warning.



Settings → Guidance options

Arrival time or Remaining travel time

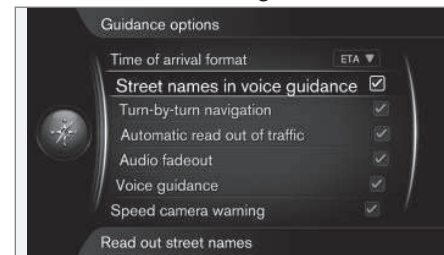


Settings → Guidance options → Time of arrival format

Activate the desired option with **OK**.

- **ETA** - shows the estimated arrival time
- **RTA** - shows the remaining time until arrival.

Street names in voice guidance⁷



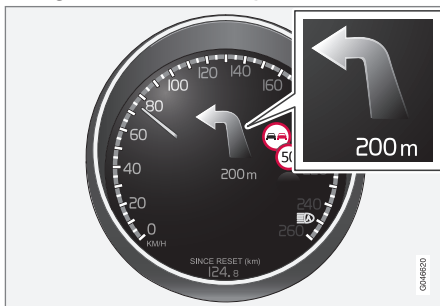
⁷ Only certain markets and languages.



Settings → Guidance options → Street names in voice guidance

Cursor on **Street names in voice guidance** + **OK** ticks/activates the function which means that voice guidance also reads out the names of streets and roads, in addition to the normal information on distance and direction.

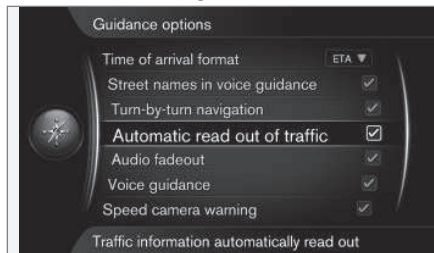
Navigation with Turn-by-turn



Settings → Guidance options → Turn-by-turn navigation

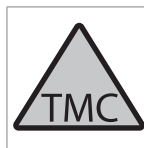
Cursor on **Turn-by-turn navigation** + **OK** ticks/activates the function, which means that the next manoeuvre in the itinerary, as well as the distance to it, is also shown in the combined instrument panel.

Automatic reading out of traffic



Settings → Guidance options → Automatic read out of traffic

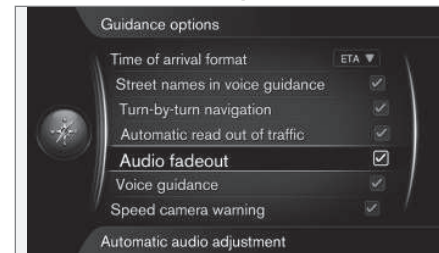
Cursor on **Automatic read out of traffic** + **OK** highlights/activates the function which means that important traffic disruptions on the route are read out.



This symbol on the screen indicates that traffic information is available within the current reception area. Symbol colour indicates the importance of the information:

- RED - the information is read out and the position is shown on the map - see (p. 73)
- YELLOW - no reading out, the position is shown on the map.

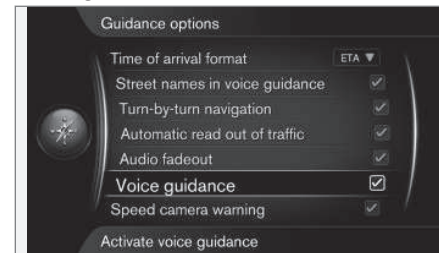
Automatic audio adaptation



Settings → Guidance options → Audio fadeout

Cursor on **Audio fadeout** + **OK** ticks/activates the function which means that e.g. audio from the radio is muted when voice guidance reads out information.

Voice guidance



Settings → Guidance options → Voice guidance



11 Settings



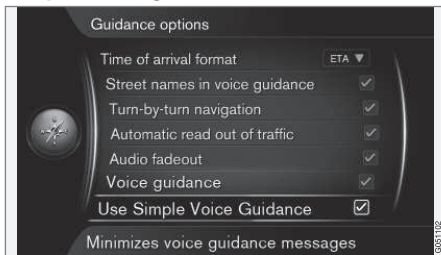
Cursor on **Voice guidance** + **OK** ticks/activates the function for reading out guidance.

NOTE

If this option is not highlighted then no voice guidance is given - in that case, only silent visual guidance is given.

For more information, see (p. 32).

Simple voice guidance

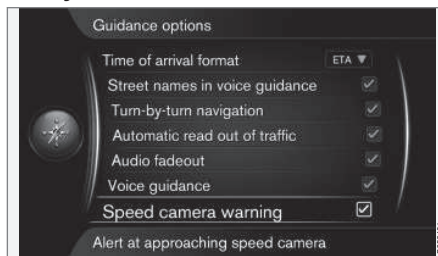


Settings → Guidance options → Use simple voice guidance

Normally there are three (3) instructions given before each guidance point - one preparatory, one immediately before and then the last one when the manoeuvre should be performed. With this function activated there is only one (1) instruction given for each guidance point.

- Cursor on **Use simple voice guidance** + **OK** sets a tick in the box and activates the function - leave the menu with **EXIT** or **NAV**.

Safety camera



Settings → Guidance options → Speed camera warning

The driver is alerted by means of an acoustic signal and a symbol when the car is approaching a safety camera.

- Cursor on **Speed camera warning** + **OK** sets a tick in the box and activates the function - leave the menu with **EXIT** or **NAV**.

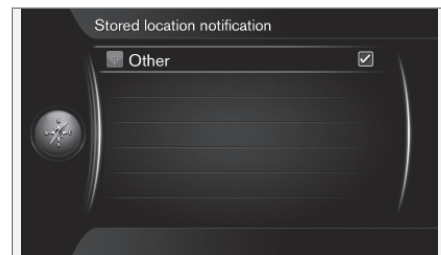
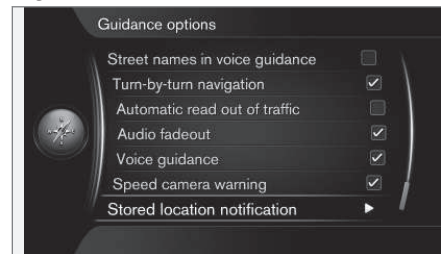
NOTE

The type of information permissible for inclusion on the map is stipulated in national legislation. For current information, see www.volvocars.com/navi.

NOTE

- Pay attention that the posted maximum permissible speed may sometimes be changed and accordingly deviate from the navigator's database.
- The driver always has the responsibility that the traffic and speed regulations in force are followed.

Signal for stored location





Settings → Guidance options → Stored location notification

The driver is alerted by means of an acoustic signal when the car is approaching a user-stored location.

1. Cursor on **Stored location notification** + **OK** sets a tick in the box and opens a list with all of the user's stored locations.
2. Use **TUNE** to select the locations that should not give an alert and deselect/deactivate with **OK** - leave the menu with **EXIT** or **NAV**.

Signal for POI in a guided round tour

Settings → Guidance options → Travel POI notification

The driver is alerted by means of an acoustic signal when the car is approaching a POI included in a "Travel guide" (guided round tour), see (p. 49).

- Cursor on **Travel POI notification** + **OK** sets a tick in the box and activates the function - leave the menu with **EXIT** or **NAV**.

i NOTE

Functions linked to Travel Guide are only accessible via a connected USB device containing Travel Guide information, see (p. 49).

Signal for guided round tour

Settings → Guidance options → Guided tour notification

The driver is alerted by means of an acoustic signal when the car is approaching a "Travel guide" (guided round tour), see (p. 49).

- Cursor on **Guided tour notification** + **OK** sets a tick in the box and activates the function - leave the menu with **EXIT** or **NAV**.

i NOTE

Functions linked to Travel Guide are only accessible via a connected USB device containing Travel Guide information, see (p. 49).

Related information

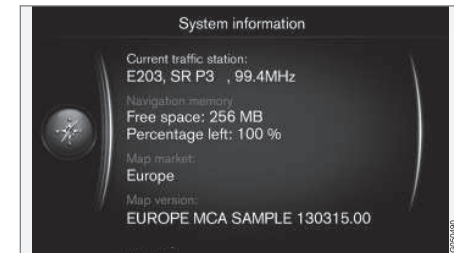
- Importing/exporting stored locations (p. 71)
- FAV button (p. 70)
- Map options (p. 63)
- System information (p. 69)

System information

System information shows the current status of the navigation system.



Settings → System information



Cursor on **Settings** → **System information** + **OK** shows a small excerpt of the current status in the navigation system, e.g. current transmitter of traffic information and operative map data as well as its version.



11 Settings

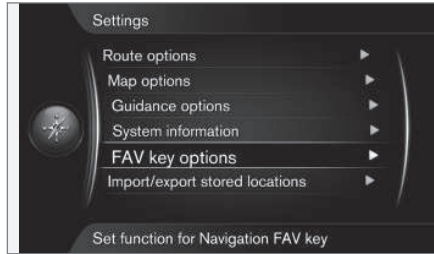


Related information

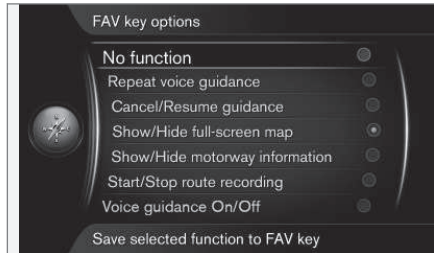
- Guiding options (p. 66)
- FAV button (p. 70)
- Map options (p. 63)
- Importing/exporting stored locations (p. 71)

FAV button

The **FAV** button can be programmed with different functions.



Settings → FAV key options



* FAV

The numerical keypad's **FAV** button can be programmed with one of the following options + **OK**:

- No function
- Repeat voice guidance

- Cancel/Resume guidance
- Show/Hide full-screen map
- Show/Hide motorway information
- Start/Stop route recording
- Voice guidance On/Off

Cursor on required option + **OK** activates the function - leave the menu with **EXIT** or **NAV**.

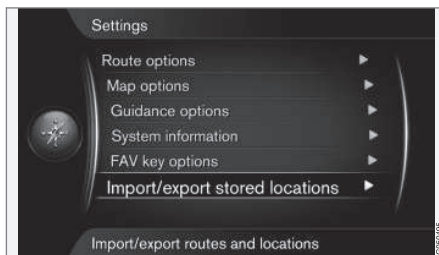
Related information

- Guiding options (p. 66)
- Importing/exporting stored locations (p. 71)
- Map options (p. 63)
- System information (p. 69)



Importing/exporting stored locations

Import and/or export stored routes and locations.



Settings → Import/export stored locations

The navigation system's stored routes and destinations/locations (see Stored locations

(p. 45)) can be copied over to a USB memory stick⁸.

The map database can also be supplemented with POI options from other sources via a USB memory stick, providing that the POI files are in the "gpx" format.

i NOTE

- Adding POI files to the map database requires a certain amount of computer knowledge!
- File format for POI files and how the files are downloaded from the Internet are determined by the respective manufacturer/distributor. Consequently there is no standardised process for downloading POI files from the Internet - and for this reason this owner's manual does not show an exact step-by-step description.
- If you have any questions - contact a Volvo dealer.

Related information

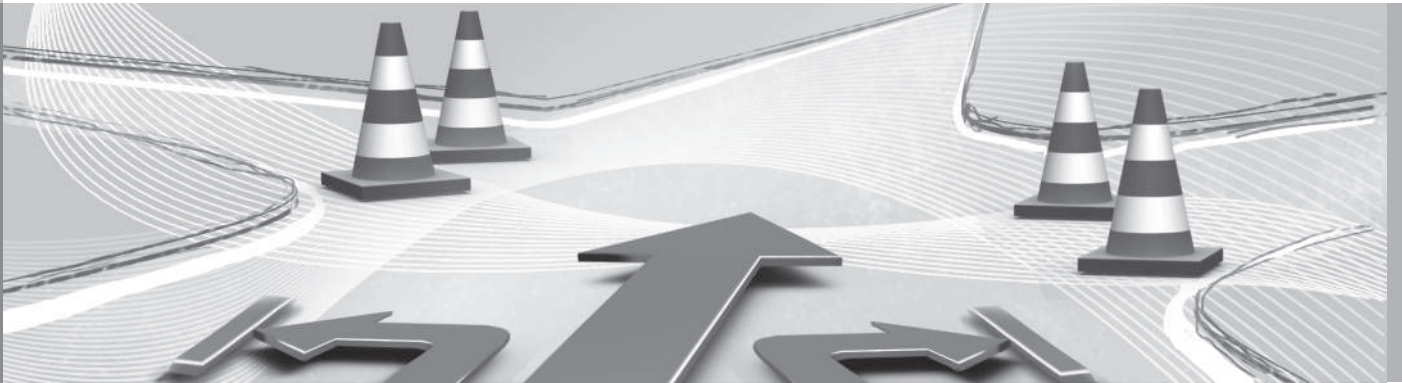
- Guiding options (p. 66)
- FAV button (p. 70)
- Map options (p. 63)
- System information (p. 69)

⁸ For information about connecting a USB memory stick, see the owner's manual for the car or the Sensus Infotainment supplement.

12



TRAFFIC INFORMATION



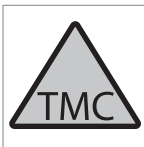


Traffic information

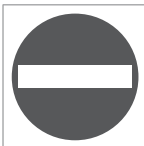
Shown here are symbols for the display of existing traffic information and instructions on how to open and learn about traffic information.

General

The navigation system continuously receives transmitted traffic information.



This symbol indicates that traffic information is available within the current reception area. Depending on the nature of the information, the symbol may be RED or YELLOW (p. 66).



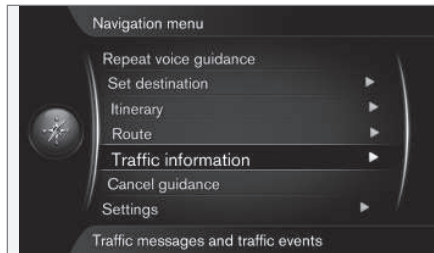
This symbol marks the position of a traffic problem - for more information, see the heading "Traffic on map" in section Traffic information - with specified destination (p. 74).

NOTE

Traffic information is not available in all areas/countries.

The traffic information transmission areas are constantly being expanded.

Opening traffic information



Traffic information

Cursor on **Traffic information** + **OK** shows information about traffic disruptions - but how the information is shown differs, depending on whether or not an Itinerary is specified.

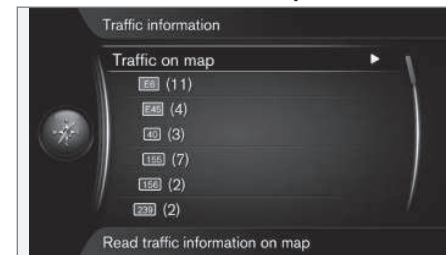
Related information

- Traffic information - with specified destination (p. 74)
- Traffic information - without specified destination (p. 73)
- Extent of traffic problem (p. 76)

Traffic information - without specified destination

The function allows you to show traffic problems without the specified destination having been selected.

Traffic information on map



Opens the scroll function on the map.

Traffic information → Traffic on map

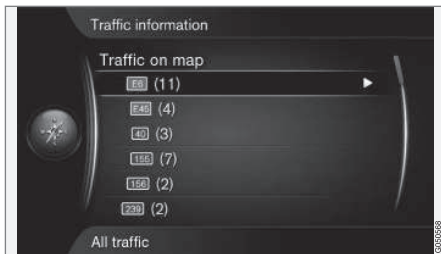
Cursor on **Traffic on map** + **OK** enables the option to search for traffic problems with the scroll function - see the description under the heading "Traffic on map" (p. 74).



12 Traffic information



All traffic



Traffic information within reception area.

Cursor on a road/street + **OK** opens the same function and menu as the following chapter "With specified destination", and the heading "All traffic" is shown, see (p. 74).

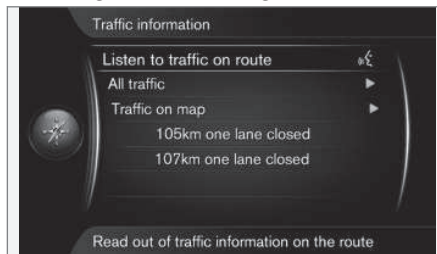
Related information

- Traffic information - with specified destination (p. 74)
- Traffic information (p. 73)
- Extent of traffic problem (p. 76)

Traffic information - with specified destination

The function shows traffic problems when the destination has been entered. Shows traffic information (p. 73) on the map with the scroll function (p. 36).

Listening to traffic along the route



Traffic information → Listen to traffic on route

Cursor on **Listen to traffic on route** + **OK** activates the reading out of current traffic messages along the itinerary's route.

All traffic



Traffic information → All traffic

Cursor on **All traffic** + **OK** lists all traffic messages within the reception area.

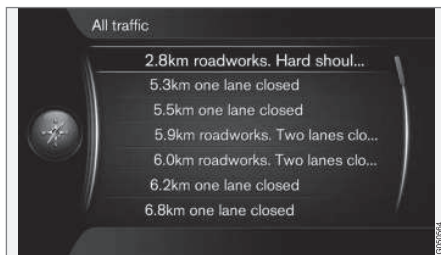


Traffic information within reception area.

Traffic information is first grouped according to country (in border areas), then road number and then street name.



Cursor on a road/street + **OK** gives specific traffic information highlighted road/street - see next figure:



Specific traffic information.

Traffic information for a specific road/street is listed according to the criterion of most serious disruption at the top, e.g. total stop in a lane.

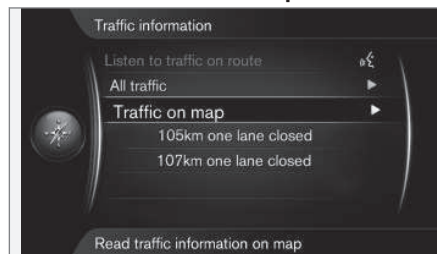
Cursor on a traffic problem + **OK** shows further information and position on map - see next figure:



Traffic problem on map.

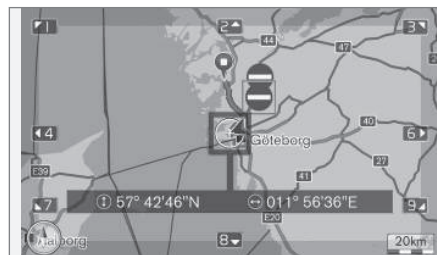
The map image is centred around the position of the traffic problem.

Traffic information on map



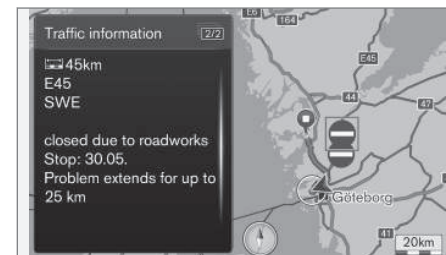
Traffic information → Traffic on map

Cursor on **Traffic on map** + **OK** enables the option to search for traffic problems with the scroll function (p. 36).



Use the scroll function to show information about a specific traffic problem.

1. Scroll the crosshair to the traffic event/symbol about which detailed information is required - a yellow frame illuminates around the symbol.
2. Press **OK** - after which, information is shown similar to that in the following figure:



Information about a traffic problem is tied to each respective symbol, and depending on the extent to which details are available the following may, for example, be shown:

- street name/road number
- country
- nature of the problem
- extent of the problem
- duration of the problem.

If there are several traffic problems within the crosshair frame then the one closest to the centre of the crosshair is shown first.

Figures such as "2/5" in the upper part of the screen mean that the information shown is



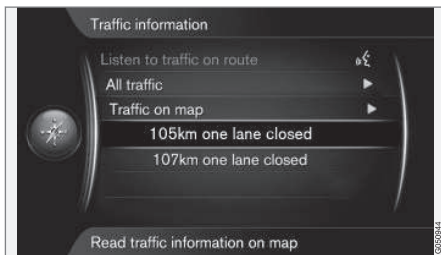
12 Traffic information



number 2 of a total of 5 messages within the crosshair - remaining messages are browsed to using repeated short presses on **OK**.

- Return to map display with **EXIT** or **NAV**.

Direct listed information



Traffic information → Traffic on map

Direct listed traffic problems, e.g. "105 km one lane closed" indicate that the information affects the current itinerary.

Cursor on a traffic problem + **OK** shows further information and position on map - see next figure:



Traffic problem on map.

The map image is centred around the position of the traffic problem.

Related information

- Traffic information (p. 73)
- Traffic information - without specified destination (p. 73)
- Extent of traffic problem (p. 76)

Extent of traffic problem

This function shows an overview of the extent of the traffic problem.



Traffic problem with its extent.

Certain traffic problems are not just tied to one single position, but can cover a longer section.

In addition to the symbol for the position of the traffic problem, the current distance is also highlighted with a row of red crosses "xxxxx".

- The length of the highlighting corresponds to the extent (distance) of the traffic problem.
- Driving direction is indicated by the side of the road that is highlighted.

Size of area for traffic information

The scale of the map determines how much traffic information (p. 73) can be shown - the larger the map area shown on the screen, the more traffic disruptions can be displayed.



Related information

- Traffic information (p. 73)
- Traffic information - without specified destination (p. 73)
- Traffic information - with specified destination (p. 74)

13



SYMBOLS ON THE MAP

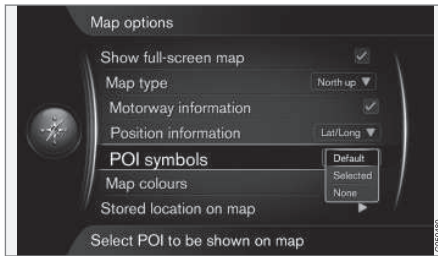




Points of Interest - POI

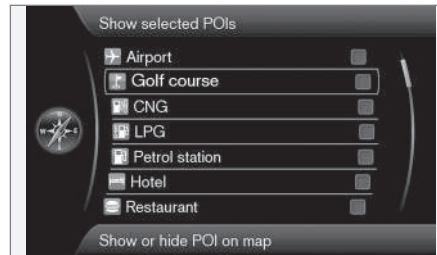
Shown here is how to select points of interest for showing on the map and how symbols for different facilities can appear.

"Point of interest" is also denominated as "facility" and "POI"¹.



Settings → Map options → POI symbols

Specify which POI options should be shown on the map by selecting **Default**, **Selected** or **None**. For more information - see the heading "POI on map" (p. 63).



Pre-ticked POI options are shown on the map.

- Select/highlight POI with the **TUNE** knob - tick/untick using **OK** and close with **EXIT**.

To avoid making the map image difficult to read, the number of POI options that can be viewed simultaneously on the screen is limited - zooming into an area provides the opportunity to view several POI options.

NOTE

- The symbol for a POI and the number of POIs varies between different markets.
- Symbols may appear and others disappear in conjunction with updating the map data - you can browse through all the symbols for the relevant map system in the menu system under **Settings → Map options → POI symbols → Selected**.

Shown here are some examples of symbols for different POI options - they are grouped here according to their function in society:

	Car dealer/repair
	Petrol station
	Car repair
	Parking
	Tourist attraction
	Golf

¹ Point of interest.



13 Symbols on the map



	Cinema
	Amusement park Recreation
	Restaurant
	Bar or cafe
	Shopping centre
	Hotel
	Railway transport
	Railway station Railway access
	Airport
	Bus station
	Ferry terminal
	Government or community facility Government office
	Police/emergency
	Library

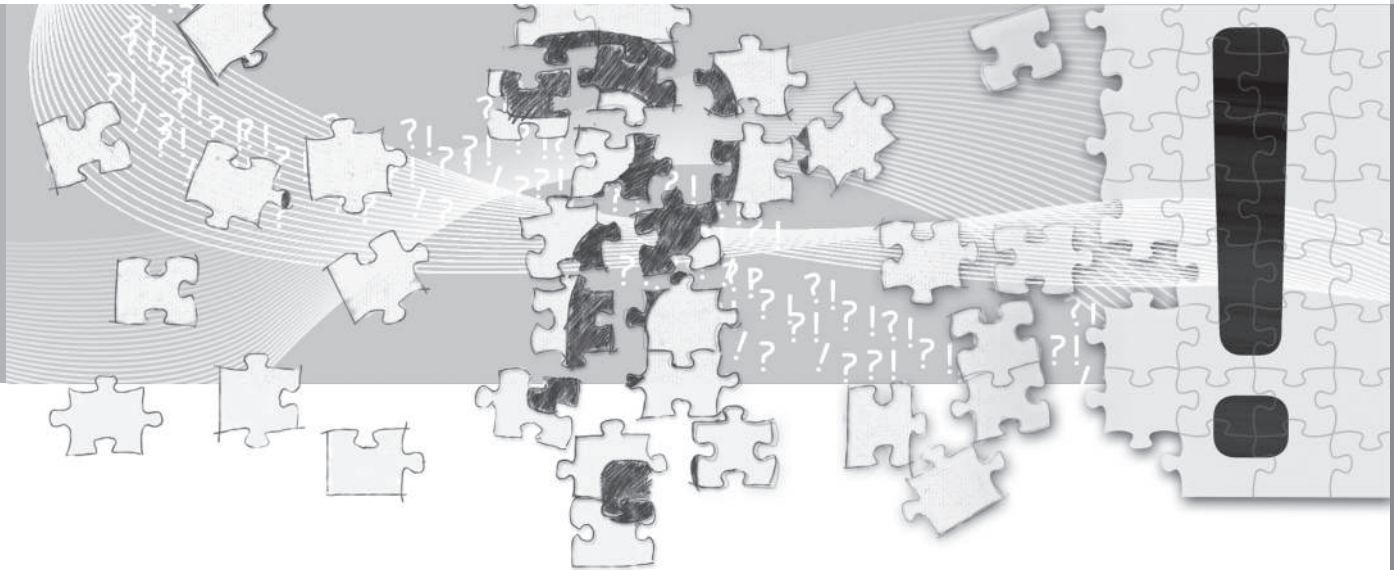
	Hospital or health care facility
	Pharmacy
	Cash dispenser ATM/Bank exchange
	Post office
	Education facility

Related information

- Search via POI (p. 44)

14

QUESTIONS AND ANSWERS



Frequently asked questions

The position of the car on the map is wrong

The Navigation system shows the position of the car to an accuracy of about 20 metres.

There is a greater chance of error when driving on roads lying parallel to another road, on winding roads, on roads on several levels and after driving a long distance without making any distinctive turns.

High mountains, buildings, tunnels, viaducts, over/underpasses etc. also have a negative affect on the reception of GPS signals, which means that accuracy in calculating the position of the car may decrease.

The system does not always calculate the fastest/shortest route

When calculating a route outline, distance, width of road, type of road, number of right or left turns, roundabouts etc. are all taken into account in order to produce the best theoretical route. A more efficient selection of route may be possible based on experience and knowledge of the area.

The system uses toll roads, motorways and ferries even though I chose to avoid them

For technical reasons, the system can only use major roads when calculating a route outline extending over a long distance.

If you selected to avoid toll roads and motorways, then they are avoided to the greatest possible extent and are only used if there is no other reasonable alternative available.

The position of the car on the map is incorrect after transportation

If the car is transported, for example by ferry or train, or in such a way as to impede the reception of GPS signals, it can take up to 5 minutes before the position of the car is correctly calculated.

The position of the car on the map is incorrect after the car battery has been disconnected

If power has been cut from the GPS antenna, it can take more than 5 minutes for the GPS signals to be received correctly and the position of the car to be calculated.

The car symbol on screen behaves erratically after a tyre change

In addition to the GPS receiver, the car's speed sensor and a gyro assist in calculating the current position and direction of travel of the car. After fitting the spare wheel or changing between summer and winter tyres the system needs to "learn" the size of the new wheels.

In order for the system to work optimally it is recommended to turn the steering wheel to full lock a few times while driving, in a suitable location.

The map image does not correspond with the real situation

Factors such as the constant expansion and rebuilding of the road network, new traffic regulations constantly being introduced etc. mean that the map database is not always complete.

Continuous development and updating of map data is underway - a Volvo dealer can provide more information.

See also www.volvocars.com/navi and www.volvocars.com/mapupdate for further information about maps, etc.

The scale of the map sometimes changes

There is no detailed map information in certain areas. The system then automatically changes the degree of magnification.

The car symbol on screen jumps forwards or spins

The system may need a few seconds to sense the position and movement of the car before driving off.

Switch off both the system and the engine. Start again, but remain stationary for a while before starting to drive.



I shall go on a long trip but do not want specify a particular route outline to the cities I plan to travel through - How do I most simply create an itinerary?

Specify the destination directly on the map using the hairline cross. The system automatically guides you to the final destination even though you are driving beside the intermediate destinations.

My map information is not up-to-date

Contact your nearest Volvo Dealer regarding the updating of map data.

See also www.volvocars.com/navi or www.volvocars.com/mapupdate.

How can I easily check which map version is used?

Search in the menu system for **Settings** → **System information** + **OK** in order to obtain information about version and the geographic area covered, see (p. 69).

15



MAP AND SYSTEM INFORMATION





Maps - content

Volvo offers a number of maps that cover different parts of the world. A map consists of map data and road data with related information.

Maps are developed with enhanced information and are updated continuously.

NOTE

Map data does not have 100 percent coverage in all areas/countries.

The system's coverage area is under constant construction and updating may sometimes be necessary.

See www.volvocars.com/navi and www.volvocars.com/mapupdate for further information about maps and other information related to Sensus Navigation.

Map areas

The car's navigation system varies depending on market. Should you need to modify the map area - contact a Volvo dealer for information on how to proceed.

Updating the maps

During the update, new information is transferred to the navigation system and old outdated information is deleted.

Updated map data is downloaded from the Internet¹ to a USB memory stick². The transfer of the downloaded update to the car's navigation system then takes place via the car's USB connection³.

NOTE

Before update of the car's map data is started:

- First read through the information and instructions from the Internet related to the download and update of map data.

In the event of any questions about updating - contact a Volvo dealer or see www.volvocars.com/navi and www.volvocars.com/mapupdate.

Updating

Follow the onscreen instructions in order to update the navigation system - this shows the progress of the update process as well as approximate time remaining.

NOTE

A number of the Infotainment functions are disabled or reduced during updating.

Proceed as follows:

1. Start the engine.
2. Connect the USB memory stick containing the update to the car's USB connector and follow the onscreen instructions.
3. When the screen shows **Map update finished** all navigation system functions can once again be used.

NOTE

In certain cases, updating map data may also add new functions, which are not described in this manual.

Continue an interrupted update

If the update is not complete when the engine is switched off, the process continues from where it left off the next time you start the engine.

Proceed as follows to restart an interrupted update and follow the onscreen instructions:

¹ See information on www.volvocars.com/mapupdate

² The USB memory stick must have at least 20 GB of space available.

³ For information about connecting a USB memory stick, see the owner's manual for the car or the Sensus Infotainment supplement.



- If the USB memory stick is plugged into the USB connector, the update is resumed automatically.
- If the USB memory stick is not connected: - Start the engine and then plug the USB memory stick into the car's USB connector - the update is resumed automatically.

License agreement

A license is an agreement for the right to operate a certain activity or the right to use someone else's entitlement according to the terms and conditions in the agreement.

The following text is Volvo's agreement with the manufacturer/developer.

Copyright

Europe

Austria

© Bundesamt für Eich- und Vermessungswesen.

Contains content of Stadt Wien – data.wien.gv.at, licensed in accordance with <http://creativecommons.org/licenses/by/3.0/legalcode> .

Contains content of Statdt Linz – data.linz.gv.at, licensed in accordance with <http://creativecommons.org/licenses/by/3.0/legalcode> .

Contains content of LINZ AG – data.linz.gv.at, licensed in accordance with <http://creativecommons.org/licenses/by/3.0/legalcode> .

Belgium

Realized by means of Brussels UrbIS®© – Distribution & Copyright CIRB, available at <http://www.cirb.irisnet.be/catalogue-de-services/urbis/telechargement> .

Includes content made available by AGIV.

Croatia

© EuroGeographics.

Cyprus

© EuroGeographics.



Estonia

© EuroGeographics.

Finland

Contains data from the National Land Survey of Finland Topographic Database 06/2012. (Terms of Use available at http://www.maanmittauslaitos.fi/en/NLS_open_data_licence_version1_20120501) .

Contains data that is made available by Itella in accordance with the terms available at: http://www.itella.fi/liitteet/palvelutjatuotteet/yhteystietopalvelut/uusi_postal_code_services_service_description_and_terms_of-user.pdf. Retrieved by HERE 09/2013".

France

Source: © IGN France 2009 – BD TOPO ® .

Germany

Die Grundlagendaten wurden mit Genehmigung der zuständigen Behörden entnommen.

Contains content of „Bayrische Vermessungsverwaltung – www.geodaten.bayern.de“, licensed in accordance with <http://creativecommons.org/licenses/by/3.0/legalcode> .

Contains content of “LGL, www.lgl-bw.de”, licensed in accordance with <http://creativecommons.org/licenses/by/3.0/legalcode> .

Contains Content of “Stadt Köln – offenedaten-koeln.de”, licensed in accordance with <http://creativecommons.org/licenses/by/3.0/legalcode> .

Great Britain

Contains Ordnance Survey data © Crown copyright and database right 2010.

Contains Royal Mail data © Royal Mail copyright and database right 2010.

Greece

Copyright Geomatics Ltd.

Guernsey

©The States of Guernsey

©Teh States of Alderney

©The Chief Pleas of Sark

©The Royal Court of Guernsey

Hungary

Copyright © 2003; Top-Map Ltd.

Ireland

Contains data made available by the Dublin City Council Multi Story Car Parking Space Availability as of 2013-11-02, licensed in accordance with <http://psi.gov.ie/files/2010/03/PSI-Licence.pdf> .

Italy

La Banca Dati Italiana è stata prodotta usando quale riferimento anche cartografia

numerica ed al tratto prodotta e fornita dalla Regione Toscana.

Contains data from Trasporto Passeggeri Emilia-Romagna- S.p.A.

Includes content of Comune di Bolgona licensed under <http://creativecommons.org/licenses/by/3.0/legalcode> and updated by licensee July 1, 2013.

Includes content of Comune di Cesena licensed under <http://creativecommons.org/licenses/by/3.0/legalcode> and updated by licensee July 1, 2013.

Includes contents of Ministero della Salute, and Regione Sicilia, licensed under <http://www.formez.it/iody/> and updated by licensee September 1, 2013.

Includes contents of Provincia di Enna, Comune di Torino, Comune di Pisa, Comune di Trapani, Comune di Vicenza, Regione Lombardia, Regione Umbria, licensed under <http://www.dati.gov.it/iody/2.0/> and updated by licensee September 1, 2013.

Includes content of GeoforUs, licensed in accordance with <http://creativecommons.org/licenses/by/3.0/legalcode> .

Includes content of Comune di Milano, licensed under <http://creativecommons.org/licenses/by/2.5/it/legalcode> and updated by licensee November 1, 2013.



15 Map and system information



Includes content of the “Comunità Montana della Carnia”, licensed under <http://www.dati.gov.it/iodl/2.0/> and updated by licensee December 1, 2013.

Includes content of “Agenzia per la mobilità” licensed under <http://creativecommons.org/licenses/by/3.0/legalcode> and updated by licensee January 1, 2014.

Includes content of Regione Sardegna, licensed under <http://www.dati.gov.it/iodl/2.0/> and updated by licensee May 1, 2014

Latvia

© EuroGeographics.

Lithuania

© EuroGeographics.

Moldova

© EuroGeographics.

Norway

Copyright © 2000; Norwegian Mapping Authority Includes data under the Norwegian licence for Open Government data (NLOD), available at <http://data.norge.no/nlod/en/1.0> .

Contains information copyrighted by © Kartverket, made available in accordance with <http://creativecommons.org/licenses/by/3.0/no/> .

Poland

© EuroGeographics.

Portugal

Source: IgeoE – Portugal.

Slovenia

© EuroGeographics.

Spain

Información geográfica propiedad del CNIG.

Contains data that is made available by the Generalitat de Catalunya Government in accordance with the terms available at http://www.gencat.cat/web/eng/avis_legal.htm . Retrieved by HERE 05/2013.

Contains content of Centro Municipal de Informatica – Malaga, licensed in accordance with <http://creativecommons.org/licenses/by/3.0/legalcode> .

Contains content of Administración General de la Comunidad Autónoma de Euskadi, licensed in accordance with <http://creativecommons.org/licenses/by/3.0/legalcode> .

Sweden

Based upon electronic data © National Land Survey Sweden.

Contains public data, licensed under Go Open v1.0, available at <http://data.goteborg.se/goopen> .

Switzerland

Topografische Grundlage: © Bundesamt für Landestopographie.

Ukraine

© EuroGeographics.

United Kingdom

Contains public sector information licensed under the Open Government License v.1.0 (see the license <http://www.nationalarchives.gov.uk/doc/open-government-licence/>).

Adapted from data from the Office for National Statistics licensed under the Open Government Licence v.1.0.



A

Additional information.....	34
Aerial	
location.....	16
Avoid	
ferries.....	62
motorways.....	62
toll roads.....	62
Avoid stretch of road.....	54

B

Basic functions.....	9
Basic settings.....	13
Battery	
remote control.....	19
Brackets with English text.....	14

C

Change scale for traffic information.....	76
Compass.....	32
Component positioning, overview.....	16
Controls.....	18
centre console.....	18

overview.....	16
remote control.....	19
steering wheel.....	18
Copyright.....	86
Crosshair.....	36

D

Daisy wheel	
entering and selecting options.....	27
list of options.....	28
Delete itinerary.....	52
Destination.....	41
search via address.....	42
search via home.....	41, 49
search via Internet.....	46
search via latitude/longitude.....	47
search via POI.....	44
search via point on map.....	48
search via post code.....	47
search via previous destinations.....	46
search via stored location.....	45

Distance unit

ETA.....	66
RTA.....	66

E

English text in brackets.....	14
Enter an itinerary.....	51
ETA, distance unit.....	66

F

Facilities

Symbols.....	79
--------------	----

Factory settings.....	13
-----------------------	----

Functions

keypad and remote control.....	19
--------------------------------	----

G

GPS receiver.....	17
-------------------	----

Guidance

quick guide.....	10
------------------	----

Guiding options.....	59, 61, 62
----------------------	------------

I

Internet search.....	46
Itinerary.....	51
waypoints in itinerary.....	52

J

Junction.....	42
---------------	----

K

Keypad	
location.....	17

L

Latitude and longitude.....	47
License agreement.....	86
Loudspeaker	
location.....	17

M

Main unit	
location.....	17
Map areas.....	85
Map colour.....	63
Map image.....	30
Map mode.....	13
Map options.....	63
Maps	
contents.....	85
updating.....	85
Maps, road types and compass	
compass.....	32
map of current position.....	30
Voice guidance.....	32
Map scroll.....	36
Map view.....	63
Menus.....	34
main menu.....	35
Scroll menu.....	36
shortcuts.....	34
Menus/functions.....	37

N

Next destination in itinerary.....	55
------------------------------------	----

O

Overview component location.....	16
Owner's manual.....	13
points to remember.....	13

P

Points of Interest (POI).....	79
Post code	
search.....	47
Previous destination as destination.....	46
Propagation.....	76

R

Read traffic message.....	74
Route	
alternative routes and route overview..	54
Avoid.....	54
detailed route information.....	55

map of remaining route.....	56
record a route.....	57
Route options.....	62, 66
RTA, distance unit.....	66

S

Safety camera.....	68
Saved destinations.....	46
Scale	
change.....	76
Scrolling.....	36
Search	
post code.....	47
Search paths described in the manual.....	13
Set destination.....	41, 49
Settings	
FAV button.....	70
guiding options.....	66
importing/exporting stored locations... ..	71
Map options.....	63
route options.....	59
route options - adapt route.....	62
route options - avoid area.....	61
system information.....	69
Speed camera.....	68

Start guidance.....	51
Symbols	
facilities.....	79
System activation.....	9
System options.....	69
System settings.....	13

T

TMC receiver.....	17
Traffic information.....	17, 73
broadcast.....	73
extent of traffic problem.....	76
without specified destination.....	73
with specified destination.....	74
Transport of car.....	82
Travel guide.....	49
TV screen	
care.....	17

V

Voice commands (Voice control).....	22
Voice control.....	22
Voice guidance.....	32

Voice recognition.....	21
help functions and settings.....	22
Language.....	24
Volume control of voice messages.....	17

W

Waypoint.....	52
---------------	----

