



**XC60**

---

# **QUICK GUIDE**

WEB EDITION

---



## WELCOME TO YOUR NEW VOLVO!

This folder contains a selection of the most common functions in your particular car. The owner's manual and other manuals contain important information with all warnings and safety instructions.

The following symbols mean:



Different parts are pointed out in the overview images.



Instructions step-by-step.



It is particularly important to read the owner's manual.



Important information, warnings and safety instructions that must be read are listed on the last page.

Options are marked with an asterisk \*.

In addition, learn more about your particular car at [www.volvocars.com](http://www.volvocars.com)

### 01 Starting and driving

Remote control key  
Starting and switching off the engine  
Parking brake  
Keyless key system\*  
Wipers

### 02 Driver support in your car

BLIS\*  
Start/Stop function\*  
Pedestrian protection\*

### 03 Your driving environment

Adjusting the seat  
Adjusting the steering wheel  
Panorama roof\*  
Power operated tailgate\*

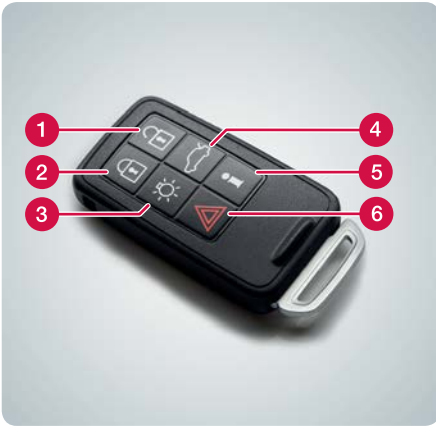
### 04 Functions in your car

Climate system controls  
Headlamp control  
Combined instrument panel  
Infotainment system  
Phone\*  
External audio device  
Buttons in the centre console  
Settings in the menu system

### 05 Tips

Car care  
Opening all windows  
Storage spaces  
AUX/USB\* and 12 V sockets

## How does the remote control key work? 01



- 1 Unlocks the doors and boot lid and disarms the alarm\*.
- 2 Locks doors and boot lid and arms the alarm.
- 3 Approach light duration.
- 4 Only unlocks the boot lid.
- 5 Information\* about the car.
- 6 Panic function

The remote control key can store settings including door mirrors and driver's seat\*.



## What do the remote control key indicator lamps\* show? 01



- 1 Green light: The car is locked.
  - 2 Yellow light: The car is unlocked.
  - 3 Red light: The alarm has been triggered.
- Flashing alternating red light: Alarm triggered less than 5 minutes ago.



## How do I start the engine? 01



- 1 Press the remote control key into the ignition switch.
- 2 Depress the clutch or brake pedal.
- 3 Briefly press the **START/STOP ENGINE** button and release - the engine starts.





## How do I switch off the engine?

01

- 1 Briefly press the **START/STOP ENGINE** button – the engine stops.
- 2 Take the remote control key out from the ignition switch.



## How do I use the parking brake?

01

### To apply

- 1 Depress the foot brake pedal.
- 2 Press the control **PUSH LOCK/PULL RELEASE** - the combined instrument panel's warning symbol starts to flash. Once there is a constant glow the parking brake is applied.
- 3 Release the foot brake pedal.

### To disengage

- 1 Depress the foot brake pedal.
- 2 Pull the control **PUSH LOCK/PULL RELEASE**.



## How does the Keyless\* key system work?

01

The key can remain in your pocket for example the whole time.

### Lock and arm the alarm (see illustration)

- Touch the rear section of one of the outer door handles.

### Unlock and disarm the alarm

- Grip a door handle and open the door in the usual way or press lightly on the tailgate's rubberised button.



## How do I start the windscreen wipers and rain sensor\*?

01



Move the lever downward to start the windscreen wipers and upward for a single sweep.

- 1 Rain sensor On/Off.
- 2 Regulates the sensor sensitivity or the intermittent delay.
- 3 Wiper, rear window - intermittent/normal.

## WHAT DOES BLIS DO\*?

02



**Blind Spot Information System** advises about vehicles in the blind spot and rapidly approaching vehicles.

- BLIS is activated when the engine is started and can be deactivated/reactivated by pressing the button.



## How do I use the Start/Stop function\*?

02

### Manual gearbox

Stop the engine: Declutch, set the gear lever in neutral position and release the clutch pedal.

Start the engine: Depress the clutch pedal.

### Automatic gearbox

Stop the engine: Stop the car with the foot brake and then maintain the brake pressure.

Start the engine: Release foot pressure on the foot brake.

Illuminated button lamp indicates that the function is active.



## How does the pedestrian protection work\*?

02



The car has Collision Warning with Auto Brake & Pedestrian Detection, which can warn, brake and/or stop for vehicles and pedestrians.

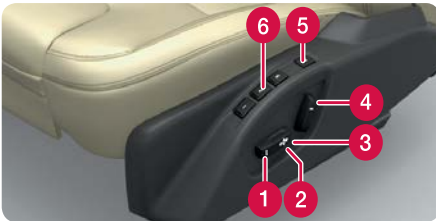
The function is only an aid and does not work in all situations – for example, it does not see pedestrians who are shorter than 80 cm or who are partially obscured.

It is important to understand this function thoroughly.



## How do I adjust the seat?

03



- 1 Raise/lower the front of the seat cushion.
- 2 Raise/lower seat.
- 3 Move the seat forward/backward.
- 4 Tilt the backrest.
- 5 Store settings for power seat\*.
- 6 Memory buttons for power seat.

### Store setting:

Hold the button depressed to store settings while depressing one of the memory buttons.

Seat settings can also be stored in the remote control key\*.



### How do I adjust the steering wheel?

03



- 1 Release the catch.
- 2 Adjust the steering wheel forward/backward and up/down.
- 3 Lock the steering wheel.



### How does the panorama roof\* work?

03



The first press operates the sun blind – the second the panorama roof.

- A Automatic maximum opening.
- B Manual opening.
- C Manual closing.
- D Automatic maximum closing.
- E Opening ventilation position.
- F Closing ventilation position.



### How do I open and close the power operated tailgate\*?

03



#### Opening

- Press lightly on the rubberised pressure plate under the outside handle. Alternatively, a long press on the lighting panel button or the remote control button until the tailgate starts to open.

#### Closing

- Press the button and the tailgate closes automatically.

The tailgate can also be opened/closed manually.

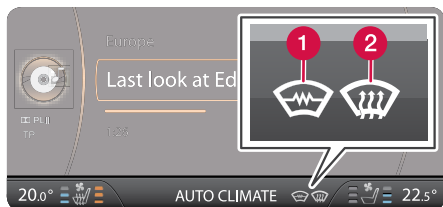




## How do I regulate the temperature with ECC\*?

04

- 1 Turn for individual temperature in the left/right-hand area of the passenger compartment. The screen shows the selected temperature.
- 2 Press **AUTO** for automatic control of air distribution and other functions. The screen shows **AUTO CLIMATE**.



## How do I defrost the windscreen?

04

- 1 Press to activate the windscreen's electric heating\* - symbol (1) in the screen illuminates.
- 2 The next press also activates maximum air flow against the windscreen and side windows - symbols (1) and (2) illuminate.
- 3 The next press switches off both of the functions - no symbol illuminates.

Without electric heating: Press to activate/deactivate the air flow.



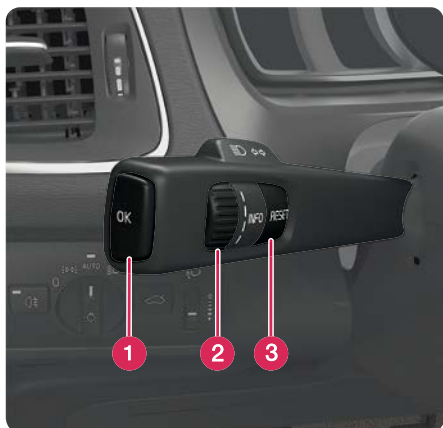
## How does the headlamp control's auto mode work?

04

The daytime running lights automatically switch between daytime running lights and dipped beam. Main beam can be activated when dipped beam is switched on. Active high beam (AHB)\* that dims and activates main beam automatically, or adapts the main beam pattern to traffic conditions, can be used. Tunnel detection\* is activated.







## How is the trip computer operated?

04

- 1 **OK** opens the trip computer's menu, activates the selected option and extinguishes messages.
- 2 Thumbwheel scrolls between the trip computer options.
- 3 **RESET** resets data in the selected trip computer step and goes back in the menu structure.



## How do I reset the trip meter?

04

- 1 Give two presses on the left-hand stalk switch **RESET** button.
- 2 Angle forward trip meter **T1** or **T2** with the thumbwheel.
- 3 Give a long press on **RESET** to reset to zero.



## How does the gear shift indicator work\*?

04

The gear shift indicator's arrows advise when it is appropriate to engage a higher or lower gear in order to obtain optimum driving economy. The illustration shows the digital\* combined instrument panel.

Analogue combined instrument panel.





## How do I change the combined instrument panel's appearance?

04

Different themes can be selected with the digital\* combined instrument panel, such as Performance or Eco.

To change the theme:

- 1 Press the left-hand stalk switch's **OK** button when the engine is running.
- 2 Turn the lever's thumbwheel in order to select menu option **Themes**.
- 3 Turn the thumbwheel to select a theme and press **OK** to confirm.

The theme is stored in the remote control key\*.



## How does the range/"km to empty tank" work?

04

The combined instrument panel shows an estimation of the possible driving distance based on previous driving conditions and remaining fuel quantity.

No guaranteed range remains when "...km" is shown. Refuel as soon as possible. The illustration shows the digital\* combined instrument panel.



Analogue combined instrument panel.



## How do I switch on and off Infotainment system?

04

- 1 Give a short press to activate the system.
- 2 Give a long press (until the screen switches off) in order to switch off.

To switch off the sound (MUTE): Give a short press - the next press reactivates.



## How do I navigate in the infotainment system?

04

- 1 Press **RADIO, MEDIA, MY CAR, NAV\*** or **TEL\*** to select main source.
- 2 Press **OK/MENU** or the thumbwheel\* in the steering wheel to access the selected source's main menu.
- 3 Turn **TUNE** or the thumbwheel to navigate in the menus.
- 4 Press **OK/MENU** or the thumbwheel to make a selection in the menus.

Briefly press **EXIT** to go back in the menu system, cancel a function or delete entered characters.

Give a long press on **EXIT** to go back to normal view, or to go from normal view to the main source view.

### Tips:

To go to the shortcut menu in the NAV or TEL mode, press once on **NAV** or **TEL**. Press again to go back to normal view.



## How do I connect a Bluetooth® phone?

04

- 1 Press **TEL\*** in the centre console.
- 2 Make the external device searchable/visible via Bluetooth®.
- 3 Press **OK/MENU** and follow the instructions on the screen. The device is now connected and can be controlled from the car.

In future the phone will be connected to the car automatically.

If the connection fails.





## How do I make a call?

04

- 1 Press **TEL\*** in the centre console.
- 2 Enter the required number or turn the thumbwheel on the steering wheel downward in order to access the phone book, and upward for the call register.
- 3 Press the thumbwheel to dial.

The call is interrupted with a press on **EXIT**.

For more ways to make a call with the phone.



## How do I answer the phone\*?

04

- Press the thumbwheel to accept incoming calls.

The call is rejected/interrupted with a press on **EXIT**.

For more ways to answer the phone.



## How do I connect an external audio device?

04

- 1 Connect an external device via AUX input or USB\* port in the centre console.
- 2 Press **MEDIA**.
- 3 Turn **TUNE** to the desired audio source.
- 4 Press **OK/MENU**.

For other connections of an external device.





## How do I set a GPS\* destination?

04

- 1 Press **NAV** to start the navigation system.
- 2 Press once again on **NAV** and select **Enter address** with **OK/MENU**.
- 3 Enter a search criterion/search criteria using the "daisy wheel" or the centre console's numeric keypad.
- 4 Then select **Set single destination** or **Add as waypoint** and press **OK/MENU**.

For more information and market deviations, see the RTI manual\*.



## What settings can be made in the menu system?

04

**MY CAR** handles many of the car's functions, e.g. settings for clock, door mirrors and locks.

See the earlier heading "How do I navigate in the infotainment system?" for which buttons to use.



## How do I set the clock?

04

- 1 Navigate to **Settings > System settings > Time** in **MY CAR**.
- 2 Press **OK/MENU** to activate the box for hour. Turn **TUNE** in order to set the hour and press **OK/MENU** to deactivate.
- 3 Turn **TUNE** in order to select the box for minute and press **OK/MENU**. Turn **TUNE** in order to set the minute and press **OK/MENU** to deactivate.
- 4 Turn **TUNE** to select **OK** and press **OK/MENU**.



### How should I wash the car??

05

Handwashing is gentler on the paintwork than an automatic car wash. The paintwork is also more sensitive when it is new. For this reason, handwashing is recommended during the first few months with a new car.

Use clean water and a washing sponge. Remember that dirt and grit can scratch the paintwork.



### How should I clean the leather upholstery\*?

05

Leather requires regular care in order to maintain appearance. For this reason, the leather upholstery should be treated using the Volvo Leather Care kit 1-4 times per year. The Volvo Leather Care kit is available for purchase from a Volvo dealer.



### How do I open all windows simultaneously?

05

- Press the remote control key's unlock button for at least 4 seconds to open all windows simultaneously.

## Where are the storage spaces located? 05

Shown here are some of the car's storage spaces.



The owner's manual shows the location of more storage spaces.



## Where are the AUX/USB\* and 12 V sockets located? 05

The remote control key must be at least in key position **I** in order for the 12 V sockets in the passenger compartment to work. The 12 V socket\* in the cargo area is always live.



#### How do I start the engine?



After a cold start the idling speed is high irrespective of outside temperature. It is part of Volvo's efficient emissions system. During cold starting, certain diesel engines have a delayed start due to preheating.

#### How does the Keyless\* key system work?



The use of gloves may prevent the Keyless function in the door handles.

#### What does BLIS do\*?



BLIS is a supplement - not a substitute for a safe driving style and the use of rearview and door mirrors. BLIS not work in sharp bends. BLIS does not work when the car is reversing.

#### How does the pedestrian protection work\*?



The function cannot detect all pedestrians in all situations and does not see, for example, partially obscured pedestrians, people in clothing that hides their body contour or pedestrians shorter than 80 cm. The driver is always responsible that the vehicle is driven in a correct manner and with a safety distance adapted to the speed.

#### How do I adjust the seat?



Adjust the driving position of the driver's seat correctly before setting off - never while driving. Make sure that the seat is in locked position in order to prevent personal injury in the event of sudden braking or an accident.

#### How do I adjust the steering wheel?



Adjust the steering wheel (after adjusting the seat) before setting off - never while driving.

#### How does the panorama roof\* work?



Children, other passengers or objects may be trapped by the panorama roof's moving parts. Always operate the panorama roof with caution. For manual operation, the sun blind must be in maximum open position before the roof can be operated. Take the remote control key with you when leaving the car.

#### How do I open and close the power operated tailgate?



Pay attention to the risk of crushing when opening/closing. Before opening/closing starts; check that no one is near the tailgate since a crushing injury can have serious consequences. Always operate the tailgate with caution. Do not use power tailgate operation under a low roof. If the system has worked continuously for a long time it is switched off to prevent overload. It can be used again after approx. 2 minutes.

#### How does the range/"km to empty tank" work?



A degree of incorrect indication may occur if the driving style is changed.

#### How should I clean the leather upholstery\*?



Some coloured clothing (e.g. jeans and suede garments) may discolour the upholstery. Never use strong solvents - they could damage the upholstery.

#### Where are the AUX/USB\* and 12 V sockets located?



Maximum current take-off is 10 A (120 W) in each socket.