



V60

PLUG-IN HYBRID





WEB EDITION

QUICK GUIDE

WELCOME TO YOUR NEW VOLVO!

This folder contains a selection of the most common functions in your particular car. The owner's manual and other manuals contain safety instructions and all warning, important and note texts.

The following symbols mean:

-  Different parts are pointed out in the overview images.
 -  Step-by-step instructions.
 -  It is particularly important to read the owner's manual.
 -  Warning, important and note texts, that must be read, are included on the last page.
- Options are marked with an asterisk *.

The owner's manual is available as a printed manual and digitally in the car's screen, on the Web and as a mobile app. The mobile app contains the whole owner's manual as well as instruction films and has several search paths with text and illustrations. The mobile app can be downloaded to mobile devices from App Store or Google play.

In addition, learn more about your car at www.volvocars.com.



01 Your hybrid car

- Drive mode
- Charging
- Preconditioning
- Mobile application

02 Starting and driving

- Remote control key
- Keyless* lock system
- Starting and switching off the engine
- Parking brake
- Wipers

03 Driver support in your car

- Pedestrian protection*

04 Your driving environment

- Adjusting the steering wheel
- Adjusting the seat

05 Functions in your car

- Climate system controls
- Headlamp control
- Combined instrument panel
- Infotainment system
- Phone*
- Internet*
- External audio device
- Buttons in the centre console
- Settings in the menu system
- Workshop/booking service*

06 Tips

- Refuelling
- Car care
- Storage spaces
- AUX/USB* and 12 V sockets



The car is powered by two motors - an electric motor and a diesel engine. Different drive modes can be selected. It is not possible to select the "wrong" drive mode - the car returns to the HYBRID mode if certain conditions are not met. The lamp in the hybrid button will then illuminate.

1 HYBRID

This is the car's preset drive mode. Both the motor and the engine are used - individually or in parallel. A computer determines what is most appropriate in each case.

2 PURE

The car is powered by the electric motor. Air conditioning is switched off in order to obtain the longest possible driving distance. The diesel engine starts automatically when the battery needs to be charged or when the driver requests more power than the electric motor can supply. The diesel engine is also used to provide all-wheel drive if required, e.g. when starting and on slippery surfaces.

3 POWER

Provides the best response and performance by means of both the electric motor and the diesel engine being activated the whole time. Driving in a lower gear is prioritised for active driving, which results in delayed upshifting.

4 AWD

All-wheel drive is activated. Primarily intended for low speed in slippery driving conditions when better grip and traction are required. The drive mode also has a stabilising effect at higher speeds.

5 SAVE

Maintains current energy level in the battery for later needs. In the event of low charge level the battery will also be charged to a level equivalent to approx. 20 km electric operation. Select **PURE** when electric operation is required.

Where is the charging cable located?

01

The charging cable is located in the storage compartment under the cargo area's floor hatch.



How do I open and close the hatch for the charging input socket?

01

- 1 Press in the rear section of the hatch and release.
- 2 Fold out the flap.
- 3 Pull away the cover for the charging input socket and secure it to the inside of the hatch.

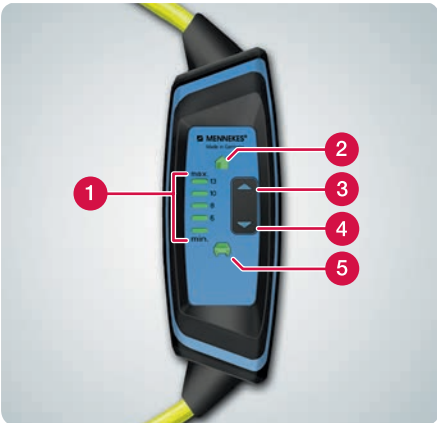
Close the hatch for the charging input socket in reverse order.



How does the control unit for the charging cable work*?

01

- 1 Illuminated symbol: Shows selected charging current.
- 2 Lit symbol: Cable connected to 230 V.
- 3 Increases the charging current.
- 4 Decreases the charging current.
- 5 Lit symbol: Cable connected to the car.




How do I start charging?

01



- 1 Connect the charging cable to the 230 V electrical socket.
- 2 Increase/decrease the charging current on the control unit*. Affects charging time and preconditioning.
- 3 Connect the charging cable to the car - the cable locks automatically into the charging input socket.

Press the button for approach lighting on the remote control key : the combined instrument panel then shows the remaining charging time. Charge status indicated via the charging input socket's lamps and the Volvo On Call* mobile app.




Approach lighting must be activated in MY CAR - see the owner's manual.



How do I stop charging?

01



- 1 Unlock the car with the remote control key's unlock button .
- 2 Detach the charging cable from the car.
- 3 Detach the charging cable from the 230 V electrical socket.
- 4 Refit the charging cable in the storage space under the cargo area's floor hatch.

The charging cable locks automatically into the charging input socket a little while after unlocking if it was not removed. Open the lock/inhibitor with the remote control key's unlock button.

What do the lamps for the charging input socket show?

01



White constant: Guide light

Yellow constant: Waiting mode

Green short flashes: Charging of low charge battery

Green long flashes: Charging of well-charged battery

Green constant or off: Charging complete

Blue: Timer switched on

Red: Error




Preconditioning is mainly used to optimise the car's electric drive system prior to a planned departure. The function heats/cool the passenger compartment and is activated via direct start in the combined instrument panel, the remote control key* or Volvo On Call* mobile app.

Activate via the combined instrument panel:


- 1 Press **OK** on the left-hand stalk switch.
- 2 Turn the thumbwheel* to **Preconditioning** and press **OK**.
- 3 Select between **Direct start**, **Timer**, **Outdoor parking** or **Indoor parking** (can only be activated if the car is being charged with the charging cable). Confirm with **OK**.

Activating via the remote control key*:

- Press the approach lighting button  for approx. 2 seconds. The car's direction indicators emit 5 short flashes, followed by a constant glow when preconditioning has been activated.

Check status via remote control key*:

 (see illustration)

- Press the information button  for approx. 2 seconds. The red indicator lamp emits 5 short flashes, followed by a constant glow when preconditioning is activate.



For more information on activation via mobile phone – see Volvo On Call* in the owner's manual.

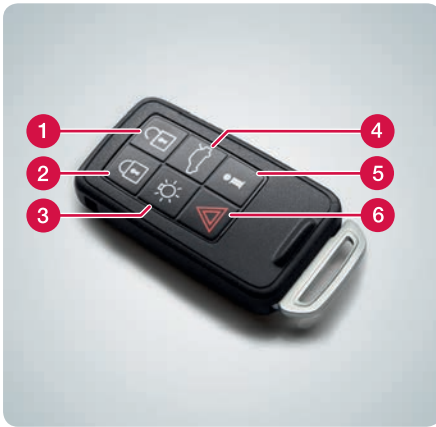


The Volvo On Call mobile application can be used anytime and anywhere. With a single touch of a button on the mobile phone, the car can be located and locked remotely, amongst other things, the combined instrument panel and charge status can be checked, and preconditioning can be set.

The mobile application is updated continuously. For more information – see Volvo On Call* in the owner's manual.

How does the remote control key work?

02



- 1 Unlocks doors and tailgate and disarms the alarm. The function can be set in MY CAR.
- 2 Locks doors and tailgate and arms the alarm.
- 3 Approach light duration.
- 4 Unlocks and disarms the alarm for the tailgate only.
- 5 Information*.
- 6 Panic function.

The remote control key can store settings for, amongst other things, door mirrors and power driver's seat* – see owner's manual.



What do the remote control key indicator lamps* show?

02

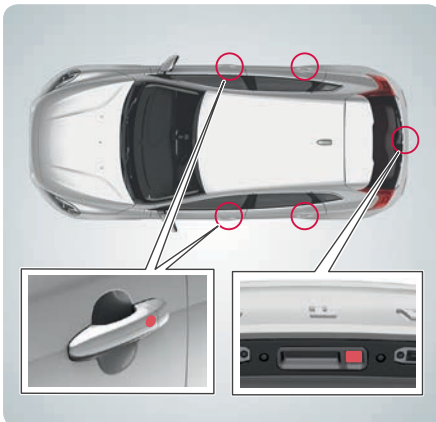


- 1 Green constant light: The car is locked.
- 2 Yellow constant light: The car is unlocked.
- 3 Red continuous light: the alarm has been triggered since the car was locked.
- 4 Red light flashing alternately in both indicator lamps: The alarm was triggered less than 5 minutes ago.



How does the Keyless* lock system work?

02



The remote control key can remain in a pocket, for example, the whole time.

Lock and arm the alarm

- Touch the rear section of one of the outer door handles or press lightly on the smaller of the tailgate's two rubberised buttons.

Unlock and disarm the alarm

- Grip a door handle and open the door in the usual way or press lightly on the larger of the tailgate's two rubberised buttons.



How do I start the engine?

02



Ensure that the charging cable has been removed before starting the car.

- 1 Push the remote control key into the ignition switch (does not apply to Keyless drive*).
- 2 Fully depress the brake pedal.
- 3 Briefly press the **START/STOP ENGINE** button and release. The electric motor is running when the digits in the speedometer or tachometer and side gauge are illuminated.



How do I switch off the engine?

02



- 1 Briefly press the **START/STOP ENGINE** button - the engine stops. The electric motor is switched off when the digits in the speedometer or tachometer and side gauge have extinguished.
- 2 Take the remote control key out from the ignition switch.

How do I use the parking brake?

02



To apply

- Press the control **PUSH LOCK/PULL RELEASE** - the symbol starts to flash. Once there is a constant glow the parking brake is applied.

To disengage

- 1 Depress the foot brake pedal.
- 2 Pull the control **PUSH LOCK/PULL RELEASE**.

Disengage automatically

- Drive away (for cars with automatic gearbox, the seat-belt must be buckled).

How do I start the windscreen wipers and rain sensor*? 02



Move the lever downward to start the windscreen wipers and upward for a single sweep.

- 1 Rain sensor On/Off.
- 2 Regulates the sensor sensitivity or the intermittent delay.
- 3 Wiper, rear window - intermittent/normal.

To lift up the wiper blades they must be in service position – see owner's manual.



How does the pedestrian protection work*? 03



Collision Warning with Auto Brake and Cyclist and Pedestrian Detection, which can warn, brake and/or stop for vehicles, cyclists and pedestrians.

The function is only an aid and does not work in all situations – for example, it does not see cyclists from the side and pedestrians who are shorter than 80 cm or who are partially obscured.

It is important to understand this function – see owner's manual.

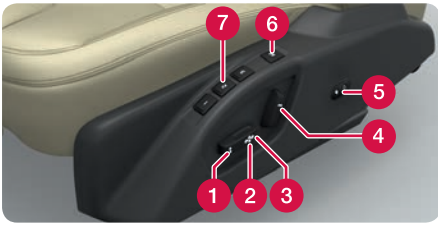


How do I adjust the steering wheel? 04



- 1 Release the catch.
- 2 Adjust the steering wheel forward/backward and up/down.
- 3 Activate the catch.





- 1 Raise/lower the front of the seat cushion.
- 2 Raise/lower the seat.
- 3 Move the seat forward/backward.
- 4 Tilt the backrest.
- 5 Lumbar support* adjustment.
- 6 Storing settings for power seat*.
- 7 Memory buttons for power seat*.

Store setting:

Hold the button depressed to store settings while depressing one of the memory buttons. Hold the buttons depressed until a signal is heard and text is shown in the combined instrument panel. This stores the position of the seat as well as the door mirrors. The position of the lumbar support is not stored.

The position for the door mirrors, and memory settings (not lumbar support) for the power seat, can also be stored in the remote control key* – see owner's manual.



- 1 Turn for individual temperature in the left/right-hand area of the passenger compartment. The screen shows the selected temperature.
- 2 Press **AUTO** for automatic control of air distribution and other functions. The screen shows **AUTO CLIMATE**.



How do I defrost the windscreen?

05



- 1 Press to activate air flows to the windows – the lamp in the defroster button illuminates.
- 2 Next press deactivates the function – no lamp illuminates.



How does the headlamp control's auto mode work?

05



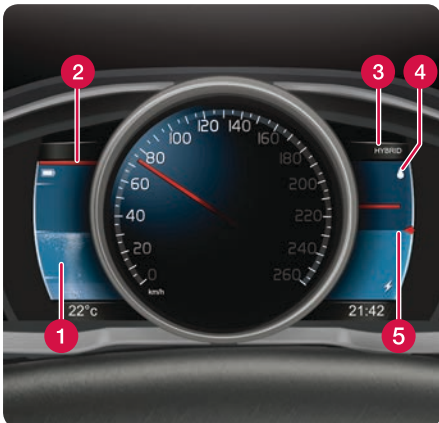
AUTO mode provides the following options:

- The daytime running lights automatically switch between daytime running lights and dipped beam.
- Main beam can be activated when dipped beam is switched on.
- Active high beam (AHB)* – that dims and activates main beam automatically, or adapts the main beam pattern to traffic conditions – can be used.
- Tunnel detection* is activated.

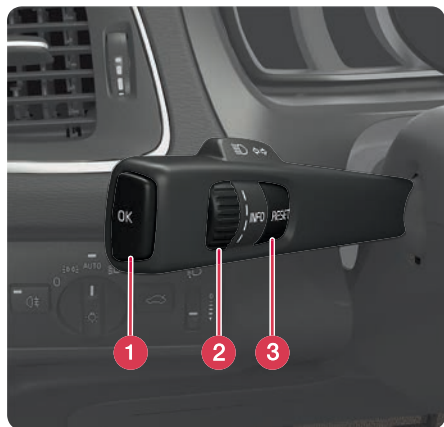


Which functions are shown in the combined instrument panel?

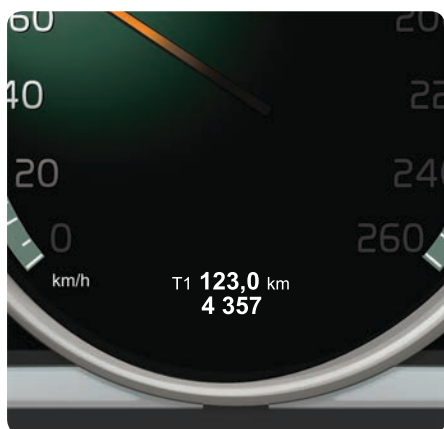
05



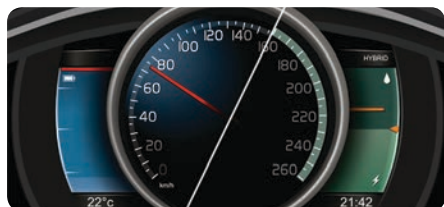
- 1 The hybrid battery gauge is shown with the Hybrid theme. "Bubbles" are shown when the electric motor generates power for the battery.
- 2 Current charging level.
- 3 Active drive mode.
- 4 The symbol is lit when the diesel engine is running.
- 5 Hybrid guide. Shows the limit for the diesel engine starting or stopping. Acceleration (large pointer) in relation to available electric motor output (small pointer).



- 1 **OK** opens the trip computer's menus, activates selected option and extinguishes messages.
- 2 Thumbwheel scrolls between the trip computer options.
- 3 **RESET** resets data in the selected trip computer step and goes back in the menu structure.



- 1 Turn the left-hand stalk switch thumbwheel to show trip meter **T1** or **T2**.
- 2 Give a long press on the **RESET** button in order to reset the trip meter shown.



Different themes can be selected with the combined instrument panel, such as Hybrid or Eco.

To change the theme:

- 1 Press the left-hand stalk switch's **OK** button when the engine is running.
- 2 Turn the lever's thumbwheel in order to select menu option **Themes** and press **OK**.
- 3 Turn the thumbwheel to select a theme and press **OK** to confirm.

The theme is stored in the remote control key memory* - see the owner's manual.



How do I switch on and off the Infotainment system?

05




- 1 A short press activates the system.
- 2 A long press (until the screen switches off) deactivates.

To switch off the sound: Give a short press - the next press reactivates.

Note that the whole of the Sensus system (including navigation* and phone functions*) is started/switched off at the same time.

How do I navigate in the infotainment system? 05



- 1 Press **RADIO**, **MEDIA**, **MY CAR**, **NAV***, **TEL*** or  to select the main source. The normal view for the last active source is shown in this position.
- 2 Press **OK/MENU** or the thumbwheel* in the steering wheel to access the selected source's main menu.
- 3 Turn **TUNE** or the thumbwheel to navigate in the menus.
- 4 Press **OK/MENU** or the thumbwheel to make a selection in the menus.

Briefly press **EXIT** to go back in the menu system, cancel a function or delete entered characters.

Give a long press on **EXIT** to go back to normal view, or to go from normal view to the main source view.

Tips:

To go to the shortcut menu from normal view, press once on the main source button. Press again to go back to normal view.



For more information about operating the system - see owner's manual.



How do I connect a Bluetooth® phone*?

05



- 1 In the normal view for the phone source, press **OK/MENU**.
- 2 Select **Make car discoverable** and confirm with **OK/MENU**.
- 3 Activate Bluetooth® in the mobile phone. Search for and connect the car to the phone.
- 4 Follow the instructions in the phone and the screen.

The phone is now connected and can be controlled from the car.

If registering the phone does not succeed – see owner's manual.



How do I connect to the Internet*?

05



- 1 Connect the mobile phone to the car (see "How do I connect a Bluetooth® phone?") and activate tethering in the phone.
- 2 In the normal view for the MY CAR source, press **OK/MENU**, select **Settings > Internet settings > Connect through**. Select one of the options **Car modem**, **Wi-Fi** or **Bluetooth**.

In future the car will automatically connect via the selected Internet connection.

For more information about connection - see owner's manual.




What services do I get with Volvo ID*?

05



Volvo ID is your personal ID registered to the car which can give you access to various services such as My Volvo web and the facility to send an address from the map service on the Internet directly to the vehicle.

Register or manage your Volvo ID as follows:

- 1 Press the Connect button .
- 2 Select **Apps > Settings** and follow the onscreen instructions.


For further information about Volvo ID - see owner's manual.





How do I use apps when the car is connected to the Internet*? 05

When the car is connected to the Internet, apps for music services, web radio, navigation services and simple web browsers can be used.

- 1 Press the Connect button .
- 2 Select **Apps** and press **OK/MENU** in order to show the available apps.
- 3 Select the app and confirm with **OK/MENU**.


Some apps require login using a separate account from the app/service supplier. Use existing account or register again. Follow the on-screen instructions.



How do I make a call*? 05

- 1 In the normal view for the phone source, enter the required number or turn the thumbwheel on the steering wheel downward in order to access the phone book, and upward for the call register.
- 2 Press the thumbwheel to dial.

The call is interrupted with a press on **EXIT**.


For more ways to make a call with the phone – see  owner's manual.



How do I answer the phone*? 05

- Press the thumbwheel to accept incoming calls.

The call is rejected/interrupted with a press on **EXIT**.

For more ways to answer the phone – see owner's  manual.

How do I connect an external audio device? 05



- 1 Connect an external device via the AUX or USB* inputs in the centre console's storage compartment.
- 2 In the normal view for the media source, press **MEDIA** in the centre console.
- 3 Turn **TUNE** to the desired audio source and press **OK/MENU**.

For other connections of an external device – see owner's manual.



How do I save radio stations in the preset list? 05



10 presets can be stored per wavelength (e.g. FM).

- 1 Tune into a station.
- 2 Hold in one of the preset buttons for a few seconds, the sound disappears during this time and returns when the station is stored.
- 3 The preset button can now be used.

For setting radio stations – see owner's manual.



How do I set a GPS* destination? 05



- 1 Press **NAV** to start the navigation system – a map is shown.
- 2 Press once again on **NAV** and select **Enter address** with **OK/MENU**.
- 3 Enter a search criterion/search criteria using the daisy wheel or the centre console's numeric keypad.
- 4 Then select **Set single destination** or **Add as way-point** and press **OK/MENU**.

For more information and market deviations regarding navigation* – see the separate supplement.

What settings can be made in the menu system? 05

Many of the car's functions are handled in MY CAR, e.g. settings for clock, door mirrors and locks. Trip Statistics and power flows are also shown graphically. In the normal view for the MY CAR source, press **OK/MENU** and select **Hybrid**:

- **Trip statistics**: shows average fuel consumption and average speed. Can provide assistance for fuel-efficient driving.
- **Power flow**: shows whether the engine or motor is driving as well as the energy flows.



How do I set the clock? 05

- 1 In the normal view for the MY CAR source, press **OK/MENU**.
- 2 Select **Settings > System options > Time settings**.
- 3 Turn **TUNE to Auto time** and press **OK/MENU** to activate automatic setting of the time.

Make sure you select the current location in order to set the correct time in the car.



How do I make a call to my workshop or book a service*? 05

- In the normal view for the MY CAR source, press **OK/MENU** and select **Service & repair**.

Under **Service & repair** is information about your chosen workshop that you registered in the My Volvo web portal. In **Dealer information** there is the option to call and send a booking request to the workshop (also available via My Volvo web). There is also the option to update workshop information and set the workshop as destination.



Only applies to certain markets.



How do I refuel?

06



- Press the button on the lighting panel to open the fuel filler flap - the flap is opened when the button is released.

The arrow on the symbol in the combined instrument panel shows which side of the car the fuel cap is located on.



How should I wash the car?

06



Handwashing is gentler on the paintwork than an automatic car wash. The paintwork is also more sensitive when it is new. For this reason, handwashing is recommended during the first few months with a new car.

Use clean water and a washing sponge. Remember that dirt and grit can scratch the paintwork.

How should I clean the leather upholstery*? 06



Leather requires regular care in order to maintain appearance. For this reason, the leather upholstery should be treated using the Volvo Leather Care kit 1-4 times per year. The Volvo Leather Care kit is available for purchase from a Volvo dealer.



Where are the storage spaces located?

06

Shown here are some of the car's storage spaces.



The owner's manual shows the location of more storage spaces.



Where are the AUX/USB* and 12 V sockets located?

06

The remote control key must be at least in key position I in order for the 12V sockets in the passenger compartment to work. The 12V socket* in the cargo area is always live.



How does the control unit for the charging cable work*?



Never use an extension cable. Only charge the car from grounded 230 VAC sockets. The ground fault breaker in the charging cable's control unit protects the car, but there may be a risk of overloading the 230V mains power circuit.

How do I start charging?



Check that the 230 V socket has adequate power supply for charging electric vehicles. The charging current is adapted via the charging cable's control unit to an intensity (between 6–16 A, depending on market) that is such that the 230 V socket is not overloaded.

How do I activate preconditioning?



During **Outdoor** parking the fuel-driven heater emits exhaust gases, but not for **Indoor** parking when the electrically-driven heater is activated instead. In the event of direct start of preconditioning, Volvo recommends activation via the remote control key or mobile phone.

How does the Keyless* lock system work?



The use of gloves may prevent the Keyless function in the door handles. Electromagnetic fields and screening can interfere with the Keyless function. Do not place/store the remote control key near a mobile phone or metal objects.

How do I start the engine?



After a cold start the idling speed is high irrespective of outside temperature. It is part of Volvo's efficient emissions system. During cold starting, certain diesel engines have a delayed start due to preheating. When the engine is started under normal conditions the car's electric drive motor is prioritised. The diesel engine remains switched off. However, there are situations where the diesel engine starts instead, e.g. when the temperature is too low or if the hybrid battery needs to be charged.

How does the pedestrian protection work*?



The function cannot detect all pedestrians in all situations and does not see, for example, partially obscured pedestrians, people in clothing that hides their body contour or pedestrians shorter than 80 cm. The function cannot detect all cyclists in all situations and does not see, for example, partially obscured cyclists, cyclists with concealed body contours or cyclists approaching from the side. The driver is always responsible that the vehicle is driven in a correct manner and with a safety distance adapted to the speed.

How do I adjust the steering wheel?



Adjust the steering wheel (after adjusting the seat) **before** setting off – never while driving.

How do I adjust the seat?



Adjust the driving position of the driver's seat correctly **before** setting off – never while driving. Make sure that the seat is in locked position in order to prevent personal injury in the event of heavy braking or an accident.

How do I connect to the Internet*?



Using the Internet involves transferring data (data traffic), resulting in a charge to your network operator. Contact them about the cost for data traffic. To connect via car modem, fit your personal SIM card in the holder that is fitted in the glovebox and then select the connect via Car modem option in MY CAR. To connect to the Internet, enter the SIM card's PIN code. To avoid having to enter the PIN code every time the car is started, the PIN code lock can be deactivated under the Car modem option by deselecting Lock SIM card.

How should I clean the leather upholstery*?



Some coloured clothing (e.g. jeans and suede garments) may discolour the upholstery. Never use strong solvents – they could damage the upholstery.

Where are the AUX/USB* and 12 V sockets located?



Maximum current take-off is 10 A (120 W) in each socket.