



VOLVO V70 & XC70 **QUICK GUIDE**

WEB EDITION



WELCOME TO YOUR NEW VOLVO!

Getting to know your new car is an exciting experience.

Take a look at this Quick Guide to learn some of the most common functions quickly and easily.

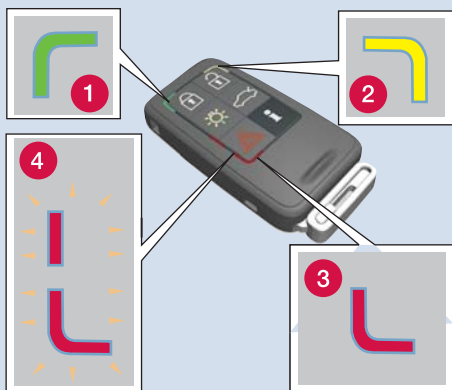
All warning texts, and other important and detailed information, are only available in the owner's manual – this folder only contains a small selection.

In addition, the owner's manual contains the latest and most current information

Options are marked with an asterisk (*).

There is further information concerning your car at www.volvocars.com

REMOTE CONTROL KEY WITH PCC* – PERSONAL CAR COMMUNICATOR



PCC*

- 1 Green light: The car is locked.
- 2 Yellow light: The car is unlocked.
- 3 Red light: The alarm has been triggered.
- 4 Flashing alternating red light: Alarm triggered less than 5 minutes ago.



Locks doors and the tailgate and activates the alarm*. The lock and interior door handles are blocked after 10-25 seconds. The doors cannot then be opened from inside.



Unlocks the doors^A and tailgate and disarms the alarm.



Unlocks the tailgate – this does not open.^B



Approach light duration. Switches on the lamps in the side mirrors*, the direction indicators and parking lamps, at the number plate, passenger compartment and floor.



Panic function. Held down for approx. 3 seconds in an emergency to trigger the alarm.



Information on the car can be obtained within a radius of 20 metres.

– Press the button and wait 7 seconds.

Pressing the button out of range shows the last status stored in the memory.

^A Automatic relocking takes place if a door/tailgate has not been opened within 2 minutes after unlocking.

^B Power tailgate opens.

KEY POSITIONS



In order to reach the following key positions without the engine starting: Do not depress the brake/clutch pedal.



Position Active functions



Remote control key not inserted – Audio system and passenger compartment lighting.



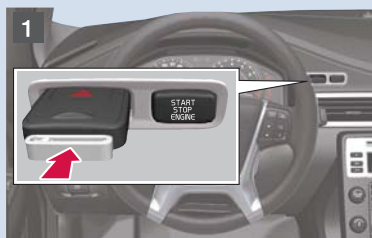
Remote control key inserted – Instrument/clock lighting, steering lock off.



Inserted key and short press on **START** – Sunroof*, power windows, fan, ECC, windscreen wipers, 12 V socket , RTI*.

To leave key mode 0/1 and thus switch of all electrical consumers: press the key to remove it from the ignition.

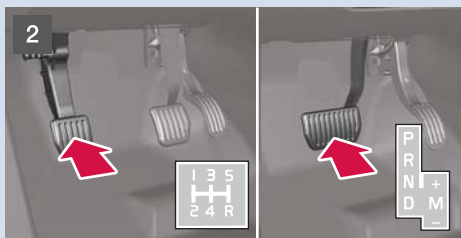
START THE ENGINE



– Insert the remote control key in the ignition switch and press gently on it – the key is drawn in.



— Briefly press the button to start the engine.



– Depress the clutch or brake pedal.

COLD START



NOTE

After a cold start the idling speed is high irrespective of outside temperature. A period of raised idling speed is part of Volvo's efficient emissions system.

SWITCH OFF THE ENGINE AND REMOVE THE REMOTE CONTROL KEY



1. Briefly press the button – the engine stops.
2. Briefly press the key – it can now be removed from the ignition switch (automatic transmission must be in **P** position).

BLIS – BLIND SPOT INFORMATION SYSTEM*



If the BLIS' indication lamp illuminates despite no vehicle being in the blind spot, the cause could be reflection from wet road surface or low sun shining into the camera for example.

In the event of a direct fault in the system the display shows the text **Blind spot syst. Service required.**

CONTROL PANEL DRIVER'S DOOR



L R Setting the door mirrors
– Select **L** (left) or **R** (right), adjust with the lever.



Retracting/extending the door mirrors*
– Press **L** and **R** simultaneously.



Manual windows.



Automatic windows.



Child safety locks*. Windows and rear doors cannot be opened from the rear seat.



- 1 Press for On/Off. Turn to adjust the volume.
- 2 Select **AM**, **FM1/FM2**, **CD** or **MODE**. With **MODE**, **AUX^A/USB** can be activated and its volume adjusted.
- 3 Press to select sound pattern e.g. **BASS**, **Dolby Pro Logic II^{*}** or **SUBWOOFER^{*}** – turn to adjust.

RADIO

- 3 Turn to select station.
- 4 Search for a station by pressing the left/right arrow.
Store the required station by holding down one of the digit buttons **0–9** on **FM1** or **FM2** until the display confirms that the station has been stored. A total of 20 stations can be stored.
- 5 Press for about 2 seconds to autostore the 10 strongest stations. The display shows **Autostoring** during the search. Select stored station with **0–9**.

^A AUX input for e.g. MP3 player (set volume to medium for optimum audio reproduction).

^B Only CD changer.

CD player

- 3 Turn to change track.
- 4 Change CD tracks with left/right arrow. Select CD^B with up/down arrow.
- 6 One short press ejects the current disc. One long press ejects all discs^B.
- 7 Select CD^B with **1–6**.

POWER OPERATED TAILGATE*



Opening

- Hold in the button for the tailgate on the lighting panel/remote control key until the tailgate starts to open.
- Or lightly press the rubberised pressure plate beneath the outside handle and raise the tailgate.

Closing

- Press the tailgate's closing button or close manually.



AUTOMATIC CONTROL

In **AUTO** mode the ECC system controls all functions automatically, making driving simpler with optimum air quality.

- 1** Turn for the individual temperature on the left/right-hand side of the passenger compartment. The display shows the selected temperature.
- 6** Press for automatic control of selected temperature and other functions.

MANUAL CONTROL

- 2** Ventilation left/right-hand seat.
- 3** Turn to change the fan speed.
- 4** Heating, left/right-hand seat.
- 5** Air distribution
- 7** Air quality system. OFF/AUT/Recirculation.
- 8** Max defroster. Directs all air towards the windscreen and side windows, with maximum air flow.
- 9** Heated rear windscreen and side mirrors. Switch off when heating is complete.
- 10** **AC** – Air conditioning On/Off. Cools the passenger compartment and demists the windows.

STORAGE SPACES, 12 V SOCKET & AUX/USB*



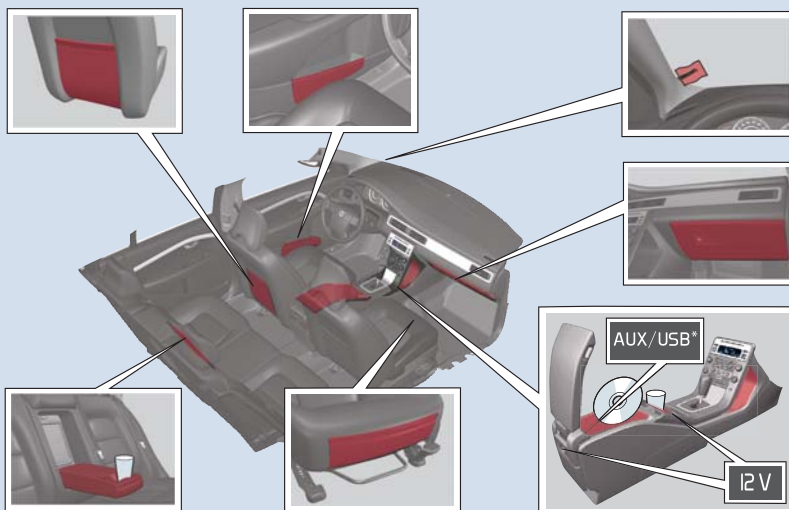
The 12 V sockets in the passenger compartment work in key position **I** or **II**. The 12 V socket* in the cargo area is always active.

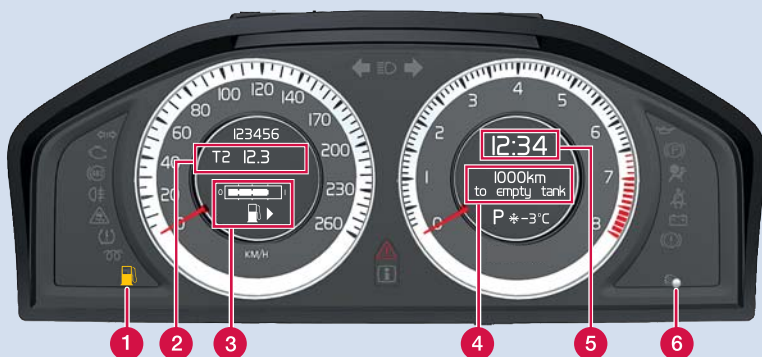
The car's audio system can playback music from an MP3 player etc. using the AUX/USB* output.



IMPORTANT

Using the 12 V socket in the cargo area when the engine is switched off could discharge the battery.





- 1 Low fuel level. When the lamp is illuminated, fill with fuel as soon as possible.
- 2 T1 & T2 – independent trip meters, which are always active.
- 3 Fuel gauge. The symbol's arrow points out the side on which the fuel cap is located.
- 4 Display, trip computer. Select function with (8).
- 5 Clock. Adjust with (6).
- 6 Turn to end position and hold to set the clock.
One short press switches between T1 & T2.
One long press resets the current meter.
- 7 Press to show/clear message.
- 8 Turn to see the trip computer's options.
- 9 One short press resets the trip computer's current function.
One long press resets all trip computer functions.



NOTE

Display text ---- km to empty tank is an estimate of the possible distance left to drive, based on earlier driving conditions.

ADJUSTING THE STEERING WHEEL



WARNING

Adjust the steering wheel before starting to drive – never do this while driving.

REDUCED ALARM LEVEL



To prevent the alarm being activated if a dog is left in a locked car, for example, or if the car is parked on a ferry or being transported by rail, the movement sensor must be disabled temporarily.

See the instruction manual, Alarm section.

HEADLAMP CONTROL



- A** Main beam flash
- B** Main/dipped beam switching and Home safe light duration.

- Display and instrument lighting.
- Front fog lamps
- Fog lamps rear (driver's side only).
- Automatic dipped beam. Main beam flash works but not fixed main beam.
- Parking lamps
- Dipped beam. Switches off when the engine is switched off. Main beam can be activated.
- Opens petrol tank cap.
- Manual headlamp levelling (automatic for Xenon lights*).
- Unlocking of tailgate.

DRIVER SUPPORT SYSTEM



To help the driver to brake in time, for example, keep a safe distance from other vehicles or maintain a good road position, the car may be fitted with a number of systems:

- Adaptive cruise control*
- Distance control*
- Collision warning with auto brake*
- Driver Alert System*.

BLUETOOTH*



1. Makes mobile phone searchable/visible.
2. Hold in the audio system's **PHONE** button.
3. Select **Add phone** from the audio system display.
4. Select the phone to be connected.
5. Input the digits shown in the audio system display using the mobile phone's keypad.

WINDSCREEN WIPERS AND RAIN SENSOR*



- 1** Rain sensor On/Off, with the lever in position **0**.
- 2** Regulates the sensor sensitivity or the intermittent delay.
- 3** Wiper, rear window – intermittent/normal.

- A** Single sweep
- 0** Off
- B** Intermittent wiper, see also (2).
- C** Normal sweep speed.
- D** High sweep speed.
- E** Washer, windscreen and headlamps.
- F** Washer, rear window.
- Illuminates when the rain sensor is active.

PARKING BRAKE



To apply

- Press the button. The warning lamp flashes until the parking brake is fully applied – after which the lamp stays on.

To disengage

1. Key position **0** or **I**.
2. Depress the brake pedal and pull the button gently.

Disengage automatically

- Drive away. (For cars with automatic transmission, the seatbelt must be buckled).

ADJUSTING THE FRONT SEAT



- 1 Lumbar support
- 2 Backrest rake.
- 3 Raise/lower seat.
- 4 Raise/lower the front of the seat cushion.
- 5 Forwards/backwards.
- 6 Lowering the passenger seat backrest.

EBA – EMERGENCY BRAKE ASSIST



Emergency Brake Assistance helps to increase brake force and so reduce braking distance. EBA is activated when the driver brakes suddenly. When EBA is activated the brake pedal depresses a little further than usual.

- Press (hold) down the brake pedal for as long as necessary – all braking ceases if the pedal is released.

CAR CARE



Handwashing is gentler on the paintwork than an automatic car wash. The paintwork is also more sensitive when it is new. For this reason, handwashing is recommended during the first few months with a new car.

Use clean water and a washing sponge. Remember that dirt and grit can scratch the paintwork.