



VOLVO S40

QUICK GUIDE



WELCOME TO THE GLOBAL FAMILY OF VOLVO OWNERS!

Getting to know your new vehicle is an exciting experience.

This Quick Guide provides a brief overview of the most common features and functions in your Volvo.

However, for the most up-to-date and detailed descriptions and instructions, as well as important warnings and other information not included in this folder, please refer to your Owner's Manual.

An asterisk (*) indicates optional equipment.

For additional information, contact Customer Service:

U.S.A.: 1-800-458-1552 www.volvocars.us

Canada: 1-800-663-8255 www.volvocanada.com

REMOTE KEY & KEY BLADE



KEY BLADE

Used to lock/unlock the glove compartment or the driver's door if the vehicle has no electrical current.



Locks the doors and trunk, and arms the alarm.



Unlocks the doors and trunk^A and disarms the alarm.



Unlocks (but does not open) the trunk.



Approach lighting illuminates lights in door mirrors, cabin, footwells, license plates. Turn signals and parking lights illuminate.



“Panic” alarm.
– Press and hold to sound the alarm.
Turn off alarm with unlock button.

^A Automatic relock occurs if no door/trunk is opened within 2 minutes after unlock.

AUTOSTART

Depress the clutch and/or brake pedal. Turn the key/keyless drive start control to position **III** and release it. The engine will start automatically.



NOTE

After cold starts, your engine will idle at a higher speed for a short time.

SETTING THE CLOCK



1. Press the MENU button on the center console control panel.
2. Select **Clock adjust**.
3. Press ENTER
4. Use the left/right arrow keys on the navigation control to highlight a number in the clock.
5. Set the time by using the number keys or with the up/down arrow keys.
6. Press ENTER to save the change and exit the menu.

TURN SIGNALS



- A** Lane-change sequence, three flashes.
B Full turn sequence.

STEERING WHEEL ADJUSTMENT



WARNING

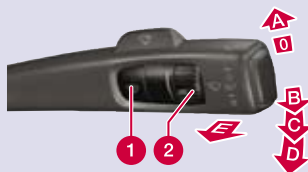
Never adjust the steering wheel while driving.

LIGHTING PANEL



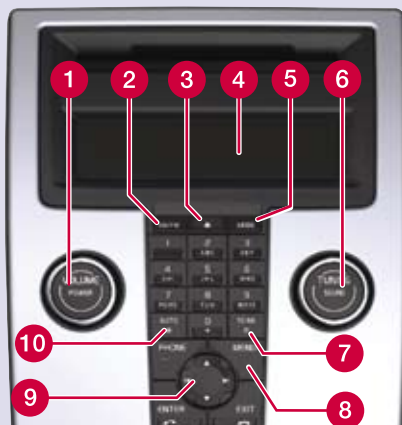
- 0** Automatic headlights. High beam flash only.
- ≡≡** Parking lights.
- ☰☷** Headlights: turn off when ignition is switched off, high/low beams.
- ☷☷** Active Bending Lights*, headlight beams follow movements of the steering wheel.
- ☼** Display & instrument panel lighting.
- ☰☷** Front fog lights*.
- ☷** Open the fuel filler door.
- ☷☷** Rear fog light (driver's side only).
- A** High beam flash.
- B** Toggle between high/low beams, home safe lighting.

WIPERS AND RAIN SENSOR*



- 1** Rain sensor **On/Off** with the lever in the **0** position.
- 2** Turn to adjust intermittent wiper speed or rain sensor sensitivity where applicable.

- A** Single wiper sweep.
- 0** Off
- E** Intermittent wipers. Turn (2) to adjust interval.
- C** Normal wiper speed.
- D** High wiper speed.
- E** Windshield and headlight washer.
- ☷** Displayed when the rain sensor is active.



- 1 Press to turn on/off.
Turn to adjust volume.
- 2 **FM1, FM2** or **AM** radio.
- 4 **Display**
- 5 **MODE, CD, Sirius satellite radio*, AUX/USB^A**
- 6 **Sound** settings. Press to select e.g., **BASS, TREBLE**, etc.
Turn to adjust.
- 8 **MENU, AUX**, volume and advanced sound settings.

HD RADIO

HD radio reception is subject to coverage limitations. See your Owner's Manual for details.

^A **AUX/USB** sockets for e.g., an mp3 player. Set the device's volume to medium for best sound quality. An iPod® connected to the USB socket will also be charged.

RADIO

- 6 **Turn** to select a radio station.
- 7 **Search** for the next strong station.
- 9 **Search** for stations with left/right arrows. Store up to 20 stations by pressing and holding one of the preset buttons **0–9** in **FM1** and **0–9** in **FM2**, until the stored station is confirmed in the display.
- 10 **Autostore** stations by pressing for 2 seconds. **AUTOSTORE** is displayed during the search. The 10 strongest stations are stored. Press **0–9** to select a station.

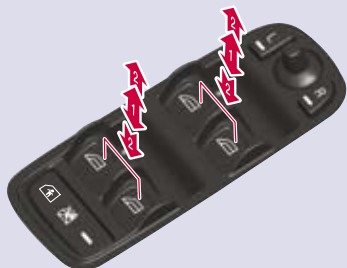
CD PLAYER

- 3 **Press** to eject a CD.
- 6 **Turn** to change tracks.
- 9 **Change** tracks with left/right arrows.

BLUETOOTH®

1. Make the cell phone searchable/visible.
2. Press the **PHONE** button on the audio system control panel briefly.
3. Select "Add phone" in the audio system display.
4. Select the cell phone to be connected.
5. Enter the numbers shown in the audio system display using the cell phone's keypad.

DRIVER'S DOOR CONTROL PANEL



- | | |
|------------|--|
| L R | Adjusting the door mirrors. Select L or R . Adjust with the control. |
| 1 ➔ | Open/close a window partially |
| 2 ➔ | Open/close a window fully |
| 4 | Lockout switch for rear windows and doors*, child safety locks. |



AUTOMATIC CONTROL

In **AUTO** mode, ECC controls all functions automatically and makes driving more pleasant with optimal air quality.

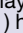
- 1 Press AUTO** to maintain automatic cabin temperature, balanced airflow and other settings.
- 7 Press** to individually adjust the left (L) or right (R) side.
Turn the dial to the desired temperature, which is shown in the display.

MANUAL CONTROL

- 1 Blower speed.**
- 2 Max. defroster.** Directs maximum air flow to the windshield and front side windows.
- 3 Recirculation**
- 4 Heated rear window and door mirrors.**
- 5 Air distribution.**
- 6 Air conditioning Off/On** to cool the cabin and defog the windows.

TIRE PRESSURE MONITORING SYSTEM (TPMS)



When a low tire pressure warning message (**LOW TIRE PRESS. CHECK TIRES** or **VERY LOW TIRE PRESSURE**) has been displayed and the tire pressure warning light () has illuminated, one or more tires has low inflation pressure.

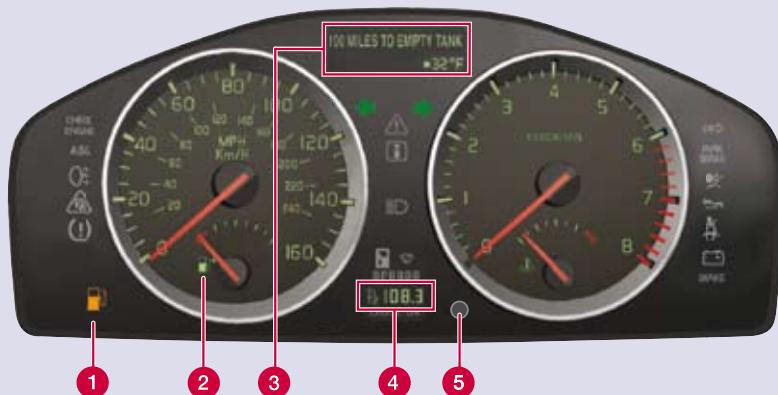
Check the inflation pressure of all four tires with a tire pressure gauge as soon as possible and pump the tire(s) with low pressure to the recommended inflation pressure.

Refer to the inflation pressure tables in the chapter "Wheels and tires" in the Owner's Manual.

CD STORAGE



The deep center storage compartment has room for 10 CD jewel cases. These cases must be inserted with their spines upward in order to allow room for 10 CDs.



- 1 Low fuel level indicator**
When the symbol illuminates, refuel as soon as possible.
- 2 Fuel gauge**
The fuel filler door is on the right, as indicated by the arrow.
- 3 Information display** (trip computer information, messages, clock and ambient temperature).
- 4 The trip odometer** display shows two separate trip odometers, T1 & T2.
- 5 A short press** toggles between T1 & T2. **A long press** resets the displayed odometer.



- 6 Press** to display or erase a message.
- 7 Turn** to show trip computer information alternatives
- 8 A short press** resets current function. **A long press** resets all functions.

NOTE

The display text **MILES TO EMPTY TANK** is an approximation, based on recent average fuel consumption.

INDICATOR AND WARNING LIGHTS



	See the information in the display.		ABS warning light. Stop safely. Restart the engine ^A .
	Stop safely and take the action shown in the display.		Brake failure warning light, stop safely. Check brake fluid level ^B .
	Low oil pressure, stop safely and check the oil level ^B .		DSTC stability system, flashes when the system is working.

^A. Contact a Volvo retailer if the symbol stays on after the engine has been restarted.

^B. Have the vehicle towed if the symbol remains illuminated.

REFUELING



1. Press this button to open the fuel filler door.
2. Hang the fuel filler cap on the hook while refueling.

CAR CARE



Hand washing is gentler on the paint than an automatic car wash. Since the paint on a new vehicle may take several months to harden completely, we recommend washing the vehicle by hand during this period. Use clean water, a suitable car washing detergent and a sponge. Keep in mind that dirt or grit on the sponge can scratch the paint.

EMERGENCY BRAKE ASSIST (EBA)



EBA is designed to provide full brake effect immediately in the event of sudden, hard braking. When EBA is activated, the brake pedal will go down more than usual.

- Press and hold the brake pedal for as long as necessary – there will be no braking effect if the pedal is released.

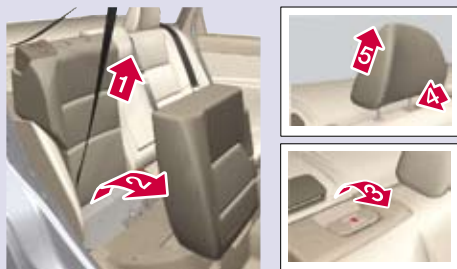
BLIND SPOT INFORMATION SYSTEM (BLIS)*



If the BLIS indicator lights illuminate occasionally even when there are no other vehicles in the blind area, this may be caused by light reflected from a wet road surface, the vehicle's own shadow against a large, light, smooth surface, or sunlight directly in the camera when the sun is low on the horizon.

In the event of a fault, **BLIND SPOT SYST. SERVICE REQUIRED** will be displayed. See the Owner's Manual for other BLIS-related messages.

FOLDING THE REAR SEAT BACKREST



- 1 Hang the seat belt in the jacket holder.
- 2 Fold up the seat cushion.
- 3 Release the catch and fold the backrest down partially.
- 4 Press the catch at the base of the head restraint and remove the head restraint.
- 5 Remove the head restraint.



- 6 Place the head restraint in the plastic tubes, which are now accessible on the underside of the seat cushions.
- 7 Fold the backrest down completely.

ADJUSTING THE FRONT SEAT



- 1 Lumbar support.
- 2 Head restraint height adjustment.
- 3 Backrest tilt.
- 4 Raise/lower the seat.
- 5 Raise/lower the front edge of the seat cushion.
- 6 Forward/rearward.

GROCERY BAG HOLDER*



STORAGE SPACES, 12-VOLT SOCKETS & AUX/USB* CONNECTOR



The 12-volt sockets in the cabin function in ignition positions **I** or **II**.
The 12-volt socket* in the trunk always functions.

AUX/USB* can be used to connect e.g., an mp3 player to the vehicle's audio system.

! CAUTION

Using the optional 12-volt socket in the trunk with the engine switched off will drain the battery.

