



## VOLVO V70 & XC70

# QUICK GUIDE



## WELCOME TO YOUR NEW VOLVO!

Getting to know your car is an exciting experience.

After looking through this Quick Guide you'll like your new Volvo even more.

You can find detailed information in the Owner's Manual.

Warning texts and other important information are only available in the Owner's Manual, not in this folder. The Owner's Manual contains the most up-to-date information.

Options are marked with an asterisk (\*).



**Locks doors** and tailgate and arms the alarm<sup>1</sup>.



**Unlocks doors** and tailgate and disarms the alarm<sup>1</sup>.



**Unlocks tailgate.**



**Lighting is switched on.** Door mirror lighting, interior lighting, step lighting, number plate lighting, direction indicators (on) and parking lamps are activated.



**"Panic" button.** Press and hold for approx. 3 seconds in an emergency to trigger the alarm.

<sup>1</sup> Automatic relocking takes place if a door/tailgate is not opened within 2 minutes after unlocking.

## START

1



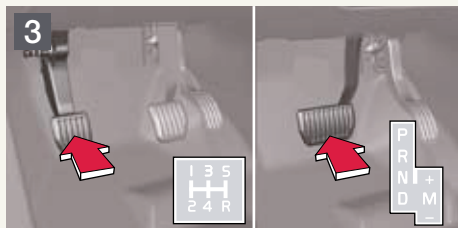
**Insert the remote control into the ignition switch.**

2



**Press gently on the remote control.** The remote control is then pulled into the correct position.

3



**Depress the clutch or brake pedal.**

4



**Press the START/STOP button** to start the engine<sup>2</sup>.

<sup>2</sup> The idling speed may be slightly higher for a short time during cold starting.

## SWITCH OFF THE ENGINE AND REMOVE THE REMOTE CONTROL

1

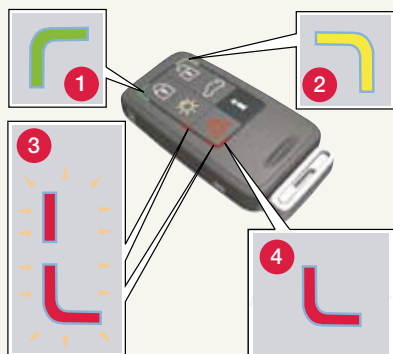


**Park the car and press the START/STOP button** to switch off the engine.

2



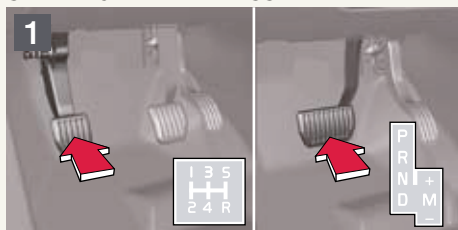
**Press on the remote control.** The remote control is then ejected. The automatic transmission must be in P position.



- 1 Green light:** The car is locked.
- 2 Yellow light:** The car is unlocked.
- 3 Flashing alternating red light:** Someone may be inside the car.
- 4 Red light:** The alarm has been armed.

**i Information** is retrieved from the car when it is within range. Press the button and wait for 5 seconds. If the button is pressed when the car is out of range then the PCC shows whether the car is locked or unlocked using the memory function.

## STARTING WITH KEYLESS DRIVE



Get into the car with the PCC in your pocket for example. **Depress the clutch or brake pedal.**



**Press the START/STOP button** to start the engine<sup>1</sup>.

<sup>1</sup> The idling speed may be slightly higher for a short time during cold starting.

## SWITCHING OFF THE ENGINE



Park the car and press the START/STOP button to switch off the engine.



### IMPORTANT

With keyless drive the PCC only needs to be inside the car. Keep it in your pocket for example when you go to and from the car and while driving.

The car is unlocked automatically when the door is opened.

When parking the car after driving you only need to press the button on the outside of the door to lock the car.

## LEATHER CARE



Regular cleaning is required to preserve the properties and appearance of the leather. Treat the leather upholstery with Volvo's leather care kit, once to four times per year. The leather care kit is available at your Volvo dealer.

## BLIS – BLIND SPOT INFORMATION SYSTEM\*



If the BLIS' indicator lamp illuminates despite there being no vehicle within the blind spot, the cause could be for example, reflection from shiny wet road surface or low sun in the camera. In the event of a direct fault in the system the display shows the text **Blind spot syst. Service required**



## 1 POWER/VOLUME

**Press for ON/OFF**

**Turn to adjust the volume**

Radio, TP, Handsfree\* and RTI volume are stored individually for the next time they are used.

## 2 Select AM, FM1, FM2, CD or MODE.

Use MODE to activate AUX<sup>1</sup> and to adjust the AUX audio source volume.

## 3 Set the sound pattern

**Press** the button to select BASS, TREBLE, FADER, BALANCE, Dolby Pro Logic II\* or SUBWOOFER\*.

**Turn** the control to adjust.

<sup>1</sup> AUX input for e.g. MP3 player (set volume at medium for optimum audio reproduction).

# RADIO

## 3 Turn to select radio station

**4 Search station** with left/right arrow. Store up to 20 stations by holding in 0–9 on FM1 and 0–9 on FM2. When a station has been stored it is confirmed in the display.

## 5 Autostore the 10 strongest stations

**Press in AUTO** for approx. 2 seconds.

Autostoring is shown in the display for as long as the search continues.

**Select** from 0–9 to playback one of the stored radio stations.

# CD

**4 Change CD track** using Left/Right arrow or turn (3).

**Select CD disc\*** using Up/Down arrow.

## 6 CD eject


**Press** to eject current CD disc.

**Keep the button depressed** to eject all CD discs in the CD changer\*.

**7 CD changer\***. Select CD disc 1–6.

# POWER OPERATED TAILGATE\*

## Opening

 Depress the button on the panel for headlamp control or the remote control key for a short time. The tailgate can also be opened by pulling once on its handle.

## Closing

Depress the closing button on the tailgate or close manually.





### AUTOMATIC CONTROL

In **AUTO** mode the ECC system controls all functions automatically making driving simpler with optimum air quality.

#### 1 Temperature

**Turn** the controls to select the required temperature. The set temperature is shown in the display.

#### 2 Press **AUTO** for automatic control of temperature and other functions.

### MANUAL CONTROL



**Fan speed**



**Air distribution**



**Defroster** to quickly remove misting from the windscreen and side windows.



**Air quality system.** OFF/AUT/Recirculation.



**AC Air conditioning ON/OFF**

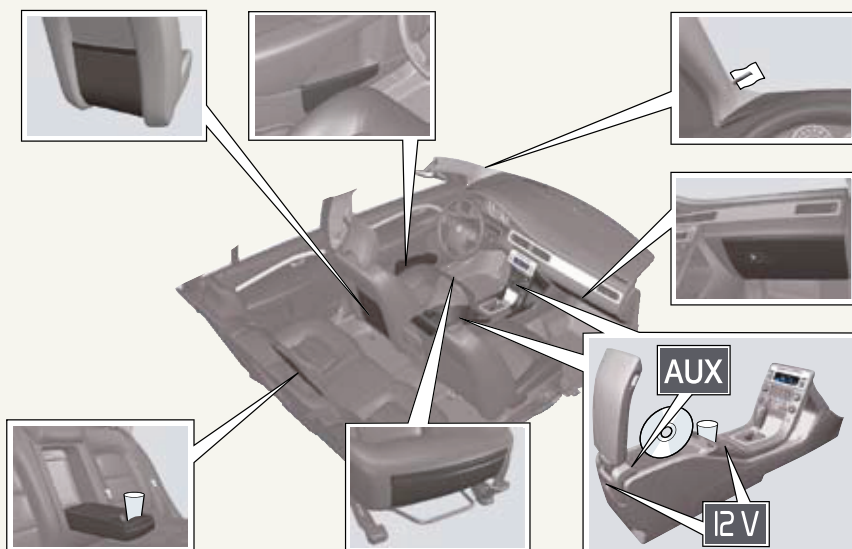
### STORAGE SPACES, 12 V SOCKET AND AUX

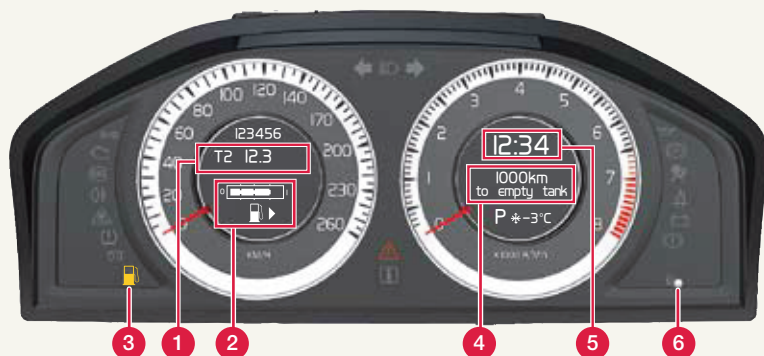
The 12 V sockets in the centre console front/rear work in ignition position I or higher. The 12 V socket on the right-hand side of the cargo area is always active.



#### IMPORTANT

Using the 12 V socket in the cargo area could discharge the battery.





### 1 Trip meter

The car is equipped with two independent trip meters, T1 and T2, which are always on. **Press (6)** for 2 seconds to reset the trip meter shown in the display.

**Press (6) quickly** to shift between T1 and T2.

### 2 Fuel gauge

The arrow shows which side the fuel filler cap is on.

### 3 Low fuel level

The symbol illuminates when 8 litres of fuel remain in the tank (diesel cars: 7 litres).

### 4 Km to empty tank

Set the trip computer thumbwheel (8) to display the calculated range to empty tank.



### IMPORTANT

Km to empty tank displays a calculated potential range to empty tank. The calculation is based on earlier driving style, hills, type of traffic etc.



### 5 Clock

Turn the control (6) clockwise or anticlockwise to set the clock.

### 6 Multifunction control

**Press** to reset or switch between trip meters T1 and T2.

**Turn** to adjust the clock.

### 7 READ

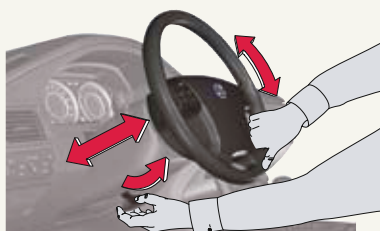
Press to read messages in the display. Press again to acknowledge a message.

### 8 Trip computer

Set the required function by scrolling with the thumbwheel.

### 9 Resets all functions

## ADJUSTING THE STEERING WHEEL



**WARNING!** Adjust the steering wheel before setting off, never while driving.

## REFUELLING



**Press the button to open the fuel filler flap.**

## HEADLAMP CONTROL



**Main beam flash.**

Switch between **main/dipped beam**.



**Display and instrument panel lighting**



**Fog lamps, front**



**Rear fog lamp**



**Automatic dipped beam.** Main beam flash works but not fixed main beam.



**Parking lamps**



**Dipped beam.** Dipped beam switches off when the ignition is switched off. Main beam can be activated with the lever.



**Headlamp levelling, dipped beam.** Automatic function for Bi-Xenon lights\*.

## CONTROL PANEL IN DRIVER'S DOOR



**Locking/unlocking of all doors.**



**Retracting the door mirrors\*** takes place by means of **L** and **R** simultaneously.



**Door mirror controls**



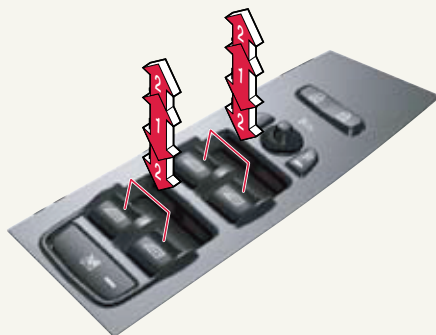
**Manual windows**



**Automatic windows**



**Locking the rear windows and doors\*** (Child safety locks)



## RAIN SENSOR\* AND WINDSCREEN WIPERS



### RAIN SENSOR

- 1** Press to activate the rain sensor when the lever is in position 0.
- 2** Adjust **rain sensor sensitivity** by turning the thumbwheel.
- 3** **Rear window wiper** intermittent/normal.



**The symbol** indicates that the rain sensor is **ON**.



**Single sweep, windscreen wipers**



**Interval wiping.** Turn the thumbwheel (3) to adjust the wiper interval.



**Normal speed**



**High speed**



**Windscreen and headlamp washing**



**Rear window washer**



## IGNITION POSITIONS (MODE 0, I)



The clutch/brake pedal must **not** be depressed.

### REMOTE CONTROL

#### Mode 0



#### Mode I



### PCC & KEYLESS DRIVE

#### Mode I



Audio system/interior lighting works independently of ignition position.

- 0** Instrument/clock lighting, steering lock unlocks.
- I** Power sunroof, power window lifts, fan, ECC, windscreen wipers, 12 V sockets in centre console, RTI.

## ADJUSTING THE FRONT SEAT




- 1** Lumber support
- 2** Backrest rake
- 3** Raise/lower seat
- 4** Seat cushion front edge raise/lower
- 5** Forwards/backwards

## ELECTRIC PARKING BRAKE, PPB



### To apply

- 1** Press the button.
-  The lamp flashes until the parking brake is fully applied, after which the lamp illuminates.

### To disengage

Ignition position **0** or higher.  
Depress the clutch or brake pedal.

- 2** Pull out the button.

### Disengage automatically

Engage a gear and drive away.  
(In cars with automatic transmission the driver must be wearing the seatbelt.)



Engage a gear and drive away. The parking brake disengages automatically.