



SENSUS INFOTAINMENT

VÄLKOMMEN!

We hope you will enjoy many years of driving pleasure in your Volvo. The car has been designed for the safety and comfort of you and your passengers. Volvo is one of the world's safest passenger vehicles. Your Volvo is also designed to meet applicable safety and environmental requirements.

In order to increase your enjoyment of your Volvo, we recommend that you read this supplement as well as the instructions and maintenance information in the owner's manual. The owner's manual is also available as a mobile app (Volvo Manual) and on the Volvo Cars support site (support.volvocars.com).

TABLE OF CONTENTS

INTRODUCTION

Introduction	6
Volvo Sensus	6
Volvo Cars support site	7

MY CAR

MY CAR	10
MY CAR - search paths	11
MY CAR - menu options	11
MY CAR - car settings	13
MY CAR - driving support system	14
MY CAR - System options	16
MY CAR - Climate settings	17
MY CAR Information	17

AUDIO AND MEDIA

Audio and media	20
Audio and media - overview	20
Audio and media - operating the system	21
Favourites	25
Save as favourite	25
Audio and media - audio settings	26
Audio and media - general audio settings	26
Audio and media - advanced audio settings	27
Setting the equaliser	27
Setting the audio profile	27
Setting the audio volume and automatic volume control	28
Radio	28
Radio tuning	29
Automatic radio tuning	29
Radio station list*	29
Manual radio tuning	30
Radio stations as presets	31
RDS functions	32
Alarms in the event of accidents and disasters	32
Traffic information (TP)	33
Enhanced Other Networks (EON)	33
News broadcasts	33

Radio programme types (PTY)	34	Playback and navigation of DVD* video discs	42	Making and receiving calls*	55
Volume control for interrupting radio programme types (PTY)	34	Camera angle for playback of DVD* video discs	43	Bluetooth® handsfree phone* - audio settings	56
Radio text	34	DivX® Video On Demand*	43	Bluetooth®* version information	56
Automatic radio frequency update (AF)	35	Picture settings*	44	Phone book*	57
Regional radio programmes (REG)	35	Media player - compatible file formats	44	Phone book* - quick search for contacts	58
Resetting RDS functions	35	External audio source via AUX/USB* input	45	Phone book* - character table keypad in centre console	58
Digital radio (DAB)*	36	Connecting an external audio source via AUX/USB* input	46	Phone book* - searching for contacts	59
Storing channel groups (Ensemble learn)	36	Playback and navigation of external audio source*	47	Phone book* - new contact	60
Navigation in channel group list (Ensemble)	37	Setting the audio volume for external audio source	48	Phone book* - speed dial numbers	61
DAB to DAB link	37	Media Bluetooth®*	49	Phone book* - receiving a vCard	61
Digital radio (DAB)* - wavelength	37	Connecting and disconnecting a Bluetooth® device*	50	Phone book* - memory status	61
Digital radio (DAB)* - subchannel	38	Registering a Bluetooth® device*	50	Phone book* - clearing	62
Digital radio (DAB)* - resetting	38	Automatic connection of Bluetooth® device*	51	Remote control*	62
Media player	38	Changing to another Bluetooth® device*	52	Remote control* - functions	63
CD/DVD*	39	Disconnecting the Bluetooth® device*	52	Remote control* - battery replacement	64
Playback and navigation of CD/DVD* disc	39	Removing a Bluetooth® device*	53	Audio and media - menu overview	65
Playback and navigation of burned discs with audio/video files*	40	Bluetooth® handsfree phone*	53	Menu overview - AM	65
Fast forward/reverse	41	Bluetooth® handsfree phone* - overview	54	Menu overview - FM	65
Scan disc track or audio file	41			Menu overview - Digital radio (DAB)*	66
Random selection of disc track or audio file	42			Menu overview - CD Audio	67
				Menu overview - CD/DVD* Data	67
				Menu overview - DVD* Video	68

Menu overview - iPod®*	68
Menu overview - USB*	69
Menu overview - Media Bluetooth®*	69
Menu overview - AUX	70
Menu overview - Bluetooth® handsfree*	70
Licenses	71
Type approval	73

ALPHABETICAL INDEX

Alphabetical Index	83
--------------------	----

INTRODUCTION

Introduction

This supplement is a supplement to the normal owner's manual for the car.

In the event of uncertainty regarding any of the car's functions, consult the owner's manual in the first instance. For answers to additional questions it is recommended to contact a dealer or a representative of Volvo Car Corporation.

The specifications, design features and illustrations in this supplement are not binding. We reserve the right to make modifications without prior notice.

© Volvo Car Corporation

Options/accessories

All types of option/accessory are marked with an asterisk: *.

In addition to standard equipment, the supplement also describes options (factory fitted equipment) and certain accessories (retrofitted extra equipment).

The equipment described in the supplement is not available in all cars - they have different equipment depending on adaptations for the needs of different markets and national or local laws and regulations.

In the event of uncertainty over what is standard or an option/accessory, contact a Volvo dealer.

Owner's Manual in mobile devices



i NOTE

The Owner's manual is available for download as a mobile application (applies for certain car models and mobile devices), see www.volvocars.com.

The mobile application also includes video and searchable content and easy navigation between different sections.

Volvo Sensus

Volvo Sensus is the heart of the personal Volvo experience and connects you with the car and outside world. Sensus provides information, entertainment and assistance when it is needed. Sensus consists of intuitive functions that both enhance the car journey and simplifies ownership of the car.

The word "SENSUS" is displayed in a large, bold, italicized, sans-serif font. The letters are black and set against a white background. The font has a modern, slightly slanted appearance. A small vertical text '0049168' is visible on the right side of the box.

An intuitive navigation structure makes it possible to receive relevant support, information and entertainment when it is necessary, without distracting the driver.

Sensus covers all the car's solutions that enable connection* to the outside world and provides you with intuitive control over all the car's capabilities.

Volvo Sensus combines and presents many functions in several of the car's systems on the centre console's screen. With Volvo Sensus the car can be personalised by means of an intuitive user

interface. Settings can be made in Car settings, Audio and media, Climate control, etc.

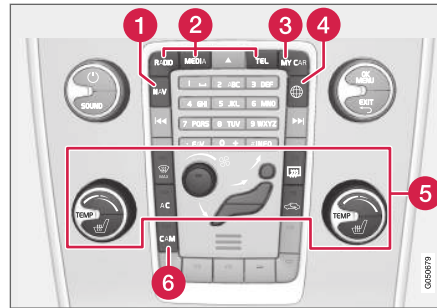
With the centre console buttons and controls or the steering wheel's right-hand keypad* functions can be activated or deactivated and many different settings can be made.

With a press on **MY CAR** all settings related to the driving and control of the car are presented, such as City Safety, locks and alarm, automatic fan speed, setting the clock, etc.

With a press on the respective function **RADIO**, **MEDIA**, **TEL***, **NAV*** and **CAM**¹ other sources, systems and functions can be activated, e.g. AM, FM, CD, DVD*, TV*, Bluetooth®*, navigation* and park assist camera*.

For more information about all functions/ systems, see the relevant section in the owner's manual or its supplement.

Overview



Control panel in centre console. The figure is schematic - the number of functions and layout of the buttons both vary, depending on the equipment selected and the market.

- 1 Navigation* - **NAV**, see separate supplement (Sensus Navigation).
- 2 Audio and media - **RADIO**, **MEDIA**, **TEL***, see the relevant section in this supplement.
- 3 Function settings - **MY CAR**, see MY CAR (p. 10).
- 4 Internet-connected car - **NAV***, see the respective section in this supplement².
- 5 Climate control system, see the Owner's Manual.
- 6 Park assist camera - **CAM**¹, see the Owner's Manual.

Volvo Cars support site

More information on your car is available on the Volvo Cars website and support site.

Support on the Internet

Go to support.volvocars.com or use the QR code below to visit the page. The support page is available for most markets.



QR code that leads to the support page.

The information on the support page is searchable and can also be subdivided into different categories. Available here is support for options related to e.g. Internet connected services and functions, Volvo On Call*, the navigation system* and apps. Video and step-by-step instructions explain different procedures, e.g. how the car is connected to the Internet via a mobile phone.

¹ Applies to certain car models.

² Information only available if the car is equipped with this function.

◀ **Downloadable information from the support page**

Maps

For cars equipped with Sensus Navigation*, there is the facility to download maps from the support page.

Apps

For selected Volvo models from model year 2014 and 2015, the owner's manual is available in the form of an app. The Volvo On Call* app can also be accessed from here.

Owner's manuals from previous model years

Owner's manuals from previous model years are available here in PDF format. The Quick Guide and supplement can also be accessed from the support page. Select car model and model year in order to download the publication required.

Contact

On the support page there is contact information for customer support and the nearest Volvo dealer.

Log in to the Volvo Cars website

Create a personal Volvo ID and log in to www.volvocars.com. Once you are logged in you can get an overview of service, agreements and warranties, amongst other things. There is also information here about accessories and software adapted for your car model.

MY CAR

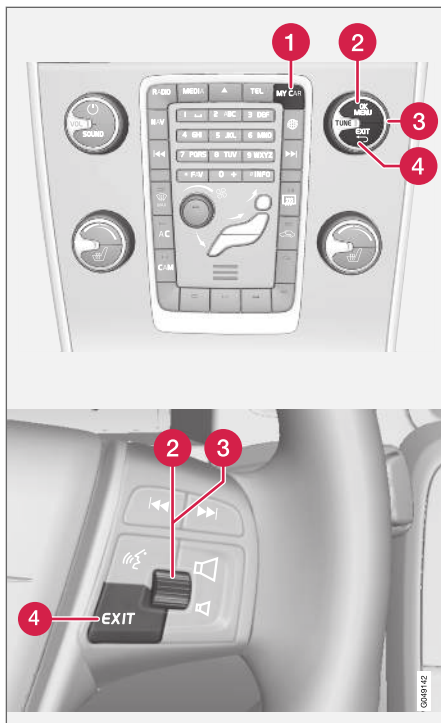
MY CAR

MY CAR is a menu source that handles many of the car's functions, e.g. City Safety™, locks and alarm, automatic fan speed, setting the clock, etc.

Certain functions are standard, others are optional - the range also varies depending on the market.

Operation

Navigation in the menus is carried out using buttons in the centre console or with the steering wheel's right-hand keypad*.



Control panel in centre console and steering wheel keypad. The figure is schematic - the number of functions

and layout of the buttons both vary, depending on the equipment selected and the market.

- 1 **MY CAR** - opens the menu system MY CAR.
- 2 **OK/MENU** - press the button in the centre console or the thumbwheel on the steering wheel to select/tick in the highlighted menu option or store the selected function in the memory.
- 3 **TUNE** - turn the knob in the centre console or the thumbwheel on the steering wheel to scroll up/down through the menu options.
- 4 **EXIT**

EXIT functions

Depending on the function the cursor is on when **EXIT** is depressed briefly, and on which menu level, one of the following may occur:

- phone call is rejected
- current function is interrupted
- input characters are deleted
- most recent selections are undone
- leads up in the menu system.

A long press on **EXIT** leads to the normal view for MY CAR or if you are in the normal view, to the highest menu level (main source menu).

MY CAR - search paths

MY CAR is a menu source that handles many of the car's functions, e.g. setting the clock, door mirrors and locks.

Current menu level is shown at the top right of the centre console's screen. The search paths to the menu system's functions are specified on the form:

Settings → Car settings → Lock settings → Doors unlock → Driver door, then all.

The following is an example of how a function can be accessed and adjusted using the steering wheel keypad:

1. Press the centre console button **MY CAR**.
2. Scroll to the desired menu, e.g. **Settings**, with the thumbwheel and then **press** the thumbwheel - a submenu opens.
3. Scroll to the desired menu, e.g. **Car settings** and press the thumbwheel - a submenu opens.
4. Scroll to **Lock settings** and press the thumbwheel - a new submenu opens.
5. Scroll to **Doors unlock** and press the thumbwheel - a submenu of selectable functions opens.

6. Scroll between the options **All doors** and **Driver door, then all** and press the thumbwheel - the option is selected.
7. Exit the programming by backing out of the menus incrementally with short presses on **EXIT** or with one long press.

The procedure is the same for the centre console controls (p. 10): **OK/MENU, EXIT** and the **TUNE** knob.

Related information

- MY CAR (p. 10)
- MY CAR - menu options (p. 11)

MY CAR - menu options

MY CAR is a menu source where many of the car's functions can be handled, e.g. setting the clock, door mirrors and locks.

The following options are available in menu source **MY CAR**:

- **My S60¹**
- **Trip statistics²**
- **DRIVE³/Hybrid²**
- **Support systems**
- **Settings**

My S60¹

MY CAR → My S60¹

The screen shows a grouping of all of the car's driver support systems - these can be activated or deactivated here.

Trip statistics²

MY CAR → Trip statistics

The screen shows the history as a bar chart with average consumption of electricity and fuel.

DRIVE³

MY CAR → DRIVE

¹ Depending on car model.

² Applies to the V60 Twin Engine and S60L Twin Engine.

³ Applies to the V40, V40 Cross Country, S60, S60L, V60, V60 Cross Country, XC60.

MY CAR

◀ Parts of the Volvo DRIVE concept are described here, among other things. Select from among the following headings:

- **Start/Stop**

Here there is information about the Start/Stop function.

- **Eco driving guide**

Tips, advice and a description of what it means to drive economically can be found here.

Hybrid²

MY CAR → Hybrid

Information on the car's drive system is found here. Select from among the following headings:

- **Power flow**

The screen shows whether the motor or engine is driving the car and how the motive force is flowing.

- **Driving modes**

The car's different drive modes are explained.

- **Eco driving guide**

Tips, advice and a description of what it means to drive economically can be found here.

Driver support system

MY CAR → Support systems

The screen shows a summary of the current status of the car's driver support systems.

Settings

MY CAR → Settings

The menus are structured as follows:

Menu level 1**Menu level 2**

Menu level 3

Menu level 4

Shown here are the 4 first menu levels under **Settings**. Certain functions are standard, others are optional - the range also varies depending on the market.

When selecting whether a function should be activated/**On** or deactivated/**Off** a square is displayed:

On: Selected square.

Off: Empty square.

- Select **On/Off** with **OK** - then back out of the menu with **EXIT**.

Menus under settings

- **Car settings**, see MY CAR - car settings (p. 13)
- **Driver support systems**, see MY CAR - driving support system (p. 14)
- **System options**, see MY CAR - System options (p. 16)
- **Audio settings**, see Audio and media - general audio settings (p. 26)
- **Climate settings**, see MY CAR - Climate settings (p. 17)
- **Favourites (FAV)** - link a normally used function in MY CAR to **FAV** button, see Favourites (p. 25)
- **Volvo On Call**, described in a separate manual.
- **Information**, see MY CAR Information (p. 17)

Related information

- MY CAR (p. 10)
- MY CAR - search paths (p. 11)

² Applies to the V60 Twin Engine and S60L Twin Engine.

MY CAR - car settings

Car settings menu option in the MY CAR menu source handles many of the car's functions, e.g. Car key memory and Lock settings for doors.

Car settings
Car key memory
On
Off
Lock settings
Automatic door locking
On
Off
Doors unlock
All doors
Driver door, then all
Keyless entry
All doors
Any door
Doors on same side
Both front doors

Audible confirmation
On
Off
Reduced Guard
Activate once
Ask when exiting
Side mirror settings
Fold mirrors
Tilt left mirror
Tilt right mirror
Light settings
Interior light
Floor lights
Ambient light
Ambient light colours
Door lock confirmation light
On
Off

Unlock confirmation light
On
Off
Approach light duration
Off
30 sec
60 sec
90 sec
Home safe light duration
Off
30 sec
60 sec
90 sec
Triple indicator
On
Off



Temporary LH traffic

On

Off

or

Temporary RH traffic

On

Off

Active bending lights

On

Off

Auxiliary lights

On

Off

Tyre pressure system

Warns if tyre pressure is too low

Calibrate tyre pressure

Tyre pressure system

Calibrate tyre pressure

Steering wheel force

Low

Medium

High

Speed in infotainment display

On

Off

Reset car settings

All menus in **Car settings** are given original factory settings.

Related information

- MY CAR (p. 10)
- MY CAR - menu options (p. 11)

MY CAR - driving support system

Driving support systems menu option in the MY CAR menu source handles functions such as e.g. Collision warning system and Lane keeping aid.

Driver support systems

Collision Warning

On

Off

Warning distance

Long

Normal

Short

Warning sound

On

Off

Lane Departure Warning

Lane Departure Warning

On

Off

On at start-up

On

Off

Increased sensitivity

On

Off

Lane Keeping Aid

Lane Keeping Aid

On

Off

Assistance alternatives

Full function

Vibration only

Steering assist only

Road Sign Information

On

Off

Speed alert

On

Off

DSTC

On

Off

City Safety

On

Off

BLIS

On

Off

Distance Alert

On

Off

Driver Alert

On

Off

Related information

- MY CAR (p. 10)
- MY CAR - menu options (p. 11)

MY CAR - System options

The system settings menu option in the MY CAR menu source handles functions such as e.g. time and languages.

System options
Time The combined instrument panel's clock is adjusted here.
Time format 12 h 24 h
Screen saver On Off The display screen's current content fades out after a period of inactivity and is replaced by a blank screen if this option is selected. The current screen content returns if any of the display screen's buttons or controls are actuated.
Language Selects language for menu texts.

Show help text On Off Explanatory text for the display screen's current content is shown with this option selected.
Distance and fuel units MPG (UK) MPG (US) km/l l/100km
Temperature unit Celsius Fahrenheit Selects the unit for the display of outside temperature and setting of the climate control system.
Volume levels Front park assist volume Rear park assist volume Phone ringing volume
Reset system options All menus in System options are given original factory settings.

Related information

- MY CAR (p. 10)
- MY CAR - menu options (p. 11)

MY CAR - Climate settings

Climate settings menu option in the MY CAR menu source handles functions such as e.g. fan adjustment and recirculation.

Climate settings

Automatic blower adjustment

- Normal
- High
- Low

Recirculation timer

- On
- Off

Automatic rear defroster

- On
- Off

Auto start steering wheel heater

- On
- Off

Auto start driver seat heater

- On
- Off

Interior air quality system

- On
- Off

Reset climate settings

All menus in **Climate settings** are given original factory settings.

Related information

- MY CAR (p. 10)
- MY CAR - menu options (p. 11)

MY CAR Information

Information menu option in the MY CAR menu source handles functions such as Number of keys and VIN number.

Information

Number of keys

VIN number

DivX® VOD code

Bluetooth software version in car

Related information

- MY CAR (p. 10)
- MY CAR - menu options (p. 11)

AUDIO AND MEDIA

Audio and media

The audio and media system consists of radio (p. 28), media player (p. 38) as well as the option to communicate with mobile phone* (p. 53) . Information is presented on a 5-inch screen* in the upper section of the centre console. Functions can be controlled via buttons in the steering wheel, in the centre console below the screen or via a remote control* (p. 62) .

If the audio and media system is active when the engine is switched off then it is automatically activated the next time the key is inserted into key position I or higher, and it continues with the same source (e.g. radio) as before the engine was switched off (the driver's door must be closed on cars with Keyless systems*).

The audio and media system can be used for 15 minutes at a time without the remote control key being in the ignition switch by pressing the On/Off button.

When the car is being started the audio and media system is switched off temporarily and continues when the engine has started.

i NOTE

Remove the remote control key from the ignition switch if the infotainment system is used when the engine is switched off. This is to avoid discharging the battery unnecessarily.

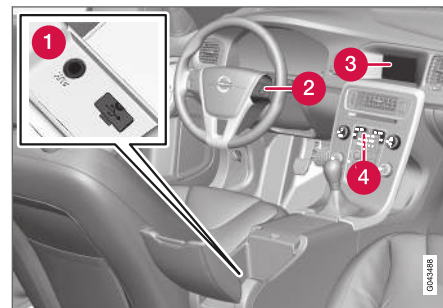
Audyssey MultEQ*



The Audyssey MultEQ system has been used in the development and tuning of the sound to ensure a world-class sound experience.

Audio and media - overview

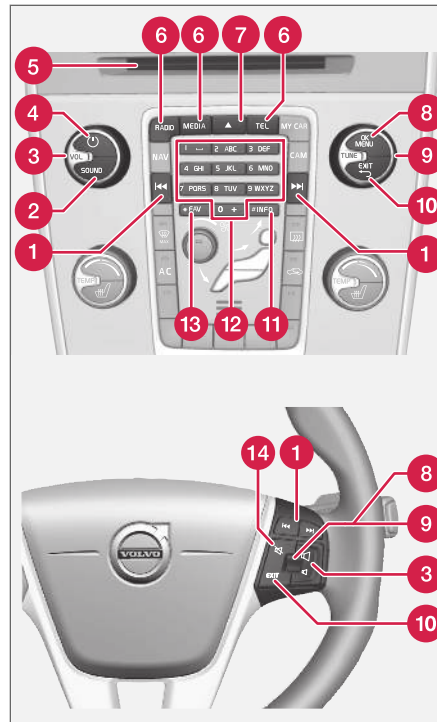
Overview of the audio and media system's different parts.



- 1 AUX and USB* inputs for external audio sources (p. 45) (e.g. iPod®).
- 2 Steering wheel keypad*.
- 3 5-inch screen.
- 4 Centre console control panel.

Audio and media - operating the system

The audio and media system is controlled from the centre console and partly from the steering wheel buttons. The information is presented on the screen in the upper section of the centre console.



- 1** Scroll/fast wind/search – Short press scrolls between disc tracks, preset radio sta-

tions¹ or chapter². A **long press** fast forwards through disc tracks or searches for the next available radio station.

- 2** **SOUND** - press for access to audio settings (bass, treble, etc.). For more information, see general audio settings (p. 26) .
- 3** **VOL** - raise or lower the volume.
- 4** **ON/OFF/MUTE** – **short press** starts the system and **long press** (until the screen is off) switches off. Note that the whole of the Sensus system (including navigation* and phone functions*) starts/switches off at the same time. Briefly press to mute the sound (MUTE) or restore the sound if it had been switched off.
- 5** Disc insert and eject slot.
- 6** **Main sources** – press to select the main source (e.g. **RADIO, MEDIA**). Last active source is shown (e.g. **FM1**). A new source view is selected if the main source button is pressed while in **RADIO** or **MEDIA**. If you are in **TEL*** or **NAV*** and press the main source button then a shortcut menu is shown with commonly used menu options.
- 7** Disc eject.
- 8** **OK/MENU** - press the thumbwheel in the steering wheel or the button in the centre

¹ Does not apply to DAB.

² Only applies to DVD discs.



console to accept selections in menus. If you are in the normal view and press **OK/MENU** a menu is shown for the selected source (e.g. **RADIO** or **MEDIA**). Arrow to the right of the screen is shown when there are underlying menus.

- 9 **TUNE** - turn the thumbwheel in the steering wheel or the knob in the centre console to scroll among tracks/folders, radio and TV*

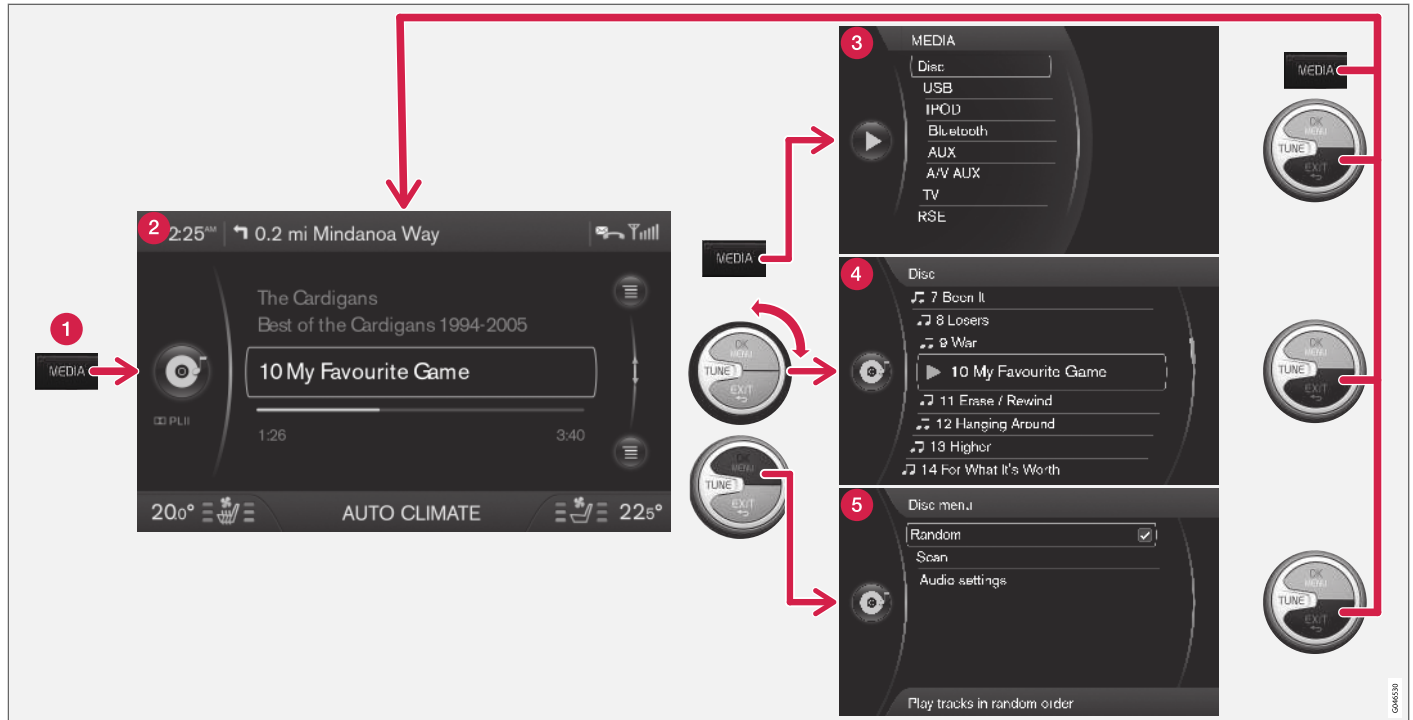
stations, phone contacts* or to navigate among choices on the display screen.

- 10 **EXIT** – **short press** leads upwards in the menu system, interrupts current function, interrupts/rejects phone calls or erases entered characters. **Long press** leads to normal view, or if you are in normal view to the highest menu level (main source view), from where you can reach the same main source buttons located in the centre console (6).
- 11 **INFO** - If more information than can be shown on the screen is available, press the

INFO button to see the remaining information.

- 12 Preset buttons, input of numbers and letters.
- 13 **FAV** - shortcut to a favourite setting. The button can be programmed for a commonly used function (e.g. FM, AUX). For more information, see favourites (p. 25).
- 14 **MUTE** – press to switch off the radio/media audio or restore the audio if it has been switched off.

Menus



The example shows navigation to different functions when a disc is played back. (1) Main source button, (2) Normal view, (3) Shortcut/Source menu, (4) Quick menu, (5) Source menu.

- ◀◀ **1 Main source button** – press to change the main source or to show the Shortcut/Source menu in the active source.
- 2 Normal view** – normal mode for the source.
- 3 Shortcut/Source menu** – shows commonly used menu options in the main sources, e.g. **TEL** and **MEDIA** (accessed by pressing the active source's main source button (1)).
- 4 Quick menu** – fast mode when **TUNE** is turned, e.g. for changing disc tracks, radio station, etc.
- 5 Source menu** – for menu navigation (accessed by pressing **OK/MENU**).

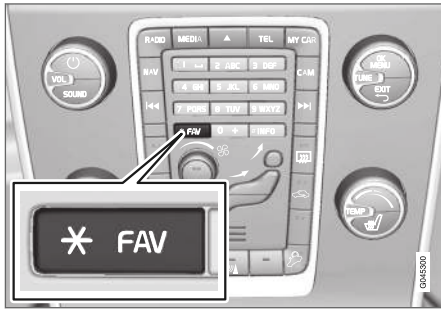
The appearance depends on the source, equipment in the car, settings, etc.

Select main source by pressing a main source button (1) (**RADIO, MEDIA, TEL**). To navigate through the source menus, use the controls **TUNE, OK/MENU, EXIT** or the main source button (1).

For available functions, see Audio and media - menu overview (p. 65).

Favourites

Save (p. 25) frequently used functions as favourites. Possible functions that can be saved are within radio, media, reversing camera and menu source MY CAR where many of the car's functions are handled, e.g. setting the clock, door mirrors and locks. The function is then accessed easily by pressing the **FAV** button.



FAVThe button can be used to save functions that are used frequently so that the function can be started simply by pressing **FAV**. You can select a favourite (e.g. **Equalizer**) for each function in accordance with the following:

In **RADIO** mode:

- AM³
- FM1/FM2

- DAB1*/DAB2*

In **MEDIA** mode:

- DISC
- USB*
- iPod®*
- Bluetooth®*
- AUX
- TV*

It is also possible to select and save a favourite for **MY CAR**, **CAM*** and **NAV***. Favourites can also be selected and saved under **MY CAR**.

Related information

- Audio and media (p. 20)
- MY CAR (p. 10)
- Radio (p. 28)
- Media player (p. 38)

Save as favourite

Save frequently used functions as favourites (p. 25). The function can then be started easily by pressing the **FAV** button (p. 21).

To save a function as a favourite:

1. Select a main source (e.g. **RADIO**, **MEDIA**).
2. Select a wavelength or source (**FM1**, **Disc**, etc.).
3. Press and hold the **FAV** button until the "favourites menu" is shown.
4. Turn **TUNE** to select an option from the list and press **OK/MENU** to save.
 - > When the main source (e.g. **RADIO**, **MEDIA**) is active the saved function is available via a short press on **FAV**.

Related information

- Audio and media (p. 20)
- MY CAR - car settings (p. 13)

³ Does not apply to the V60 Twin Engine and S60L Twin Engine.

Audio and media - audio settings

The audio system is pre-calibrated for optimal sound reproduction, but can be adapted to your needs.

Setting for optimal sound reproduction

The audio system is pre-calibrated for optimum sound reproduction by means of digital signal processing.

This calibration takes into account loudspeakers, amplifiers, passenger compartment acoustics, listener position etc. for each combination of car model and audio system.

There is also a dynamic calibration that takes into account the position of the volume control, radio reception and vehicle speed.

The controls explained in these operating instructions, e.g. **Bass**, **Treble** and **Equalizer**, are only intended for the user to be able to adapt the sound reproduction according to personal taste.

Audio and media - general audio settings

General audio settings for the audio and media system.

Press the **SOUND** button (p. 21) to access the audio settings menu (**Bass**, **Treble**, etc.). Scroll forward with **SOUND** or **OK/MENU** to your selection (e.g. **Treble**).

Adjust the setting by turning **TUNE** and save the setting with **OK/MENU**.

Continue pressing **SOUND** or **OK/MENU** to access other options:

- **Surround*** - Can be set to the On/Off position. When On is selected, the system selects the setting for optimal sound reproduction. Normally **DPLII** and **PLII** then appear in the display screen. If the recording is made with Dolby Digital technology then playback will take place with this setting, **DIGITAL** then appears in the display screen. When Off is selected, 3-channel stereo is available.
- **Bass** - Bass level.
- **Treble** - Treble level.
- **Fader** - Balance between the front and rear speakers.

- **Balance** - Balance between the left and right-hand speakers.
- **Subwoofer*** - Bass speaker level.
- **DPL II surround level**⁴ - Level for surround.

Related information

- Audio and media - operating the system (p. 21)

⁴ Only when Surround is activated.

Audio and media - advanced audio settings

Adapt the audio settings for radio and media according to your requirements.

The following functions can be adapted:

- Setting the equaliser (p. 27)
- Setting the audio profile (p. 27)
- Setting the audio volume and automatic volume control (p. 28)
- Setting the audio volume for external audio source (p. 48)

Related information

- Audio and media - operating the system (p. 21)

Setting the equaliser

Set the equaliser* and adjust the volume separately for different radio frequencies or TV.

1. Press **OK/MENU** in the normal view for the media source in order to access **Audio settings** and select **Equalizer**.
2. Select wavelength by turning **TUNE** and confirm with **OK/MENU**.
3. Adjust the audio settings by turning **TUNE** and confirm with **OK/MENU**. Continue in the same way with other wavelengths you want to change.
4. When you have finished with audio settings, press **EXIT** to confirm and return to normal view.

Related information

- Audio and media - advanced audio settings (p. 27)
- Audio and media - operating the system (p. 21)

Setting the audio profile

Set the audio profile* and optimise your audio experience in accordance with your needs.

The sound experience can be optimised for the driver's seat, both front seats or the rear seat. If there are passengers in both the front and rear seats then the option recommended is; both front seats. Access the options in the normal view for the media source by pressing **OK/MENU** and selecting **Audio settings** → **Sound stage**.

Related information

- Audio and media - audio settings (p. 26)
- Audio and media - operating the system (p. 21)

Setting the audio volume and automatic volume control

Set the audio compensation for excessive noise in the passenger compartment.

The audio system compensates for disrupting noises in the passenger compartment by increasing the volume in relation to the speed of the car. The compensation level can be set to low, medium, high or off. Select level in the normal view for the media source by pressing **OK/MENU** and then selecting **Audio settings** → **Volume compensation**.

Related information

- Audio and media - advanced audio settings (p. 27)
- Audio and media - operating the system (p. 21)

Radio

It is possible to listen to the AM⁵ and FM radio frequencies, and in certain cases also digital radio (DAB)* (p. 36).



Controls for radio functions.

For operating the radio, see Operating the system (p. 21).

AM⁵/FM radio

- Radio tuning (p. 29)
- Radio stations as presets (p. 31)
- RDS functions (p. 32)
- Radio programme types (PTY) (p. 34)
- Radio text (p. 34)

Digital radio* (DAB)

- Digital radio (DAB)* (p. 36)

- Storing channel groups (Ensemble learn) (p. 36)
- Navigation in channel group list (Ensemble) (p. 37)
- Radio stations as presets (p. 31)
- Radio programme types (PTY) (p. 34)
- Radio text (p. 34)
- DAB to DAB link (p. 37)
- Digital radio (DAB)* - wavelength (p. 37)
- Digital radio (DAB)* - subchannel (p. 38)
- Digital radio (DAB)* - resetting (p. 38)

Related information

- Menu overview - AM (p. 65)
- Menu overview - FM (p. 65)
- Menu overview - Digital radio (DAB)* (p. 66)

⁵ Does not apply to the V60 Twin Engine and S60L Twin Engine.

Radio tuning



The radio automatically compiles a radio station list* (p. 29) of the strongest radio stations whose signals it is currently receiving. It is possible to activate automatic (p. 29)- or manual (p. 30) radio tuning.

NOTE

The reception is dependent both on how good the signal strength and signal quality are. The transmission may be disturbed by various factors such as tall buildings or the transmitter being far away. Coverage level can also vary depending on where in the country you are located.

Automatic radio tuning

Searches for the next/previous available station.

1. Press **RADIO**, turn **TUNE** until the desired wavelength (e.g. **FM1**) is shown, press **OK/MENU**.
2. Hold in  /  in the centre console (or in the steering wheel keypad*). The radio searches for the next/previous available station.

Radio station list*

The radio automatically compiles a radio station list of the strongest radio stations whose signals it is currently receiving. This enables you to find a station when you drive into an area where you do not know the radio stations and their frequencies.

To go to the list and select a station:

1. Select the desired wavelength (e.g. **FM1**).
2. Turn **TUNE** one step in either direction. This displays the list of all stations in the area. The currently tuned station is indicated with enlarged text in the list.
3. Turn **TUNE** again in either direction to select a station from the list.
4. Confirm your choice by pressing **OK/MENU**.



i NOTE

- The list only shows the frequencies of stations that are currently being received, **not** a complete list of all radio frequencies on the selected wavelength.
- If the signal from the currently received station is weak, this may prevent the radio from updating the station list. If this occurs, press the **INFO** button (while the station list is shown in the display screen) in order to change to manual tuning and set a frequency. If the station list is no longer shown, turn **TUNE** one step in either direction to show the list again, and press **INFO** to switch.

The list disappears from the display screen after a few seconds.

If the station list is no longer shown, turn **TUNE** one step in either direction and press the **INFO** button in the centre console to change to manual tuning (p. 30) (or to return from manual tuning to the function for Station list).

Manual radio tuning

The radio automatically compiles a radio station list* (p. 29), but it is possible to perform radio tuning manually.

The preset from the factory is that the radio shows the station list of the strongest stations in the area when you turn **TUNE**. When the radio station list is shown, press the **INFO** button in the centre console to change to manual tuning. This allows you to select a frequency from the list of all available radio frequencies in the selected wavelength. In other words, if turn **TUNE** one step in a manual search the frequency is changed from e.g. 93.3 to 93.4 MHz, etc.

To manually select a station:

1. Press the **RADIO** button, turn **TUNE** until the desired wavelength (e.g. **FM1**) is shown, press **OK/MENU**.
2. Turn **TUNE** to select a frequency.

i NOTE

The preset from the factory is that the radio automatically searches for the stations in the area where you are driving (see section "Radio station list").

But if you have changed over to manual tuning (by pressing the **INFO** button in the centre console when the station list was shown), then the radio remains set in the function for manual tuning the next time you switch on the radio. To change back to the function for "Radio station list", turn **TUNE** one step (to show the complete list of stations) and press the button **INFO**.

Note that if you press **INFO** when the station list is not shown then **INFO** is activated. For more information on this function, see Audio and media - operating the system (p. 21).

Radio stations as presets

Frequently used radio stations are optimally saved as presets in order to facilitate simple activation.



Station presets.

AM⁶/FM radio

10 presets can be stored per wavelength (e.g. FM1).

The stored presets are selected using the preset buttons.

1. Tune into a station, see Radio tuning (p. 29).
2. Hold in one of the preset buttons for a few seconds, the sound disappears during this time and returns when the station is stored. The preset button can now be used.

A list of pre-selected channels can be shown in the screen*. To activate/deactivate the function, in the normal view for the AM/FM source, press **OK/MENU** and select **Show presets**.

Digital radio* (DAB)

10 station presets can be stored per wavelength. DAB has 2 memories for presets: **DAB1** and **DAB2**. Storage of presets is performed by means of a long press on the desired preset button, for more information see FM radio above. The stored presets are selected using the preset buttons.

A preset contains one channel but no subchannels. If a subchannel is being played and a preset is saved then only the main channel is registered. This is because subchannels are temporary. At the next attempt to retrieve the preset, the channel which contained the subchannel will be played. The preset is not dependent on the channel list.

A list of pre-selected channels can be shown in the screen*. To activate/deactivate the function, in the normal view for the DAB source, press **OK/MENU** and select **Show presets**.

i NOTE

The audio system's DAB system does not support all functions in the DAB standard.

Related information

- Audio and media - operating the system (p. 21)

⁶ Does not apply to the V60 Twin Engine and S60L Twin Engine.

RDS functions

RDS allows the radio to switch automatically to the strongest transmitter. RDS allows you to get traffic information (TP), for example.

RDS (Radio Data System) links FM transmitters into a network. An FM transmitter in such a network sends information that gives an RDS radio the following functions:

- Automatically switches to a stronger transmitter if reception in the area is poor.
- Searches for programme type, such as traffic information or news.
- Receives text information on current radio programme.

NOTE

Some radio stations do not use RDS or only selected parts of its functionality.

If a required programme type is located the radio can switch stations interrupting the audio source currently in use. For example, if the CD player is in use, it is paused. The interrupting transmission is played back at a preset volume (p. 34). The radio returns to the previous audio source and volume when the set programme type is no longer broadcast.

The programme functions alarm (**ALARM!**) traffic information (**TP**) and news (**NEWS**) interrupt one another in order of priority, where alarm has the

highest priority. For additional programme interruption settings (**EON Distant** and **EON Local**), see EON (p. 33). Press **EXIT** to return to the interrupted audio source, press **OK/MENU** to clear the message.

Related information

- Alarms in the event of accidents and disasters (p. 32)
- Radio text (p. 34)
- Automatic radio frequency update (AF) (p. 35)
- Regional radio programmes (REG) (p. 35)
- Resetting RDS functions (p. 35)

Alarms in the event of accidents and disasters

The radio function is used to warn of serious accidents and catastrophes.

The message **ALARM!** appears on the display screen when an alarm message is transmitted.

The alarm cannot be temporarily interrupted or deactivated.

Related information

- RDS functions (p. 32)

Traffic information (TP)

This function allows traffic information that is broadcast within a set radio station's RDS network to break through.

The **TP** symbol indicates that the function is activated. If the preset station can send traffic information then this is shown by **TP** glowing brightly in the display screen, otherwise **TP** will be grey.

- To activate/deactivate, in the normal view for the FM source, press **OK/MENU** and select **TP**.

TP from selected station/all stations

The radio can only interrupt for traffic information from the selected station or all stations within the RDS network.

- To change, in the normal view for the FM source, press **OK/MENU** and select **Advanced settings** → **Set TP favourite**.

Related information

- RDS functions (p. 32)

Enhanced Other Networks (EON)

EON is useful in urban areas with many regional radio stations. It allows the distance between the car and the radio station transmitter to determine when programme functions should interrupt the current audio source.

- To activate/deactivate, in the normal view for the FM source, press **OK/MENU** and select one of the options under **Advanced settings** → **EON**:
 - **Local** – interrupts only if the radio station transmitter is close.
 - **Distant**⁷ – interrupts if the station transmitter is far away, even if there is a lot of static.

Related information

- RDS functions (p. 32)

News broadcasts

This function allows news broadcasts within a set radio station's RDS network to break through.

The symbol **NEWS** shows that the function is active.

- To activate/deactivate, in the normal view for the FM source, press **OK/MENU** and select **News settings** → **News**.

News from selected station/all stations

The radio can only interrupt for news from the selected station or all stations in the RDS network.

- To change, in the normal view for the FM source, press **OK/MENU** and select **News settings** → **Set news favourite**.

Related information

- RDS functions (p. 32)

⁷ Factory settings.

Radio programme types (PTY)

The PTY function can be used to select one or more radio programme types, such as Pop Music and Serious Classical Music. After selecting a programme type, navigation only takes place within the channels that are broadcasting that type.

PTY can be selected for DAB radio. The PTY symbol is shown in the screen when the function is active. This function allows programme types broadcast within a set station's RDS network to break through.

PTY for DAB radio

Programme type is selected in the normal view for the DAB source by pressing **OK/MENU** and then **PTY filtering**. Exit this mode as follows:

- Press **EXIT**.
 - > An indicator is shown in the screen when PTY is activated.

In some cases DAB radio will exit PTY mode, see DAB to DAB link (p. 37).

Related information

- Volume control for interrupting radio programme types (PTY) (p. 34)
- RDS functions (p. 32)

Volume control for interrupting radio programme types (PTY)

The interrupting programme types, e.g. **NEWS** or **TP**, are heard at the volume selected for each respective programme type. If the volume level is adjusted during the programme interruption, the new level is saved until the next programme interruption.

Related information

- Radio programme types (PTY) (p. 34)
- RDS functions (p. 32)

Radio text

Certain RDS stations transmit information on programme content, artists etc. This information is shown in the display screen⁸. Radio text can be shown for FM and DAB radio.

Radio text for FM radio

- To activate/deactivate, in the normal view for the FM/DAB source, press **OK/MENU** and select **Show radio text**.

i NOTE

Only one of the functions "**Show radio text**" and "**Show presets**" can be activated at a time. If one of them is activated when the other is already activated, then the previously activated function is deactivated automatically. Both functions can be deactivated.

Related information

- RDS functions (p. 32)
- Digital radio (DAB)* (p. 36)

⁸ Only cars with 7-inch screen.

Automatic radio frequency update (AF)

The function automatically selects the best frequency for the set radio station.

In order to find the best frequency the function may, in exceptional cases, need to search the entire FM wavelength.

- To activate/deactivate, in the normal view for the FM source, press **OK/MENU** and select **Advanced settings** → **Alternative frequency**.

Related information

- RDS functions (p. 32)

Regional radio programmes (REG)

This function causes the radio to continue with a regional radio transmitter despite that its signal strength is low.

The symbol **REG** shows that the function is active.

- To activate/deactivate, in the normal view for the FM source, press **OK/MENU** and select **Advanced settings** → **REG**.

Related information

- RDS functions (p. 32)

Resetting RDS functions

All radio settings can be reset to the original factory settings.

- To reset, in the normal view for the FM source, press **OK/MENU** and select **Advanced settings** → **Reset all FM settings**.

Related information

- RDS functions (p. 32)

Digital radio (DAB)*

DAB (Digital Audio Broadcasting) is a digital broadcasting system for radio. The car supports DAB, DAB+ and DMB.

i NOTE
Coverage for DAB is not available in all locations. If there is no coverage then the message No reception is shown in the display screen.

Service and Ensemble

- **Service** - Channel, radio channel (only audio services are supported by the system).
- **Ensemble** - A collection of radio channels on the same frequency.

Related information

- Storing channel groups (Ensemble learn) (p. 36)
- Navigation in channel group list (Ensemble) (p. 37)
- Radio (p. 28)
- Radio stations as presets (p. 31)
- Radio programme types (PTY) (p. 34)
- Radio text (p. 34)
- DAB to DAB link (p. 37)
- Digital radio (DAB)* - wavelength (p. 37)
- Digital radio (DAB)* - subchannel (p. 38)

- Digital radio (DAB)* - resetting (p. 38)

Storing channel groups (Ensemble learn)

Storage of channel groups (Ensemble learn) for digital radio (DAB).

When the vehicle is moved to a new broadcasting area, programming of existing channel groups in the area may be necessary.

Programming of channel groups creates an updated list of all available channel groups. The list is not updated automatically.

For programming, in the normal view for the DABsource, press **OK/MENU** and select **Ensemble learn**. Programming can also take place as follows:

1. Turn **TUNE** one step in either direction.
 - > **Ensemble learn** is shown in the list of available channel groups.
2. Press **OK/MENU**.
 - > New programming is started.

Programming can be cancelled with **EXIT**.

Related information

- Digital radio (DAB)* (p. 36)
- Navigation in channel group list (Ensemble) (p. 37)

Navigation in channel group list (Ensemble)

Navigation in the channel group list (Ensemble) for digital radio (DAB).

To navigate in and access the channel group list turn **TUNE**. The name of the Ensemble is shown in the upper part of the display screen. When switching to the new Ensemble the name changes to the new one.

- **Service** - Shows channels irrespective of the channel group to which they are allocated. The list can also be filtered using the selection of programme type (**PTY filtering**), see Radio programme types (PTY) (p. 34).

Related information

- Storing channel groups (Ensemble learn) (p. 36)
- Digital radio (DAB)* (p. 36)
- Radio programme types (PTY) (p. 34)

DAB to DAB link

DAB to DAB linking means that the DAB radio can go from one channel with poor or no reception to the same channel in another channel group with better reception.

There may be a certain delay when changing channel group. There may be a period of silence between the current channel no longer being available to the new channel becoming available.

- To activate/deactivate, in the normal view for the DAB source, press **OK/MENU** and select **Advanced settings → DAB linking**.

Digital radio (DAB)* - wavelength

DAB is transmitted on wavelength **Band III**.

It is not certain that all channel groups will be found.

- In the normal view for the DAB source, wavelengths can be activated/deactivated by pressing **OK/MENU** and then selecting **Advanced settings → DAB band**.

Related information

- Digital radio (DAB)* (p. 36)

Digital radio (DAB)* - subchannel

Secondary components are usually named subchannels. These are temporary and can contain e.g. translations of the main programme into other languages.

If one or more subchannels are broadcast then the **✓** symbol is shown to the left of the channel name in the display screen. A subchannel is indicated by the - symbol appearing to the left of the channel name in the display screen.

Press **▶▶** to access the subchannels.

Subchannels can only be accessed on the selected main channel and not on any other channel without selecting it.

- In the normal view for the **DAB** source, display of subchannels can be activated/deactivated by pressing **OK/MENU** and then selecting **Advanced settings** → **Sub channels**.

Digital radio (DAB)* - resetting

All DAB settings can be reset to the original factory settings.

- Reset is performed in the normal view for the DAB source by pressing **OK/MENU** and then selecting **Advanced settings** → **Reset all DAB settings**.

Related information

- Digital radio (DAB)* (p. 36)

Media player

The media player can playback audio and video from CD/DVD* discs (p. 39) and externally connected audio sources via the AUX/USB* input (p. 45) or wirelessly stream audio files from external devices via Bluetooth®. Certain media players and have the option to communicate with a mobile phone* via Bluetooth®.



Controls for the media player.

For operating the media player, see Operating the system (p. 21).

Related information

- Audio and media (p. 20)
- Media Bluetooth®* (p. 49)
- Remote control* (p. 62)
- Media player - compatible file formats (p. 44)

* Option/accessory.

CD/DVD*

Media player (p. 38) can play back pre-recorded and burned CD/DVD discs.

The media player supports and can play the following main types of discs and files:

- Pre-recorded CD discs (CD Audio).
- Burned CD discs with audio and/or video files.
- Pre-recorded DVD video discs.
- Burned DVD discs with audio and/or video files.

For more information about the supported formats, see compatible file formats (p. 44).

Related information

- Audio and media - operating the system (p. 21)
- Playback and navigation of CD/DVD* disc (p. 39)
- Playback and navigation of DVD* video discs (p. 42)

Playback and navigation of CD/DVD* disc

For basic information on playback and navigation, see Operating the system (p. 21). See below for a more detailed description.

Starting playback of a disc

Press the **MEDIA** button in the normal view for the media source, turn **TUNE** until **Disc** is shown and press **OK/MENU**. If there is a disc in the media player then the disc starts playing back automatically, otherwise **Insert disc** is shown in the display screen. Then insert a disc, with text side up. The disc starts to play back automatically.

If a disc with audio/video files is inserted into the player then the disc's folder structure needs to be loaded. Depending on the quality of the disc and the quantity of information there may be a certain delay before playback starts.

Disc eject

Press the eject button (p. 21) to eject the disc.

A disc remains in the ejected position for about 12 seconds, after which it is inserted back into the player for safety reasons.

Pause in playback (pause)

When the volume is reduced entirely or MUTE is pressed, the media player is paused. When the

volume is increased or MUTE is pressed again, the media player starts. It is also possible to pause via the menu system⁹, press **OK/MENU** and select **Play/Pause**.

i NOTE

A video film is only shown when the car is stationary. When the car is moving at a speed of over about 8 km/h no picture is shown and **No visual media available while driving** appears on the display screen, although the audio is heard during this time. The picture is shown again as soon as the car's speed falls below about 6 km/h.

i NOTE

Some audio files that are copy-protected by record companies or privately copied audio files cannot be loaded by the player.

Related information

- Audio and media - operating the system (p. 21)
- Playback and navigation of burned discs with audio/video files* (p. 40)
- Playback and navigation of DVD* video discs (p. 42)
- Fast forward/reverse (p. 41)

⁹ Does not apply to CD Audio.

- Scan disc track or audio file (p. 41)
- Random selection of disc track or audio file (p. 42)
- Media player - compatible file formats (p. 44)

Playback and navigation of burned discs with audio/video files*




Playback and navigation of burned discs with audio/video files.

NOTE

A video film is only shown when the car is stationary. When the car is moving at a speed of over about 8 km/h no picture is shown and **No visual media available while driving** appears on the display screen, although the audio is heard during this time. The picture is shown again as soon as the car's speed falls below about 6 km/h.

NOTE

Some audio files that are copy-protected by record companies or privately copied audio files cannot be loaded by the player.

Audio files have the symbol  , video files have the symbol  and folders have the symbol .

When playback of a file is complete the playback of the other files (of the same type) in that particular folder continues. Change¹⁰ of folder takes place automatically when all the files in the current folder have been played back. The system

automatically detects and changes setting when a disc containing only audio files or only video files is loaded into the media player and then plays back these files. However, the system does not change setting if a disc containing a mixture of audio and video files is loaded into the media player, but instead the player continues to play back the previous file type.

Repeat folder

This function makes it possible to play files in a folder over and over again. When the last file has been played out, playback of the first file starts again.

1. Press **OK/MENU**
2. Turn **TUNE** to **Repeat folder**
3. Press **OK/MENU** to activate/deactivate the function.

Related information



- Audio and media - operating the system (p. 21)
- Playback and navigation of CD/DVD* disc (p. 39)
- Playback and navigation of DVD* video discs (p. 42)
- Fast forward/reverse (p. 41)
- Scan disc track or audio file (p. 41)



¹⁰ If **Repeat folder** is activated then this does not take place.

- Random selection of disc track or audio file (p. 42)
- Media player - compatible file formats (p. 44)
- DivX® Video On Demand* (p. 43)

Fast forward/reverse

It is possible to fast forward/rewind audio and video files¹¹.

Hold the button for  /  depressed in order to fast forward/rewind audio or video files forward/backward.

Audio files are fast forwarded/rewound at one speed, while video files can be fast forwarded/rewound at several speeds. Repeatedly press the buttons  /  to increase the fast forward/rewind speed for video files. Release the button to return to viewing at normal speed.

Related information

- Audio and media - operating the system (p. 21)
- Playback and navigation of CD/DVD* disc (p. 39)
- Playback and navigation of external audio source* (p. 47)

Scan disc track or audio file

This function play backs the first ten seconds of each disc track/audio file.¹²

To scan selected source:

1. Press **OK/MENU** in the normal view for the selected source
2. Turn **TUNE** to **Scan**
 - > The first 10 seconds of each disc track or audio file are played.
3. Cancel the scan with **EXIT**, the disc track or audio file being played back will continue playing.

Related information

- Audio and media - operating the system (p. 21)
- Playback and navigation of CD/DVD* disc (p. 39)
- Playback and navigation of external audio source* (p. 47)
- Media Bluetooth®* (p. 49)

¹¹ Only applies to CD/DVD* discs, USB and iPod®.

¹² Does not apply to DVD video discs. For externally connected audio sources via the AUX/USB input this only applies to USB and iPod®. Not supported by all mobile phones.

Random selection of disc track or audio file

This function plays the tracks/audio files in random order¹³.

To listen to the tracks/audio files in random order for the selected source:

1. Press **OK/MENU** in the normal view for the selected source
2. Turn **TUNE** to **Random**
3. Press **OK/MENU** to activate/deactivate the function.

Related information

- Audio and media - operating the system (p. 21)
- Playback and navigation of CD/DVD* disc (p. 39)
- Playback and navigation of external audio source* (p. 47)
- Media Bluetooth®* (p. 49)

Playback and navigation of DVD* video discs

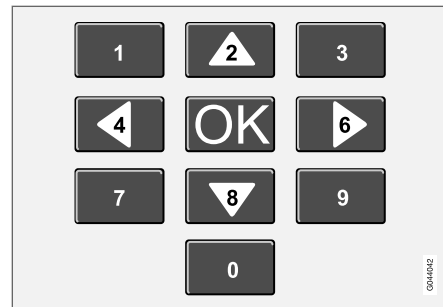
When playing back a DVD video disc a disc menu may appear on the display screen. The disc menu gives access to additional functions and settings, such as selecting subtitles, language and scene selection.

For basic information on playback and navigation, see Operating the system (p. 21). See below for a more detailed description.

NOTE

A video film is only shown when the car is stationary. When the car is moving at a speed of over about 8 km/h no picture is shown and **No visual media available while driving** appears on the display screen, although the audio is heard during this time. The picture is shown again as soon as the car's speed falls below about 6 km/h.

Navigation in the DVD video disc's menu



Navigation in the DVD video disc's menu is performed using the number keys in the centre console as illustrated above.



Changing chapter or title

Turn **TUNE** to access the list of chapters and navigate through them (if the film is being played back then it is paused). Press **OK/MENU** to select the chapter, this also leads back to the original position (if the film was being played back then it is restarted). Press **EXIT** to access the title list.

Titles are selected in the title list by turning **TUNE** and the selection is confirmed with **OK/MENU**, this also leads back to the chapter list. Press **OK/MENU** to activate the selection and

¹³ Does not apply to DVD video discs. For externally connected audio sources via the AUX/USB input this only applies to USB and iPod®. Not supported by all mobile phones.

return to the start position. Use **EXIT** to cancel the selection and this leads back to the original position (without any selection being made).

The chapter can also be changed by pressing on  /  on the centre console or the steering wheel keypad*.

Related information

- Audio and media - operating the system (p. 21)
- Playback and navigation of CD/DVD* disc (p. 39)
- Camera angle for playback of DVD* video discs (p. 43)
- Playback and navigation of burned discs with audio/video files* (p. 40)
- Fast forward/reverse (p. 41)
- Scan disc track or audio file (p. 41)
- Random selection of disc track or audio file (p. 42)
- Media player - compatible file formats (p. 44)

Camera angle for playback of DVD* video discs

If the DVD video disc supports it, the function can be used to choose from which camera position a particular scene should be shown.

In the normal view for the disc source, press

OK/MENU and select **Advanced settings** → **Angle**.

Related information

- Audio and media - operating the system (p. 21)

DivX® Video On Demand*

The media player can be registered to play back files of the type DivX® VOD from CD-/DVD discs, USB or iPod®.

The code for registration can be found in the menu system **MY CAR**, see MY CAR (p. 10).

For more information visit www.divx.com/vod.

Related information

- Audio and media - operating the system (p. 21)
- Playback and navigation of DVD* video discs (p. 42)
- Playback and navigation of burned discs with audio/video files* (p. 40)
- Playback and navigation of external audio source* (p. 47)

Picture settings*

You can adjust the display settings (when the car is stationary) for brightness and contrast.

1. In playback mode, press **OK/MENU** and select **Image settings**, confirm with **OK/MENU**.
2. Turn **TUNE** to the adjustment option and confirm with **OK/MENU**.
3. Adjust the setting by turning **TUNE** and confirm with **OK/MENU**.

To return to the settings list, press the **OK/MENU** or **EXIT**.

The picture settings can be reset to factory settings with the **Reset** option.

Related information

- Audio and media - operating the system (p. 21)
- Audio and media (p. 20)

Media player - compatible file formats

The media player can play back a variety of file types and is compatible with the formats in the following tables.

Compatible file formats for CD/DVD discs

i NOTE
Dual format, double-sided discs (DVD Plus, CD-DVD format) are thicker than regular CD discs and therefore playback cannot be guaranteed and malfunction may arise.
If a CD contains a mixture of MP3 and CDDA tracks, all MP3s will be ignored.

Audio format	CD audio, mp3, wma, aac, m4a
Video format	CD video, DVD video, divx, avi, asf

Compatible file formats via USB connection

Audio and video files in the following table are supported by the system for playback via the USB connection.

Audio format	mp3, wma, aac, m4a
Video format	divx, avi, asf

Technical data for file formats .avi and .divx

For the file to be played back, the following criteria must be met:

DivX version	3, 4, 5, 5:2
Image size	32x32-720x576 pixels
Video frame rate	Up to 30 fps DivX standard
Total capacity (total bit rate)	Up to 4 Mbps on average, up to 8 Mbps maximum (incl. video bit rate and audio bit rate)
Audio format	MP3 (MPEG-1/2 Layer 3), MPEG-1 (Layer 2), AC3 (Dolby D) See table below for audio specifications
Audio channels (ch)	2ch for MP3/MPEG-1, 5.1ch for AC3

Audio specifications for file formats .avi and .divx

Format	kHz	kbps
MPEG-1 Layer 2	44.1	64-384
	48	64-384

Format	kHz	kbps
MPEG-2 Layer 3 (MP3)	16	8-160
	22.05	8-160
	24	8-160
MPEG-1 Layer 3 (MP3)	32	32-320 ^A
	44.1	32-320 ^A
	48	32-320 ^A
AC3	48	64-448

^A Does not apply to 144 kbps.

Technical data for file format .asf

For the file to be played back, the following criteria must be met:

Image size	32x32-720x576 pixels
Video frame rate	Up to 30 fps
Total capacity (total bit rate)	Up to 384 kbs (incl. video bit rate and audio bit rate)
Audio format	ITU-T G.726
Audio channels (ch)	1 ch Stereo not supported

Audio sampling rate	8 kHz
Audio bit rate	16, 24, 32 or 40 kbps (for 8 kHz sampling)

Related information

- Playback and navigation of CD/DVD* disc (p. 39)
- Playback and navigation of DVD* video discs (p. 42)
- Playback and navigation of burned discs with audio/video files* (p. 40)
- Playback and navigation of external audio source* (p. 47)

External audio source via AUX/USB* input

An external audio source, e.g. an iPod® or MP3 player, can be connected (p. 46) to the audio system.



An audio source connected to the USB input can be operated¹⁴ using the car's audio controls. A device connected via the AUX input cannot be controlled via the car.

An iPod® or MP3 player with rechargeable batteries is recharged (when the ignition is on or the engine is running) if the device is plugged into the USB connection.

¹⁴ Only applies to the media source connected via the USB connection.



◀ USB memory

To facilitate the use of a USB memory stick, only store music files on it. It takes a lot longer for the system to load storage media that contains anything other than compatible music files.

i NOTE

The system supports mobile media compliant with USB 2.0 and the FAT32 file system and can handle 1000 folders with a maximum of 254 subfolders/files in every folder. The top level, which can handle up to 1000 subfolders/files, is an exception to this.

i NOTE

When using a longer model USB memory stick the use of a USB adapter cable is recommended. This is to avoid mechanical wear to the USB input and the connected USB memory stick.

USB hub

It is possible to connect a USB hub to the USB connection and thereby connect multiple USB devices simultaneously. USB device selection is carried out in the normal view for the USB source by pressing **OK/MENU** and then selecting **Select USB device**.

MP3 player

Many MP3 players have their own file systems that are not supported by the audio system. For use in the system, an MP3 player must be set in **USB Removable device/Mass Storage Device** mode.

iPod®

An iPod® is charged and supplied with power by the USB connection via the player's connection cable.

i NOTE

The system only supports the playback of audio files from iPod®.

i NOTE

When an iPod® is used as audio source, the car's infotainment system has a menu structure that is similar to the iPod® player's own menu structure.

Related information

- Audio and media - operating the system (p. 21)
- Playback and navigation of external audio source* (p. 47)
- Setting the audio volume for external audio source (p. 48)

Connecting an external audio source via AUX/USB* input

An external audio source, e.g. an iPod® or MP3 player, can be connected to the audio system via any of the connection points in the tunnel console.



Connection points for external audio sources.

To connect the audio source:

1. In the normal view for the media source, press **MEDIA**, turn **TUNE** to the desired audio source **USB**, **iPod** or **AUX** and press **OK/MENU**.
 - > If USB is selected then **Connect USB** is shown in the display screen.
2. Connect your audio source to one of the connections in the tunnel console storage compartment (see Connection points for external audio sources(p. 46)).

The text **Reading USB** is shown in the screen when the system is loading the storage media's file structure. Depending on the file structure and number of files there may be some delay before loading is finished.

i NOTE

The system supports most iPod® models produced in 2005 or later.

i NOTE

To prevent damage to the USB connection, this is shut off if the USB connection is short-circuited or if a connected USB unit is taking too much power (this may happen if the unit connected does not meet the USB standard). The USB connection is reactivated automatically the next time the ignition is turned on, unless the fault persists.




Related information

- External audio source via AUX/USB* input (p. 45)
- Playback and navigation of external audio source* (p. 47)

Playback and navigation of external audio source*

Playback and navigation of external audio source¹⁵.

For basic information on playback and navigation, see Operating the system (p. 21). See below for a more detailed description.

Audio files have the symbol , video files* have the symbol  and folders have the symbol .

See Compatible file formats (p. 44) for information about file formats that are supported by the media player.

When playback of a file is complete the playback of the other files (of the same type) in that particular folder continues. Change¹⁶ of folder takes place automatically when all the files in the current folder have been played back. The system automatically detects and changes setting when a device containing only audio files or only video files is connected to the USB port and then it plays back these files. However, the system does not change setting if a device containing a mixture of audio and video files is connected to the USB port, but instead the player continues to play back the previous file type.

Search function¹⁵

The keypad on the control panel in the centre console can be used to find a filename in the current folder.

The search function is accessed either by turning **TUNE** (to access the folder structure) or by pressing one of the letter keys. As a letter or character in a search string is entered you get closer to your search target. After a few seconds the search results are shown on the screen.

Start playback of a file by pressing **OK/MENU**.

Repeat folder¹⁷

This function makes it possible to play files in a folder over and over again. When the last file has been played out, playback of the first file starts again.

1. Press **OK/MENU**
2. Turn **TUNE** to **Repeat folder**
3. Press **OK/MENU** to activate/deactivate the function.

Fast forward/reverse

For information, see Fast forward/rewind (p. 41).

¹⁵ Only applies to USB and iPod®.

¹⁶ If **Repeat folder** is activated then this does not take place.

¹⁷ Only applies to USB.



◀ **Pause**

When the volume is reduced entirely or MUTE is pressed, the media player is paused. When the volume is increased or MUTE is pressed again, the media player starts. It is also possible to pause via the menu system¹⁸ by pressing **OK/MENU**, selecting **USB MENU** and then **Play/Pause**.

i NOTE

A video film is only shown when the car is stationary. When the car is moving at a speed of over about 8 km/h no picture is shown and **No visual media available while driving** appears on the display screen, although the audio is heard during this time. The picture is shown again as soon as the car's speed falls below about 6 km/h.

Related information

- Connecting an external audio source via AUX/USB* input (p. 46)
- External audio source via AUX/USB* input (p. 45)
- Scan disc track or audio file (p. 41)
- Random selection of disc track or audio file (p. 42)
- DivX® Video On Demand* (p. 43)

- Picture settings* (p. 44)

Setting the audio volume for external audio source

Set the volume for an external audio source (p. 45). If the volume is too high or too low then the quality of the sound may deteriorate.

If an external audio source (e.g. an MP3 player or iPod®) is connected to the AUX input then the audio source that is connected can have a different volume than the audio system's internal volume (e.g. radio). Correct this by adjusting the volume of the input:

1. In the normal view for the media source, press the **MEDIA** button and turn **TUNE** to **AUX** and wait a few seconds or press **OK/MENU**.
2. Press **OK/MENU** and then turn **TUNE** to **AUX input volume**. Confirm with **OK/MENU**.
3. Turn **TUNE** to adjust the volume for the AUX input.

¹⁸ Does not apply to iPod®

i NOTE

If the external audio source's volume is too high or too low, the quality of the sound may deteriorate. The audio quality may also be impaired if the player is charged while the infotainment system is in AUX mode. In which case, avoid charging the player via the 12 V socket.

Related information

- Audio and media - advanced audio settings (p. 27)
- Audio and media - operating the system (p. 21)

Media Bluetooth®*

The car's media player is equipped with Bluetooth® and can wirelessly play streaming audio files from external devices with Bluetooth®, such as mobile phones and PDAs.



Media Bluetooth® functions, controls overview.

The device must first be registered and connected to the car (p. 50).

Navigation and control of the audio can be carried out via the centre console buttons or via the steering wheel keypad*. In some external devices it is also possible to change tracks from the device.

To play back the audio the car's media player must first be set in **Bluetooth** mode.

When a mobile phone is connected to the car, it is also possible to remotely control a selection of

the mobile phone's functions, see Bluetooth® handsfree phone* (p. 53). Switch between the main sources **TEL** and **MEDIA** to operate each one's functions.

i NOTE

The Bluetooth® media player must support the Audio/Video Remote Control Profile (AVRCP) and Advanced Audio Distribution Profile (A2DP). The player should use AVRCP version 1.3, A2DP 1.2. Otherwise some functions may not work.

Not all mobile phones and external media players available in the market are fully compatible with the Bluetooth® function in the car's media player. Volvo recommends that you contact an authorised Volvo dealer for information on compatible phones and external media players.

i NOTE

The car's media player can only play the audio files via the Bluetooth® function.

Related information

- Scan disc track or audio file (p. 41)
- Random selection of disc track or audio file (p. 42)

Connecting and disconnecting a Bluetooth® device*

The car is equipped with Bluetooth® and can wirelessly communicate with other Bluetooth® devices after registration and connection (p. 50).

A maximum of ten Bluetooth® devices can be registered. Registration is performed once per device. After registration the device no longer needs to be activated as visible/searchable.

When the Bluetooth® function is active and the last device connected is in range it is connected automatically to the car. When the car searches for the last device connected its name is shown in the display screen. To connect to another device, press **EXIT** and select to change device (p. 52).

When the Bluetooth® device is out of range of the car it is automatically disconnected. It is also possible to manually disconnect (p. 52) a device. To deregister a Bluetooth® device from the car, select Removing a Bluetooth® device* (p. 53). The car will then not locate the device automatically.

It is possible to have two Bluetooth® devices connected simultaneously. One phone and one media device, which it is possible to switch between (p. 52). It is also possible to call with the phone and simultaneously stream audio files.

Related information

- Audio and media - operating the system (p. 21)
- Media Bluetooth®* (p. 49)
- Bluetooth® handsfree phone* (p. 53)

Registering a Bluetooth® device*

It is possible to have two Bluetooth® devices connected simultaneously. One phone and one media device, which it is possible to switch between. It is also possible to call with the phone and simultaneously stream audio files.

A maximum of ten Bluetooth® devices can be registered. Registration is performed once per device. After registration the device no longer needs to be activated as visible/searchable.

i NOTE

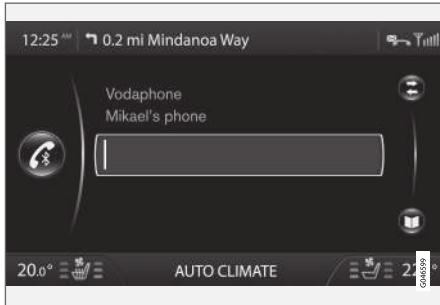
If the phone's operating system is updated then it is possible that the registration of the phone is interrupted. In which case, disconnect the phone, see Removing a Bluetooth® device* (p. 53) and then reconnect it.

Connecting an external device takes place in different ways depending on whether or not the device has been connected previously. The connection options below presume that this is the first time the device is being connected (registered) and that no other device is connected. The connection options show the connection of a phone. Connecting a media device (p. 49) is performed in the same way, but starting from the main source **MEDIA**.

There are two possible ways of connecting devices, either search for the external device from the

car, or search for the car from the external device. If one option does not work then try with the other.

If you are not already in the normal view for the phone, press **TEL** in the centre console.



Example of normal view for the phone.

Alternative 1 - search for the external device via the car's menu system

1. Make the external device searchable/visible via Bluetooth®, see the external device's manual or www.volvocars.com.
2. Press **OK/MENU** and follow the instructions on the car's display screen.
 - > The external device is now connected and can be controlled from the car.

Connection failed, press **EXIT** twice and connect in accordance with Alternative 2.

Alternative 2 - Search for the car with the Bluetooth® function of the external device

1. Make the car searchable/visible via Bluetooth®. Turn **TUNE** to **Phone settings**, confirm with **OK/MENU**, select **Discoverable** and confirm with **OK/MENU**.
2. Select **My Volvo Car** on the external device's screen and follow the instructions.
3. Enter an optional PIN code into the external device, then select the option to connect.
4. Press **OK/MENU** and then enter the same PIN code via the car's keypad in the centre console.

When the external device is connected, the external device's Bluetooth® name is shown in the car's display screen and the device can be controlled from the car.

Related information

- Audio and media - operating the system (p. 21)
- Connecting and disconnecting a Bluetooth® device* (p. 50)

Automatic connection of Bluetooth® device*

When one, or several, Bluetooth® devices are registered (p. 50) in the car, the last connected device is connected automatically when it is in range.

When the Bluetooth® function is active and the last device connected is in range it is connected automatically. When the car searches for the last device connected its name is shown in the display screen. If the last connected device is not available then the system will try to connect an previously connected device.

To connect to another device, press **EXIT**, select to connect a new device (p. 50) or change to another already registered device (p. 52).

Related information

- Audio and media - operating the system (p. 21)
- Connecting and disconnecting a Bluetooth® device* (p. 50)

Changing to another Bluetooth® device*

It is possible to change from a connected device to another one if there are several devices in the car. The device must first have been registered (p. 50) to the car.

Changing media device

1. Check that the external device is searchable/visible via Bluetooth®, see the manual for the external device.
2. In the normal view for the Bluetooth® media source, press **OK/MENU** and select **Change device**.
 - > The car searches for previously connected devices. The external devices detected are specified with their respective Bluetooth® name in the screen.
3. Select the device to be connected.
 - > Connection of the external device takes place.

Changing phone

1. Check that the external device is searchable/visible via Bluetooth®, see the manual for the external device.

2. In the normal view for the phone source, press **OK/MENU** and select **Change phone**.
 - > The car searches for previously connected devices. The external devices detected are specified with their respective Bluetooth® name in the screen.
3. Select the device to be connected.
 - > Connection of the external device takes place.

Related information

- Audio and media - operating the system (p. 21)
- Connecting and disconnecting a Bluetooth® device* (p. 50)

Disconnecting the Bluetooth® device*

When the Bluetooth® device is out of range of the car it is automatically disconnected. It is also possible to disconnect a phone manually.


When the mobile phone has been disconnected an ongoing call can be continued by using the mobile phone's built-in microphone and speaker.

The handsfree function is deactivated when the engine is switched off and the door is opened.

If you want to deregister a Bluetooth® device from the car, select **Remove Bluetooth® device** (p. 53). The car will then not locate the device automatically.

Manual disconnection of phone

The phone can be manually disconnected in the normal view for the phone source by pressing **OK/MENU** and then selecting **Disconnect phone**.

 NOTE
Even when your mobile phone has been manually disconnected, some mobile phones may automatically couple up to the last handsfree unit connected, e.g. when a new call begins.

Related information

- Audio and media - operating the system (p. 21)
- Connecting and disconnecting a Bluetooth® device* (p. 50)
- Media Bluetooth®* (p. 49)
- Bluetooth® handsfree phone* (p. 53)

Removing a Bluetooth® device*

If you do not want a Bluetooth® device registered to the car any longer then it is possible to remove (deregister) it from the car. The car will then not locate the device automatically.

Removing a media device

In the normal view for the Bluetooth® media source, press **OK/MENU** and select **Remove Bluetooth device**. Turn **TUNE** to select the device to be removed, confirm with **OK/MENU**.

Removing a phone

In the normal view for the phone source, press **OK/MENU** and select **Remove Bluetooth device**. Turn **TUNE** to select the device to be removed, confirm with **OK/MENU**.

Related information

- Audio and media - operating the system (p. 21)
- Connecting and disconnecting a Bluetooth® device* (p. 50)
- Media Bluetooth®* (p. 49)
- Bluetooth® handsfree phone* (p. 53)

Bluetooth® handsfree phone*

A mobile phone equipped with Bluetooth® can be connected wirelessly to the car.



Phone functions, controls overview.

The device must first be registered and connected to the car (p. 50).

The audio and media system acts as handsfree, with the facility to remotely control a selection of the mobile phone's functions. The mobile phone can be operated by its own keys irrespective of whether or not it is connected.

When a mobile phone is connected to the car, it is also possible to stream audio files from the phone or another Bluetooth®-connected media device, see Media Bluetooth®* (p. 49). Switch between the main sources **TEL** and **MEDIA** to operate each one's functions.







i NOTE

Only a selection of mobile phones are fully compatible with the handsfree function. Volvo recommends that you seek assistance from an authorised Volvo dealer for information on compatible phones.

Activate

A short press on **TEL** activates/searches last connected phone. If a phone is already connected, and **TEL** is pressed, a shortcut menu is shown with commonly used menu options for the phone. The  symbol indicates that a phone is connected.

To call

1. Make sure that the  symbol appears at the top of the screen and that the handsfree function is in phone mode.
2. Dial either the desired number or the speed dial number (p. 61). Or in normal view turn **TUNE** to the right to access the phone book, and to the left for the call register for all calls. For information on the phone book, see Phone book* (p. 57).
3. Press **OK/MENU**.

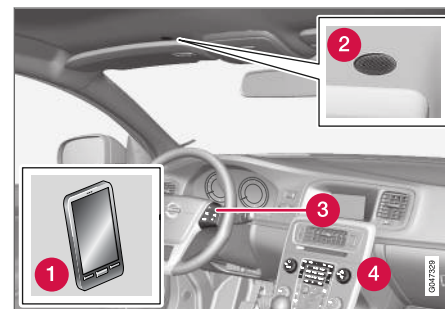
The call is interrupted with **EXIT**.

Related information

- Audio and media - operating the system (p. 21)
- Connecting and disconnecting a Bluetooth® device* (p. 50)
- Making and receiving calls* (p. 55)
- Bluetooth® handsfree phone* - audio settings (p. 56)
- Bluetooth®* version information (p. 56)

Bluetooth® handsfree phone* - overview

System overview for Bluetooth® handsfree phone.



System overview

- 1** Mobile phone
- 2** Microphone
- 3** Steering wheel keypad
- 4** Centre console control panel

Related information

- Audio and media - operating the system (p. 21)
- Connecting and disconnecting a Bluetooth® device* (p. 50)

Making and receiving calls*

Functions for handling phone calls.

Incoming call

- Press **OK/MENU** to answer the call, even if the audio system is in e.g. **RADIO** or **MEDIA** mode.

Refuse or end with **EXIT**.

Automatic answer

The automatic answer function means that calls are accepted automatically.

- To activate/deactivate, in the normal view for the phone source, press **OK/MENU** and select **Call options** → **Auto answer**.

In call menu

In the normal view for the phone source, one press on **OK/MENU** during the current call gives access to the following functions:

- **Mute** - audio system microphone is muted.
- **Mobile phone** - the call is transferred from handsfree to the mobile phone. For some mobile phones the connection is interrupted. This is normal. The handsfree function asks if you want to reconnect.
- **Dial number** - option to call a third party using the number keys (current call set in standby).

Call lists

The call lists are copied to the handsfree function at each new connection and are then updated during the connection. In normal view, turn to the left with **TUNE** to see the call register for **All calls** .

In the normal view for the phone source, press **OK/MENU** and select **All calls** to view all call registers:

- **All calls**
- **Missed calls**
- **Answered calls**
- **Dialled calls**
- **Call duration**

NOTE

Certain mobile phones show a list of the last dialled numbers in reverse order.

Voice mailbox

A speed dial number for the voice mailbox can be programmed in the normal view for the phone source, and then accessed later via a long press on **1**.

The voice mailbox number is changed in normal view for the phone source by pressing **OK/MENU** and selecting **Call options** → **Voice mailbox number** → **Change number**. If there

is no number stored then this menu can be reached with one long press on **1**.

Related information

- Audio and media - operating the system (p. 21)
- Bluetooth® handsfree phone* (p. 53)
- Bluetooth® handsfree phone* - audio settings (p. 56)
- Phone book* (p. 57)

Bluetooth® handsfree phone* - audio settings

It is possible to adjust the call volume, audio system volume and ring signal volume, and change the ring tone.

Phone call volume

The phone call volume can only be changed during a call. Use the steering wheel keypad* or turn the **VOL** control.

Audio system volume

Providing there is no ongoing call taking place, the audio system volume is controlled in the normal way by turning **VOL**.

If an audio source is active during an incoming call then it can be muted automatically. To activate/deactivate, in the normal view for the phone source, press **OK/MENU** and select **Phone settings** → **Sounds and volume** → **Mute radio/media**.

Ring volume

In the normal view for the phone source, press **OK/MENU** and select **Phone settings** → **Sounds and volume** → **Ring volume**. Adjust by turning **VOL**, press **OK/MENU** to hear the audio volume and press **EXIT** to save.

Ring signals

The built-in ring signals for the handsfree function can be selected in the normal view for the phone source by pressing **OK/MENU** and then selecting **Phone settings** → **Sounds and volume** → **Ring signals** → **Ring signal 1** etc.

NOTE

For some mobile phones, the ringtone on the phone connected will not be switched off when one of the inbuilt signals for the handsfree system is used.

In order to select the connected phone's ring signal¹⁹, in the normal view for the phone source, press **OK/MENU** and then select **Phone settings** → **Sounds and volume** → **Ring signals** → **Mobile phone ring signal**

Related information

- Audio and media - operating the system (p. 21)
- Bluetooth® handsfree phone* (p. 53)

Bluetooth®* version information

Show the car's current Bluetooth® version.

The car's current Bluetooth® version can be seen from the normal view in the main sources **MEDIA** or **TEL**:

- Press **OK/MENU** and select **Bluetooth software version in car**.
- Press **OK/MENU** and select **Phone settings** → **Bluetooth software version in car**.


Related information

- Audio and media - operating the system (p. 21)
- Bluetooth® handsfree phone* (p. 53)
- Media Bluetooth®* (p. 49)

¹⁹ Not supported by all mobile phones.


Phone book*

There are two phone books. These are combined in the car and are shown as a single phone book.

- The car downloads the connected mobile phone's phone book and only shows this phone book when the mobile phone it was downloaded from is connected.
- The car also has a built-in phone book. This contains all the contacts stored in the car irrespective of which phone was connected when saving them. These contacts are visible for all users, regardless of the mobile phone that is connected to the car. If a contact is saved in the car then the symbol  is shown in front of the contact in the phone book.

NOTE

Changes made from the car to a record in the mobile phone's telephone book will result in a new record in the car's telephone book, i.e. changes will not be saved to the phone. From the car, this will now look like you have double records, with different icons. Note also that when a shortcut number is saved or a change to a contact is made, this will result in a new record in the car's phone book.

All use of the phone book requires that the  symbol appears at the top of the screen and that the handsfree function is in phone mode.

Copy the mobile's phone book to the car's phone book

The audio and media system stores a copy of each registered mobile phone's phone book. The phone book can be copied automatically to the audio and media system during each connection.


- To activate/deactivate the function, in the normal view for the phone source, press **OK/MENU** and select **Phone settings** → **Download phone book**.

If the phone book contains a ringing caller's contact information then this is shown in the screen.

Copy individual contact to the car's phone book

There is also the option to copy an individual contact from the mobile phone's phone book to the car.

1. In the normal view for the phone source, press **OK/MENU** and select **Phone book** → **Search contact**.
2. Select the contact and press **OK/MENU**.

3. Press **OK/MENU** and then select **Options** → **Copy to car memory**.
 - > The symbol  is shown in front of the saved contact in the car's phone book and the contact is saved.

Related information

- Audio and media - operating the system (p. 21)
- Bluetooth® handsfree phone* (p. 53)
- Phone book* - speed dial numbers (p. 61)
- Phone book* - receiving a vCard (p. 61)
- Phone book* - memory status (p. 61)
- Phone book* - clearing (p. 62)

Phone book* - quick search for contacts

In the normal view for the phone source, turn **TUNE** to the right to show a list of contacts.

Turn **TUNE** to select and press **OK/MENU** to call.

Under the name of the contact is the phone number that is selected by default. If the symbol > appears to the right of the contact then there are several phone numbers stored for the contact. Press **OK/MENU** to show the numbers. Change and dial a number other than that selected by default by turning **TUNE**. Press **OK/MENU** to dial.

Search in the list of contacts by using the centre console's keypad to key in the start of the contact's name. For the function of the buttons, see Phone book* - character table keypad in centre console (p. 58).

The list of contacts can also be accessed from normal view by pressing and holding the button on the centre console's keypad with the letter that the contact searched for starts with. For example, a long press on the button for **6** gives instant access to that part of the list where the contacts with the letter **M** are located.

Related information

- Audio and media - operating the system (p. 21)
- Bluetooth® handsfree phone* (p. 53)

Phone book* - character table keypad in centre console

Character table of possible characters for use in the phone book.

Key	Function
1	Space . , - ? @ : ; / () 1
2 ABC	A B C Å Ä Æ À Ç 2
3 DEF	D E F È É 3
4 GHI	G H I Ì 4
5 JKL	J K L 5
6 MNO	M N O Ö Ø Ñ Ò 6
7 PQRS	P Q R S ß 7
8 TUV	T U V Ü Û 8
9 WXYZ	W X Y Z 9
★ FAV	Shift between upper and lower case letter.

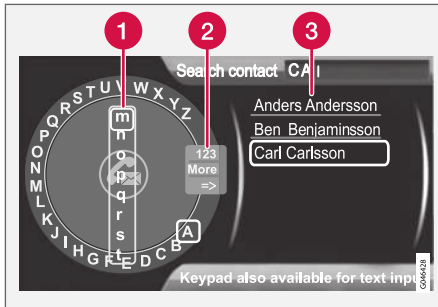
Key	Function
0 +	+ 0 p w
# INFO	# *

Related information

- Audio and media - operating the system (p. 21)
- Bluetooth® handsfree phone* (p. 53)
- Phone book* (p. 57)

Phone book* - searching for contacts

Searching for contacts in the phone book (p. 57).



Search contacts using the text wheel.

- 1 Character list
- 2 Changing the input mode (see following table)
- 3 Phone book

To search for or edit a contact, in the normal view for the phone source, press **OK/MENU** and select **Phone book** → **Search**.

i NOTE

There is no text wheel for High Performance, so **TUNE** cannot be used there to input characters: only the digit and letter buttons on the control panel in the centre console can be used for this.

1. Turn **TUNE** to the desired letter, press **OK/MENU** to confirm. The number and letter buttons on the control panel in the centre console can also be used.
2. Continue with the next letter and so on. The result of the search is shown in the phone book (3).
3. To change the input mode to numbers or special characters, or to go to the phone book, turn **TUNE** to one of the options (see explanation in the table below) in the list for changing the input mode (2), press **OK/MENU**.

123/ABC	Change between letters and numbers with OK/MENU .
More	Change to special characters with OK/MENU .
=>	Leads to the phone book (3). Turn TUNE to select a contact, press OK/MENU to see the saved numbers and other information.

A short press on **EXIT** deletes an input character. A long press on **EXIT** will clear all entered characters.

By pressing a number key in the centre console when the text wheel is shown (see previous illustration), a new character list (1) is shown in the screen. Continue repeatedly pressing the number key to the desired letter and then release. Continue with the next letter and so on. When a button is depressed the entry is confirmed when another button is depressed.

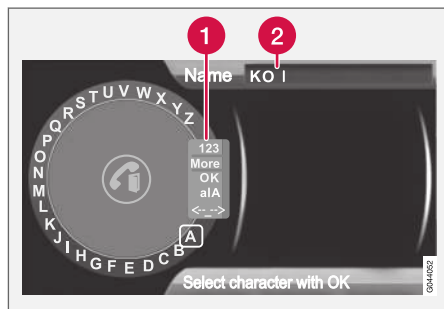
To enter a number, hold in the corresponding number key.

Related information

- Audio and media - operating the system (p. 21)
- Bluetooth® handsfree phone* (p. 53)

Phone book* - new contact

Create new contact in the phone book.



Entering letters for New contact.

- 1 Changing the input mode (see following table).
- 2 Input field.

In the normal view for the phone source, new contacts can be added by pressing **OK/MENU** and then selecting **Phone book** → **New contact**.

i NOTE

There is no text wheel for High Performance, so **TUNE** cannot be used there to input characters: only the digit and letter buttons on the control panel in the centre console can be used for this.

1. When the **Name** row is selected, press **OK/MENU** to reach the input mode (illustration above).
2. Turn **TUNE** to the desired letter, press **OK/MENU** to confirm. The number and letter buttons on the control panel in the centre console can also be used.
3. Continue with the next letter and so on. The name entered is shown in the input field (2) in the screen.
4. To change the input mode to numbers, special characters, change between uppercase/lowercase letters, etc., turn **TUNE** to one of the options (see explanation in the following table) in the list (1) and then press **OK/MENU**.

When the name has been fully entered, select **OK** in the list on the display screen (1) and press **OK/MENU**. Now continue with the telephone number in the same way as above.

When the telephone number has been entered, press **OK/MENU** and select a telephone number type (**Mobile phone**, **Home**, **Work** or **General**). Press **OK/MENU** to confirm.

When all details have been filled in, select **Save contact** in the menu to save the contact.

123/ABC	Change between letters and numbers with OK/MENU .
More	Change to special characters with OK/MENU .
OK	Save and go back to Add contact with OK/MENU .
alA	Change between uppercase and lowercase letters with OK/MENU .
<- ->	Press OK/MENU , the cursor moves to the input field (2) at the top of the display screen. The cursor can now be moved, with TUNE , to the appropriate place to e.g. insert new letters or delete with EXIT . To be able to insert new letters first go back to the input mode, by pressing OK/MENU .

Related information

- Audio and media - operating the system (p. 21)
- Bluetooth® handsfree phone* (p. 53)
- Phone book* (p. 57)

Phone book* - speed dial numbers

Store as speed dial number in the phone book (p. 57) in order to easily dial a number or a contact.

In the normal view for the phone source, speed dial numbers can be added by pressing

OK/MENU and then selecting **Phone menu** → **Phone book** → **Speed dial**.

Dialling with speed dial numbers can be performed in phone mode using the number keys on the keypad in the centre console, by pressing a number key and then pressing **OK/MENU**. If there is no contact stored on the speed dial number then an option is shown to save a contact to the selected speed dial number.

Related information

- Audio and media - operating the system (p. 21)
- Bluetooth® handsfree phone* (p. 53)

Phone book* - receiving a vCard

Receiving electronic business cards (vCard) to the car's phone book (p. 57).

It is possible to receive a vCard to the car's phone book from other mobile phones (other than the one currently connected to the car). In order to allow this the car is set to visible mode for Bluetooth®. The function is activated in the normal view for the phone source by pressing

OK/MENU and then selecting **Phone book** → **Receive vCard**.

Related information

- Audio and media - operating the system (p. 21)
- Bluetooth® handsfree phone* (p. 53)

Phone book* - memory status

Show phone book (p. 57) memory status.

The memory status of the car's phone book and the connected mobile phone's phone book can be viewed in the normal view for the phone source by pressing **OK/MENU** and then selecting **Phone book** → **Memory status**.

Related information

- Audio and media - operating the system (p. 21)
- Bluetooth® handsfree phone* (p. 53)

Phone book* - clearing

Clear the car's built-in phone book (p. 57).

The car's phone book can be deleted, this is carried out in the normal view for the phone source by pressing **OK/MENU** and then selecting

Phone book → **Clear phone book**.

i NOTE

Deleting the car's telephone book only deletes contacts in the car's telephone book. Contacts in the mobile phone's phone book are not deleted.

Related information

- Audio and media - operating the system (p. 21)
- Bluetooth® handsfree phone* (p. 53)

Remote control*

The remote control can be used for all functions in the audio and media system. The remote control's buttons have the same functions as the buttons in the centre console or steering wheel keypad*.



1 Corresponds to **TUNE** in the centre console.

When using the remote control, first press the remote control's button **L F R** to position **F**. Then

aim the remote control at the IR receiver, which is located to the right of the **INFO** button (p. 21) in the centre console.

WARNING

Keep loose objects such as mobile phones, cameras, remote controls for accessories, etc. in the glove compartment or other compartments. Otherwise they may injure people in the car in the event of sudden braking or a collision.

NOTE

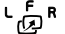




Do not expose the remote control to direct sunlight (e.g. on the instrument panel) - otherwise problems may arise with the batteries.






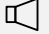



Related information

- Audio and media - operating the system (p. 21)

Remote control* - functions

Possible functions to be controlled using the remote control.

Key	Function
	Change between: L = Rear left display screen* F = Front display screen R = Rear right display screen*
NAV	Change to navigation*
RADIO	Change to radio source (e.g. FM1)
MEDIA	Change to media source (Disc, TV* etc.)
TEL	Change to Bluetooth® handsfree*
	Scroll/fast rewind, change track/song
	Play/pause
	Stop
	Scroll/fast forward, change track/song
DVD MENU	Menu

Key	Function
EXIT 	To previous, cancels function, deletes input characters
	Navigate up/down
	Navigate right/left
OK MENU 	Confirm selection or go to the menu system for the selected source
	Volume, decrease
	Volume, increase
0-9	Preset channels, number and letter input
FAV * 	Shortcuts for favourite setting
INFO # 	Information about the current programme, song, etc. Also used when there is more information available than can be shown in the display screen
	Selection of language for sound-track





Key	Function
	Subtitles, selection of language for text
	Teletext*, On/Off

Related information

- Audio and media - operating the system (p. 21)

Remote control* - battery replacement

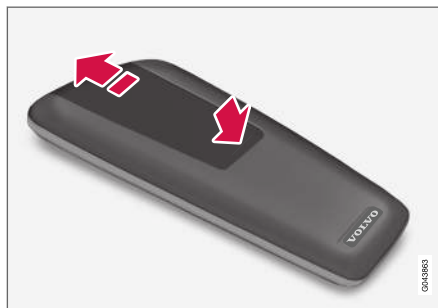
How to replace the batteries in the remote control for the audio and media system.

NOTE

Battery life is normally 1-4 years and depends on how much the remote control is used.

The remote control is powered by four batteries of the AA/LR6 type.

Take along extra batteries for a long journey.



1. Push down the catch on the battery cover and slide the battery cover in the direction of the infrared lens.
2. Remove the used batteries, turn the new batteries in accordance with the symbols in the battery compartment and fit them.

3. Refit the cover.

NOTE

Be sure to dispose of the exhausted batteries in an environmentally safe manner.

Audio and media - menu overview

Overview of possible options and settings in the audio and media system menus.

RADIO

- AM (p. 65)²⁰
- FM (p. 65)
- DAB (p. 66)

MEDIA

- CD Audio (p. 67)
- CD/DVD Data (p. 67)
- DVD Video (p. 68)
- iPod®(p. 68)
- USB (p. 69)
- Media Bluetooth®(p. 69)
- AUX (p. 70)

TEL

- Bluetooth handsfree®(p. 70)

Related information

- Audio and media - operating the system (p. 21)

Menu overview - AM

Overview of possible options and settings for AM radio.

Main menu AM ^A	See page
Show presets*	(p. 31)
Audio settings See footnote ^B	(p. 27)
Sound stage*	(p. 27)
Equalizer*	(p. 27)
Volume compensation	(p. 28)
Reset all audio settings	(p. 26)

^A Does not apply to the V60 Twin Engine and S60L Twin Engine.

^B The menu options for audio settings are the same for all audio sources.

Related information

- Audio and media - menu overview (p. 65)

Menu overview - FM

Overview of possible options and settings for FM radio.

Main menu FM1/FM2	See page
TP	(p. 33)
Show radio text	(p. 34)
Show presets*	(p. 31)
News settings	(p. 33)
Advanced settings	
REG	(p. 35)
Alternative frequency	(p. 35)
EON	(p. 33)
Set TP favourite	(p. 33)
PTY settings	(p. 34)
Reset all FM settings	(p. 35)

²⁰ Does not apply to the V60 Twin Engine and S60L Twin Engine.



◀◀ Audio settings	(p. 26)
Sound stage*	(p. 27)
Equalizer*	(p. 27)
Volume compensation	(p. 28)
Reset all audio settings	(p. 26)

Related information

- Audio and media - menu overview (p. 65)

Menu overview - Digital radio (DAB)*

Overview of possible options and settings for DAB radio.

Main menu DAB1*/DAB2*	See page
Ensemble learn	(p. 36)
PTY filtering	(p. 34)
Turn off PTY filtering	(p. 34)
Show presets*	(p. 31)
Advanced settings	
DAB linking	(p. 37)
DAB band	(p. 37)
Sub channels	(p. 38)
Show PTY text	(p. 34)
Reset all DAB settings	(p. 38)
Audio settings	(p. 26)

Sound stage*	(p. 27)
Equalizer*	(p. 27)
Volume compensation	(p. 28)
Reset all audio settings	(p. 26)

Related information

- Audio and media - menu overview (p. 65)
- Audio and media - operating the system (p. 21)

Menu overview - CD Audio

Overview of possible options and settings for CD Audio.

Main menu CD Audio (Disc menu)	See page
Random	(p. 42)
Scan	(p. 41)
Audio settings	(p. 26)
Sound stage*	(p. 27)
Equalizer*	(p. 27)
Volume compensation	(p. 28)
Reset all audio settings	(p. 26)

Related information

- Audio and media - menu overview (p. 65)
- Audio and media - operating the system (p. 21)

Menu overview - CD/DVD* Data

Overview of possible options and settings for CD/DVD Data.

Main menu CD/DVD Data (Disc menu)	See page
Play	(p. 39)
Pause	(p. 39)
Stop	(p. 39)
Random	(p. 42)
Repeat folder	(p. 40)
Change subtitles	(p. 39)
Change audio track	(p. 39)
Scan	(p. 41)
Audio settings	(p. 26)
Sound stage*	(p. 27)
Equalizer*	(p. 27)

Volume compensation	(p. 28)
Reset all audio settings	(p. 26)

Related information

- Audio and media - menu overview (p. 65)
- Audio and media - operating the system (p. 21)

Menu overview - DVD* Video

Overview of possible options and settings for DVD Video.

Main menu DVD Video (Disc menu)	See page
DVD disc menu	(p. 42)
Play/Pause/Continue	(p. 42)
Stop	(p. 42)
Subtitles	(p. 42)
Audio tracks	(p. 42)
Advanced settings	
Angle	(p. 43)
DivX® VOD code	(p. 43)
Audio settings	(p. 26)
Sound stage*	(p. 27)
Equalizer*	(p. 27)

Volume compensation	(p. 28)
Reset all audio settings	(p. 26)

Pop-up menu^A video and TV*

Press **OK/MENU** when a video file is being played back or TV* is being shown in order to access the pop-up menu.

Image settings	(p. 44)
Source menu	(p. 21)
See footnote ^B	
DVD disc menu	(p. 42)
See footnote ^C	
DVD disc TOP menu ^C	(p. 42)

^A Only applies when playing back videos or displaying TV.

^B What is shown in the pop-up menu for the source menu depends on what is being played back or displayed, it can be e.g. CD/DVD data menu or USB menu.

^C Only applies to DVD video discs.

Related information

- Audio and media - menu overview (p. 65)
- Audio and media - operating the system (p. 21)

Menu overview - iPod®*

Overview of possible options and settings for iPod®.

Main menu iPod	See page
Random	(p. 42)
Scan	(p. 41)
Audio settings	(p. 26)
Sound stage*	(p. 27)
Equalizer*	(p. 27)
Volume compensation	(p. 28)
Reset all audio settings	(p. 26)

Related information

- Audio and media - menu overview (p. 65)
- Audio and media - operating the system (p. 21)

Menu overview - USB*

Overview of possible options and settings for USB.

Main menu USB	See page
Play	(p. 47)
Pause	(p. 47)
Stop	(p. 47)
Random	(p. 42)
Repeat folder	(p. 47)
Select USB device	(p. 45)
Change subtitles	(p. 47)
Change audio track	(p. 47)
Scan	(p. 41)
Audio settings	(p. 26)
Sound stage*	(p. 27)
Equalizer*	(p. 27)

Volume compensation	(p. 28)
Reset all audio settings	(p. 26)

Related information

- Audio and media - menu overview (p. 65)
- Audio and media - operating the system (p. 21)

Menu overview - Media Bluetooth®*

Overview of possible options and settings for Media Bluetooth®.

Main menu Media Bluetooth®	See page
Random	(p. 42)
Change device	(p. 52)
Remove Bluetooth device	(p. 53)
Scan	(p. 41)
Bluetooth software version in car	(p. 56)
Audio settings	(p. 26)
Sound stage*	(p. 27)
Equalizer*	(p. 27)
Volume compensation	(p. 28)
Reset all audio settings	(p. 26)

Related information

- Audio and media - menu overview (p. 65)
- Audio and media - operating the system (p. 21)

Menu overview - AUX

Overview of possible options and settings for AUX.

Main menu AUX	See page
AUX input volume	(p. 48)
Audio settings	(p. 26)
Sound stage*	(p. 27)
Equalizer*	(p. 27)
Volume compensation	(p. 28)
Reset all audio settings	(p. 26)

Related information

- Audio and media - menu overview (p. 65)
- Audio and media - operating the system (p. 21)

Menu overview - Bluetooth® handsfree*

Overview of possible options and settings for Bluetooth® handsfree.

Main menu Bluetooth® handsfree (Phone menu)	See page
All calls	(p. 55)
All calls	(p. 55)
Missed calls	(p. 55)
Answered calls	(p. 55)
Dialled calls	(p. 55)
Call duration	(p. 55)
Phone book	(p. 57)
Search	(p. 59)
New contact	(p. 60)
Speed dials	(p. 61)

Receive vCard	(p. 61)
Memory status	(p. 61)
Clear phone book	(p. 62)
Change phone	(p. 52)
Remove Bluetooth device	(p. 53)
Phone settings	
Discoverable	(p. 50)
Sounds and volume	(p. 56)
Download phone book	(p. 57)
Bluetooth software version in car	(p. 56)
Call options	
Auto answer	(p. 55)

Vicemail number	(p. 55)
Disconnect phone	(p. 52)

Related information

- Audio and media - menu overview (p. 65)
- Audio and media - operating the system (p. 21)

Licenses

A license is an agreement for the right to operate a certain activity or the right to use someone else's entitlement according to the terms and conditions in the agreement. The following text is Volvo's agreement with the manufacturer/developer.

Sensus software

This software uses parts of sources from clib2 and Prex Embedded Real-time OS - Source (Copyright (c) 1982, 1986, 1991, 1993, 1994), and Quercus Robusta (Copyright (c) 1990, 1993), The Regents of the University of California. All or some portions are derived from material licensed to the University of California by American Telephone and Telegraph Co. or Unix System Laboratories, Inc. and are reproduced herein with the permission of UNIX System Laboratories, Inc. Redistribution and use in source and binary forms, with or without modification, are permitted provided that the following conditions are met: Redistributions of source code must retain the above copyright notice, this list of conditions and the following disclaimer. Redistributions in binary form must reproduce the above copyright notice, this list of conditions and the following disclaimer in the documentation and/or other materials provided with the distribution. Neither the name of the <ORGANIZATION> nor the names of its contributors may be used to endorse or promote

products derived from this software without specific prior written permission. THIS SOFTWARE IS PROVIDED BY THE COPYRIGHT HOLDERS AND CONTRIBUTORS "AS IS" AND ANY EXPRESS OR IMPLIED WARRANTIES, INCLUDING, BUT NOT LIMITED TO, THE IMPLIED WARRANTIES OF MERCHANTABILITY AND FITNESS FOR A PARTICULAR PURPOSE ARE DISCLAIMED. IN NO EVENT SHALL THE COPYRIGHT OWNER OR CONTRIBUTORS BE LIABLE FOR ANY DIRECT, INDIRECT, INCIDENTAL, SPECIAL, EXEMPLARY, OR CONSEQUENTIAL DAMAGES (INCLUDING, BUT NOT LIMITED TO, PROCUREMENT OF SUBSTITUTE GOODS OR SERVICES; LOSS OF USE, DATA, OR PROFITS; OR BUSINESS INTERRUPTION) HOWEVER CAUSED AND ON ANY THEORY OF LIABILITY, WHETHER IN CONTRACT, STRICT LIABILITY, OR TORT (INCLUDING NEGLIGENCE OR OTHERWISE) ARISING IN ANY WAY OUT OF THE USE OF THIS SOFTWARE, EVEN IF ADVISED OF THE POSSIBILITY OF SUCH DAMAGE.

This software is based in part on the work of the Independent JPEG Group.

This software uses parts of sources from "libtess". The Original Code is: OpenGL Sample Implementation, Version 1.2.1, released January 26, 2000, developed by Silicon Graphics, Inc. The Original Code is Copyright (c) 1991-2000 Silicon Graphics, Inc. Copyright in any portions created by third parties is as indicated elsewhere herein.



◀ All Rights Reserved. Copyright (C) [1991-2000] Silicon Graphics, Inc. All Rights Reserved. Permission is hereby granted, free of charge, to any person obtaining a copy of this software and associated documentation files (the "Software"), to deal in the Software without restriction, including without limitation the rights to use, copy, modify, merge, publish, distribute, sublicense, and/or sell copies of the Software, and to permit persons to whom the Software is furnished to do so, subject to the following conditions: The above copyright notice including the dates of first publication and either this permission notice or a reference to <http://oss.sgi.com/projects/FreeB/> shall be included in all copies or substantial portions of the Software. THE SOFTWARE IS PROVIDED "AS IS", WITHOUT WARRANTY OF ANY KIND, EXPRESS OR IMPLIED, INCLUDING BUT NOT LIMITED TO THE WARRANTIES OF MERCHANTABILITY, FITNESS FOR A PARTICULAR PURPOSE AND NONINFRINGEMENT. IN NO EVENT SHALL SILICON GRAPHICS, INC. BE LIABLE FOR ANY CLAIM, DAMAGES OR OTHER LIABILITY, WHETHER IN AN ACTION OF CONTRACT, TORT OR OTHERWISE, ARISING FROM, OUT OF OR IN CONNECTION WITH THE SOFTWARE OR THE USE OR OTHER DEALINGS IN THE SOFTWARE. Except as contained in this notice, the name of Silicon Graphics, Inc. shall not be used in advertising or otherwise to promote the sale, use or other dealings in this Software

without prior written authorization from Silicon Graphics, Inc.

This software is based in parts on the work of the FreeType Team.

This software uses parts of SSLeay Library: Copyright (C) 1995-1998 Eric Young (eay@cryptsoft.com). All rights reserved

DivX®



DivX Certified® to play DivX® video. DivX®, DivX Certified® and associated logos are registered trademarks of DivX, Inc. and are used under license. ABOUT DIVX VIDEO: DivX® is a digital video format created by DivX, Inc. This is an official DivX Certified device that plays DivX video. Visit www.divx.com for more information and software tools to convert your files into DivX video.

ABOUT DIVX VIDEO-ON-DEMAND: This DivX Certified® device must be registered in order to play DivX Video-on-Demand (VOD) content. To generate the registration code, locate the DivX

VOD section in the device setup menu. Go to <http://vod.divx.com> with this code to complete the registration process and learn more about DivX VOD. Covered by one or more of the following U.S. Patents: 7,295,673; 7,460,668; 7,515,710; 7,519,274.

Related information





- Volvo Sensus (p. 6)

Type approval

Type approval for Bluetooth® module can be read in the table.

« Declaration of Conformity for Bluetooth® module

Country/ Area	
Countries in the EU:	 Exporting country: Japan Manufacturer: Alpine Electronics Inc. Type of equipment: Bluetooth® device For further information visit http://ec.europa.eu/enterprise/rtte/faq.htm #informing

Country/ Area		
	 <p style="text-align: right; font-size: small;">ALPINE ELECTRONICS, INC. 20-1, Yoshitama-Kogyoshauchi, Inada-cho, Fukuoka-shi 815-1192 Japan Phone: (+81) 248-36-4111 Fax: (+81) 248-36-4300</p> <p style="text-align: center;">DECLARATION of CONFORMITY</p> <p>We, Alpine Electronics, Inc., 20-1, Yoshitama-Kogyoshauchi, Inada-cho, Fukuoka-shi 815-1192 Japan declare under our sole responsibility that the product:</p> <p>Product : Bluetooth Module Model/Type : IAM2.1 BT PWB E33</p> <p>to which this declaration refers is in conformity with the essential requirements and other relevant requirements of the R&TTE Directive (1999/5/EC). The product is in conformity with the following standards:</p> <p>RADIO : EN 300 328 V1.3.1 (2006-10) EMC : EN 301 489-17 V2.3.1 (2009-05) EN 301 489-3 V1.3.1 (2008-04) EN 50145-2, 2004 SAFETY : IEC 60945 Ed.7, 2001 + AmA.1, 2005 EN60945: 2002 + AmA.1, 2006 + AmA.2, 2010</p>  <p>Date : April 4, 2012</p> <p>Signature: <i>Izumiya Takahisa</i></p> <p>Name : Izumiya Takahisa</p>	 <p style="text-align: right; font-size: small;">ALPINE ELECTRONICS, INC. 20-1, Yoshitama-Kogyoshauchi, Inada-cho, Fukuoka-shi 815-1192 Japan Phone: (+81) 248-36-4111 Fax: (+81) 248-36-4300</p> <p style="text-align: center;">DECLARATION of CONFORMITY</p> <p>We, Alpine Electronics, Inc., 20-1, Yoshitama-Kogyoshauchi, Inada-cho, Fukuoka-shi 815-1192 Japan declare under our sole responsibility that the product:</p> <p>Product : Bluetooth Module Model/Type : IAM2.1 BT PWB E34</p> <p>to which this declaration refers is in conformity with the essential requirements and other relevant requirements of the R&TTE Directive (1999/5/EC). The product is in conformity with the following standards:</p> <p>RADIO : EN 300 328 V1.3.1 (2006-10) EMC : EN 301 489-17 V2.3.1 (2009-05) EN 301 489-3 V1.3.1 (2008-04) EN 50145-2, 2004 SAFETY : IEC 60945 Ed.7, 2001 + AmA.1, 2005 EN60945: 2002 + AmA.1, 2006 + AmA.2, 2010</p>  <p>Date : April 4, 2012</p> <p>Signature: <i>Izumiya Takahisa</i></p> <p>Name : Izumiya Takahisa</p> <p style="text-align: right; font-size: x-small;">0347205</p>
Czech Republic:	Alpine Electronics, Inc. tímto prohlašuje, že tento Bluetooth® Module je ve shodě se základními požadavky a dalšími příslušnými ustanoveními směrnice 1999/5/ES.	
Denmark:	Undertegnede Alpine Electronics, Inc. erklærer herved, at følgende udstyr Bluetooth® Module overholder de væsentlige krav og øvrige relevante krav i direktiv 1999/5/EF.	
Germany:	Hiermit erklärt Alpine Electronics, Inc., dass sich das Gerät Bluetooth® Module in Übereinstimmung mit den grundlegenden Anforderungen und den übrigen einschlägigen Bestimmungen der Richtlinie 1999/5/EG befindet.	



Country/ Area	
Estonia:	Käesolevaga kinnitab Alpine Electronics, Inc. seadme Bluetooth® Module vastavust direktiivi 1999/5/EÜ põhinõuetele ja nimetatud direktiivist tulenevatele teistele asjakohastele sätetele.
UK:	Hereby, Alpine Electronics, Inc., declares that this Bluetooth® Module is in compliance with the essential requirements and other relevant provisions of Directive 1999/5/EC.
Spain:	Por medio de la presente Alpine Electronics, Inc. declara que el Bluetooth® Module cumple con los requisitos esenciales y cualesquiera otras disposiciones aplicables o exigibles de la Directiva 1999/5/CE.
Greece:	ΜΕ ΤΗΝ ΠΑΡΟΥΣΑ Alpine Electronics, Inc. ΔΗΛΩΝΕΙ ΟΤΙ Bluetooth® Module ΣΥΜΜΟΡΦΩΝΕΤΑΙ ΠΡΟΣ ΤΙΣ ΟΥΣΙΩΔΕΙΣ ΑΠΑΙΤΗΣΕΙΣ ΚΑΙ ΤΙΣ ΛΟΙΠΕΣ ΣΧΕΤΙΚΕΣ ΔΙΑΤΑΞΕΙΣ ΤΗΣ ΟΔΗΓΙΑΣ 1999/5/ΕΚ.
France:	Par la présente Alpine Electronics, Inc. déclare que l'appareil Bluetooth® Module est conforme aux exigences essentielles et aux autres dispositions pertinentes de la directive 1999/5/CE.
Italy:	Con la presente Alpine Electronics, Inc. dichiara che questo Bluetooth® Module è conforme ai requisiti essenziali ed alle altre disposizioni pertinenti stabilite dalla direttiva 1999/5/CE.
Latvia:	Ar šo Alpine Electronics, Inc. deklarē, ka Bluetooth® Module atbilst Direktīvas 1999/5/EK būtiskajām prasībām un citiem ar to saistītajiem noteikumiem.
Lithuania:	Šiuo Alpine Electronics, Inc. deklaruoja, kad šis Bluetooth® Module atitinka esminius reikalavimus ir kitas 1999/5/EB Direktyvos nuostatas.
Netherlands:	Hierbij verklaart Alpine Electronics, Inc. dat het toestel Bluetooth® Module in overeenstemming is met de essentiële eisen en de andere relevante bepalingen van richtlijn 1999/5/EG.
Malta:	Hawnhekk, Alpine Electronics, Inc., jiddikjara li dan Bluetooth® Module jikkonforma mal-htigijiet essenzjali u ma provvedimenti oħrajn rilevanti li hemm fid-Dirrettiva 1999/5/EC.
Hungary:	Alulírott, Alpine Electronics, Inc. nyilatkozom, hogy a Bluetooth® Module megfelel a vonatkozó alapvető követelményeknek és az 1999/5/EC irányelv egyéb előírásainak.

Country/ Area	
Poland:	Niniejszym Alpine Electronics, Inc. oświadcza, że Bluetooth® Module jest zgodny z zasadniczymi wymogami oraz pozostałymi stosownymi postanowieniami Dyrektywy 1999/5/EC.
Portugal:	Alpine Electronics, Inc. declara que este Bluetooth® Module está conforme com os requisitos essenciais e outras disposições da Directiva 1999/5/CE.
Slovenia:	Alpine Electronics, Inc. izjavlja, da je ta Bluetooth® Module v skladu z bistvenimi zahtevami in ostalimi relevantnimi določili direktive 1999/5/ES.
Slovakia:	Alpine Electronics, Inc. týmto vyhlasuje, že Bluetooth® Module spĺňa základné požiadavky a všetky príslušné ustanovenia Smernice 1999/5/ES.
Finland:	Alpine Electronics, Inc. vakuuttaa täten että Bluetooth® Module tyyppinen laite on direktiivin 1999/5/EY oleellisten vaatimusten ja sitä koskevien direktiivin muiden ehtojen mukainen.
Sweden:	Härmed intygar Alpine Electronics, Inc. att denna Bluetooth® Module står i överensstämmelse med de väsentliga egenskapskrav och övriga relevanta bestämmelser som framgår av direktiv 1999/5/EG.
Iceland:	Alpine Electronics, Inc. hereby certifies that this Bluetooth® Module conforms to the essential characteristic requirements and other relevant regulations of directive 1999/5/EC.
Norway:	Alpine Electronics, Inc. erklærer herved at utstyret Bluetooth® Module er i samsvar med de grunnleggende krav og øvrige relevante krav i direktiv 1999/5/EF.




Country/ Area	
China:	<p>第十三条 进口和生产厂商在其产品的说明书或使用手册中，应刊印下述有关内容：</p> <ol style="list-style-type: none"> 1. 标明附件中所规定的技术指标和使用范围，说明所有控制、调整及开关等使用方法； <ul style="list-style-type: none"> ■ 使用频率：2.4 - 2.4835 GHz ■ 等效全向辐射功率(EIRP)：天线增益 < 10dBi 时：≤100 mW 或 ≤20 dBm ① ■ 最大功率谱密度：天线增益 < 10dBi 时：≤20 dBm / MHz (EIRP) ① ■ 载频容限：20 ppm ■ 杂散发射(辐射)功率(对应载波±2.5 倍信道带宽以外)： <ul style="list-style-type: none"> • ≤-36 dBm / 100 kHz (30 - 1000 MHz) • ≤-33 dBm / 100 kHz (2.4 - 2.4835 GHz) • ≤-40 dBm / 1 MHz (3.4 - 3.53 GHz) • ≤-40 dBm / 1 MHz (5.725 - 5.85 GHz) • ≤-30 dBm / 1 MHz (其它 1 - 12.75 GHz) 2. 不得擅自更改发射频率、加大发射功率(包括额外加装射频功率放大器)，不得擅自外接天线或改用其它发射天线； 3. 使用时不得对各种合法的无线电通信业务产生有害干扰；一旦发现有害干扰现象时，应立即停止使用，并采取措施消除干扰后方可继续使用； 4. 使用微功率无线电设备，必须忍受各种无线电业务的干扰或工业、科学及医疗应用设备的辐射干扰； 5. 不得在飞机和机场附近使用。

Country/ Area	
Taiwan:	<p>低效率電波輻射性電機管理辦法第十條 第十二條 經型式認證合格之低功率射頻電機，非經許可，公司、商號或使用者均不得擅自 變更頻率、加大功率或變更原設計之特性及功能。 第十四條 低功率射頻電機之使用不得影響飛航安全及干擾合法通信；經發現有干擾現象時， 應立即停用，並改善至無干擾時方得繼續使用。前項合法通信，指依電信法規定 作業之無線電通信。低功率射頻電機須忍受合法通信或工業、科學及醫療用電波 輻射性電機設備之干擾。</p> <div data-bbox="217 443 978 589">The logo consists of a stylized graphic of four curved lines on the left, followed by the alphanumeric string "CCAB 11LP4080T3" in a bold, sans-serif font.</div> <div data-bbox="217 611 978 757">The logo consists of a stylized graphic of four curved lines on the left, followed by the alphanumeric string "CCAB 11LP4070T0" in a bold, sans-serif font.</div>



Country/ Area	
South Korea:	<p>제품 정보</p> <p>Volvo Car Korea</p> <p>신청자 코드: KCC-CMM-N25-IAM21L3, KCC-CMM-N25-IAM21L2 and KCC-CMM-N25-IAM21L1</p> <p>제품 명: Bluetooth Audio Navigation Radio</p> <p>모델 명: IAM2.1</p> <p>산 날짜: March/2010</p> <p>Alpine Electronics, Inc</p> <p>Made in Japan</p> <p>고객 정보</p> <p>Volvo Car Korea</p> <p>볼보자동차코리아</p> <p>서울시 용산구 한남2동 726-173 볼보빌딩 4층</p> <p>볼보자동차 고객센터 1588-1777</p> <p>http://www.volvocars.com/kr</p> <p>사용자 주의사항</p> <p>※ 당해 무선설비는 전파혼신 가능성이 있으므로 인명안전과 관련된 서비스는 할 수 없습니다</p> <div data-bbox="220 823 363 968" style="border: 1px solid black; padding: 5px; text-align: center;">  </div>

Country/ Area																		
The United Arab Emirates:	<table border="1"> <tr> <td>TRA REGISTERED</td> <td>No:</td> </tr> <tr> <td>ER0071020/11</td> <td></td> </tr> <tr> <td>DEALER</td> <td>No:</td> </tr> <tr> <td>DA0042125/10</td> <td></td> </tr> </table>	TRA REGISTERED	No:	ER0071020/11		DEALER	No:	DA0042125/10		<table border="1"> <tr> <td>TRA REGISTERED</td> <td>No:</td> </tr> <tr> <td>ER0071017/11</td> <td></td> </tr> <tr> <td>DEALER</td> <td>No:</td> </tr> <tr> <td>DA0042125/10</td> <td></td> </tr> </table>	TRA REGISTERED	No:	ER0071017/11		DEALER	No:	DA0042125/10	
TRA REGISTERED	No:																	
ER0071020/11																		
DEALER	No:																	
DA0042125/10																		
TRA REGISTERED	No:																	
ER0071017/11																		
DEALER	No:																	
DA0042125/10																		
South Africa:																		
Jamaica:	Approved for use in Jamaica SMA EI: IAM2.1																	
Thailand:	This telecommunication equipment conforms to NTC technical requirement.																	
Oman	<table border="1"> <tr> <td>OMAN - TRA</td> </tr> <tr> <td>R/0281/11</td> </tr> <tr> <td>D090258</td> </tr> </table>	OMAN - TRA	R/0281/11	D090258	<table border="1"> <tr> <td>OMAN - TRA</td> </tr> <tr> <td>R/0262/11</td> </tr> <tr> <td>D090258</td> </tr> </table>	OMAN - TRA	R/0262/11	D090258										
OMAN - TRA																		
R/0281/11																		
D090258																		
OMAN - TRA																		
R/0262/11																		
D090258																		

ALPHABETICAL INDEX

A

Alarm for accidents and disasters	32
Audio	
settings	26
surround	20, 26
Audio and media	
introduction	20
manage the system	21
menu overview	65
menus	21
overview	20
Audio profile	27
audio system	
functions	26
overview	20
Audio system	20
Audio volume	21
external audio source	48
phone	56
phone/media player	56
ring signal, phone	56
speed/noise compensation	28
AUX input	20, 45

B

Battery	
remote control	64
Bluetooth®	
handsfree	53
media	49
microphone off	55
streaming audio	49
transfer call to mobile	55

C

Calls	
incoming	53
operation	53
CD	39
Controls	
centre console	21

D

DAB Radio	28, 36
Digital radio (DAB)	36
DVD	39

E

Equalizer	27
-----------	----

I

Image settings	44
Infotainment system	
source buttons	21
Infotainment system (Audio and media)	20
iPod®, connection	46

K

Keypad in the steering wheel	21
------------------------------	----

M

Making calls	53
Media, Bluetooth®	49
Media player	38
compatible file formats	44
Menu navigation audio and media	21
Microphone	54

ALPHABETICAL INDEX

Mobile phone	
connect	50
handsfree	53
register phone	50
MY CAR	10
car settings	13
climate settings	17
driver support system	14
information	17
menu Option	11
search paths	11
system settings	16

N

News broadcasts	33
Normal view	21

P

Phone	
connect	50
handsfree	53
incoming call	53
making calls	53
phone book	57
phone book, shortcut	57

receiving a call	55
register phone	50

R

Radio	28
DAB	28, 36
Radio programme types (PTY)	34
RDS	32
Remote control	62
battery replacement	64

S

Sensus	6
Signal input, external	20, 45
Steering wheel	
keypad	21
Support	7
surround	20, 26

T

Traffic information (TP)	33
Type approval	
Bluetooth®	73

U

USB, connection	46
USB input	45

V

Volvo Sensus	6
--------------	---

V O L V O