



VOLVO V70 & XC70  
**QUICK GUIDE**

WEB EDITION



## **WELCOME TO YOUR NEW VOLVO!**

Getting to know your car is an exciting experience.


After looking through this Quick Guide you'll like your new Volvo even more. You can find detailed information in the Owner's Manual.


Warning texts and other important information are only available in the Owner's Manual, not in this folder. The Owner's Manual contains the most up-to-date information.


Options are marked with an asterisk (\*).


At [www.volvocars.com](http://www.volvocars.com) you will find further information relating to your car.




 **Locks the doors** and tailgate and arms the alarm\*.

 **Unlocks the doors<sup>A</sup>** and tailgate and disarms the alarm.

 **Unlocks the tailgate** – this does not open.

 **Approach lighting** in side mirrors\*, in the passenger compartment, at floor level and at the numberplate. Direction indicators and parking lamps come on.

 **"Panic" button.** Held down for approx. 3 seconds in an emergency to trigger the alarm.

<sup>A</sup> Automatic relocking takes place if a door/tailgate is not opened within 2 minutes after unlocking.

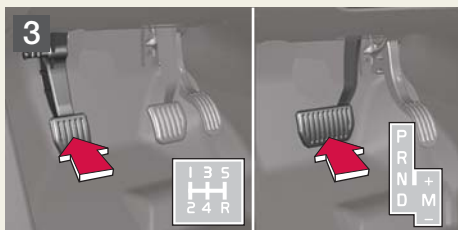
**START**



Insert the remote key in the ignition switch.



Press gently on the remote key, which is then pulled in.



Depress the clutch or brake pedal.



Press the **START/STOP/ENGINE** button to start the engine<sup>B</sup>.

<sup>B</sup> The idling speed may be slightly higher for a short time during cold starting.

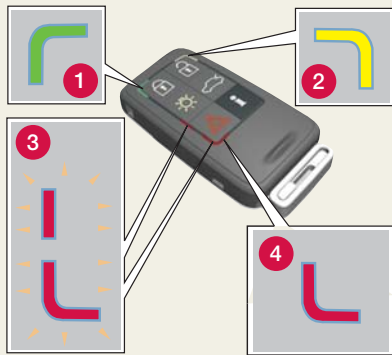
**SWITCH OFF THE ENGINE AND REMOVE THE REMOTE KEY**



Park the car and press the **START/STOP/ENGINE** button to switch off the engine.



Press gently on the remote key, which is then pushed out. The automatic transmission must be in **P** position.



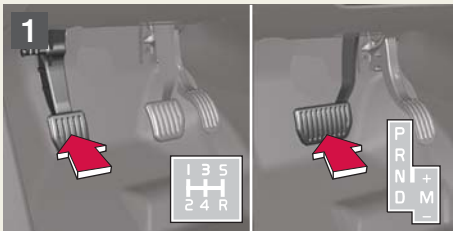
**i Information** on the car can be obtained within a radius of 20 m.

- Press the button and wait 7 seconds.

Pressing the button out of range shows the last status stored in the memory.

- 1 Green light:** The car is locked.
- 2 Yellow light:** The car is unlocked.
- 3 Flashing alternating red light:** Someone may be inside the car.
- 4 Red light:** The alarm has been triggered.

### STARTING WITH KEYLESS DRIVE



Get into the car with the PCC in your pocket, for example.

**Depress the clutch or brake pedal.**

<sup>A</sup> The idling speed may be slightly higher for a short time during cold starting.



Press the **START/STOP/ENGINE** button to start the engine<sup>A</sup>.

### SWITCHING OFF THE ENGINE



Park the car and press the **START/STOP/ENGINE** button to switch off the engine.

### **!** IMPORTANT

With keyless drive the PCC only needs to be inside the car. Keep it in your pocket for example when you go to and from the car and while driving.

The car is unlocked when someone grips the outer handle of a door.

When parking the car after driving you only need to press the button on the outside of the door to lock the car.

### LEATHER CARE



Leather upholstery requires regular cleaning. Treat with leather care products, 1–4 times a year or as required. Leather care products are available from your Volvo dealer.

### BLIS – BLIND SPOT INFORMATION SYSTEM\*



If the BLIS' indicator lamp illuminates despite there being no vehicle within the blind spot, the cause could be for example, reflection from shiny wet road surface or low sun in the camera. In the event of a direct fault in the system the display shows the text **Blind spot syst. Service required**



### 1 Press for ON/OFF

#### Turn to adjust the volume

Radio, TP, Handsfree\* and RTI volume are stored individually for the next time they are used.

### 2 Select AM, FM1, FM2, CD or MODE.

Use MODE to activate AUX<sup>^</sup> and to adjust the AUX audio source volume.

### 3 Set the sound pattern

Press the button to select BASS, TREBLE, FADER, BALANCE, Dolby Pro Logic II\* or SUBWOOFER\*.

Turn the control to adjust.

<sup>^</sup> AUX input for e.g. MP3 player (set volume at medium for optimum audio reproduction).

## RADIO

### 3 Turn to select radio station

4 Search station with left/right arrow. Store up to 20 stations by holding down 0-9 on FM1 and 0-9 on FM2. When a station has been stored it is confirmed in the display.

### 5 Autostore the 10 strongest stations

Press in AUTO for approx. 2 seconds. Autostoring is shown in the display for as long as the search continues. Then select 0-9 to playback one of the stored radio stations.

## CD

4 Change CD track using Left/Right arrow or turn (3).

Select CD disc\* using Up/Down arrow.

### 6 CD eject

Press to eject current CD disc.

Keep the button depressed to eject all CD discs in the CD changer\*.

7 CD changer\*. Select CD disc 1-6.

## POWER OPERATED TAILGATE\*



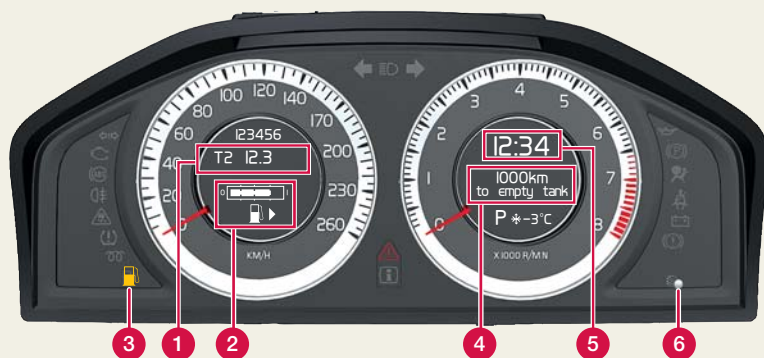
### Opening

Press the opening button to the right of the headlamp control or on the remote key button, or pull once on the outer handle of the tailgate.

### Closing

Depress the closing button on the tailgate or close manually.





### 1 Trip meter

The car is equipped with two independent trip meters, T1 and T2, which are always on. For switching between T1/T2 and resetting, see button (6).

### 2 Fuel gauge

The arrow shows which side the fuel filler cap is on.

### 3 Low fuel level

When this symbol is illuminated, the level in the fuel tank is low. Top up with fuel as soon as possible

### 4 Distance to empty tank

Turn the thumbwheel of the trip computer (8) to see approximately how far is left to drive before the tank is empty.

## ! IMPORTANT

"Kilometres to empty tank" is an estimate of the possible distance left to drive, based on earlier driving conditions.



### 5 Clock

Turn the control (6) clockwise or anticlockwise to set the clock.

### 6 Turn to display e.g. KILOMETRES TO EMPTY TANK in the display (4).

Turn to set the clock.

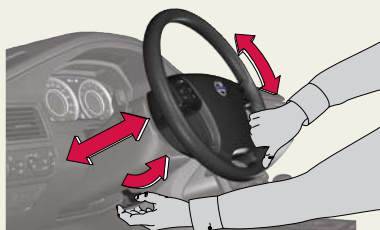
### 7 Press to read the messages in the display. Press again to turn off the message.

### 8 Trip computer

Select the required function using the thumbwheel.

### 9 Resets the current function in the trip computer.

## ADJUSTING THE STEERING WHEEL



**WARNING!** Adjust the steering wheel before starting to drive – never do this while driving.

## REFUELLING



Press the button to open the fuel filler flap.

## HEADLAMP CONTROL



**Main beam flash.**  
Switch between **main/dipped beam**.



**Display and instrument lighting**



**Fog lamps (front)**



**Fog lamps (rear, driver's side only)**



**Automatic dipped beam.** Main beam flash works but not fixed main beam.



**Parking lamps**



**Dipped beam.** Dipped beam switches off when the ignition is switched off. Main beam can be activated with the lever.



**Headlamp levelling, dipped beam.** Automatic function for Bi-Xenon® lights\*.

## DRIVER SUPPORT SYSTEM\*



To help the driver to brake in time, for example, keep a safe distance from other vehicles or maintain a good road position, the car may be fitted with a number of systems:

- Adaptive cruise control\*
- Distance control\*
- Collision warning with auto brake\*
- Driver Alert System\*

## BLUETOOTH\*



1. Makes mobile phone searchable/visible
2. Hold down the **PHONE** button on the audio system
3. Select **Add phone** from the audio system display
4. Select the phone you want to connect
5. Input the digits shown in the audio system display using the mobile phone's keypad

## RAIN SENSOR\* AND WINDSCREEN WIPERS



### RAIN SENSOR

- 1** Press to activate the rain sensor. Windscreen wipers in position **0** or **A**.
- 2** Thumbwheel – wiper frequency.
- 3** Rear window wiper intermittent/normal.



**Single sweep, windscreen wipers**



**Interval wiping.** Turn (B) to adjust.



**Normal speed**



**High speed**



**Windscreen and headlamp washing**



**Rear window washer**



**Display symbol** when rain sensor is on.

## KEY POSITIONS (0 & I)



The clutch/brake pedal must **not** be depressed.

### REMOTE KEY

Position 0



Position I



### KEYLESS DRIVE

Position I



Audio system and passenger compartment lighting operate irrespective of key position.

**0** Instrument/clock lighting, steering lock unlocks.

**I** Sunroof, window motors, fan, ECC, windscreen wipers, 12 V socket in central console, RTI.

## ADJUSTING THE FRONT SEAT



- 1 Lumbar support**
- 2 Backrest rake**
- 3 Raise/lower seat**
- 4 Seat cushion front edge raise/lower**
- 5 Forwards/backwards**

## PARKING BRAKE



### To apply

**1** Press the button.

**P** The lamp flashes until the parking brake is fully applied, after which the lamp stays on.

### To disengage

Key position **0** or **I**.

Depress the clutch or brake pedal.

**2** Pull out the button.

### Disengage automatically

- Select a gear and drive away.  
(For cars with an automatic gearbox, the driver has to be wearing the seat belt.)