



C30

QUICK GUIDE WEB EDITION



WELCOME TO YOUR NEW VOLVO!

Getting to know your new car is an exciting experience. Look through this Quick Guide in order to quickly and easily learn some of the most common functions.

All warning texts, and other important and detailed information, are only available in the owner's manual – this folder only contains a small selection.

In addition, the owner's manual contains the latest and most current information.

Options are marked with an asterisk (*).

There is further information concerning your car at www.volvocars.com

REMOTE CONTROL KEY



KEY BLADE

Used to lock/unlock the glovebox or the driver's door, e.g. if the car is without electrical power.



Locks doors and tailgate and arms the alarm*.



Unlocks the doors^A and tailgate, and disarms the alarm.



Unlocks the tailgate – it does not open.



Approach lighting. Switches on the lamps in the side mirrors*, the direction indicators and parking lamps, at the number plate, passenger compartment and floor.



Panic function. Held depressed for approx. 3 seconds in an emergency in order to trigger the alarm. Switch off by pressing once again after more than 5 seconds.

^A Automatic relocking takes place if a door/tailgate is not opened within 2 minutes after unlocking.

COLD START



NOTE

After a cold start the idling speed is high irrespective of the outside temperature. A period of raised idling speed is part of Volvo's efficient emissions system.

AUTOSTART*



Depress the clutch and/or brake and turn the remote control key/ignition dial to the end position III and release it directly – the engine starts automatically.

Diesel engines must always be preheated in key position II before they are started.

DIRECTION INDICATORS



A Short sequence – 3 flashes.

B Continuous flashing sequence.

ADJUSTING THE STEERING WHEEL










WARNING

Adjust the steering wheel before setting off – never while driving.

LIGHT SWITCHES

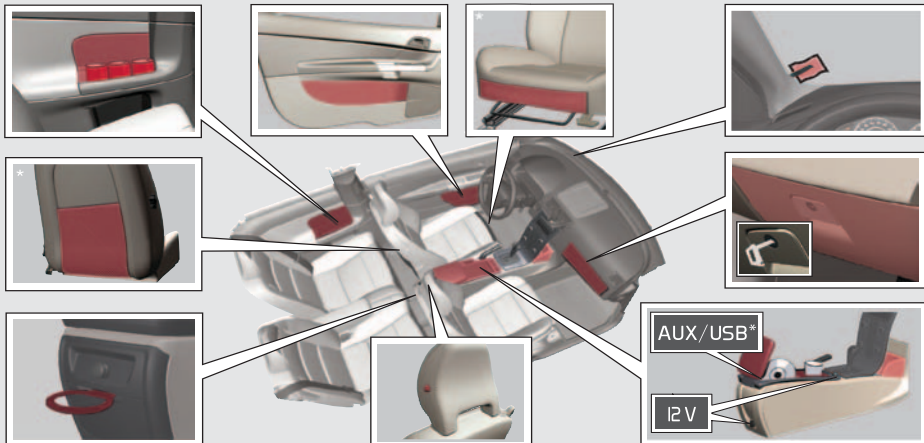


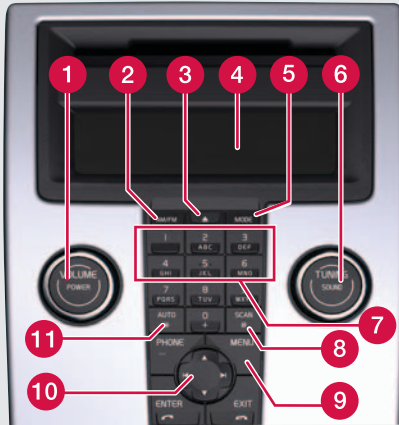
-  Manual headlamp levelling (automatic for Xenon lights*)
- 0** Automatic dipped beam. Main beam flash works but not the fixed main beam
-  Parking lamps
-  Dipped beam. Switches off when the engine is switched off. Main beam and main beam flash can be activated.
- A** Daytime running lights during daytime driving*. Active Bi-Xenon lights*, the headlamp pattern follows the movement of the steering wheel
-  Display and instrument lighting
-  Front fog lamps
-  Open the hatch for the fuel filler cap
-  Fog lamp (rear, only driver's side)
- A** Main beam flash and Home safe lighting
- B** Main/dipped beam switching

STORAGE SPACES, 12 V SOCKET & AUX/USB*



12 V sockets work in key position I or II.
Using the AUX/USB* output, the car's audio system can e.g. playback music from an MP3 player.





- 1 Press for On/Off. Turn to adjust the volume.
- 2 Radio **FM1**, **FM2** or **AM**.
- 4 Display
- 5 **MODE** – **CD**, **AUX** or **USB**^A.
- 6 Press to select sound pattern e.g. **BASS**, **DOLBY PRO LOGIC II*** or **SUBWOOFER*** – turn to adjust.
- 9 **MENU** – **AUX**, volume and advanced audio settings. Activate/deactivate **SUBWOOFER***.

RADIO

- 6 Turn to select the station.
- 8 Searches for the next strong station.
- 10 Search for station using Left/Right arrow. Store up to 20 stations by holding in **0–9** on **FM1** or **FM2** at the desired station until the display confirms the selection.
- 11 Press for about 2 seconds to autostore the 10 strongest stations. The display shows **AUTOSTORING** during the search. Select stored station with **0–9**.

CD PLAYER

- 3 One short press ejects the current disc. One long press ejects all discs^B.
- 6 Turn to change the track.
- 7 CD changer* – select disc with **1–6**.
- 10 Change CD tracks with left/right arrow. Select CD^B with up/down arrow.

^A AUX input for e.g. MP3 player (set its volume at medium for optimum audio reproduction).

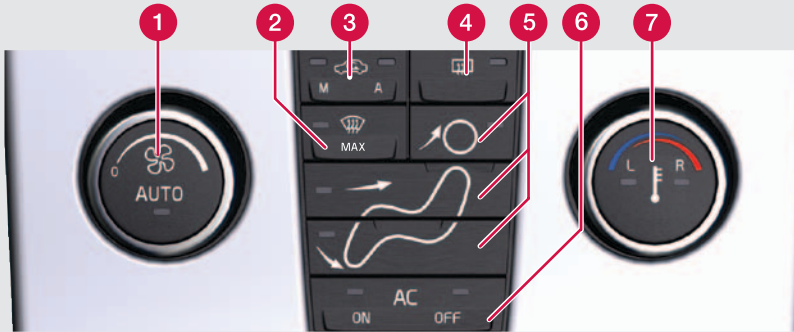
^B Only CD changer*.

WINDSCREEN WIPERS AND RAIN SENSOR*



- 1 Rain Sensor On/Off, with the lever in position 0.
- 2 Regulates the sensor sensitivity or the intermittent delay.
- 3 Wiper, rear window – intermittent/normal.

- A Single sweep
- 0 Off
- B Intermittent wiper, see also (2).
- C Normal sweep speed.
- D High sweep speed.
- E Washer, windscreen and headlamps.
- F Washer, rear window.
- Illuminates when the rain sensor is active.



AUTOMATIC CONTROL

In **AUTO** mode the ECC system controls all functions automatically making driving simpler with optimum air quality.

- 1 Press for automatic control of selected temperature and other functions.
- 7 Press for individual temperature left (**L**) or right-hand (**R**) side.
Turn for the desired temperature. The display shows the selected temperature.

MANUAL CONTROL

- 1 Turn to change the fan speed.
- 2 Max. defroster. Aim all air to the wind-screen and side windows with maximum airflow.
- 3 **M** – Recirculation On/Off.
A – Air quality system* On/Off.
- 4 Rear window and door mirror defrosters.
- 5 Air distribution.
- 6 **AC** – Air conditioning On/Off. Cools the passenger compartment and demists the windows.

DEACTIVATING THE AIRBAG – PACOS*



PACOS (Passenger Airbag Cut Off Switch)

Use the key blade to switch **ON/OFF**.

OFF – The airbag is deactivated.

PASSENGER AIRBAG OFF is shown in the warning lamp above the interior rearview mirror.

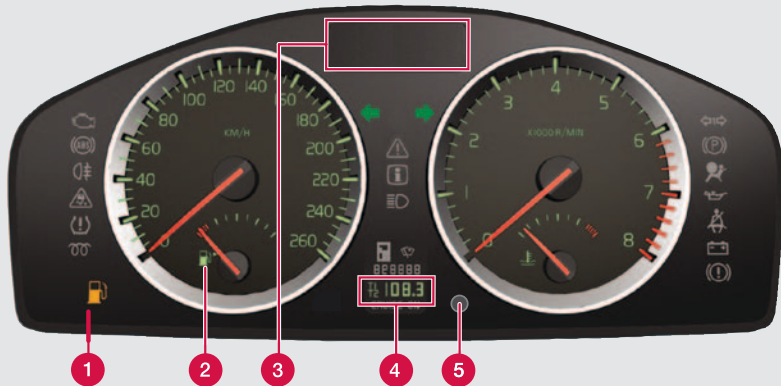
A child can sit on a booster cushion or child seat in the front seat but never passengers taller than 140 cm.

ON – The airbag is activated.

Passengers taller than 140 cm can sit in the front seat but never a child on a booster cushion or in a child seat.

WARNING

Incorrect use could endanger life. Consult the Owner's Manual if you have the slightest doubt about its use.



- 1 Low fuel level. When the symbol is illuminated, fill up with fuel as soon as possible.
- 2 Fuel gauge. The symbol's arrow points out the side on which the fuel cap is located.
- 3 Display for trip computer, messages, clock and outside temperature.
- 4 T1 & T2 – independent trip meters, which are always active.
- 5 One short press switches between T1 & T2.
One long press resets the current meter.
- 6 Press to show/clear message.
- 7 Turn to see the trip computer's options.
- 8 One short press resets the trip computer's current function.
One long press resets all trip computer functions.



- 3. Press **ENTER**.
- 4. Select the number with "arrow right" or "arrow left".
- 5. Adjust the clock with the numbers on the keypad or "arrow up" or "arrow down" on the navigation button.
- 6. Press **ENTER** to finish.

i NOTE

Display text --- **KILOMETRES TO EMPTY TANK** is an estimate of possible distance based on earlier driving conditions.

Clock, adjustment

- 1. On the centre console, press **MENU**.
- 2. Select **CLOCK ADJUST**.

BLIS – BLIND SPOT INFORMATION SYSTEM*



If the BLIS indicator lamp illuminates despite there being no vehicle within the blind spot, the cause could be, for example, reflection from shiny wet road surface, own shadow on light road surface or low sun in the camera.

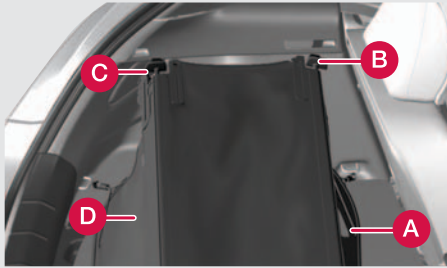
In the event of a direct fault in the system the display shows the text **BLIS SERVICE REQUIRED**.

DIESEL PARTICLE FILTER



In some circumstances, the instrument panel's display shows **SOOT FILTER FULL**. At which point the exhaust system's particle filter needs cleaning. This takes place automatically by driving for approx. 20 minutes at an even main road speed. When the message clears the so-called regeneration is complete.

CARGO COVER*



1. Secure the hooks at the floor (A).
2. Press together the spring-loaded rail and affix it in the brackets at (B) on both sides.
3. Affix the brackets at (C) in the same way.
4. Secure the hooks at (D).

Undo the attachment points (D) and if necessary (C) on both sides during loading.

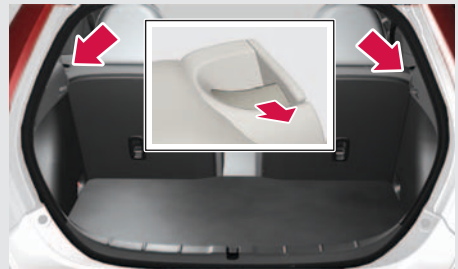
Undo (D), (C), (B) and (A), and roll up the cargo cover when not in use.

HOLDER FOR FLOOR HATCH



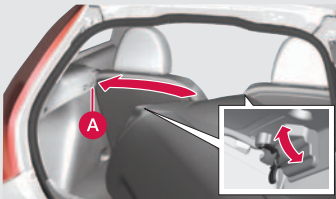
Floor hatch in open position without/with cargo cover.

LOWERING THE BACKREST



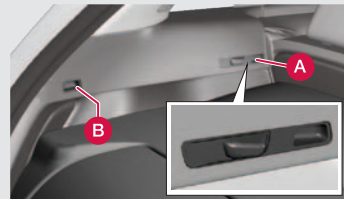
Pull up the lock catch and move the backrest forward.

CARGO COVER – HARD*



Attachment

1. Pull all four lock buttons backwards to their end positions.
2. Carefully lift in the cargo cover, position the front section in the two supports behind (A) on both sides.



3. Align one rear lock at (B) and press the lock button forwards.
4. Lock the three remaining ones in the same way.

Removal

Pull all four lock buttons backwards to their end positions – first (A), then (B) and lift out.

ADJUSTING THE FRONT SEAT



- 1 Lumbar support
- 2 Backrest rake.
- 3 Raise/lower seat.
- 4 Raise/lower the front edge of the seat cushion.
- 5 Forwards/backwards.
- 6 Entry to the rear seat.

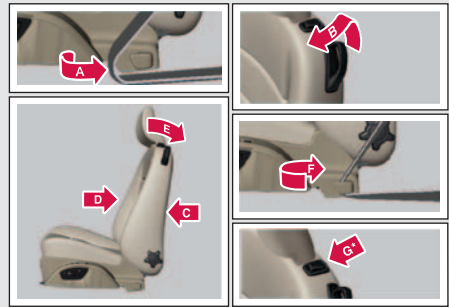
REMOTE CONTROL KEY AND POWER DRIVER'S SEAT*

All remote control keys can be used by different drivers to store the settings for the driver's seat. Proceed as follows:

- Adjust the seat as you want it.
- Lock the car by pressing the lock button on the remote control key that you normally use. This stores the seat's position in the remote control key's memory ^A.
- Unlock the car (by pressing the unlock button on the **same** remote control key) and open the driver's door. The driver's seat will automatically adopt the position that is stored in the remote control key's memory (if the seat has been moved since you locked the car).

^A This setting does not affect settings that have been stored in the power seat's* memory function*. See the owner's manual for more information.

ENTRY TO THE REAR SEAT



MANUAL SEAT

Move the seat forward

1. Loosen the belt from the belt guide (A).
2. Lift the handle (B) and fold the backrest forward to the locked position.
3. Push the seat forward (C).

Move the seat backward

1. Push the seat back to the desired position (D).
2. Lift the handle (E) and fold back the backrest.
3. Replace the belt in the belt guide (F).

POWER SEAT*

Move the seat forward

1. Loosen the belt from the belt guide (A).
2. Lift the handle (B) and fold the backrest forward to the locked position.
3. Hold the in the button's front section (G).

Move the seat backward

1. Hold the in the button's rear section (G).
2. Lift the handle (E) and fold back the backrest.
3. Replace the belt in the belt guide (F).

NOTE

When putting on the seatbelt, it is easiest to take it down by the belt guide, and not over the shoulder.

CAR CARE



Washing by hand is gentler to the paintwork than an automatic car wash. The paintwork is also more sensitive when it is new. For this reason, handwashing is recommended during the first few months with a new car. Use clean water and a washing sponge. Remember that dirt and grit can scratch the paint.