



**V40**

---

## **QUICK GUIDE** WEB EDITION

---



### **WELCOME TO YOUR NEW VOLVO!**

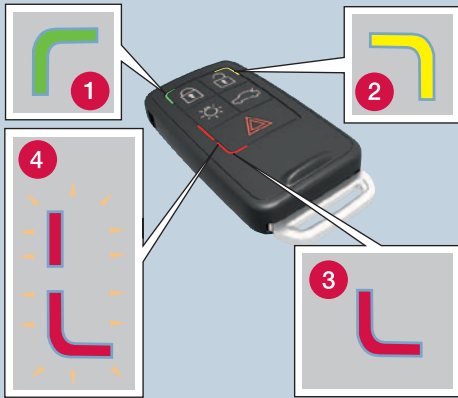
Getting to know your new car is an exciting experience. Take a look at this Quick Guide to learn some of the most common functions quickly and easily.

All warning texts, and other important and detailed information, are only available in the owner's manual – this folder only contains a small selection.

In addition, the owner's manual contains the latest and most current information.

Options are marked with an asterisk (\*).

There is further information concerning your car at [www.volvocars.com](http://www.volvocars.com).



**PCC\***

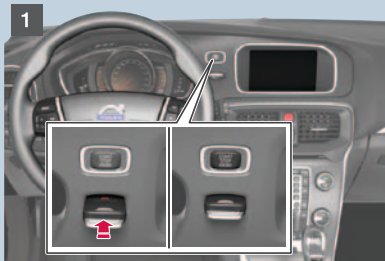
- 1 Green light: The car is locked.
- 2 Yellow light: The car is unlocked.
- 3 Red light: The alarm has been triggered.
- 4 Flashing alternating red light: Alarm triggered less than 5 minutes ago.

- Locks doors and tailgate and arms the alarm\*.
- Unlocks the doors<sup>A</sup> and tailgate and disarms the alarm.
- Unlocks the tailgate – this does not open.<sup>B</sup>
- Approach light duration. Switches on the lamps in the side mirrors\*, the direction indicators and parking lamps, at the number plate, passenger compartment and floor.
- Panic function. Held down for approx. 3 seconds in an emergency in order to trigger the alarm.
- Information on the car can be obtained within a radius of 100 metres.  
– Press the button and wait 7 seconds.  
Pressing the button out of range shows the last status stored in the memory.

<sup>A</sup>Automatic relocking takes place if a door/tailgate has not been opened within 2 minutes after unlocking.

<sup>B</sup>Electric rear window is disarmed, unlocked and opened by a few cm.

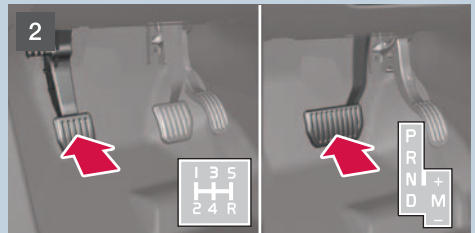
**START THE ENGINE**



1. Insert the remote control key in the ignition switch and push in the key to its end position.



3. Briefly press the button to start the engine.



2. Depress the clutch or brake pedal.

**COLD START**

**NOTE**

After a cold start the idling speed is high irrespective of outside temperature. A period of raised idling speed is part of Volvo's efficient emissions system.

During cold starts diesel engines have a certain delay in starting because the combustion chambers have to be preheated.

## SWITCH OFF THE ENGINE AND REMOVE THE REMOTE CONTROL KEY



1. Briefly press the button – the engine stops.
2. Pull the remote control key out from the ignition switch.

## BLIS\*



BLIS (Blind Spot Information System) is designed for driving in heavy traffic on roads with multiple lanes in the same direction, and provides notification of vehicles in the blind spot and vehicles rapidly catching up in the right and left lanes nearest to the driver's own vehicle.

## KEY POSITIONS



In order to reach the following key positions without the engine starting: Do **not** depress the brake/clutch pedal.

**0** Unlock the car.

**I** With the remote control key fully inserted into the ignition switch: Briefly press **START/STOP ENGINE**.

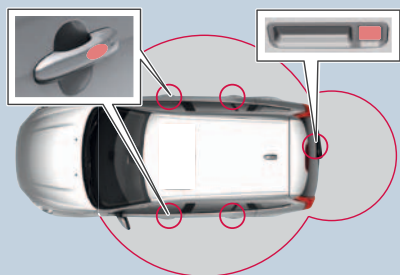
**II** With the remote control key fully inserted into the ignition switch: Press **START/STOP ENGINE** for about 2 seconds.

Key position **II** consumes a lot of current from the battery and should therefore be avoided!

See also the table in the section "Key positions" in the normal owner's manual for the car for information on the functions/systems that can be used with the engine switched off in different key positions.

To return to key position **0** from position **II** and **I**: Briefly press **START/STOP ENGINE**.

## KEYLESS\* KEY SYSTEM



or press lightly on the smaller of the tailgate's two rubberised buttons.

### START THE ENGINE

- Depress the brake/clutch pedal and briefly press the **START/STOP ENGINE** button.

### SWITCH OFF THE ENGINE

- Briefly press the **START/STOP ENGINE** button.

See the owner's manual, section "Locks and alarm", for more information.

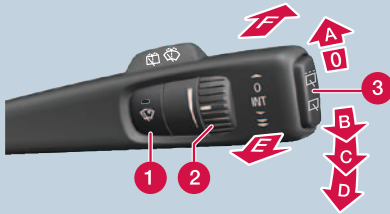
The key can remain in a pocket, for example, the whole time.

### LOCK & ARM THE CAR ALARM


- Touch the rear section of one of the outer door handles (see illustration) or press lightly on the smaller of the tailgate's two rubberised buttons.

### UNLOCK & DISARM THE ALARM

- Grip a door handle and open the door in the usual way (a glove may prevent the function)



- 1 Rain sensor On/Off, with the lever in position 0.
- 2 Regulates the sensor sensitivity or the intermittent delay.
- 3 Wiper, rear window - intermittent/normal.

- A Single sweep
  - O Off
  - B Intermittent wiper, see also (2)
  - C Normal sweep speed
  - D High sweep speed
  - E Washer, windscreen and headlamps
  - F Washer, rear window
-  Shown in the display when the rain sensor is active

ADJUSTING THE FRONT SEAT



- 1 Lumbar support
- 2 Backrest rake.
- 3 Raise/lower seat.
- 4 Raise/lower the front of the seat cushion.
- 5 Forwards/backwards.
- 6 Lowering the passenger seat backrest.

REMOTE CONTROL KEY AND POWER DRIVER'S SEAT\*

All remote control keys can be used by different drivers to store the settings for the driver's seat.

The function must be activated in the **MY CAR** menu system under **Settings -> Car settings -> Car key memory**.

Proceed as follows:

- Adjust the seat as you want it.
- Lock the car by pressing the lock button on the remote control key that you normally use. This stores the seat's position in the remote control key's memory <sup>A</sup>.
- Unlock the car (by pressing the unlock button on the **same** remote control key) and open the driver's door. The driver's seat will automatically adopt the position that is stored in the remote control key's memory (if the seat has been moved since you locked the car).

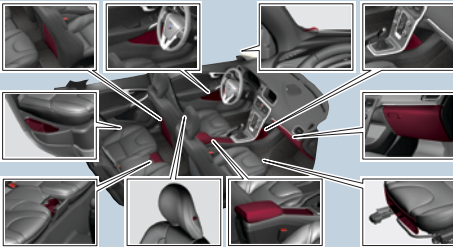
<sup>A</sup>. This setting does not affect settings that have been stored in the power seat's\* memory function\*. See the owner's manual for more information.

## HEADLAMP CONTROL



- A** Main beam flash
- B** Main/dipped beam switching and Home safe light duration
- Display and instrument lighting
- Rear fog lamp, the light only illuminates on the driver's side
- 0** Automatic (certain markets)/deactivated dipped beam. Main beam flash working but not fixed main beam
- Parking lamps
- Warning lamp, switching to dipped beam, tunnel detection\*, full beam with automatic activation\*
- Dipped beam. Switches off when the engine is switched off. Main beam can be activated
- Manual headlamp levelling (automatic for Xenon lights\*)
- Unlocking of tailgate

## STORAGE SPACES, 12 V SOCKET & AUX/USB\*



The 12 V sockets in the passenger compartment work in key position **I or II**. The 12 V socket\* in the cargo area is always active.

### **IMPORTANT**

Using the 12 V socket in the cargo area when the engine is switched off could discharge the battery.

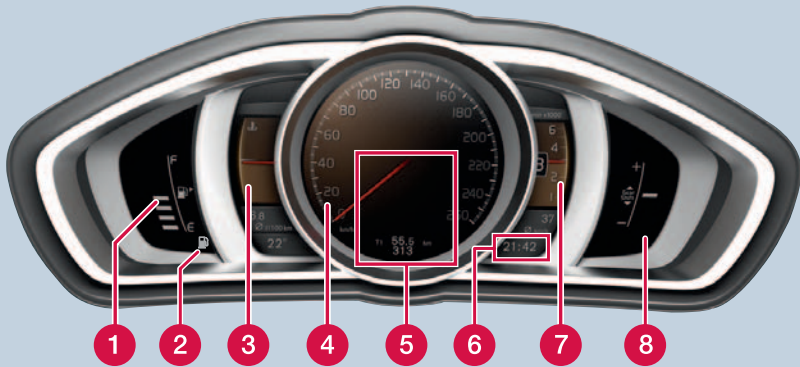
## START/STOP\*



With Start/Stop the engine can be set to stop/start automatically in stationary traffic. Illuminated button lamp indicates that the function is active.

**Manual transmission:** Stop – declutch, place the gear lever in neutral and release the clutch pedal. Start – depress the clutch pedal.

**Automatic transmission:** Stop – stop the car using the footbrake, then keep your foot on the pedal. Start – release the footbrake. This function can be disabled in the menu system.



- 1 Fuel gauge. The symbol's arrow points out the side on which the fuel cap is located.
- 2 Low fuel level. When the lamp is illuminated, fill with fuel as soon as possible.
- 3 Coolant temperature/EcoGuide<sup>A</sup>.
- 4 Speedometer.
- 5 Information on driver support system<sup>A</sup>.
- 6 Clock. Adjusted in the **MY CAR** menu system.
- 7 Tachometer/PowerMeter<sup>A</sup>.
- 8 Gear change indicator/Gear selection indicator.
- 9 Press to show/clear message.
- 10 Turn to see the trip computer's options.
- 11 One short press resets the trip computer's current function.  
One long press resets all trip computer functions.



**NOTE**

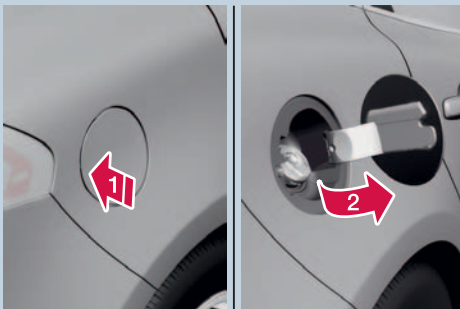
Display text **\_\_\_ km to empty tank** is an estimate of the possible distance left to drive, based on earlier driving conditions.

Various themes can be selected for the High-Line instrument cluster: Elegance, Eco or Performance.

To change the theme, press the **OK** button on the left stalk and then select the **Themes** menu option by rotating the thumbwheel on the stalk. Confirm by pressing the **OK** button.

<sup>A</sup> EcoGuide and PowerMeter are displayed only if the relevant theme is selected.

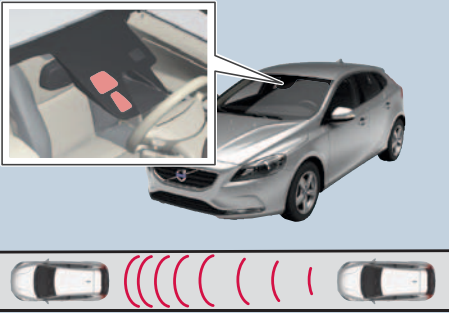
REFUELLING



1. With the car unlocked, open the tank flap by pushing lightly on the back part of the flap (1).
2. Pull out the flap (2).
3. Insert the pump nozzle in the fuel filler opening. Take care to insert the nozzle properly in the filler pipe.

The filler opening is designed to prevent filling the vehicle with the wrong fuel (a petrol car cannot be filled with diesel, and vice versa).

After fuelling, wait 5-8 seconds before removing the pump nozzle from the filler pipe.



**City Safety™ and Collision Warning with Auto-Brake & Pedestrian detection\***

These functions help the driver to avoid a collision in situations when changes in the traffic ahead, combined with a lapse in attention, could lead to an incident.

The function is active at speeds below 50 km/h and helps the driver by monitoring the traffic ahead with a laser sensor fitted in the upper part of the windshield.

City Safety™ can help avoid a collision if the speed difference between your car and the vehicle in front is less than 15 km/h.

If the speed difference is greater then a collision cannot be avoided, but the speed of the initial impact is reduced. City Safety™ is designed to be activated as late as possible in order to avoid unnecessary interventions.

**⚠ WARNING**

The driver is always responsible that the vehicle is driven in a correct manner and with a safety distance adapted to the speed.

City Safety™ is a driver tool and can never replace the driver's attention to the traffic or the responsibility to drive the vehicle in a safe manner.

Pedestrian detection (detector for pedestrians in front of the car) gives no warning or brake intervention at vehicle speeds above 80 km/h and it does not work in the dark or in tunnels.

The function cannot detect a pedestrian who:

- is partially obscured
- is shorter than 80 cm tall
- is wearing clothing that conceals the contours of the body.

**Other driver support systems**

In order to help the driver to e.g. brake in time, maintain a safe distance to other vehicles and to notice vehicles moving in the same direction as the car, in the so-called blind spot, or to maintain a good position on the carriageway, the car can be equipped with a number of systems:

- Adaptive cruise control (man)\*
- Adaptive cruise control with Queue Assistant (aut)\*
- Distance Alert\*
- BLIS – (Blind Spot Information System)\*
- Driver Alert Control\*
- Road Sign Info (RSI)\*
- Park Assist\*
- Lane Keep Assist (LKA)\*.

See the owner's manual, sections "Comfort and driving pleasure" and "Driver support", for more information about the functions and their limitations.

**EBA – EMERGENCY BRAKE ASSIST**



Emergency Brake Assistance helps to increase brake force and so reduce braking distance. EBA is activated when the driver brakes suddenly. When EBA is activated the brake pedal depresses a little more than usual.

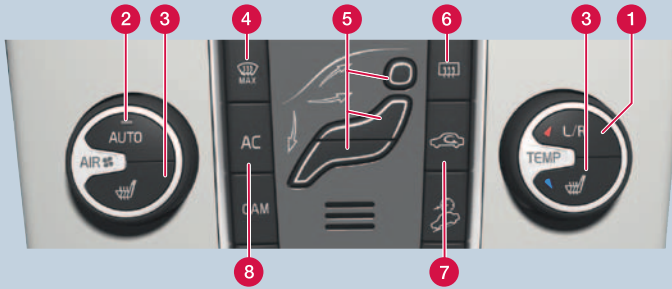
– Press (hold) down the brake pedal for as long as necessary – all braking ceases if the pedal is released.

**CAR CARE**



Handwashing is gentler on the paintwork than an automatic car wash. The paintwork is also more sensitive when it is new. For this reason, handwashing is recommended during the first few months with a new car.

Use clean water and a washing sponge. Remember that dirt and grit can scratch the paintwork.



## AUTOMATIC CONTROL

In AUTO mode the ECC system controls all functions automatically, making driving simpler with optimum air quality.

- 1 Press for individual temperature. Once for the left side, twice for the right side, three times for both sides. Turn to set the temperature. The display shows the temperature selected.
- 2 Press for automatic control of the selected temperature and other functions. Turn to adjust the fan speed.

## MANUAL CONTROL

- 3 Heating, left/right-hand seat.
- 4 Max. defroster. Directs all air towards the windscreen and side windows, with maximum air flow. Electric heated front windscreen: 1 press to start, 2 presses start the electric heated front windscreen and aim all air at the front and side windows, 3 presses to stop.
- 5 Air distribution.
- 6 Rear window and side mirror defrosters On/Off.
- 7 Recirculation.
- 8 AC – Air conditioning On/Off. Cools the passenger compartment and demists the windows.

## AIR DISTRIBUTION (models with Electronic Temperature Control - ETC - only)

Adjust the air distribution as follows to provide the best comfort in various driving conditions:

### External temperature

< 0°C

0°C to +20°C

> 20°C

Mist/frost on windows

### Control

FLOOR or FLOOR/WIND SCREEN

FLOOR or FLOOR/PANEL PANEL

WINDSCREEN or FLOOR/WINDSCREEN

## ADJUSTING THE STEERING WHEEL



### WARNING

Adjust the steering wheel before starting to drive – never do this while driving.

1. Release the catch.
2. Adjust.