



VOLVO V70 & XC70  
**QUICK GUIDE**

WEB EDITION



## **WELCOME TO YOUR NEW VOLVO!**

Getting to know your new car is an exciting experience.

Take a look at this Quick Guide to learn some of the most common functions quickly and easily.

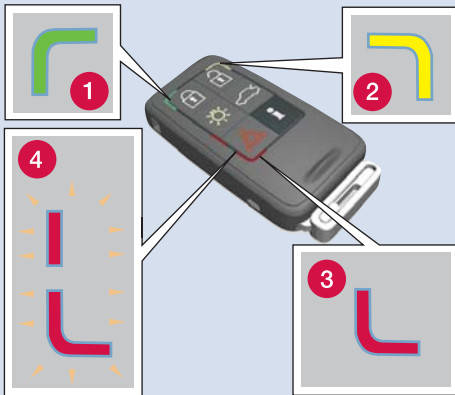
All warning texts, and other important and detailed information, are only available in the owner's manual – this folder only contains a small selection.

In addition, the owner's manual contains the latest and most current information.

Options are marked with an asterisk (\*).

There is further information concerning your car at [www.volvocars.com](http://www.volvocars.com)

## REMOTE CONTROL KEY WITH PCC\* – PERSONAL CAR COMMUNICATOR



### PCC\*

- 1 Green light: The car is locked.
- 2 Yellow light: The car is unlocked.
- 3 Red light: The alarm has been triggered.
- 4 Flashing alternating red light: Alarm triggered less than 5 minutes ago.

- Locks doors and tailgate and arms the alarm\*.
- Unlocks the doors<sup>A</sup> and tailgate and disarms the alarm.
- Unlocks the tailgate – this does not open.<sup>B</sup>
- Approach light duration. Switches on the lamps in the side mirrors\*, the direction indicators and parking lamps, at the number plate, passenger compartment and floor.
- Panic function. Held down for approx. 3 seconds in an emergency to trigger the alarm.
- Information on the car can be obtained within a radius of 100 metres.
  - Press the button and wait 7 seconds.
  - Pressing the button out of range shows the last status stored in the memory.

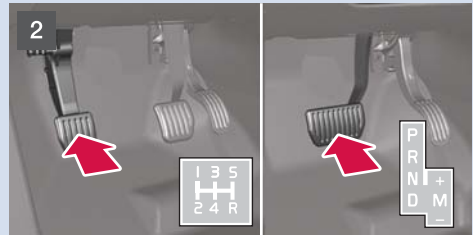
<sup>A</sup> Automatic relocking takes place if a door/tailgate has not been opened within 2 minutes after unlocking.

<sup>B</sup> Power tailgate\* opens.

## START THE ENGINE



1. Insert the remote control key in the ignition switch and push in the key to its end position.



2. Depress the clutch or brake pedal.



3. Briefly press the **START STOP ENGINE** button to start the engine.

## COLD START

### NOTE

After a cold start the idling speed is high irrespective of outside temperature. A period of raised idling speed is part of Volvo's efficient emissions system.

During cold starts diesel engines have a certain delay in starting because the combustion chambers have to be preheated.

## SWITCH OFF THE ENGINE AND REMOVE THE REMOTE CONTROL KEY



1. Briefly press the button – the engine stops.
2. Pull the remote control key out from the ignition switch.

## BLIS – BLIND SPOT INFORMATION SYSTEM\*



If the BLIS indication lamp illuminates despite no vehicle being in the blind spot, the cause could be reflection from wet road surface or low sun shining into the camera for example.

In the event of a direct fault in the system the display shows the text **Blind spot syst. Service required.**

## KEY POSITIONS



In order to reach the following key positions without the engine starting: Do **not** depress the brake/clutch pedal.

**0** Unlock the car.

**I** With the remote control key fully inserted into the ignition switch: Briefly press **START/STOP ENGINE**.

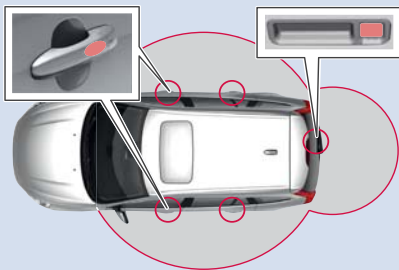
**II** With the remote control key fully inserted into the ignition switch: Press **START/STOP ENGINE** for about 2 seconds.

Key position **II** consumes a lot of current from the battery and should therefore be avoided!

See also the table in the section "Key positions" in the normal owner's manual for the car for information on the functions/systems that can be used with the engine switched off in different key positions.

To return to key position **0** from position **II** and **I**: Briefly press **START/STOP ENGINE**.

## KEYLESS\* KEY SYSTEM



The key can remain in a pocket, for example, the whole time.

### LOCK & ARM THE CAR ALARM

- Touch the rear section of one of the outer door handles (see illustration) or press lightly on the smaller of the tailgate's two rubberised buttons.

### UNLOCK & DISARM THE ALARM

- Grip a door handle and open the door in the usual way (a glove may prevent the function) or press lightly on the larger of the tailgate's two rubberised buttons.

### START THE ENGINE

- Depress the brake/clutch pedal and briefly press the **START/STOP ENGINE** button.

### SWITCH OFF THE ENGINE

- Briefly press the **START/STOP ENGINE** button.

See the owner's manual, section "Locks and alarm", for more information.

## WINDSCREEN WIPERS AND RAIN SENSOR\*



- 1 Rain sensor On/Off, with the lever in position 0.
- 2 Regulates the sensor sensitivity or the intermittent delay.
- 3 Wiper, rear window - intermittent/normal.

A	Single sweep
0	Off
B	Intermittent wiper, see also (2).
C	Normal sweep speed.
D	High sweep speed.
E	Washer, windscreen and headlamps.
F	Washer, rear window.
	Illuminates when the rain sensor is active.

## AUDIO SYSTEM



- 1 Turn to adjust the volume.
- 2 Long press for ON/OFF. Short press for audio off/on
- 3 Press to select **AM, FM1, FM2, DAB1\***, **DAB2\***.
- 4 Press to select **Disc, USB\***, **iPod\***, **AUX<sup>A</sup>**, **Bluetooth\***, **TV\***.

### RADIO

- 6 Turn to select station.
- 7 Search station with left/right arrow. Long press scrolls between strong stations, short press scrolls between stored stations. Store the station by pressing in one of the numeric keys **0-9** until the display confirms storage.
- 8 Press to select sound pattern, such as **Bass**, **Treble** or **Surround\*** - Turn **VOL** (1) to adjust.

### CD/DVD\* player

- 5 Press to eject the disc.
- 6 Turn to change CD track from the track list.
- 7 Change CD track using left/right arrow, fast forward/rewind with a long press.

Thumbwheel\* in steering wheel: browse in the menus.

One press on the thumbwheel confirms a selection (OK) in the menu system.

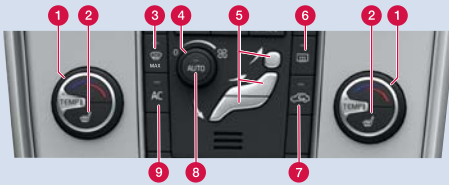
An iPod<sup>® B</sup> or MP3 player can be connected to the audio system via the centre console's AUX connection or USB port. An iPod\* connected to the USB port will also be charged.

### RADIO SYSTEM DAB\*

The digital broadcasting system, Digital Audio Broadcasting, offers High Quality radio and even more channels.

<sup>A</sup> AUX input for e.g. MP3 player (set volume to medium for optimum audio reproduction). AUX audio source volume is adjusted with **TUNE** (6).

<sup>B</sup> The iPod<sup>®</sup> trademark belongs to Apple Computer Inc.



### AUTOMATIC CONTROL

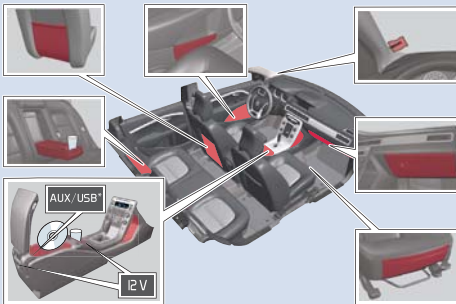
In **AUTO** mode the ECC system controls all functions automatically, making driving simpler with optimum air quality.

- 1 Turn for the individual temperature on the left/right-hand side of the passenger compartment. The display shows the selected temperature.
- 8 Press for automatic control of selected temperature and other functions.

### MANUAL CONTROL

- 2 Heating, left/right-hand seat.
- 3 Max. defroster. Directs all air towards the windscreen and side windows, with maximum air flow.
- 4 Turn to change the fan speed.
- 5 Air distribution.
- 6 Rear window and side mirror defrosters On/Off.
- 7 Recirculation.
- 9 **AC** – Air conditioning On/Off. Cools the passenger compartment and demists the windows.

### STORAGE SPACES, 12 V SOCKET & AUX/USB\*



The 12 V sockets in the passenger compartment work in key position 0 or I. The 12 V socket\* in the cargo area is always active.

The car's audio system can playback music from an MP3 player etc. using the AUX/USB\* output.



### IMPORTANT

Using the 12 V socket in the cargo area when the engine is switched off could discharge the battery.

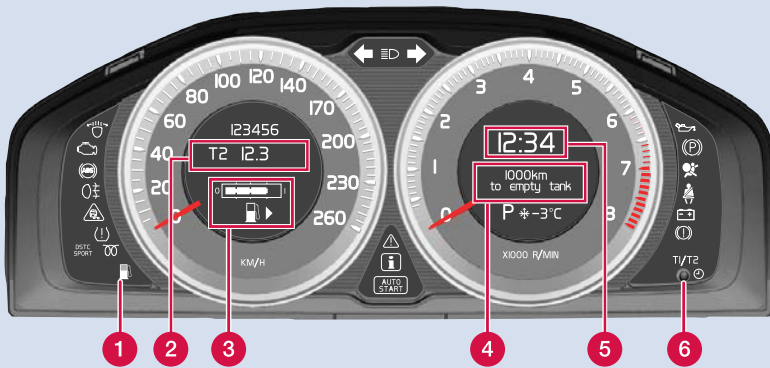
### ECO DRIVE\*



The *DRIVE* function activates a program that helps the driver to reduce fuel consumption and emissions.

With Start/Stop the engine can be set to stop/start automatically in stationary traffic.

*DRIVE* can be switched off. Illuminated button lamp indicates that the function is active.



- 1 Low fuel level. When the lamp is illuminated, fill with fuel as soon as possible.
- 2 T1 & T2 – independent trip meters, which are always active.
- 3 Fuel gauge. The symbol's arrow points out the side on which the fuel cap is located.
- 4 Display, trip computer. Select function with (8).
- 5 Clock. Adjusted in the **MY CAR** menu system or with (6).
- 6 One short press switches between T1 & T2. One long press resets the current meter. Setting the clock: turn to the end position and then turn past the end position with a "click".
- 7 Press to show/clear message.
- 8 Turn to see the trip computer's options.



- 9 One short press resets the trip computer's current function. One long press resets all trip computer functions.

**i NOTE**

Display text **\_\_\_ km to empty tank** is an estimate of the possible distance left to drive, based on earlier driving conditions.

ADJUSTING THE STEERING WHEEL



**! WARNING**

Adjust the steering wheel before starting to drive – never do this while driving.

- 1. Release the catch.
- 2. Adjust.

BLUETOOTH\*



- 1. Makes mobile phone searchable/visible.
- 2. Hold in the audio system's **TEL** key.
- 3. Select **Add phone** from the audio system display.
- 4. Select the phone to be connected.
- 5. Input the digits shown in the audio system display using the mobile phone's keypad.



### City Safety™ and Collision Warning with Auto-Brake & Pedestrian detection\*

These functions help the driver to avoid a collision in situations when changes in the traffic ahead, combined with a lapse in attention, could lead to an incident.

The function is active at speeds below 30 km/h and helps the driver by monitoring the traffic ahead with a laser sensor fitted in the upper part of the windscreen.

City Safety™ can help avoid a collision if the speed difference between your car and the vehicle in front is less than 15 km/h.

If the speed difference is greater then a collision cannot be avoided, but the speed of the initial impact is reduced. City Safety™ is designed to be activated as late as possible in order to avoid unnecessary interventions.



#### WARNING

The driver is always responsible that the vehicle is driven in a correct manner and with a safety distance adapted to the speed.

City Safety™ is a driver tool and can never replace the driver's attention to the traffic or the responsibility to drive the vehicle in a safe manner.

Pedestrian detection (detector for pedestrians in front of the car) gives no warning or brake intervention at vehicle speeds above 80 km/h, and it does not work in the dark or in tunnels.

The function cannot detect a pedestrian who:

- is partially obscured
- is shorter than 80 cm tall
- is wearing clothing that conceals the contours of the body.

### Other driver support systems

In order to help the driver to e.g. brake in time, maintain a safe distance to other vehicles and to notice vehicles moving in the same direction as the car, in the so-called blind spot, or to maintain a good position on the carriageway, the car can be equipped with a number of systems:

- Adaptive cruise control (man)\*
- Adaptive cruise control with Queue Assist (aut)\*
- Distance Alert\*
- BLIS – (Blind Spot Information System)\*
- Driver Alert Control\*
- Lane Departure Warning\*.

See the owner's manual, section "Comfort and driving pleasure", for more information about the functions and their limitations.

### EBA – EMERGENCY BRAKE ASSIST



Emergency Brake Assistance helps to increase brake force and so reduce braking distance. EBA is activated when the driver brakes suddenly. When EBA is activated the brake pedal depresses a little more than usual.

– Press (hold) down the brake pedal for as long as necessary – all braking ceases if the pedal is released.

### CAR CARE



Handwashing is gentler on the paintwork than an automatic car wash. The paintwork is also more sensitive when it is new. For this reason, handwashing is recommended during the first few months with a new car.

Use clean water and a washing sponge. Remember that dirt and grit can scratch the paintwork.

## HEADLAMP CONTROL



- A** Main beam flash
- B** Main/dipped beam switching and Home safe light duration
- Display and instrument lighting
- Front fog lamps
- Rear fog lamp, the light only illuminates on the driver's side
- Automatic dipped beam. Main beam flash working but not fixed main beam
- Parking lamps
- Dipped beam. Switches off when the engine is switched off. Main beam can be activated
- Opens petrol tank cap
- Manual headlamp levelling (automatic for Xenon lights\*)
- Unlocking of tailgate

## ADJUSTING THE FRONT SEAT



- 1** Lumbar support
- 2** Backrest rake.
- 3** Raise/lower seat.
- 4** Raise/lower the front of the seat cushion.
- 5** Forwards/backwards.
- 6** Lowering the passenger seat backrest.

## PARKING BRAKE



### To apply

- Press the button. The warning lamp flashes until the parking brake is fully applied – after which the lamp stays on.

### To disengage

1. Key position **0** or **I**.
2. Depress the brake pedal and pull the button gently.

### Disengage automatically

- Drive away. (For cars with automatic transmission, the seatbelt must be buckled).