



**V40**

---

---

# **QUICK GUIDE**

WEB EDITION





---



## WELCOME TO YOUR NEW VOLVO!

This folder contains a selection of the most common functions in your car. The owner's manual and other manuals contain important information with all warnings and safety instructions.

The following symbols mean:

-  Different parts are pointed out in the overview images.
-  Step-by-step instructions.
-  It is particularly important to read the owner's manual.
-  Important information, warnings and safety instructions that must be read are listed on the last page.

Options are marked with an asterisk \*.

In addition, learn more about your car at [www.volvocars.com](http://www.volvocars.com)

### 01 Starting and driving

Remote control key  
Starting and switching off the engine  
Keyless key system\*  
Wipers

### 02 Driver support in your car

Park Assist Pilot\*  
Lane Keeping Aid\*  
BLIS\* and CTA\*  
Start/Stop function\*

### 03 Your driving environment

Adjusting the seat  
Adjusting the steering wheel

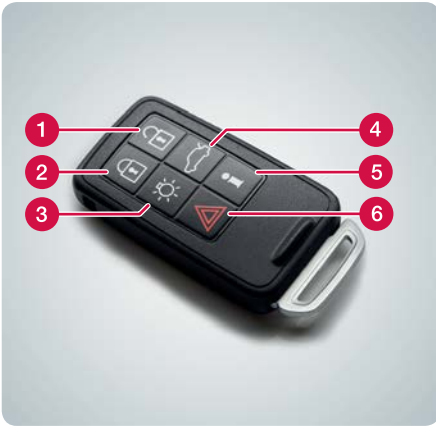
### 04 Functions in your car

Climate system controls  
Headlamp control  
Combined instrument panel  
Infotainment system  
Phone\*  
External audio device  
Buttons in the centre console  
Settings in the menu system

### 05 Tips

Refuelling  
Car care  
Opening all windows  
Storage spaces  
AUX/USB\* and 12 V sockets

## How does the remote control key work? 01



- 1 Unlocks doors and tailgate and disarms the alarm\*.
- 2 Locks doors and tailgate and arms the alarm.
- 3 Approach light duration.
- 4 Only unlocks the tailgate.
- 5 Information\* about the car.
- 6 Panic function

The remote control key can store settings including door mirrors and driver's seat\*, see the owner's manual.



## How do I start the engine? 01



- 1 Press the remote control key into the ignition switch.
- 2 Depress the clutch or brake pedal.
- 3 Briefly press the **START/STOP ENGINE** button and release – the engine starts.



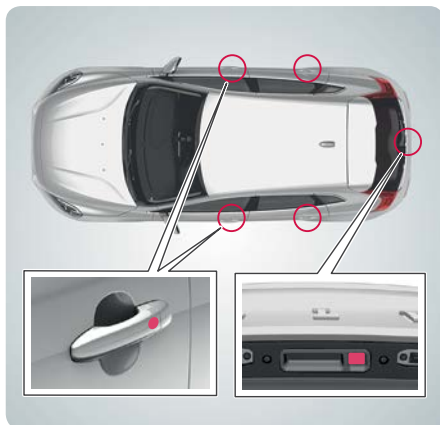
## How do I switch off the engine? 01



- 1 Briefly press the **START/STOP ENGINE** button – the engine stops.
- 2 Take the remote control key out from the ignition switch.

### How does the Keyless\* key system work?

01



The key can remain in your pocket for example the whole time.

#### Lock and arm the alarm (see illustration)

- Touch the rear section of one of the outer door handles or press lightly on the smaller of the tailgate's two rubberised buttons.

#### Unlock and disarm the alarm

- Grip a door handle and open the door in the usual way or press lightly on the larger of the tailgate's two rubberised buttons.



### How do I start the windscreen wipers and rain sensor\*?

01



Move the lever downward to start the windscreen wipers and upward for a single sweep.

- 1 Rain sensor On/Off.
- 2 Regulates the sensor sensitivity or the intermittent delay.
- 3 Wiper, rear window - intermittent/normal.

### How do I use Park Assist Pilot PAP\*?

02



PAP checks the available space, and then steers in the car. Your task is to select the gear, control the speed and brake/stop.

- 1 Activate PAP with one press on the button. Do not drive faster than 30 km/h.
- 2 Follow the instructions that are shown in the combined instrument panel.
- 3 Be prepared to stop the car when the graphics and text advise this.



## What is the function of Lane Keeping Aid LKA\*?

02



If the car is about to cross a side line the LKA will actively steer back into the lane with a slight steering torque in the steering wheel. If the car crosses a side line then LKA will warn you with pulsating vibration in the steering wheel.

- Activate LKA with one press on the button.



## What is the function of BLIS\* and CTA\*?

02



**Blind Spot Information System** advises about vehicles in the blind spot and rapidly approaching vehicles. **Cross Traffic Alert** warns of crossing traffic during reversing.

- BLIS and CTA are activated when the engine is started and can be deactivated/reactivated by pressing the button.



## How do I use the Start/Stop function\*?

02



### Manual gearbox

Stop the engine: Declutch, set the gear lever in neutral position and release the clutch pedal.

Start the engine: Depress the clutch pedal.

### Automatic gearbox

Stop the engine: Stop the car with the foot brake and then maintain the brake pressure.

Start the engine: Release foot pressure on the foot brake.

Illuminated buttonlamp indicates that the function is active.

## How do I adjust the seat?

03



- 1 Raise/lower the front of the seat cushion.
- 2 Raise/lower seat.
- 3 Move the seat forward/backward.
- 4 Tilt the backrest.
- 5 Store settings for power seat\*.
- 6 Memory buttons for power seat.

### Store setting:

Hold the button depressed to store settings while depressing one of the memory buttons.



Seat settings can also be stored in the remote control key\*, see the owner's manual.



## How do I adjust the steering wheel?

03



- 1 Release the catch.
- 2 Adjust the steering wheel forward/backward and up/down.
- 3 Lock the steering wheel.

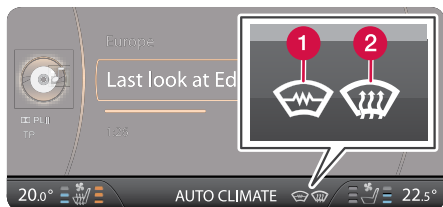




## How do I regulate the temperature with the ECC\*?

04

- 1 Press for individual temperature. Press repeatedly to select the setting for the left, right or both sides. Turn to adjust the temperature. The centre console's screen shows the selected temperature for each side.
- 2 Press for automatic control of the temperature and other functions. Turn to adjust the fan speed.



## How do I defrost the windscreen?

04

- 1 Press to activate the windscreen's electric heating\* - symbol (1) in the screen illuminates.
- 2 The next press also activates maximum air flow against the windscreen and side windows - symbols (1) and (2) illuminate.
- 3 The next press switches off both of the functions - no symbol illuminates.

Without electric heating: Press to activate/deactivate the air flow.

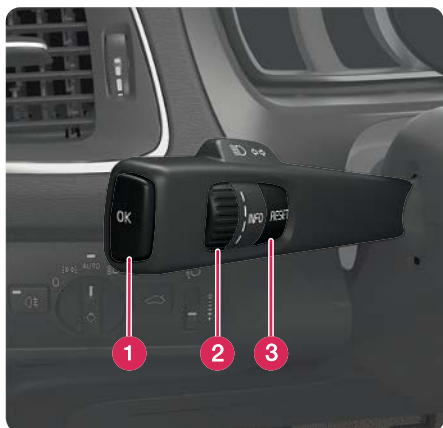


## How does the headlamp control's auto mode work?

04

The daytime running lights automatically switch between daytime running lights and dipped beam. Main beam can be activated when dipped beam is switched on. Active high beam (AHB)\* that dims and activates main beam automatically can be used. Tunnel detection\* is activated.





## How is the trip computer operated?

04

- 1 **OK** opens the trip computer's menus, activates selected option and extinguishes messages.
- 2 Thumbwheel scrolls between the trip computer options.
- 3 **RESET** resets data in the selected trip computer step and goes back in the menu structure.



## How do I reset the trip meter?

04

- 1 Give two short presses on the left-hand stalk switch **RESET** button.
- 2 Angle forward trip meter T1 or T2 with the thumbwheel.
- 3 Give a long press on **RESET** to reset to zero.



## How does the gear shift indicator work\*?

04

The gear shift indicator's arrows advise when it is appropriate to engage a higher or lower gear in order to obtain optimum driving economy. The illustration shows the digital\* combined instrument panel.

Analogue combined instrument panel, see the owner's manual.







### How do I change the combined instrument panel's appearance?

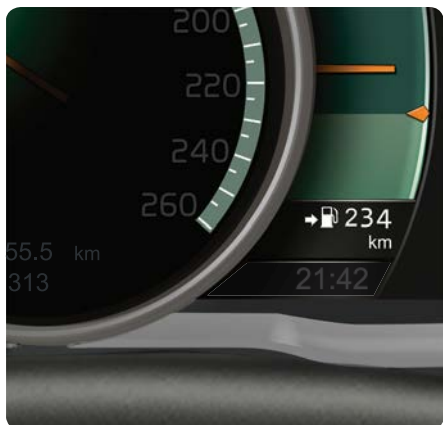
04

Different themes can be selected with the digital\* combined instrument panel, such as Performance or Eco.

To change the theme:

- 1 Press the left-hand stalk switch's **OK** button when the engine is running.
- 2 Turn the lever's thumbwheel in order to select menu option **Themes**.
- 3 Turn the thumbwheel to select a theme and press **OK** to confirm.

The theme is stored in the remote control key\*, see the owner's manual.



### How does the range/"km to empty tank" work?

04

The combined instrument panel shows an estimation of the possible driving distance based on previous driving conditions and remaining fuel quantity.

No guaranteed range remains when "...km" is shown. Refuel as soon as possible. The illustration shows the digital\* combined instrument panel.



Analogue combined instrument panel, see the owner's manual.



### How do I switch the infotainment system on and off?

04

- 1 Give a short press to start the system.
- 2 Give a long press (until the screen switches off) in order to switch off.

To switch off the sound (MUTE): Give a short press - the next press reactivates.



- 1 Press **RADIO, MEDIA, MY CAR, NAV\*** or **TEL\*** to select main source.
- 2 Press **OK/MENU** or the thumbwheel\* in the steering wheel to access the selected source's main menu.
- 3 Turn **TUNE** or the thumbwheel to navigate in the menus.
- 4 Press **OK/MENU** or the thumbwheel to make a selection in the menus.

Briefly press **EXIT** to go back in the menu system, cancel a function or delete entered characters.

Give a long press on **EXIT** to go back to normal view, or to go from normal view to the main source view.

## Tips:

To go to the shortcut menu in the NAV or TEL mode, press once on **NAV** or **TEL**. Press again to go back to normal view.



# How do I connect a Bluetooth® phone?

- 1 Press **TEL\*** in the centre console.
- 2 Make the external device searchable/visible via Bluetooth®.
- 3 Press **OK/MENU** and follow the instructions on the screen. The device is now connected and can be controlled from the car.

In future the phone will be connected to the car automatically.

If the connection fails, see the owner's manual.





## How do I make a call?

04

- 1 Press **TEL\*** in the centre console.
- 2 Enter the required number or turn the thumbwheel on the steering wheel downward in order to access the phone book, and upward for the call register.
- 3 Press the thumbwheel to dial.

The call is interrupted with a press on **EXIT**.

For more ways to make a call with the phone, see the owner's manual.



## How do I answer the phone\*?

04

- Press the thumbwheel to accept incoming calls.

The call is rejected/interrupted with a press on **EXIT**.

For more ways to answer the phone, see the owner's manual.



## How do I connect an external audio device?

04

- 1 Connect an external device via the AUX input or USB\* port in the centre console.
- 2 Press **MEDIA**.
- 3 Turn **TUNE** to the desired audio source.
- 4 Press **OK/MENU**.

For other connections of an external device, see the owner's manual.





### How do I save radio stations in the preset list?

04

10 presets can be stored per wavelength (AM, FM1 etc.).

- 1 Tune into a station.
- 2 Hold in one of the preset buttons for a few seconds, the sound disappears during this time and returns when the station is stored.
- 3 The preset button can now be used.

Different stations can be set, see the owner's manual.



### How do I set a GPS\* destination?

04

- 1 Press **NAV** to start the navigation system.
- 2 Press once again on **NAV** and select **Enter address** with **OK/MENU**.
- 3 Enter a search criterion/search criteria using the "daisy wheel" or the centre console's numeric keypad.
- 4 Then select **Set single destination** or **Add as waypoint** and press **OK/MENU**.

For more information and market deviations, see the RTI manual\*.



### How do I store a function with the FAV button?

04

- 1 Select a main source (e.g. **RADIO**, **MEDIA**).
- 2 Select source (e.g. **AM**, **DISC**).
- 3 Press and hold **FAV** depressed until the "favourites menu" is shown.
- 4 Turn **TUNE** to select an option from the list and press **OK/MENU** to save.

When the main source is active, the stored favourite is accessible by means of a short press on **FAV**.

## What settings can be made in the menu system?

04



**MY CAR** handles many of the car's functions, e.g. settings for clock, door mirrors and locks.

See the earlier heading "How do I navigate in the infotainment system?" for which buttons to use.



## How do I set the clock?

04



- 1 Navigate to **Settings > System settings > Time** in **MY CAR**.
- 2 Press **OK/MENU** to activate the box for hour. Turn **TUNE** in order to set the hour and press **OK/MENU** to deactivate.
- 3 Turn **TUNE** to select the box for minute and press **OK/MENU**. Turn **TUNE** in order to set the minute and press **OK/MENU** to deactivate.
- 4 Turn **TUNE** to select **OK** and press **OK/MENU**.

## How do I refuel?

05



- 1 With the car unlocked, open the fuel filler flap by pushing lightly on the rear part of the flap and release.
- 2 Fold out the flap.
- 3 Insert the pump nozzle in the fuel filler opening.
- 4 After fuelling: Wait 5–8 seconds before removing the pump nozzle.



### How should I wash the car??

05

Handwashing is gentler on the paintwork than an automatic car wash. The paintwork is also more sensitive when it is new. For this reason, handwashing is recommended during the first few months with a new car.

Use clean water and a washing sponge. Remember that dirt and grit can scratch the paintwork.



### How should I clean the leather upholstery\*?

05

Leather requires regular care in order to maintain its appearance. For this reason, the leather upholstery should be treated using the Volvo Leather Care kit 1–4 times per year. The Volvo Leather Care kit is available for purchase from a Volvo dealer.



### How do I open all windows simultaneously?

05

- Press the remote control key's unlock button for at least 4 seconds to open all windows simultaneously.

## Where are the storage spaces located? 05

Shown here are some of the car's storage spaces.



The owner's manual shows the location of more storage spaces.



## Where are the AUX/USB\* and 12 V sockets located? 05

The remote control key must be at least in key position **I** in order for the 12 V sockets in the passenger compartment to work. The 12 V socket\* in the cargo area is always live.



#### How do I start the engine?



After a cold start the idling speed is high irrespective of outside temperature. It is part of Volvo's efficient emissions system. During cold starting, certain diesel engines may have a delayed start due to preheating.

#### How does the Keyless\* key system work?



The use of gloves may prevent the Keyless function in the door handles.

#### How do I use Park Assist Pilot PAP\*?



PAP does not work in all situations but is designed simply as a supplementary aid. The driver always bears ultimate responsibility for ensuring that the vehicle is driven safely, and for having an overview of the surroundings and other road users approaching or passing while parking.

#### How do I use Lane Keeping Aid LKA\*?



LKA is only a driver tool, and does not work in all driving situations and traffic, weather and road conditions. The driver is always responsible that the vehicle is driven in a safe manner and that laws and traffic regulations in force are followed.

#### What is the function of BLIS\* and CTA\*?



BLIS and CTA are supplements – not substitutes – for a safe driving style and the use of rearview and door mirrors. The assistance from BLIS and CTA can never replace the driver's responsibility and attention. Responsibility for changing lanes safely and reversing in a safe manner always rests with the driver. BLIS does not work in sharp bends. BLIS does not work when the car is reversing.

#### How do I adjust the seat?



Adjust the driving position of the driver's seat correctly before setting off – never while driving. Make sure that the seat is in locked position in order to prevent personal injury in the event of sudden braking or an accident.

#### How do I adjust the steering wheel?



Adjust the steering wheel (after adjusting the seat) before setting off – never while driving.

#### How does the range/"km to empty tank" work?



A degree of incorrect indication may occur if the driving style is changed.

#### How should I clean the leather upholstery\*?



Some coloured clothing (e.g. jeans and suede garments) may discolour the upholstery. Never use strong solvents – they could damage the upholstery.

#### Where are the AUX/USB\* and 12 V sockets located?



Maximum current take-off is 10 A (120 W) in each socket.