



VOLVO XC90

QUICK GUIDE



WELCOME TO YOUR NEW VOLVO!

Getting to know your car is an exciting experience.

After looking through this Quick Guide you'll like your new Volvo even more. You can find detailed information in the Owner's Manual.

Warning texts and other important information are only available in the Owner's Manual, not in this folder. The Owner's Manual contains the most up-to-date information.

Options are marked with an asterisk (*).

KEY & REMOTE CONTROL



SERVICE KEY*

Only works for front door, ignition switch and steering lock.

1. Automatic relocking takes place if a door/tailgate is not opened within 2 minutes after unlocking.

2. The time is adjustable to 30, 60 or 90 seconds, see Owner's Manual.

LOCK

Locks the doors and fuel filler flap/tailgate and arms the alarm*.

UN-LOCK

Unlocks the doors and fuel filler flap/tailgate and disarms the alarm¹.



Unlocks tailgate. (Tailgate does not open.)



Switches on lighting for 30 seconds² in side mirrors*, in cabin, by feet and on number plate. Indicators and parking lamps illuminate.



"Panic" button. Keep the button depressed for approx. 3 seconds in an emergency situation in order to trigger the alarm. Switch off the alarm with **UNLOCK**.

COLD START



NOTE

The idling speed may briefly be slightly higher in order to achieve efficient emission control.

AUTOSTART (ONLY 3.2 AND V8)

Turn the ignition key/dial to position **III** and release. The engine starts automatically.

Diesel engines must always be preheated in position **II** before the engine is started.

WINDSCREEN WIPERS AND RAIN SENSOR*



Single sweep



Off



Intermittent wiping. Turn (2) to adjust.



Normal speed



High speed



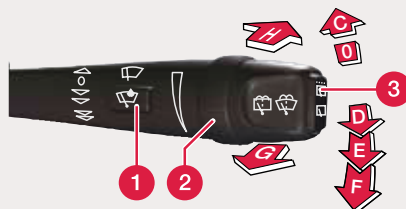
Windscreen and headlamp washing



Rear window washer



Rear window wiper intermittent/normal



Activates rain sensor. Position **D-F** deactivates rain sensor.



Adjust sensitivity using the thumb-wheel.



Display symbol for rain sensor On.

LIGHT SWITCHES



- 0** **Automatic dipped beam** and main beam flash. Main beam cannot be activated.
- Parking lamps**
- Dipped beam**, switches off when the ignition is switched off. Main beam can be activated.
- Headlamp levelling**, automatic for Bi-Xenon lights*
- Display and instrument lighting**
- Fog lamps**, front
- Rear fog lamp**, one lamp
- A** **Main beam flash**
- B** **Main/dipped beam switching and approach lighting.**



CONTROL PANEL IN DRIVER'S DOOR



L R **Adjusting the door mirrors**, select L or R. Set with the lever.

1 **Manual windows**

2 **Automatic windows**

— D **Locks/unlocks all doors, fuel filler flap/tailgate.**

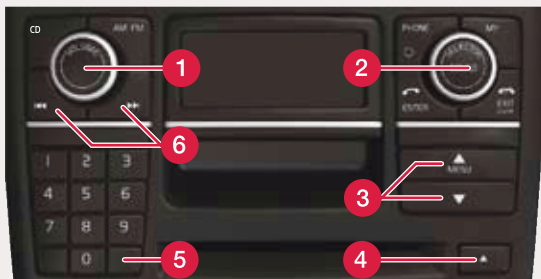
✗ **Deactivates rear power windows.**

CAR CARE



Washing by hand is gentler to the paintwork than an automatic car wash. The paintwork is also more sensitive when it is new. For this reason, handwashing is recommended during the first few months with a new car.

Leather upholstery requires regular cleaning. Treat with leather care products, once to four times per year or as necessary. Leather care products are available at your Volvo dealer.



1 On/Off and audio volume, press for On/Off. Turn to adjust the volume. Audio volume settings for Radio, TP, phone* and RTI* are stored individually.

2 Sound pattern. Press to select e.g. BASS, Dolby II* or SUBWOOFER*. Turn to adjust.

2 Audio source. Turn for **FM1**, **FM2**, **AM**, **CD** or **AUX**¹.

RADIO

5 Autostoring stations.

Press **AUTO** for approx. 2 seconds. The ten strongest stations are stored. Press **0-9** to select a station.

6 Search for station automatically/manually

One short press starts automatic search. One long press starts manual. One long press on **0-9** stores stations, FM1/FM2 store 10 stations each.

CD PLAYER

3 Change CD disc² also buttons **1-6** on the keypad (5).

4 Ejecting a disc. One short press ejects the current disc. One long press ejects all².

6 Change track

1. AUX input for e.g. MP3 player.

2. Only CD changer*.

REFUELLING



Hang up the fuel cap during refuelling.

REGENERATION (DIESEL)



Diesel cars are equipped with a particle filter, which results in more efficient emission control. The particles in the exhaust gases are collected in the filter during normal driving. So-called "regeneration" is started automatically in order to burn away the particles and empty the filter. Engine power may be slightly reduced during regeneration.



AUTOMATIC CONTROL

In **AUTO** mode the ECC system controls all functions automatically making driving simpler with optimum air quality.

1 Temperature

Turn to required temperature.

2 Automatic

Press **AUTO** for automatic control of set temperature and other functions.

MANUAL CONTROL



Fan speed



Air distribution



Defroster to quickly remove misting from the windscreen and side windows.



Air quality system On press **AUT.**
Recirculation On press **MAN.**



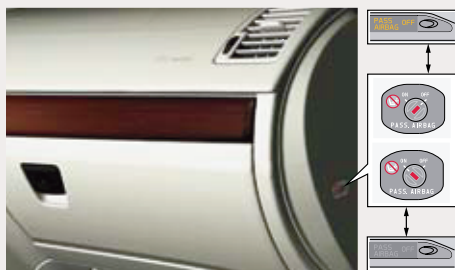
AC Air conditioning On/Off.



Rear window and door mirror defrosters. Automatic deactivation¹

1. Rear window 12 minutes. Mirrors 6 minutes.

PACOS*, DEACTIVATING THE AIRBAG



WARNING

Incorrect use could endanger life. Consult the Owner's Manual if you have the slightest doubt about its use.

PACOS (Passenger Airbag Cut Off Switch)

Use the ignition key to switch **ON/OFF**.

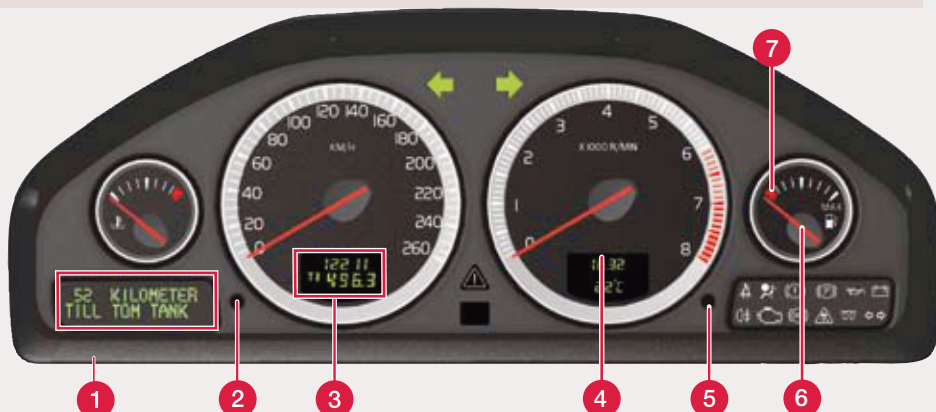
OFF: The airbag is deactivated.

PASS AIRBAG OFF is shown in the warning lamp above the interior rearview mirror.

A child can sit on a booster cushion or child seat in the front seat **but never passengers taller than 140 cm.**

ON: The airbag is activated.

Passengers taller than 140 cm can sit in the front seat **but never a child on a booster cushion or child seat.**



TRIP COMPUTER



- 1 Display for trip computer.** Set the trip computer using (9).
- 8 Press** to clear a message.
- 9 Turn** to show e.g. KILOMETRES TO EMPTY TANK in the display (1).
- 10 Resets current function**

FUEL

- 6 Fuel gauge**
- 7 Low fuel level**

The lamp illuminates when 8 litres of fuel remain in the tank (diesel cars: 7 litres).

TRIP METER

- 3 Display** shows two independent trip meters, **T1** & **T2**.
- 2 Switch between T1 & T2** with one short press. Reset the current meter with one long press.

CLOCK

- 5 Turn to stop** and hold to set the clock (4).



IMPORTANT

Range to empty fuel tank is an estimate of possible distance based on earlier driving conditions.

INDICATOR AND WARNING LAMPS



Read in information display.



Fault in brake system, stop safely. Check the brake fluid¹.



Stop safely, rectify the fault as per information display.



DSTC* stability system, flashes when the system is operating.



Low oil pressure, stop safely. Check the oil level¹.

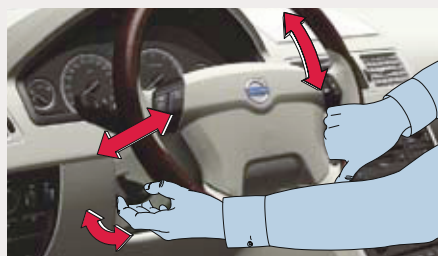
1. Have the car towed if the symbol remains visible.

DIRECTION INDICATORS



- A. Short sequence, **three flashes**.
- B. **Continuous** flash sequence.

ADJUSTING THE STEERING WHEEL



WARNING! Adjust the steering wheel before setting off, never while driving.

BLIS – BLIND SPOT INFORMATION SYSTEM*



If the BLIS' indicator lamp illuminates on isolated occasions despite there being no other vehicle within the blind spot then this does not mean that a fault has arisen in the system. In the event of a fault in the BLIS system the display shows the text **BLIND-SPOT SYST SERVICE REQUIRED**

EMERGENCY BRAKE ASSIST, EBA



Emergency Brake Assistance helps to increase brake force and so reduce braking distance. When EBA is activated the brake pedal lowers slightly more than usual, depress (hold) the brake pedal as long as necessary. If the brake pedal is released then all braking ceases.

LOWERING THE REAR SEAT BACKRESTS



Third row of seats* (cars seating seven)

Slide the second row of seats to its front position.

- A. Lift the handle up.
- B. Slide the seat cushion into its rearmost position and fold in the lashing eyelets.
- C. Fold the backrest forward.



Second row of seats

Set the seats in the rearmost position (only applies to cars seating seven).

- A. Pull out the eyelet.
- B. Lower the head restraint.
- C. Release the catch.
- D. Fold the backrest forward and press down to lock the backrest in lowered position.

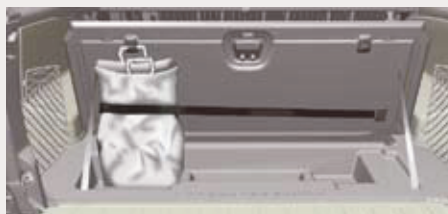
The front passenger seat can also be lowered. See Adjusting the front seat in point 6.

ADJUSTING THE FRONT SEAT



- 1 Lumber support
- 2 Backrest rake
- 3 Raise/lower seat
- 4 Seat cushion front edge raise/lower
- 5 Forwards/backwards
- 6 Lowering the passenger seat backrest

BAG HOLDER



STORAGE SPACES, 12 V SOCKET & AUX



12 V socket in centre console **front/rear** works in ignition position **I** or higher.

12 V socket on right-hand side in **cargo area** is always active.

Using the **AUX output** (behind the lower section of the climate control system panel) the car's audio system can playback music from an MP3 player etc.



IMPORTANT

Using the 12 V socket in the cargo area when the engine is switched off could discharge the battery.

