







S 60

WEB EDITION
QUICK GUIDE

WELCOME TO YOUR NEW VOLVO!

This folder contains a selection of the most common functions in your particular car. The owner's manual and other manuals contain important information with all warnings and safety instructions.

The following symbols mean:

-  Different parts are pointed out in the overview images.
-  Instructions step-by-step.
-  It is particularly important to read the owner's manual.
-  Important information, warnings and safety instructions that must be read are listed on the last page.

Options are marked with an asterisk *.

In addition, learn more about your particular car at www.volvocars.com.

01 Starting and driving

- Remote control key
- Keyless key system*
- Starting and switching off the engine
- Parking brake
- Wipers

02 Driver support in your car

- Park Assist Pilot*
- Lane Keeping Aid*
- BLIS* and CTA*
- Start/Stop function*
- Pedestrian protection*

03 Your driving environment

- Adjusting the seat
- Adjusting the steering wheel
- Folding the rear seat

04 Functions in your car

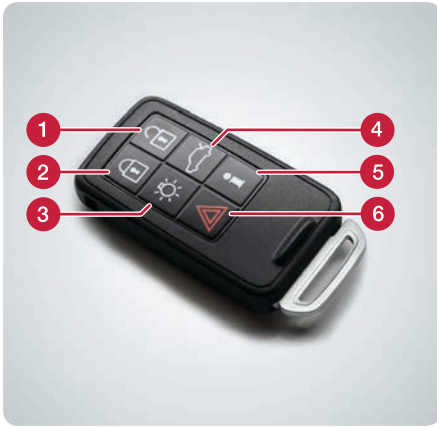
- Climate system controls
- Headlamp control
- Combined instrument panel
- Infotainment system
- Phone*
- Internet*
- External audio device
- Buttons in the centre console
- Settings in the menu system

05 Tips

- Refuelling
- Car care
- Storage spaces
- AUX/USB* and 12 V sockets

How does the remote control key work?

01



- 1 Unlocks doors and boot lid and disarms the alarm*. Can be set in **MY CAR**.
- 2 Locks doors and boot lid and arms the alarm.
- 3 Approach light duration.
- 4 One press unlocks the boot lid, two presses open it slightly.
- 5 Information* about the car.
- 6 Panic function.

The remote control key can store settings including door mirrors and power driver's seat* – see the owner's manual.



What do the remote control key indicator lamps* show?

01



- 1 Green constant light: The car is locked.
- 2 Yellow constant light: The car is unlocked.
- 3 Red constant light: The alarm has been triggered.
- 4 Red light flashing alternately in both indicator lamps: The alarm was triggered less than 5 minutes ago.



How does the Keyless key system* work?

01



The key can remain in your pocket for example the whole time.

Lock and arm the alarm

- Touch the rear section of one of the outer door handles or press lightly on the smaller of the boot lid's two rubberised buttons.

Unlock and disarm the alarm

- Grip a door handle and open the door in the usual way or press lightly on the larger of the boot lid's two rubberised buttons.





How do I start the engine?

01

- 1 Press the remote control key into the ignition switch.
- 2 Depress the clutch or brake pedal.
- 3 Briefly press the **START/STOP ENGINE**-button and release – the engine starts.



How do I switch off the engine?

01

- 1 Briefly press the **START/STOP ENGINE**-button – the engine stops.
- 2 Take the remote control key out from the ignition switch.



How do I use the parking brake?

01

To apply

- 1 Depress the foot brake pedal.
- 2 Press the control **PUSH LOCK/PULL RELEASE** - the combined instrument panel's warning symbol starts to flash. Once there is a constant glow the parking brake is applied.
- 3 Release the foot brake pedal.

To disengage

- 1 Depress the foot brake pedal.
- 2 Pull the control **PUSH LOCK/PULL RELEASE**.



How do I start the windscreen wipers and rain sensor*? 01

Move the lever downward to start the windscreen wipers and upward for a single sweep.

- 1 Rain sensor On/Off.
- 2 Regulates the sensor sensitivity or the intermittent delay.



How do I use Park Assist Pilot PAP*? 02

PAP checks the available space, and then steers in the car. Your task is to select the gear, control the speed and brake/stop.

- 1 Activate PAP with a press of the button. Do not drive faster than 30 km/h.
- 2 Follow the instructions that are shown in the combined instrument panel.
- 3 Be prepared to stop the car when the graphics and text advise this.

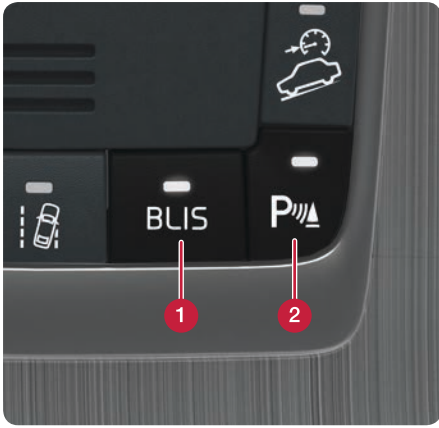


What is the function of the Lane Keeping Aid LKA*? 02

If the car is about to cross a side line the LKA will actively steer back into the lane with a slight steering torque in the steering wheel. If the car crosses a side line then LKA will warn you with pulsating vibration in the steering wheel.

- Activate LKA with a press of the button.





Blind Spot Information System advises about vehicles in the blind spot and rapidly approaching vehicles. **Cross Traffic Alert** warns of crossing traffic during reversing.

BLIS and CTA are activated when the engine is started.

- 1 BLIS On/Off.
- 2 CTA On/Off - operated with the same button that is used for the parking sensors*.



Parking sensors – see the owner's manual.



Manual gearbox

Stop the engine: Declutch, move the gear lever into neutral position and release the clutch pedal.

Start the engine: Depress the clutch pedal.

Automatic gearbox

Stop the engine: Stop the car with the foot brake and then maintain the brake pressure.

Start the engine: Release foot pressure on the foot brake.

Illuminated button lamp indicates that the function is active.



The car has Collision Warning with Auto Brake and Cyclist and Pedestrian Detection, which can warn, brake and/or stop for vehicles, cyclists and pedestrians.

The function is only an aid and does not work in all situations – for example, it does not see cyclists from the side, pedestrians who are shorter than 80 cm or who are partially obscured.



It is important to understand this function thoroughly – see the owner's manual.

How do I adjust the seat?

03



- 1 Raise/lower the front of the seat cushion.
- 2 Raise/lower seat.
- 3 Move the seat forward/backward.
- 4 Tilt the backrest.
- 5 Store settings for power seat*.
- 6 Memory buttons for power seat*.



Store setting:

Hold the button depressed to store settings while depressing one of the memory buttons.

Seat settings for a power seat can also be stored in the remote control key* – see the owner's manual.



How do I adjust the steering wheel?

03



- 1 Release the catch.
- 2 Adjust the steering wheel forward/backward and up/down.
- 3 Activate the catch.



How do I fold down the rear seat?

03

The two-section backrest can be folded forward – both sections together or separately.

- 1 Pull on the required handle. They are located just inside the hatch opening.
- 2 Fold the backrest forward. Fully lower the centre head restraint if the wide section of the backrest shall be folded down.



Lowering the head restraints – see the owner's manual.



How do I regulate the temperature?

04

- 1 Turn for individual temperature in the left/right-hand area of the passenger compartment. The screen shows the selected temperature.
- 2 Press **AUTO** for automatic control of air distribution and other functions. The screen shows **AUTO CLIMATE**.



How do I defrost the windscreen?

04

- 1 Press to activate the windscreen's electric heating* - symbol (1) in the screen illuminates.
- 2 The next press also activates maximum airflow against windscreen and side windows - symbols (1) and (2) illuminate.
- 3 The next press switches off both of the functions - no symbol illuminates.

Without electric heating: Press to activate/deactivate the air flow.



How does the headlamp control's auto mode work? 04

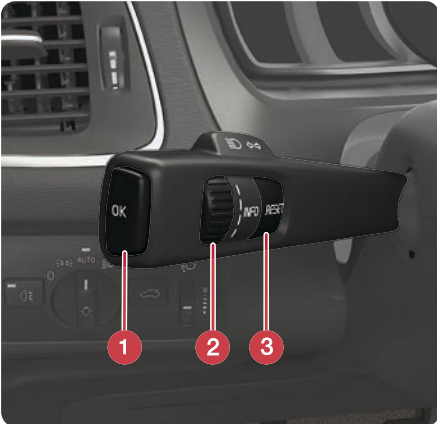


AUTO mode provides the following options:

- The daytime running lights automatically switch between daytime running lights and dipped beam.
- Main beam can be activated when dipped beam is switched on.
- Active high beam (AHB)* – that dims and activates main beam automatically, or adapts the main beam pattern to the traffic conditions, – can be used.
- Tunnel detection* is activated.



How is the trip computer operated? 04



- 1 **OK** opens the trip computer's menu, activates the selected option and extinguishes messages.
- 2 Thumbwheel scrolls between the trip computer options.
- 3 **RESET** resets data in the selected trip computer step and goes back in the menu structure.



How do I reset the trip meter? 04



- 1 Turn the left-hand stalk switch thumbwheel to show trip meter T1 or T2.
- 2 Give a long press on the **RESET** button in order to reset the trip meter shown.



How does the range/"km to empty tank" work?

04

The combined instrument panel shows an estimation of the possible driving distance based on previous driving conditions and remaining fuel quantity.

No guaranteed range remains when "---- km" is shown. Refuel as soon as possible. The illustration shows the digital* combined instrument panel.




Analogue combined instrument panel – see the owner's manual.



How do I navigate in the infotainment system?

04

- 1 Press **RADIO**, **MEDIA**, **MY CAR**, **NAV***, **TEL*** or  to select main source.
- 2 Press **OK/MENU** or the thumbwheel* in the steering wheel to access the selected source's main menu.
- 3 Turn **TUNE** or the thumbwheel to navigate in the menus.
- 4 Press **OK/MENU** or the thumbwheel to make a selection in the menus.

Briefly press **EXIT** to go back in the menu system, cancel a function or delete entered characters.

Give a long press on **EXIT** to go back to normal view, or to go from normal view to the main source view.

Tips:

To go to the shortcut menu in the NAV or TEL mode, press once on **NAV** or **TEL**. Press again to go back to normal view.





How do I switch on and off the Infotainment system?

04

- 1 A short press activates the system.
- 2 A long press (until the screen switches off) deactivates.

To switch off the sound (MUTE): Give a short press - the next press reactivates.

Note that the whole of the Sensus system (including navigation* and phone functions*) starts/switches off at the same time.



How do I connect a Bluetooth® phone and to the Internet*?

04

- 1 Press **TEL*** in the centre console.
- 2 Make the mobile phone searchable/visible via Bluetooth®.
- 3 Press **OK/MENU** and follow the instructions on the screen. The phone is now connected and can be controlled from the car. The car's Internet services can now be used.

In future the phone will be connected to the car automatically.



If the connection fails – see the owner's manual.




What services do I get with Volvo ID*?

04

Volvo ID is your personal ID registered to the car which can give you access to various services such as My Volvo web and the ability to send an address from the map service on the internet directly to the vehicle.

Register or manage your Volvo ID as follows:

- 1 Press the Connect button .
- 2 Select **Apps > Settings** and follow the onscreen instructions.


For further information about Volvo ID - refer to the owner's manual.





How do I use apps when the car is connected to the internet*? 04

When the car is connected to the internet, apps for music services, web radio, navigation services and simple web browsers can be used.

- 1 Press the Connect button .
- 2 Select **Apps** and press **OK/MENU** in order to show the available apps.
- 3 Select the app and confirm with **OK/MENU**.


Some apps require login using a separate account from the app/service supplier. Use existing account or register again. Follow the on-screen instructions.



How do I make a call? 04

- 1 Press **TEL*** in the centre console.
- 2 Enter the required number or turn the thumbwheel on the steering wheel downward in order to access the phone book, and upward for the call register.
- 3 Press the thumbwheel to dial.

The call is interrupted with a press on **EXIT**.


For more ways to make a call with the phone – see  the owner's manual.



How do I answer the phone*? 04

- Press the thumbwheel to accept incoming calls.

The call is rejected/interrupted with a press on **EXIT**.

For more ways to answer the phone – see the  owner's manual.



How do I connect an external audio device? 04

- 1 Connect an external device via the AUX input or USB* port in the centre console.
- 2 Press **MEDIA**.
- 3 Turn **TUNE** to the desired audio source.
- 4 Press **OK/MENU**.

For other connections of an external device – see the owner's manual.



How do I set a GPS* destination? 04

- 1 Press **NAV** to start the navigation system - a map is shown.
- 2 Press once again on **NAV** and select **Enter address** with **OK/MENU**.
- 3 Enter a search criterion/search criteria using the daisy wheel or the centre console's numeric keypad.
- 4 Then select **Set single destination** or **Add as waypoint** and press **OK/MENU**.

For more information and market deviations regarding navigation - see the separate supplement*.



How do I set the clock? 04

- 1 Navigate to **Settings > System settings > Time settings** in **MY CAR**.
- 2 Turn **TUNE** to **Automatic time** and press **OK/MENU** to activate automatic setting of the time.

Make sure you select the current location in order to set the correct time in the car.

How do I refuel?

05

- Press the button on the lighting panel to open the fuel filler flap - the flap opens when the button is released.
- The arrow on the symbol in the combined instrument panel shows which side of the car the fuel cap is located on.



How should I wash the car?

05

Handwashing is gentler on the paintwork than an automatic car wash. The paintwork is also more sensitive when it is new. For this reason, handwashing is recommended during the first few months with a new car.

Use clean water and a washing sponge. Remember that dirt and grit can scratch the paintwork.



How should I clean the leather upholstery*? 05

Leather requires regular care in order to maintain appearance. For this reason, the leather upholstery should be treated using the Volvo Leather Care kit 1-4 times per year. The Volvo Leather Care kit is available for purchase from a Volvo dealer.



Where are the storage spaces located?

05

Shown here are some of the car's storage spaces.



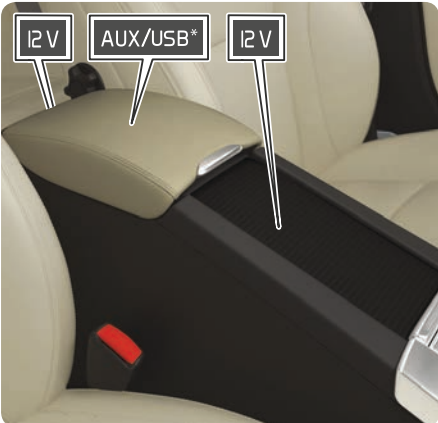
The owner's manual shows the location of more storage spaces.



Where are the AUX/USB* and 12 V sockets located?

05

The remote control key must be at least in key position I in order for the 12V sockets* in the passenger compartment to work. The 12V socket in the cargo area is always live.



How does the Keyless key system* work?



The use of gloves may prevent the Keyless function in the door handles. Electromagnetic fields and screening can interfere with the Keyless function. Do not place/store the remote control key near a mobile phone or metal object.

How do I start the engine?



After a cold start the idling speed is high irrespective of outside temperature. It is part of Volvo's efficient emissions system. During cold starting, certain diesel engines have a delayed start due to preheating.

How do I use Park Assist Pilot PAP*?



PAP does not work in all situations but is designed simply as a supplementary aid. The driver always bears ultimate responsibility for ensuring that the vehicle is driven safely, and for having an overview of the surroundings and other road users approaching or passing while parking.

How do I use Lane Keeping Aid LKA*?



LKA is only a driver tool, and does not work in all driving situations and traffic, weather and road conditions. The driver is always responsible that the vehicle is driven in a safe manner and that laws and traffic regulations in force are followed.

What is the function of BLIS* and CTA*?



BLIS and CTA are supplements – not substitutes – for a safe driving style and the use of rearview and door mirrors. The assistance from BLIS and CTA can never replace the driver's responsibility and attention. Responsibility for changing lanes safely and reversing in a safe manner always rests with the driver. BLIS does not work in sharp bends. BLIS does not work when the car is reversing.

How does the pedestrian protection work*?



The function cannot detect all pedestrians in all situations and does not see, for example, partially obscured pedestrians, people in clothing that hides their body contour or pedestrians shorter than 80 cm. The function cannot detect all cyclists in all situations and does not see, for example, partially obscured cyclists, cyclists with concealed body contours or cyclists approaching from the side. The driver is always responsible that the vehicle is driven in a correct manner and with a safety distance adapted to the speed.

How do I adjust the seat?



Adjust the driving position of the driver's seat correctly **before** setting off – never while driving. Make sure that the seat is in locked position in order to prevent personal injury in the event of sudden braking or an accident.

How do I adjust the steering wheel?



Adjust the steering wheel (after adjusting the seat) **before** setting off – never while driving.

How do I fold down the rear seat?



Make sure that the backrests correctly locked after raising, in order to prevent personal injury in the event of sudden braking or an accident. There must not be any objects in the rear seat when the backrest is being folded down. The seatbelts must not be buckled up. Otherwise there is a risk of damage to the rear seat's upholstery. When the backrests have been folded down the head restraints must be moved forward slightly to avoid catching in the seat cushion.

How does the range/"km to empty tank" work?



A degree of incorrect indication may occur if the driving style is changed.

How do I connect a Bluetooth® phone and to the Internet*?



Using the Internet involves transferring data (data traffic), resulting in a charge to your network operator. Contact your network operator about the cost for data traffic.

How should I clean the leather upholstery*?



Some coloured clothing (e.g. jeans and suede garments) may discolour the upholstery. Never use strong solvents – they could damage the upholstery.

Where are the AUX/USB* and 12 V sockets located?



Maximum. current take-off is 10 A (120 W) in each socket.