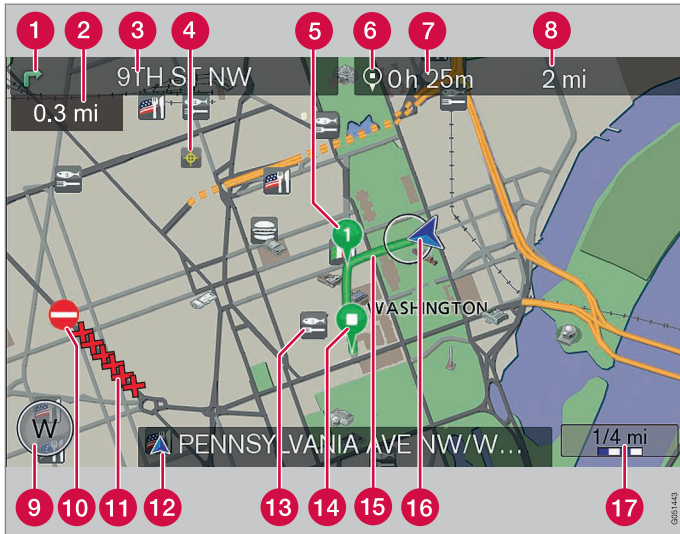




WEB EDITION
SENSUS NAVIGATION



Text and symbols on the screen

- 1 Direction to take at next guidance point
- 2 Distance to the next guidance point
- 3 Name of the next street or road
- 4 Stored location
- 5 Intermediate destination
- 6 Symbol for destination
- 7 Calculated remaining time to destination
- 8 Calculated remaining distance to destination
- 9 Compass
- 10 Traffic information
- 11 Extent of street/road with traffic problem
- 12 Current road (the vehicle's current location [16])
- 13 Symbol for a Point of Interest – POI (Seafood restaurant)
- 14 Final destination
- 15 Route
- 16 The vehicle's current location
- 17 Map scale

Types of roads	Color
Freeways	 Orange
Main roads	 Dark gray
Secondary main roads	 Gray
Normal roads	 Light gray
Local roads	 White

SENSUS NAVIGATION WITH RTT



RTT¹ (Real Time Traffic) is an information system developed by Volvo, which can detect roads/streets with traffic disruptions and make it possible to select an alternative route past the problem area.

The system includes features that enable you to set itineraries, search for certain types of points of interest along your route, store special destinations, obtain traffic information en route, etc.

The system indicates the vehicle's current location, and shows part or all of the route to your

destination, depending on the settings you have made. If at any time you should decide to deviate from the route originally set by the system, a new route to the destination will automatically be calculated.

By enabling you to reach your destination quickly and by the most direct route, Volvo's navigation system also helps contribute to improving the environment.

¹ Option. Not available in all markets.





01 Getting started

Activating the system.....	9
Navigation system controls – quick guide.....	9
Guidance to a destination.....	10

01



02 Getting to know the system

Before you begin.....	13
Owner's information.....	13

02



03 Controls

Sensus Navigation system overview.....	16
Controls – introduction.....	19
Center console controls.....	19
Controls on the steering wheel keypad....	20
Remote control.....	20

03



04 Voice control

Voice control introduction.....	22
Using voice commands.....	23
Voice control help functions and settings.	23
Selecting a voice control language.....	25

04



05 The text wheel

Entering text and making selections.....	28
--	----

05



06 Maps, compass and voice guidance

Map views – several examples.....	31
Compass.....	34
Voice guidance.....	34

06



07 Menus

Menus system.....	36
Shortcuts.....	36
Main menu.....	37
Scroll mode (menu).....	38
The menu structure (tree).....	39

07



08 Setting a destination

Setting a destination.....	43
Search using Home.....	43
Search using an address.....	44
Search using a Point of Interest (POI).....	46
Search using a stored location.....	47
Search using a previous destination.....	48
Search using the Internet.....	48
Search using a zip code.....	49
Search using latitude/longitude.....	49
Search using a position on the map.....	50
Search using Travel guide.....	51

08



09 Setting an itinerary

Creating an itinerary.....	53
Intermediate destinations (waypoints) in an itinerary.....	54

09



10 Planning a route

Avoiding sections of a route.....	56
Alternative routes and route overview.....	56
Detailed route information.....	57
Map of the remaining part of the route.....	58
Recording a route.....	59

10



11 Settings

Route options.....	61
Route options – avoiding areas.....	63
Adapting a route.....	64
Map options.....	65
Guidance options.....	67
System information.....	71
The FAV button.....	71
Import/export stored destinations.....	71

11



12 Traffic information

Traffic information.....	74
Traffic information – with no destination selected.....	74
Traffic information with a specified destination.....	75
Extent of a traffic problem.....	77

12



13 Symbols on the map

Points of Interest (POI)..... 80

13



14 Questions & answers

General information/frequently asked questions..... 83

14



15 Map and system information

Maps – content..... 86
Map updates..... 86
License agreement..... 87
Copyrights..... 93

15



16 Index

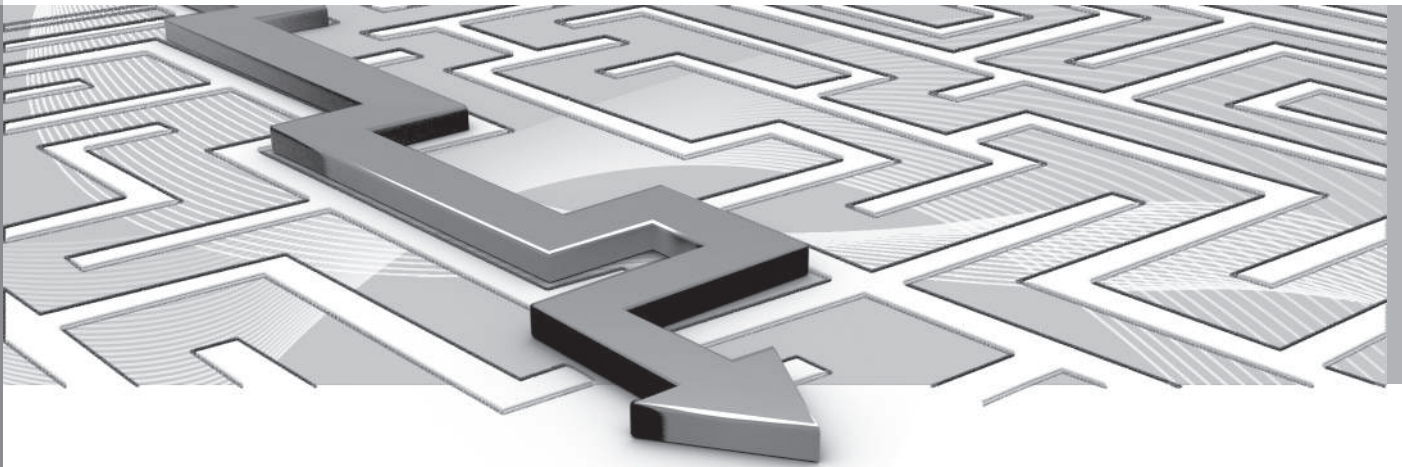
Index..... 96

16

01



GETTING STARTED



Activating the system

The ignition must be switched on before the navigation system can be used.

ON

1. Press the remote key fully into the ignition slot.
2. If the system does not start within a few seconds, press **NAV** on the center console.

It may then take several seconds for the system to detect the vehicle's location and direction. A map showing your current location will then be displayed. Your vehicle is shown as a blue triangle on the map.

WARNING

Observe the following.

- Direct all your attention to the road and make sure that all your concentration is on driving.
- Follow applicable traffic legislation and drive with good judgment.
- Due to weather conditions or time of year affecting the road conditions, some recommendations may be less reliable.

Off

The navigation system cannot be turned off but instead is active in the background when

not displayed on the center console screen. However, it switches off automatically when the ignition is switched off.

NOTE

The system can be used even when the engine is not running but will be switched off automatically if the battery charge level is low.

Navigation system controls – quick guide

Volvo's Sensus Navigation system can be operated in several ways:

- By using the right-side steering wheel keypad (p. 20).
- By using the controls on the center console (p. 19).
- By using voice commands (p. 22).

See also (p. 19).

Main controls

Both of the following examples are based on the steering wheel keypad.





01 Getting started

01



- Scroll/select by turning/pressing the **thumb wheel** (1).
- Activate selections by **briefly pressing** the **thumb wheel** (hereafter referred to in the examples as "**+** **OK**").
- Go back in a menu and/or cancel a selection by pressing **EXIT** (2).

Center console controls

The following apply if the **center console controls** are used instead of the steering wheel keypad:

Steering wheel keypad	Center console controls
Turn the thumb wheel	Turn TUNE
Press the thumb wheel	Press OK/MENU
Press EXIT	Press EXIT

Related information

- Activating the system (p. 9)
- Guidance to a destination (p. 10)
- Controls – introduction (p. 19)

Guidance to a destination

Guidance can be set to a destination or a point of interest (POI).

The navigation system calculates a route, travel time and the distance to the selected destination. It provides guidance and instructions at turns, intersections, etc.

If you leave the planned route during your trip, the system will automatically recalculate a new route.

Searching for an address

Step	Screen/ menu	Action
1	If a map is not displayed on the screen:	Press NAV on the center console.
2	Map displayed	Press NAV to display the " Shortcuts " menu.
3	Shortcuts menu, see (p. 36).	Select Set address + OK .
4	Address	Scroll to City: + OK .

Step	Screen/ menu	Action
5	Text wheel, see (p. 28).	Turn the thumb wheel to select characters and enter them by pressing OK : a list will be compiled on the screen.
6	Text wheel	Select a suitable destination from the list + OK .
7	Same view on the screen as number 4, with City: filled in.	Scroll to Set single destination + OK .
8	Map displayed	Guidance will begin; follow the directions given.

For detailed information about searching for a destination using an address, see (p. 44).

**Searching for a point of interest (POI)**

Step	Screen/ menu	Action
1	If a map is not displayed on the screen:	Press NAV on the center console.
2	Map displayed	Press NAV to display the " Shortcuts " menu.
3	Shortcuts menu, see (p. 36).	Scroll to Set point of interest + OK .
4	Point of interest (POI)	Select e.g., Near the car + OK .
5	" Near the car " menu and Results list .	Select e.g., Nearest tourist attraction + OK .
6	Results list	Select an alternative in the list + OK .

Step	Screen/ menu	Action
7	Pop-up menu	Scroll to Set single destination + OK .
8	Map displayed	Guidance will begin; follow the directions given.

For detailed information about searching for a destination using a POI, see (p. 46) and (p. 80).

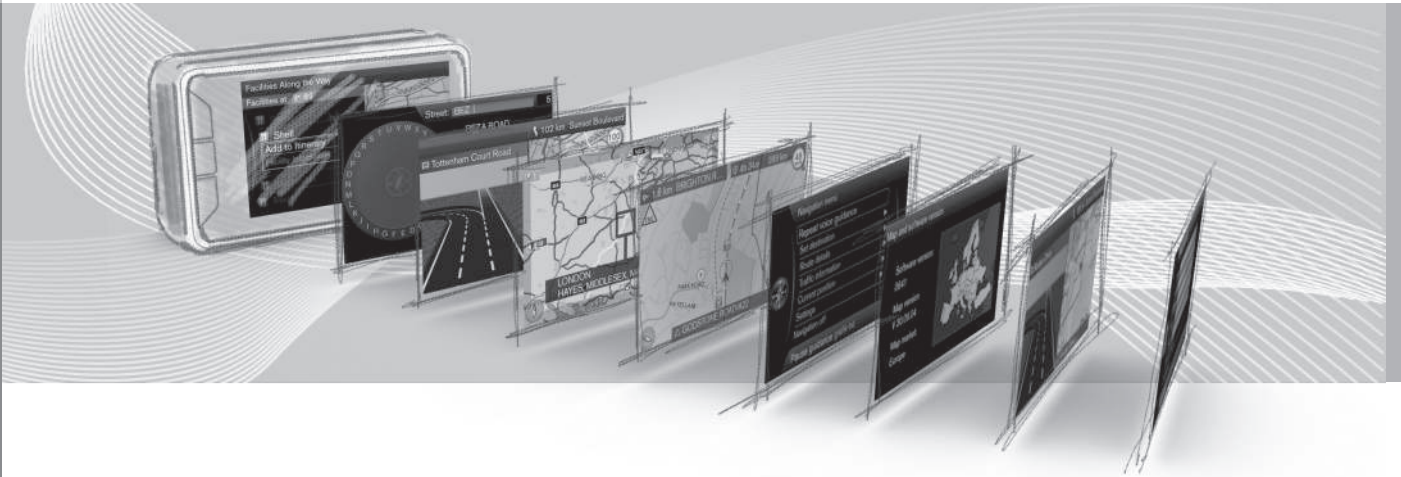
Related information

- Activating the system (p. 9)
- Navigation system controls – quick guide (p. 9)

02



GETTING TO KNOW THE SYSTEM





Before you begin

You should be familiar with the following information before you begin using the navigation system.

General information

Volvo's Sensus Navigation uses the WGS84 reference system, which provides the vehicle's location in terms of longitude and latitude.

The navigation system can be used even if a destination has not been specified.

Points to remember

The navigation system provides guidance and road/traffic information to a preselected destination. The information may not always be accurate due e.g., to sudden changes in the weather, etc.

WARNING

- Always use good judgment when following navigation system guidance, and do not follow guidance that seems contrary to your own best judgment.
- Never use the navigation system or any other feature in your vehicle in a way that distracts you from the task of driving safely. Distraction can lead to a serious accident.
- Set and make changes in your navigation system only with the vehicle parked.
- Be aware of the current traffic situation.
- Always comply with relevant traffic regulations.

Settings

The system is installed in the vehicle with factory default settings but if you have made personal settings, the system will use the most recent ones the next time the ignition is switched on.

Owner's information

Reading the owner's information is good way to become familiar with the Sensus Navigation system.

Using the owner's information

A quick guide is available to help you get started with the basic functions as quickly as possible, see (p. 9).

The rest of the owner's information provides more detailed descriptions of the navigation system's features and functions.

Menu selections/paths

Menu selections are shown in gray text, for example: **Set destination**.

Menu paths are written as follows, e.g.,:

Set destination → **Address** → **City**:

Footnotes

Certain articles in this information contain information in the form of footnotes. This information supplements the text that the footnote number refers to (a letter is used if the footnote refers to text in a table).

Options and accessories

Optional or accessory equipment described in this manual is indicated by an asterisk (*).

Optional or accessory equipment may not be available in all countries or markets. Please note that some vehicles may be equipped dif-



02 Getting to know the system



ferently, depending on special legal requirements.

Contact your Volvo retailer for additional information.

Changes in the information

The specifications, design features, and illustrations provided are not binding.

We reserve the right to make modifications without prior notice.

© Volvo Car Corporation

Related information

- Before you begin (p. 13)
- Activating the system (p. 9)
- Sensus Navigation system overview (p. 16)

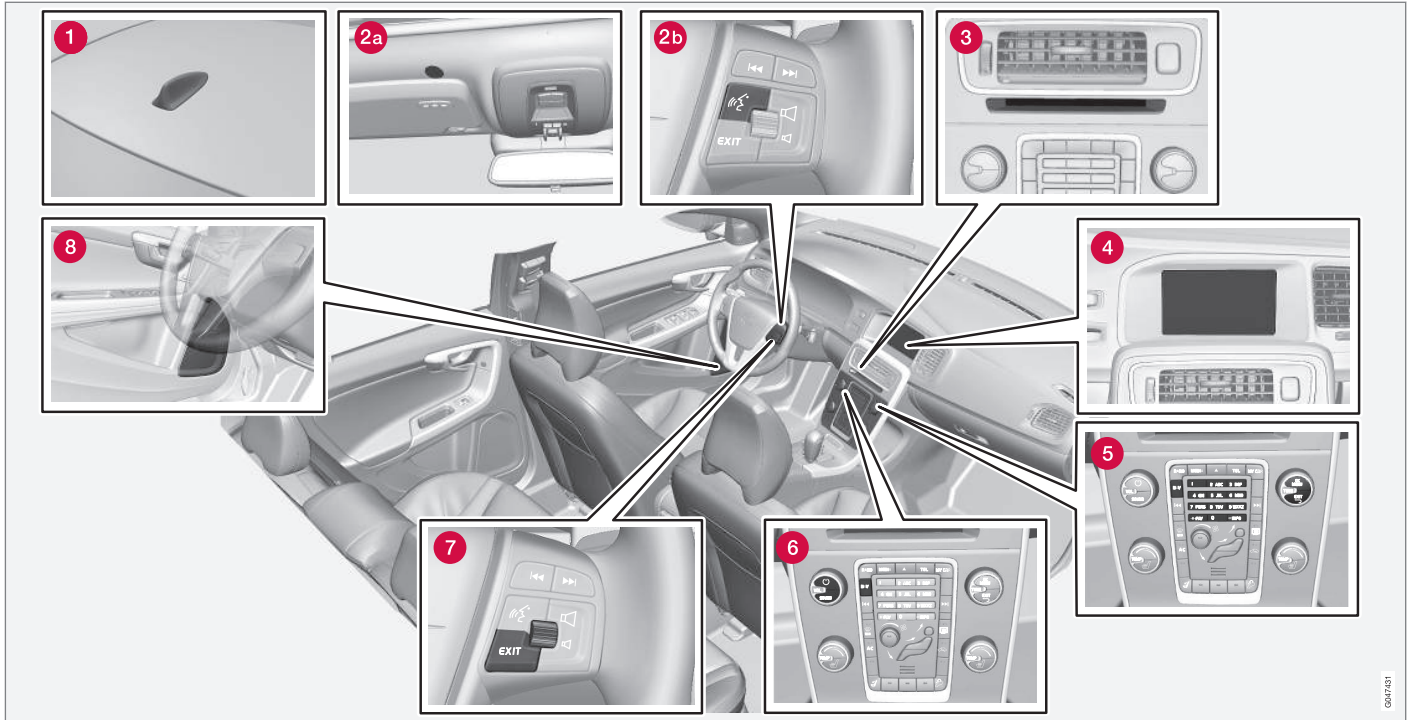
03

CONTROLS





Sensus Navigation system overview



The illustration is generic and may vary from model to model

0A17231



1 Global Positioning System (GPS) antenna

The antenna is integrated into the roof module.

2 Voice control

A number of features can be controlled with voice commands. The microphone (2a) is located in the ceiling liner above the driver's side sun visor and the voice control button (2b) is located on the right-side steering wheel keypad. For more information, see (p. 22).

3 Main unit

The main unit is located in and behind the center console and includes the following functions:

- Determine the vehicle's location (p. 31)
- Calculate a route to the selected destination (p. 43)
- Provide traffic information (p. 74)
- Voice guidance (p. 34)

The GPS receiver and the Traffic Message Channel (TMC) function are also integrated into the main unit.

Vehicle location

Using signals from the Global Positioning System (GPS), the speedometer and a gyroscopic sensor, the system calculates the vehicle's current location and direction.

The advantage of this concept is that it also makes it possible to calculate direction and location if the GPS signal is temporarily interrupted, such as when driving through a tunnel.

Traffic information (TMC)

TMC is a standardized code system for transmitting traffic information. The receiver automatically tunes to the correct frequency and reception is handled by the audio system's FM antenna.

NOTE

TMC is not available in all areas. The area covered by the system is being steadily expanded, which makes occasional updates necessary.

4 Screen

The screen displays the maps and provides detailed information about routes, distances, etc.

Screen care

Clean the display screen with a soft, non-static cloth or a moist paper towel and a mild window cleaning agent. Never use petroleum based solvents or abrasive substances when cleaning the screen.

CAUTION

Do not place any objects in front of the navigation system's screen. This could scratch its surface. Cell phones could also interfere with the screen's function.

5 Center console controls

The number keys in the center console can be used together with the **OK/MENU**, **TUNE** and **EXIT** buttons to scroll in menus, confirm a selection or go back in a menu. For additional information, see (p. 19).

6 Volume control and IR receiver

Use the vehicle's audio system volume control during voice guidance to raise or lower the volume, see (p. 34). The volume can also be adjusted in the menu system.

Point the remote control toward the center console, where the Infrared (IR) transceiver is located.

7 Steering wheel keypad

The thumb wheel on the steering wheel keypad can be **turned** to navigate in lists and menus and **pressed** to confirm a selection. Use the **EXIT** button to go back in a menu or to cancel a selection, see (p. 20).

8 Speakers

Sound from the navigation system comes from the infotainment system's front speakers.



03 Controls



Related information

- Controls – introduction (p. 19)

03



Controls – introduction

This article provides general information about the navigation system controls.

The navigation system is operated using controls on the steering wheel keypad (p. 20), on the center console (p. 19) or on the remote control (p. 20)¹. All of the alternatives offer similar functionality.

Voice guidance

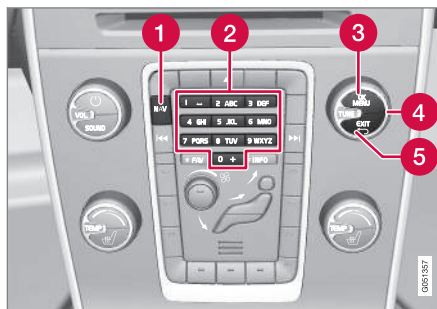
Voice commands can also be used, see (p. 22).

Related information

- Sensus Navigation system overview (p. 16)
- Center console controls (p. 19)
- Controls on the steering wheel keypad (p. 20)
- Remote control (p. 20)
- Voice control introduction (p. 22)

Center console controls

The navigation system can be operated using controls on the center console.



The illustration is generic and may vary from model to model

- 1 **NAV** activates the Sensus Navigation system on the screen. If the system is already on screen, pressing this button opens a shortcut menu, see (p. 36).
- 2 The **Keypad** is used to enter characters to set an address, etc., see also (p. 28) and (p. 38).
- 3 Press **OK/MENU** briefly to confirm or activate a selection. This is described in this manual as "+ **OK**".

- 4 Turn **TUNE** to scroll in a menu, or when a map is displayed to change its scale.
- 5 Press **EXIT** to go back in a menu or cancel a selection/function.

Related information

- Controls – introduction (p. 19)

¹ Not available in all markets.



Controls on the steering wheel keypad

The navigation system can be operated using controls on the right-side steering wheel keypad.



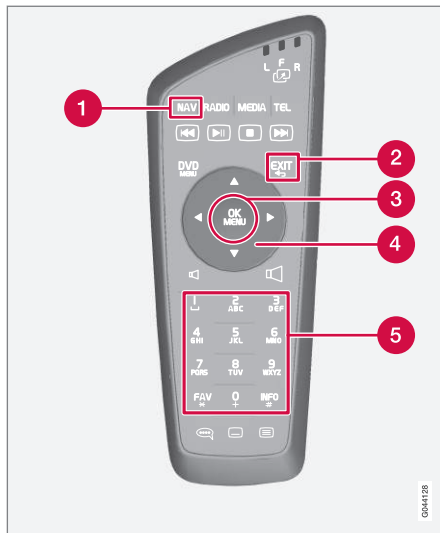
The illustration is generic and may vary from model to model

- 1 Turn the thumb wheel to scroll in a menu, or when a map is displayed to change its scale.
- 1 Press the thumb wheel to confirm or activate a selection.
- 2 EXIT to go back in a menu or cancel a selection/function.

Remote control³

The remote control can be used to control various navigation system functions.

- To use the remote control, point it toward the center console.



Button on the remote control

- 1 NAV: activates the navigation system on the screen. If the navigation system is already activated, pressing this button

opens a shortcut menu. For additional information, see (p. 36).

- 2 EXIT: go back in a menu or cancel a function.
- 3 OK/MENU: confirm a selection. This button is described in the manual as "+ OK".
- 4 Arrow keys: use to move the cursor among menu selections.
- 5 Keypad: use to e.g., enter a name/address or to scroll on a map.

NOTE

If the remote is not working properly, try replacing the AA/LR6 batteries.

WARNING

To help avoid the risk of injuries in the event of sudden braking or a collision, always stow loose objects such as the remote control, cell phones, cameras, etc. in the glove compartment or other storage compartments when not in use.

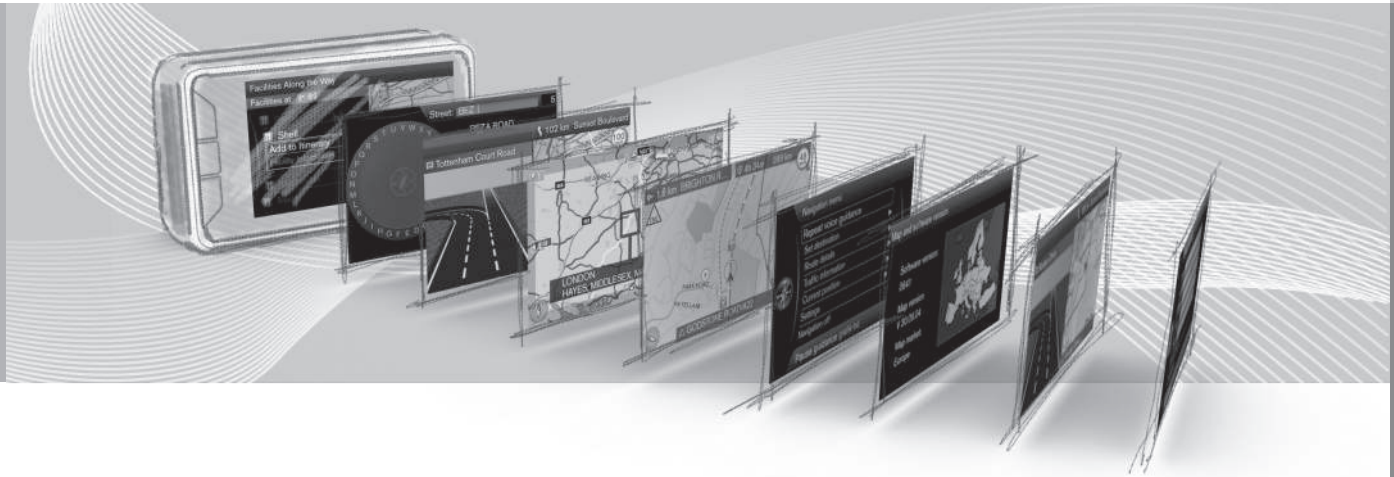
Related information

- Controls – introduction (p. 19)

³ Not available in all markets.

04

VOICE CONTROL





04 Voice control

Voice control introduction

The navigation system's voice control feature enables you to voice-activate certain system functions.

Voice commands (p. 23) offer convenience and help avoid distractions so that you can concentrate on driving and focus your attention on road and traffic conditions.

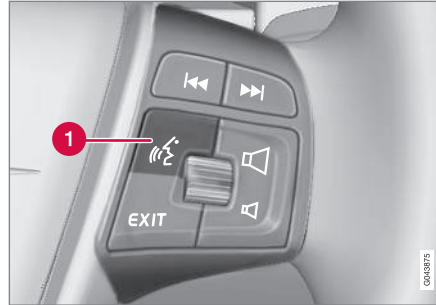
WARNING

As the driver, you have full responsibility for operating the vehicle safely and adhering to all applicable traffic regulations.

The voice control feature uses the same microphone as the hands-free system and prompts are provided through the infotainment system's front speakers.

The microphone is positioned in the ceiling liner in front of the driver. Voice commands given by other occupants of the vehicle may not be understood.

Getting started



Steering wheel keypad

-  Voice control button

Activating the system

- Press the voice control button (1) briefly to activate the system and after the tone, initiate a command dialogue.

Keep the following points in mind when using the voice control system:

- When giving commands, after the tone, speak at your usual speed and in a normal tone of voice
- The vehicle's doors, windows and moon-roof should be closed when using the voice control system
- Avoid background noises in the cabin when using the system

NOTE

If you are uncertain of the commands that you can use, saying "Help" after the tone will prompt the system to provide a number of commands that can be used in a specific situation.

Voice control commands can be **cancelled** by:

- Pressing **EXIT**
- Pressing and holding the voice control button for several seconds

Related information

- Using voice commands (p. 23)
- Voice control help functions and settings (p. 23)
- Selecting a voice control language (p. 25)



Using voice commands

Using voice commands is an easy way to operate the system and commands that can be used in a specific situation will be shown on the screen.

Command dialogs

To start a command dialog:

1. Press the voice control button briefly. A list of commands will be displayed on the screen.

Commands can be given in several ways

For example, the command "**Navigation** > **Set address**" can be spoken as:

- Begin by saying "**Navigation**," wait for a system response in the form of on-screen alternatives and continue by saying "**Set address**."

or

- Give the entire command at one time, i.e., "**Navigation Set address**."

Useful tips

- Initiate a voice command by pressing the voice control button and speaking at your usual speed and in a normal tone of voice.
- To respond to the system, speak **after the tone**.

- The system will give a prompt several times. If the driver does not respond, the command dialogue will be cancelled.
- A command dialogue can be speeded up by interrupting a system prompt by pressing the voice control button briefly. Wait for the tone and begin to speak.
- Saying "**Help**" after the tone will prompt the system to provide a number of commands that can be used in a specific situation.



NOTE

A complete list of shortcut commands can be found by pressing: **MY CAR** → **Settings** → **Voice control settings** → **Command list**.

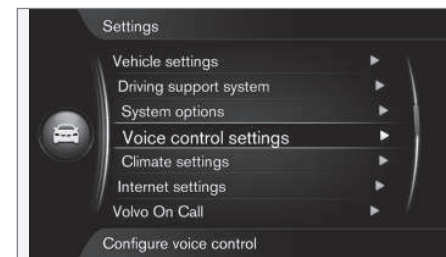
Volume

Voice command volume can be adjusted by turning the infotainment system's **VOL** control while the system is speaking.

Voice control help functions and settings

Voice tutorial gives the driver step-by-step instructions about using the system.

You can also set up a user profile for a specific driver.



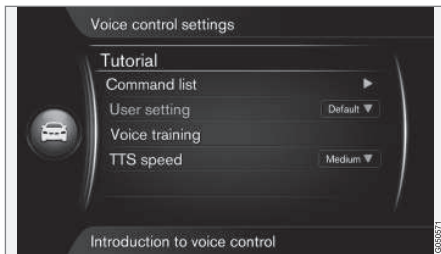
MY CAR → **Settings** → **Voice control settings**



04 Voice control



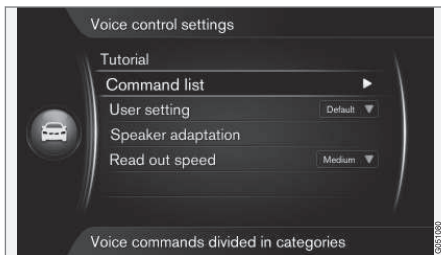
Voice control introduction



MY CAR → Settings → Voice control settings → Introduction to voice control

Scroll to **Introduction to voice control** + **OK** for information about how voice control functions and to become familiar with the system's features and the procedure for giving commands.

List of commands



MY CAR → Settings → Voice control settings → Command list

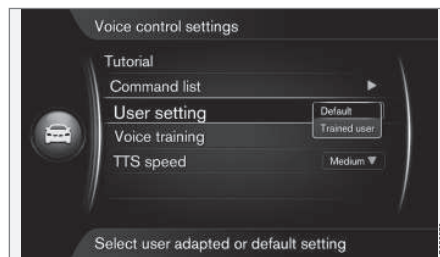
Scroll to **Command list** + **OK** to display a complete list of voice control commands.

User Setting (profile)

Using the voice tutorial will help the driver become proficient at using the system.

NOTE

The tutorial can only be started when the vehicle is parked and the parking brake is applied.



MY CAR → Settings → Voice control settings → User setting

Scroll to **User setting** + **OK** to start a training program to help the system "learn" your voice and pronunciation.

After the tone, repeat the words and phrases read aloud by the system. This takes approximately 5 minutes.

When the training has been completed, a setting can be made by marking your choice + **OK**:

- **Default:** the standard setting if no voice profile has been established.
- **Trained user:** Voice training has been completed. The system is adapted to the specific user.

NOTE

The menu alternative **Default** can be changed to **Trained user** after one **User setting** session has been completed.

See also the heading "Changing languages" in the Selecting a voice control language (p. 25) article.

Training

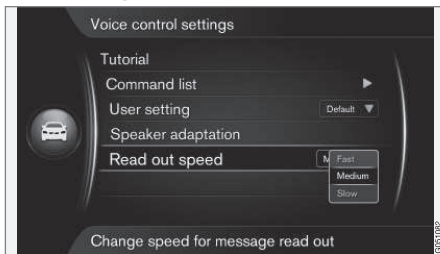




MY CAR → Settings → Voice control settings → Speaker adaptation

Scroll to **Speaker adaptation** + **OK** to start a program that helps the voice control system learn to understand your voice and pronunciation even better than when a user profile was set (see the previous section).

Read out speed



MY CAR → Settings → Voice control settings → Read out speed

Scroll to **Read out speed** + **OK** to change the speed at which voice prompts are read:

- **Fast**
- **Medium**
- **Slow**

Related information

- Voice control introduction (p. 22)
- Using voice commands (p. 23)
- Selecting a voice control language (p. 25)

Selecting a voice control language

The voice control system (p. 22) is constantly being developed and at the time this information was produced, the following languages were available:

- English (US)
- French (CDN)
- Spanish (Mexico)

NOTE

Navigation system voice commands can only be given in languages listed.

Changing languages

MY CAR → Settings → Language



This icon is displayed next to the languages that can be selected.

To change languages, go to **MY CAR** → **Settings** → **Language**, mark the language + **OK** + **NAV**.

Language-dependent user profile

The voice control feature will only understand the languages set in **MY CAR**.

For example, assume that a **Trained user** profile has been saved by a **French-speaking** driver with the system set to **French**. If the driver then changes languages (in **MY**



04 Voice control



CAR) to **English**, voice control will not function.

This is because this **Trained user** profile is set to only understand commands given in **French** and cannot be selected since the system will now only understand commands given in **English**. The system will activate **Default** instead.

For the system to understand **English** commands, a new user profile will have to be set¹, in which case the system language must be set to **English**.



NOTE

If a language is changed in **MY CAR**, please note that voice commands, voice guidance, menus and help texts will all use the selected language.

Related information

- Voice control introduction (p. 22)

¹ See (p. 23).

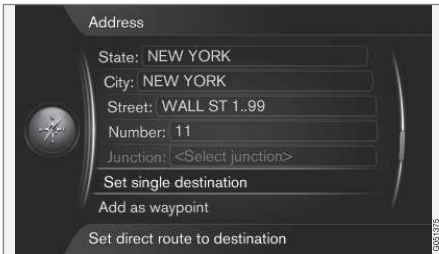
05

THE TEXT WHEEL



Entering text and making selections

Use the navigation system's text wheel or the center console keypad to enter characters, e.g., for an address, point of interest, etc.



Screen view for entering an address

The navigation system uses a text wheel for entering information.

Activating a selection

Scrolled to the desired function/field by turning the **thumb wheel** or **TUNE** and press the **thumb wheel/OK** to see the next screen for this selection.

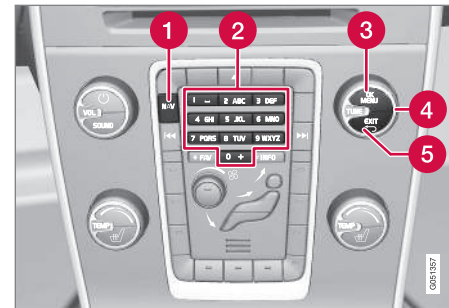
Entering characters with the text wheel



Text wheel

1. Press **OK** to display the text wheel.
2. Select a character by turning the **thumb wheel** or **TUNE** and enter it by pressing the **thumb wheel** or **OK**.

Entering characters with the center console keypad



[2] Keypad¹

Characters can also be entered using the center console keypad: **0-9**, ***** and **#**.

9 WXYZ For example, pressing key **9** will display all of the characters available on that key, e.g., **w**, **x**, **y**, **z** and **9**. Press repeatedly to select the letter/number of your choice.

Erase or cancel by pressing **EXIT**.

Special characters on the text wheel



NOTE

Grayed-out characters cannot be selected in a particular context.

¹ The illustration is generic and may vary from model to model.



The text wheel can also be used to enter numbers or special characters:

- Scroll to **123/ABC + OK**: the text wheel will change to numbers or uppercase letters.
- **MORE + OK**: makes it possible to select special characters.
- **=> + OK**: the cursor will move to the list that has been displayed on the right side of the screen (if any information has been found matching the characters that you have entered). Scroll to the selection of your choice and press **OK**.
- **Zip code + OK**: the cursor will move to the list that has been displayed on the right side of the screen. Scroll to the selection of your choice and press **OK**, see also (p. 49).

Lists of selections



A sample list matching the search criteria (characters) entered

As characters are entered, a list will be compiled on the right side of the screen showing names, etc., that match the characters that you have entered.

In this example, the number "3" in the upper right corner of the screen indicates that the list contains three possible selections that match the characters entered (e.g., **NEW YORK**).

No list

An empty list and the characters "****" in the upper right corner of the screen indicate there are more than 1,000 matches for the characters entered. Enter additional characters to limit the scope of the search. The actual number of selections will then be shown.

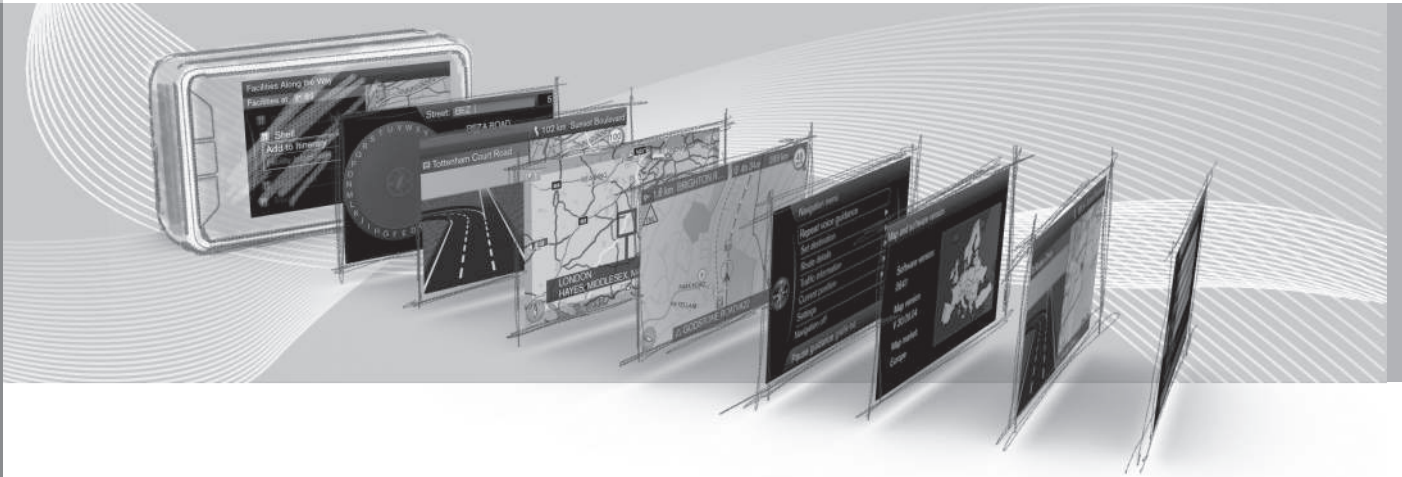
Related information

- Controls – introduction (p. 19)

06



MAPS, COMPASS AND VOICE GUIDANCE



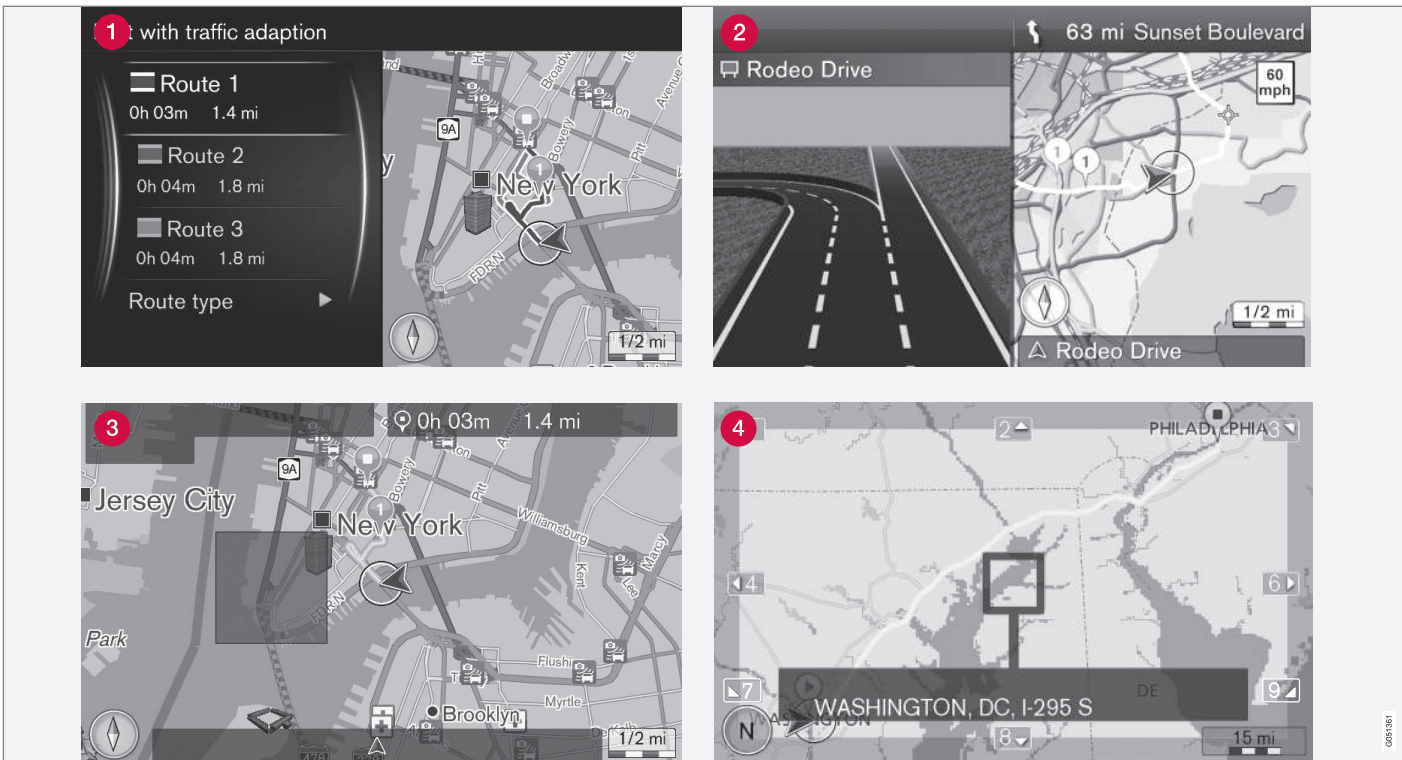


Map views – several examples

The following illustrations show examples of different ways of displaying the vehicle's current location.



06 Maps, compass and voice guidance



These illustrations are generic. Details may vary depending on software version, etc.

The map view is determined by your geographic location and the settings that have

been made, such as map scale, the POIs that have been selected for display, etc.

An overview of the text and symbols used can be found on the inside of the front cover.

0681181



- 1 Setting an itinerary: three alternative routes are calculated, see (p. 61).
- 2 Detailed view of intersections/turns: The left side of the screen shows a detailed view of the next intersection/turn in your route. Voice guidance is also provided, see (p. 34).
- 3 The box shows an area that will be avoided when a route is calculated, see (p. 63).
- 4 Scroll mode, see (p. 38).

Related information

- Compass (p. 34)
- Voice guidance (p. 34)



Compass

A compass is displayed on the map showing the direction in which the vehicle is moving.



The red point on the compass needle points north on the map and the white end of the needle points south.

A text-based compass can also be selected, see

(p. 65).

Related information

- Map views – several examples (p. 31)

Voice guidance

After a destination (p. 43) has been specified and the vehicle approaches an intersection or turn, voice guidance will be given with the distance to the turn and the action that the driver should take. A detailed map of the intersection (p. 31) will also be displayed. Voice guidance will be repeated as the vehicle gets closer to the intersection.

While voice guidance is in progress, its volume can be adjusted using the infotainment system's volume control.

To repeat voice guidance:

- Press **OK twice**.

For additional information, see the heading "Voice guidance" (p. 67).

NOTE

Voice guidance will not be provided during a call using a Bluetooth-connected cell phone.

For voice guidance in another language, see **Voice control** (p. 25).

Related information

- Guidance options (p. 67)

07

MENUS





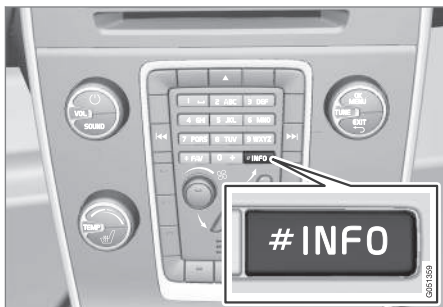
Menu system

The navigation system's menus consist of shortcuts, main menus and scroll menus.

i NOTE

Grayed-out menu alternatives on the screen can currently not be selected.

Additional information



The illustration is generic and may vary from model to model

If there is more information available than can currently be displayed on the screen, the line of text will end with the "#" character.

To display the remaining information:

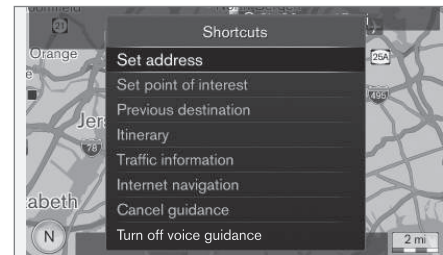
- Press the **INFO** button on the center console.

Related information

- Shortcuts (p. 36)
- Main menu (p. 37)
- Scroll mode (menu) (p. 38)
- The menu structure (tree) (p. 39)

Shortcuts

The navigation system has a shortcut menu providing easy access to the most commonly used features.



Displaying the shortcut menu from the map view

- Press the **NAV** button.

Displaying the shortcut menu from another menu

- Press the **NAV** button **twice**.

The shortcuts include:

- **Set address:** see (p. 44).
- **Set point of interest:** see (p. 46).
- **Previous destinations:** see (p. 48).
- **Itinerary:** see (p. 53).
- **Traffic information:** see (p. 74).
- **Internet search:** see (p. 48).



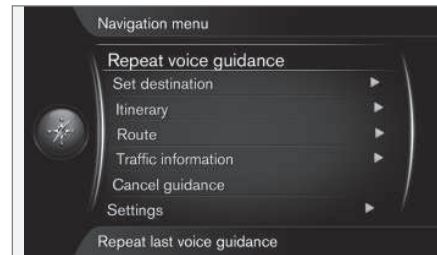
- **Cancel guidance:** cancels/pauses the current itinerary. The menu text will change to **Resume guidance**.
- **Turn off voice guidance/Turn on voice guidance:** deactivates/reactivates voice guidance. If it is deactivated, voice guidance will be given each time the main menu's top line is selected: **Repeat voice guidance**, see (p. 37).

Related information

- Main menu (p. 37)
- Scroll mode (menu) (p. 38)
- The menu structure (tree) (p. 39)

Main menu

The main menu is at the top of the navigation system's menu structure (tree).



Accessing the main menu from the map view

- Press the **OK** button.

Accessing the main menu from another menu

- Press **NAV** followed by **OK**.

Repeating voice guidance

- With **Repeat voice guidance** highlighted (selected), press the **OK** button to repeat the most recent guidance instructions. The instructions will be repeated each time **OK** is pressed, see (p. 34).

Or if the map is displayed on the screen:

- Press the **OK** button **twice**.

Voice guidance can also be deactivated, see (p. 36).

Returning to the map

You can easily return to the map view regardless of where you are in menu structure (tree) (p. 36):

- Press the **NAV** button.

Related information

- Shortcuts (p. 36)



Scroll mode (menu)

In scroll mode, the cursor is moved across the map using number keys on the center console (p. 19).

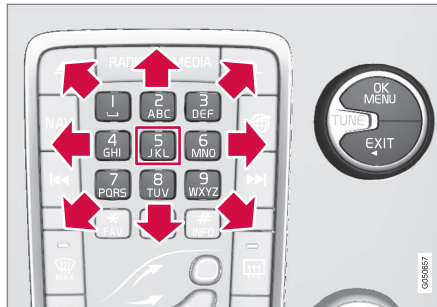


Scroll mode and cursor¹

Activating scroll mode from the map view

- Press one of the number keys **0-9** on the center console.

Scrolling



- Press one of the following number keys **1-2-3-4-6-7-8-9**: an arrow showing the direction will appear in the margin combined with the number to be used to scroll in the desired direction (see the illustration).

Zooming

- Turn **TUNE** on the center console.

Number key "5"

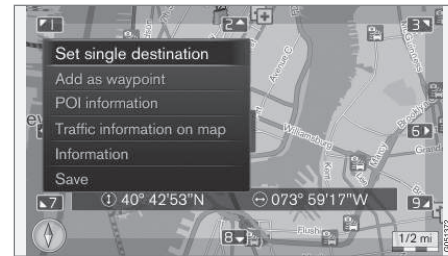
5 JKL Pressing key **5** in scroll mode will center the map around the vehicle's location.

If an itinerary with intermediate destinations is activated, the map will be centered on one of the intermediate destinations each time the key is pressed.

Exiting scroll mode

- Press **EXIT** or **NAV**.

Cursor



Press **OK** to display a menu for the point on the map that the cursor is pointing to:

- **Set single destination:** Any previous destinations in the itinerary will be erased and guidance will start on the map.
- **Add as waypoint:** the marked location will be added to the itinerary.
- **POI information:** the name and address of a point of interest closest to the cursor will be displayed. For additional information about POIs, see (p. 46).
- **Traffic information on map:** makes it possible to see any available traffic information for the marked location².

¹ You can set the cursor to show a name or GPS coordinates, (p. 65).

² Not available in all areas.



- **Information:** displays any available information about the marked location.
- **Save:** stores the marked location in the system's memory.

Related information

- Menu system (p. 36)

The menu structure (tree)

The following table provides an overview of the navigation system menu structure:

Menu level 1	
Menu level 2	—
Menu level 3	

Menus/functions

Three of the menu structure's levels are shown. Menu level 3 may in certain cases also have submenus, which will be explained in the respective articles.

Repeat voice guidance	(p. 34)
Set destination	(p. 43)
Home	(p. 43)

Address	(p. 44)
State:	
City:	
Street:	
Number:	
Junction:	
Set single destination	
Add as waypoint	
Information	
Save	
Point of interest (POI)	(p. 46)
By name	
By category	
Near the car	
Along the route	
Near the destination	
Around point on map	
Stored location	(p. 47)
Set single destination	
Edit	
Delete	
Delete all	



Previous destination	(p. 48)
Set single destination	
Add as waypoint	
Information	
Save	
Delete	
Delete all	
Internet search	(p. 48)
Zip code	(p. 49)
State:	
Zip code	
Street:	
Number:	
Junction:	
Set single destination	
Add as waypoint	
Information	
Save	

Latitude and longitude	(p. 49)
Format:	
Set single destination	
Add as waypoint	
Information	
Save	
Select point on map	(p. 50)
Set single destination	
Add as waypoint	
Save	
Travel guide	(p. 51)
Start guidance	
Details	
Photos	
Play audio	
Pause audio	
Itinerary	
Itinerary	(p. 53)
Start guidance	
Add another waypoint	
Clear itinerary	

Route	
Avoid	(p. 56)
Reroute	
Longer	
Shorter	
Delete	
Alternative routes to destination	(p. 56)
Route overview	(p. 56)
Detailed route information	(p. 57)
Next	
Previous	
Zoom in	
Zoom out	
Map of remaining route	(p. 58)
Record route	(p. 59)
or	
Stop recording	
Traffic information	(p. 74)



Cancel guidance or Resume guidance	(p. 37)
Settings	
Route options	(p. 61)
Route type	(p. 63)
Reroute on request	(p. 64)
Route proposals	(p. 64)
Use carpool lane	
Use express lane	
Avoid area	
Avoid highways	
Avoid toll roads	
Avoid tunnels	
Avoid ferries	

Map options	(p. 65)
Show full-screen map	
Map type	
Highway information	
Position information	
Compass	
POI symbols	
Map colors	
Stored location on map	
Guidance options	(p. 67)
Time of arrival format	
Street names in voice guidance	
Turn-by-turn navigation	
Automatic read out of traffic	
Voice guidance	
Use simple voice guidance	
Speed camera warning	
Stored location notification	
Travel POI notification	
Guided tour notification	

System information	(p. 71)
FAV key options	(p. 71)
Import/export stored locations	(p. 71)

Related information

- Menu system (p. 36)

08



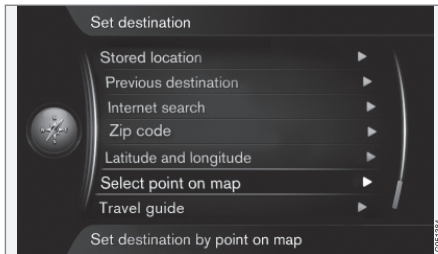
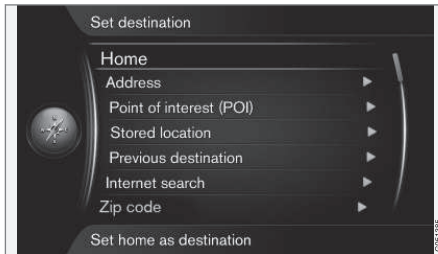
SETTING A DESTINATION





Setting a destination

There are several ways of setting a destination.



A destination can be set using the following criteria:

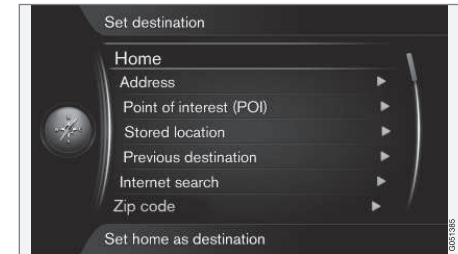
- **Home**, (p. 43).
- **Address**, (p. 44).
- **Point of interest (POI)**, (p. 46).
- **Stored location**, (p. 47).
- **Previous destination**, (p. 48).

- **Internet search**, (p. 48).
- **Zip code**, (p. 49).
- **Latitude and longitude**, (p. 49).
- **Select point on map**, (p. 50).
- **Travel guide**, (p. 51).

See also the text wheel (p. 28) for information about entering text.

Search using Home

You can set a destination by specifying "Home" to set a return route to your home, office, etc.



Set destination → Home

The navigation system can store (p. 47) a location of your choice under the heading "Home," which simplifies a return trip to your home, office, etc.





08 Setting a destination



You can store a location as "Home" each time a location is stored. To do so:

- Select **Save location as home** + **OK**.

To activate an itinerary using "Home" as a destination:

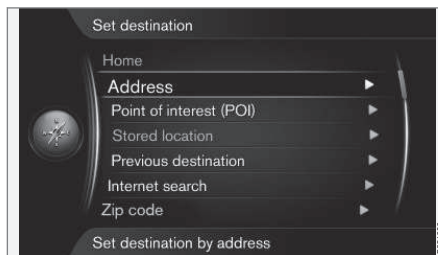
- Select **Set destination** → **Home** + **OK** to start guidance.

Related information

- Setting a destination (p. 43)

Search using an address

You can set a destination by specifying an address.



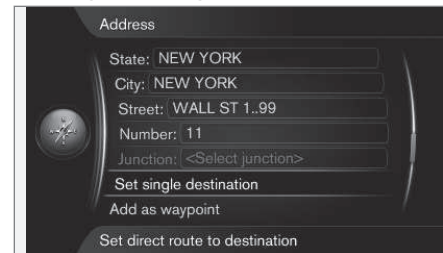
Set destination → **Address**

It is enough to enter the name of a city, area, town, etc. to be guided to its center.

NOTE

The definition of a city or area may vary from state to state, and also within the same state. It will sometimes be an entire city, or a particular section of a city.

Country, area/city and street



The following is the procedure for setting an address as a destination¹:

1. With the previous illustration's view on the screen, press **OK** to activate the pre-selected text field. The text wheel (p. 28) will be displayed.
2. Enter name of the area/city in the **City**: field using the text wheel or the center console keypad, see (p. 19).
3. Scroll to **Street**: with **TUNE** + **OK** and repeat the procedure.

The following search criteria can be used:

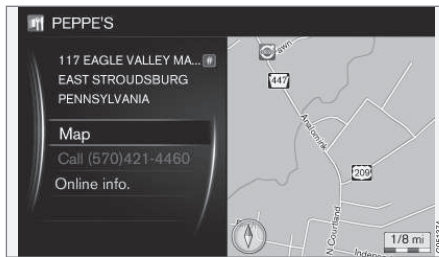
- **State**:
- **City**:
- **Street**:
- **Number**:
- **Junction**: (intersection)

¹ For information on entering text, see Entering text and making selections (p. 28).



- **Set single destination** – deletes any destinations in the itinerary and starts guidance to the selected destination.
- **Add as waypoint** – mark the selection + **OK** to add the address as an intermediate destination in the itinerary.
- **Information** – mark the information + **OK** to display information about the selected destination.
- **Save** – Store the address (p. 47) in the system's memory as a **Stored location** or as **Home**.

More about Information



Select an address/street + **OK** to select the following:

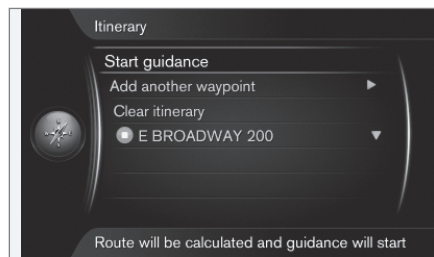
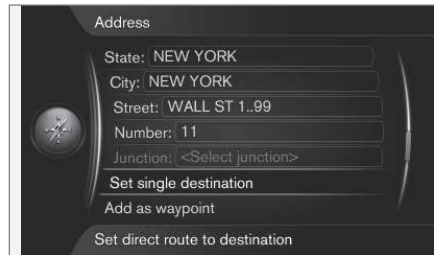
- **Map**: displays a map of the location with additional information when available.
- **Call number**²: A call will be initiated if a phone number has been provided.

² Requires a paired and connected cell phone, see the Sensus Infotainment supplement.

³ Requires an Internet connection, see the Sensus Infotainment supplement.

- **Online info**³: Additional information can be downloaded from the Internet.

Set single destination



A single destination and possible intermediate destinations can be added to an itinerary.

- **Set single destination**: an itinerary is created. Any previous itineraries will be deleted.
- **Add as waypoint**: an intermediate destination will be added to the itinerary.
- **Start guidance**: Guidance for the current itinerary will begin.

For more information about **Start guidance** (p. 43).

Related information

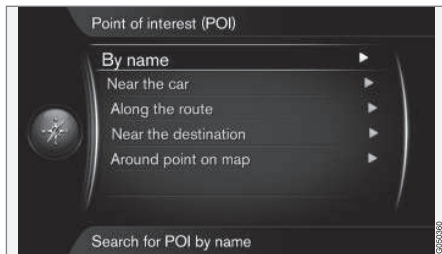
- Setting a destination (p. 43)



08 Setting a destination

Search using a Point of Interest (POI)

You can set a destination by specifying a POI.



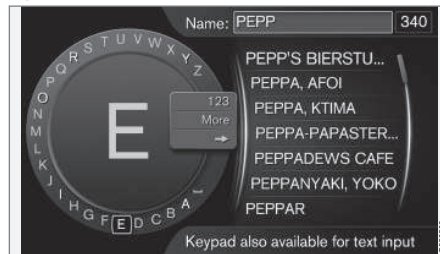
The map database contains a large number of searchable POIs⁴ that can be selected as destinations.

All POI searches are done using the text wheel (p. 28) and selecting from the resulting list. Mark your selections + **OK** and finish with one of the following:

- **Set single destination:** adds the POI as a destination.
- **Add as waypoint:** adds the POI as an intermediate destination.
- **Information:** Provides information about the POI.
- **Save:** Stores the POI in the system's memory as a **Stored location** or as **Home**.

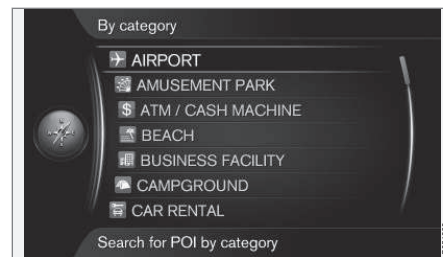
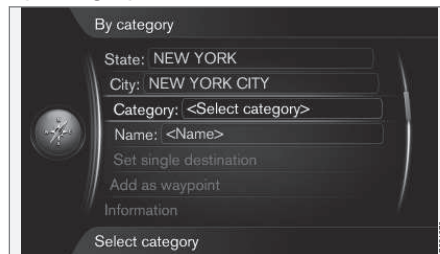
The procedure is the same as the one described under the heading "Country, area/city and street" in Search using an address (p. 44).

By name



By name + **OK** displays the text wheel to search for the name of a POI, e.g., "Peppe's". The entire map area will be included in the search, see (p. 44).

By category



By category limits the POI search to specific categories (e.g., bank/hotel/museum).

Near the car

Near the car searches for POIs near the vehicle's current location.

Along the route

Along the route searches for POIs along the current itinerary.

Near the destination

Near the destination searches for POIs near the destination.

Around point on map

Around point on map searches for POIs by scrolling with the cursor, see (p. 38).

- The scroll map will be displayed. Move the cursor to the desired position + **OK** and search for the desired POI.

⁴ See the heading "Point of interest (POI) on the map" POI (p. 65).

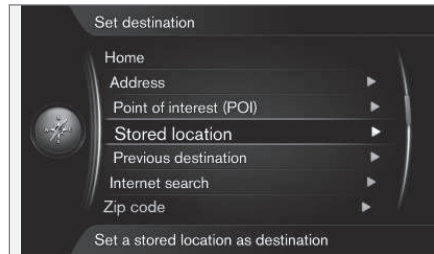


Related information

- Setting a destination (p. 43)
- Points of Interest (POI) (p. 80)

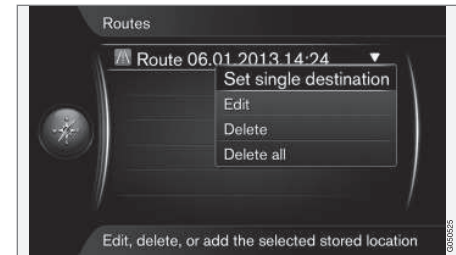
Search using a stored location

You can set a destination by specifying a stored location.



Set destination → Stored location

This function is a collection of destinations and locations stored under the menu alternative "Save". They can be used to quickly set or change an itinerary (p. 53).



Recorded routes⁵.



Stored locations can be found under "Other"

The respective routes, destinations, and locations found under **Routes** and **Other** can be changed as follows:

- **Set single destination**
- **Add as waypoint**
- **Information**
- **Edit**

⁵ See (p. 59).



08 Setting a destination



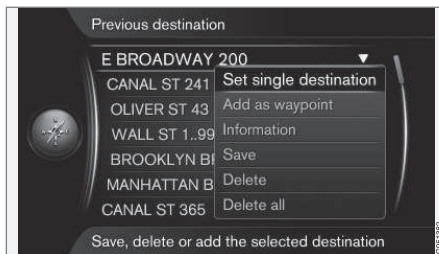
- Delete
- Delete all

Related information

- Setting a destination (p. 43)

Search using a previous destination

Select among previously stored destinations.



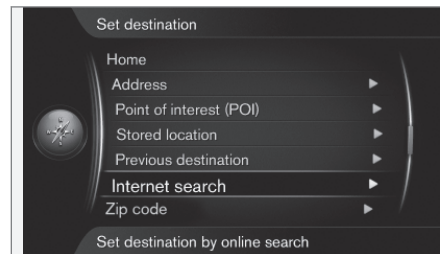
Set destination → Previous destination

This is a list of previously stored destinations. Scroll to one of them, press **OK** and choose among:

- Set single destination
- Add as waypoint
- Information
- Save
- Delete
- Delete all .

Search using the Internet

You can search for a destination using the Internet.



Set destination → Internet search

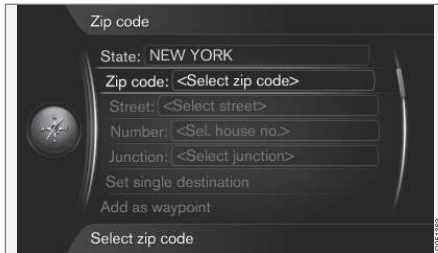
This alternative makes it possible to search for a destination using the Internet ⁶. Follow the instructions on the center console screen.

⁶ An Internet connection is required, see the Sensus Infotainment supplement.



Search using a zip code

Select a destination by specifying its zip code.



Set destination → Zip code

To search for a zip code:

1. Mark **Zip code** + **OK** to display the text wheel.



2. Select numbers by turning **TUNE** + **OK** or enter numbers using the center console keypad (p. 28).

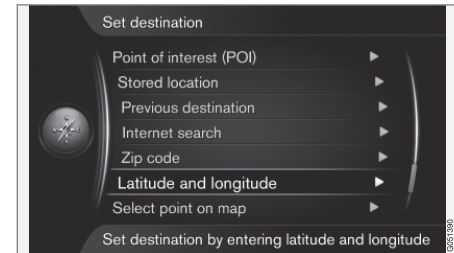
- **ABC/123** + **OK**: the text wheel shifts between letters and numbers.
- **MORE** + **OK**: special characters are displayed.
- **=>** + **OK**: the cursor moves to the list at the right of the screen. Scroll to your selection and confirm by pressing **OK**.
- **City** + **OK**: the cursor will change menus to allow you to change zip code areas.

Related information

- Setting a destination (p. 43)

Search using latitude/longitude

You can specify a destination using Global Positioning System (GPS) coordinates.



Set destination → Latitude and longitude

Begin by deciding which type of GPS coordinates are to be used by marking **Format**: + **OK**. Continue by selecting one of the following + **OK**:



08 Setting a destination

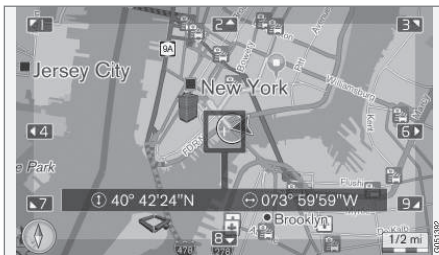
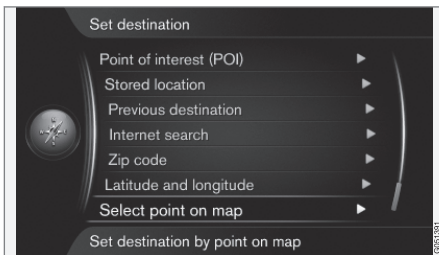
- **DD°MM'SS"**: location is degrees, minutes and seconds
- **Decimal**: location expressed in decimals

Enter the GPS coordinates as follows:

1. Place the cursor on the number/character field to be changed by turning **TUNE** and pressing **OK**: the window's contrast will change to show that it is "active."
2. Turn **TUNE** to enter the number/character and finish by pressing **OK**: the window is "deactivated."
3. Move the cursor to the next position to be changed and repeat steps 1 + 2.
4. When both of the new coordinates have been entered, turn **TUNE** and mark one of the following alternatives + **OK** to store the new position or to add it to an itinerary:
 - **Set single destination**: adds the coordinates' location as a destination.
 - **Add as waypoint**: adds the coordinates' location as an intermediate destination.
 - **Information**: Provides information about the location.
 - **Save**: Stores the location in the system's memory as a **Stored location** or as **Home**.

Search using a position on the map

You can set a destination by specifying a position on the map.



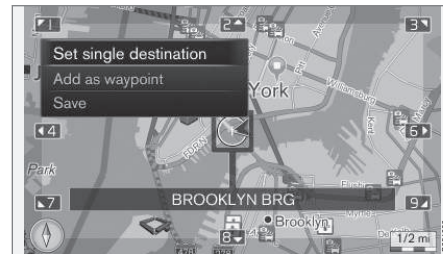
The cursor's position given in GPS coordinates⁷.

Set destination → Select point on map

Display a map where the cursor indicates the desired location.

- Turn **TUNE** to change the map scale.

1. Move the cursor using the center console number keys: [**6 MNO**] to move to the right, [**8 TUV**] to move down, etc., see (p. 38).
2. When you have found the desired location, press **OK**.



The cursor's position shown by name⁷.

Choose one of the following and confirm by pressing **OK**:

- **Set single destination**
- **Add as waypoint**
- **Save**

If **Save** is chosen, the destination will be stored as a symbol/icon on the map if the function **Stored location on map** has been selected. See the information under this heading in the article "**Map options**" (p. 65).

Related information

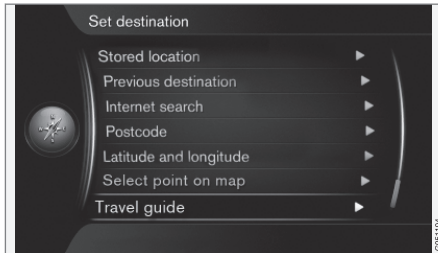
- Setting a destination (p. 43)

⁷ You can opt to show the cursor's position by name or GPS coordinates, see "Information about the desired location" in the article Map options (p. 65).



Search using Travel guide

Searching using "Travel guide"⁸ offers suggested destinations/routes according to various themes such as restaurants, scenic drives, sight-seeing, etc.



Set destination → Travel guide

A Travel guide is stored on a USB flash drive that has to be plugged into the vehicle's USB socket⁹.

If this menu alternative is not displayed, this is because there are no suggestions for your current location or no USB flash drive is connected.

- **Start guidance**
- **Details**
- **Photos**
- **Play audio**

⁸ Not available in all areas.

⁹ For additional information, see your owner's information or the Sensus Infotainment supplement.

09



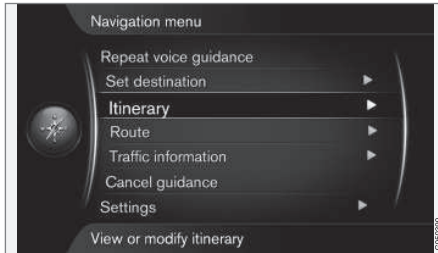
SETTING AN ITINERARY





Creating an itinerary

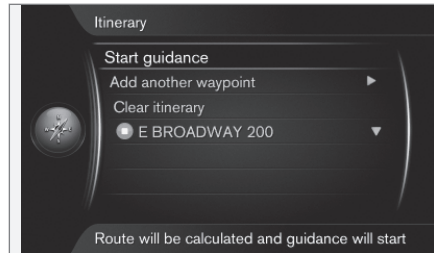
This article shows how you can create an itinerary and start guidance to the desired destination.



Itinerary

An itinerary is created when a destination has been saved. The system handles one itinerary at a time, with a maximum of 4 intermediate destinations (waypoints).

Starting guidance



Itinerary → Start guidance

If necessary, scroll to **Start guidance** + **OK** to activate the current itinerary. Guidance will begin.

Route proposals



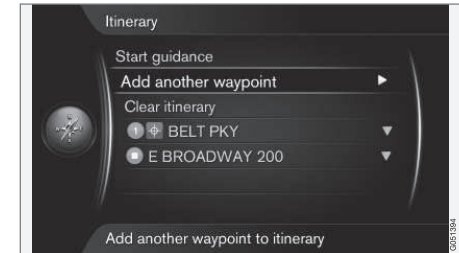
3 alternative routes

If **Route proposals**¹ has been selected, ("3" must be selected), the driver has to select

one of the proposed routes before guidance can begin, see (p. 56).

Adding an intermediate destination (waypoint)

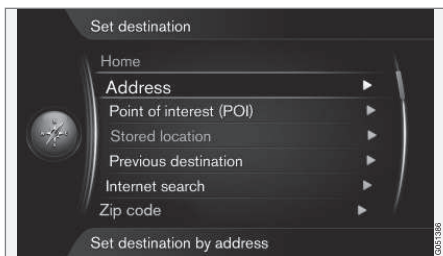
If you would like your route to be set up in stages, up to 4 intermediate destinations (waypoints) can be added to your itinerary.



Itinerary → Add another waypoint

Scroll to **Add another waypoint** + **OK** to display the menu for selecting a destination (p. 43).

¹ See (p. 61).



Select one of the methods for selecting a destination from the **Set destination** menu and add up to 4 intermediate destinations.

The first destination selected will be set as your final destination; any others will be set as intermediate destinations (waypoints).

NOTE

The most recently added destination always becomes intermediate destination 1. The existing number 1 will become number 2, etc.

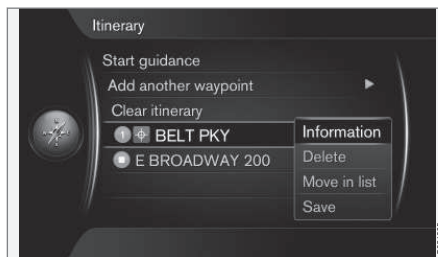
The order of the intermediate destinations can be rearranged, see the heading **Move in list** (p. 54).

Related information

- Intermediate destinations (waypoints) in an itinerary (p. 54)
- Setting a destination (p. 43)

Intermediate destinations (waypoints) in an itinerary

The order of your intermediate destinations in an itinerary can be changed or they can be replaced.



By marking an intermediate destination and pressing **OK**, the following can be done for each one:

- **Information:** e.g., name and address
- **Delete**
- **Move in list:** change the order of the intermediate destinations in the list
- **Save:** store the intermediate destinations

Reorder in the list

To change the order of the intermediate destinations in the list:

1. Scroll to the intermediate destinations to be moved + **OK**: a pop-up menu will be displayed
2. Select **Move in list** + **OK**

3. Turn **TUNE**: the destination will be moved up or down in the list
4. Finish by pressing **OK** to confirm.

Deleting an itinerary

Scroll to **Clear itinerary** + **OK** to delete the current itinerary, including all intermediate destinations.

Related information

- Creating an itinerary (p. 53)
- Map of the remaining part of the route (p. 58)

10

PLANNING A ROUTE

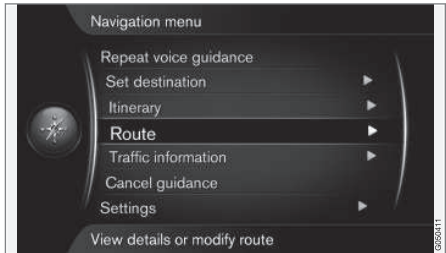




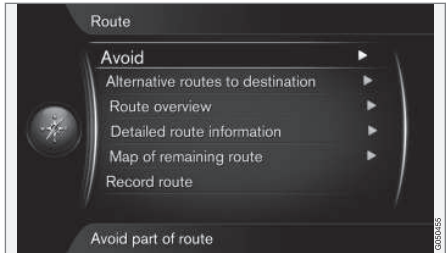
10 Planning a route

Avoiding sections of a route

This function enables the driver to avoid the next section of a route.



The **Avoid** feature will only function if there are alternative streets/roads available.



Route → Avoid

Scroll to **Avoid** if necessary + **OK** to open the following map view, with the next section of your route highlighted.



Highlighted section of a route

Select one of the following actions + **OK**:

- **Reroute**: the system will calculate a new route that avoids the highlighted section.
- **Longer**: the section of the route to be avoided will be extended.
- **Shorter**: the section of the route to be avoided will be shortened.
- **Delete**: the highlighted section of the route will be deleted and the route will be restored to its original version.

The **Avoid area** feature functions in a similar way but allows you to avoid an area on the map, see (p. 63).

Related information

- Alternative routes and route overview (p. 56)
- Detailed route information (p. 57)
- Map of the remaining part of the route (p. 58)
- Recording a route (p. 59)

Alternative routes and route overview

This article describes how an alternative route can be selected from a list of pre-calculated ones.

The "Route overview" function shows a selected intermediate destination's name and the distance to it.

Alternative routes



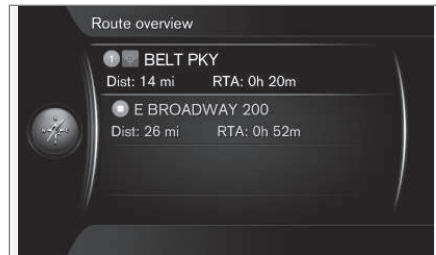
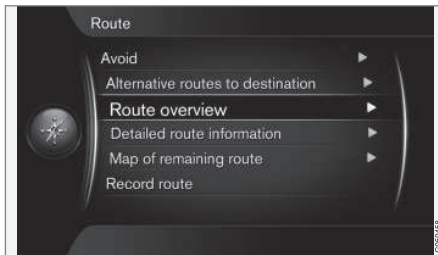
Route → Alternative routes to destination

Scroll to **Alternative routes to destination** + **OK** to select a different, pre-calculated route to your destination. See also **Route proposals** (p. 61).



Use **Route type** to select the type of route desired, see (p. 61).

Overview



Route → Route overview

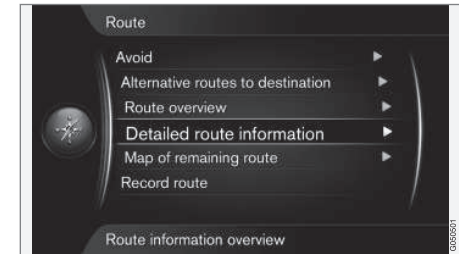
Scroll to **Route overview** + **OK** to show a list of information about the route's intermediate destinations and the final destination.

Related information

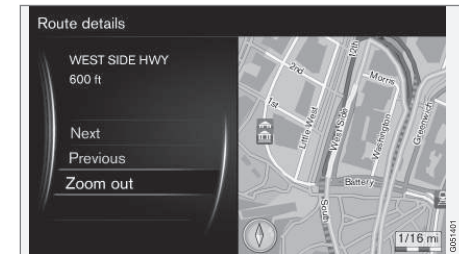
- Avoiding sections of a route (p. 56)

Detailed route information

The following describes the procedure for displaying a section of a route between two intermediate destinations.



Route → Detailed route information



Detailed section of a route

Scroll to **Next** or **Previous** + **OK** to display the location of each section of a route on the map, its name and distance.



10 Planning a route



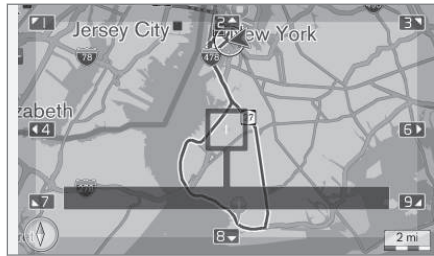
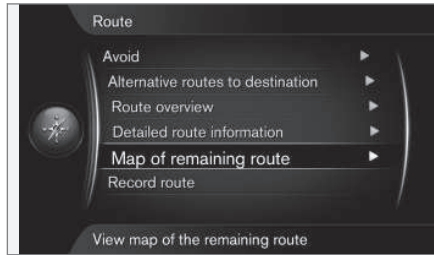
- **Next:** go to the next section of the route.
- **Previous:** go to the previous section of the route.
- **Zoom in/Zoom out:** change the map scale for the current section of the route.

Related information

- Avoiding sections of a route (p. 56)

Map of the remaining part of the route

This function shows the remaining section of your route.



Route → Map of remaining route

Scroll to **Map of remaining route** + **OK** to display a map view showing the remaining part of your route from the vehicle's current destination.

This view functions in the same way as Scroll mode (p. 38).

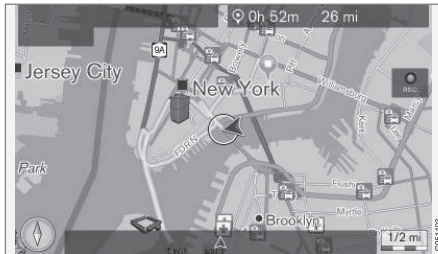
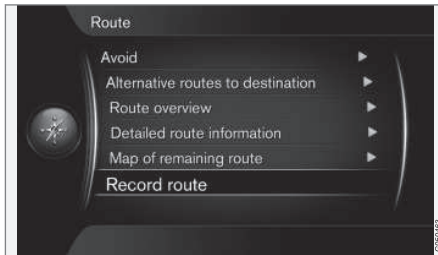
Related information

- Avoiding sections of a route (p. 56)



Recording a route

You can record and store a route in the navigation system's memory.

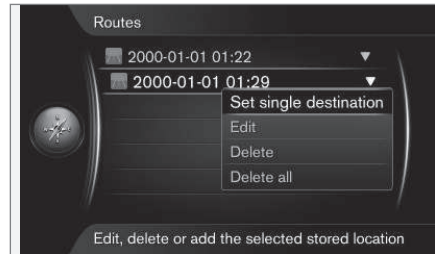


The "REC" symbol indicates that a route is being recorded

Route → Record route

The "REC" symbol is displayed while recording is underway. Use the menu alternative

Start/Stop route recording to stop recording.



Recorded routes are stored and can be opened under **Set destination** → **Stored location** → **Routes** (p. 47).

Recorded routes can be exported/copied to a USB flash drive¹ to e.g., copy the route to another vehicle's navigation system. For additional information, see (p. 71).

¹ Refer to your owner's information or the Sensus Infotainment supplement for information about using USB flash drives.

11

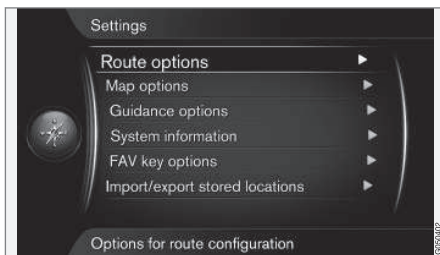
SETTINGS





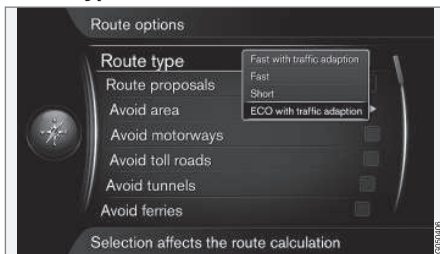
Route options

Route option settings include e.g., type of route and the number of alternative routes.



Settings → Route options

Route type

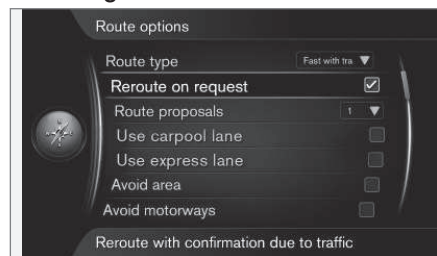


Settings → Route options → Route type

Different types of routes can be selected here. Scroll to your choice and press **OK**.

- **Fast with traffic adaption:** the quickest route to your destination with the fewest number of traffic problems¹.
- **Fast:** The quickest route is prioritized.
- **Short:** the shortest route is prioritized and may also include secondary roads.
- **ECO with traffic adaption:** routes enabling low fuel consumption are prioritized.

Rerouting

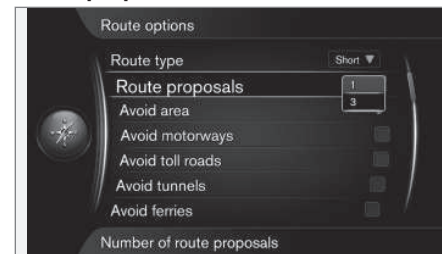


Settings → Route options → Reroute on request

This function reroutes your trip due to traffic information received and must be accepted (press **OK**) or rejected (press **EXIT**).

- **Reroute on request:** the driver has to accept a proposed new route.
- **Empty box:** The route will be recalculated automatically.

Route proposals



Settings → Route options → Route proposals

The **Start guidance** command initiates guidance differently depending on whether the driver has selected alternative "1" or "3"².

- Activate with **OK** and exit the menu by pressing **EXIT** or **NAV**.

Alternative "1"

The route will be based on the **Route type** selected in the previous section and guidance will begin.

¹ Coordinated with information from traffic radio (p. 74).

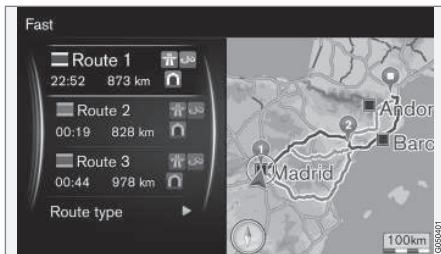
² See (p. 53).



11 Settings



Alternative "3"

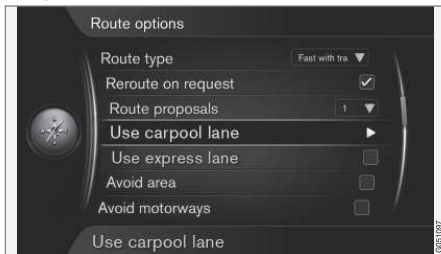


The driver has to choose one of the alternative routes before guidance will begin.

NOTE

If you have selected alternative "3" it will take slightly longer before guidance begins because the system has to first calculate 3 suitable alternatives.

Carpool lanes³

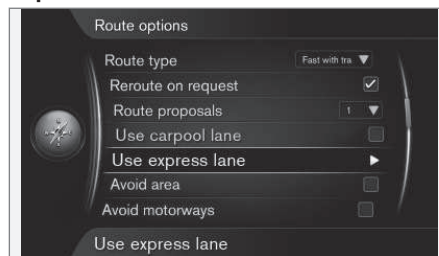


Settings → Route options → Use carpool lane

Private vehicles are sometimes allowed to use lanes reserved for buses, etc., assuming the vehicle has at least one passenger. If this alternative is activated, lanes of this type will be included when a route is calculated.

- Press **OK** to activate **Use carpool lane**. Exit the menu by pressing **EXIT** or **NAV**.

Express lanes³



Settings → Route options → Use express lane

Private vehicles are sometimes allowed to use lanes reserved for buses, etc., assuming the vehicle is classed as an eco-vehicle. If this alternative is activated, lanes of this type will be included when a route is calculated.

- Press **OK** to activate **Use express lane**. Exit the menu by pressing **EXIT** or **NAV**.

Related information

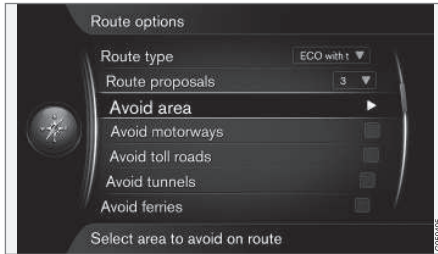
- Map options (p. 65)
- Guidance options (p. 67)
- System information (p. 71)
- The FAV button (p. 71)
- Import/export stored destinations (p. 71)

³ Only available if this information is included in the map database.



Route options – avoiding areas

You can create and store areas to be avoided when a route is calculated, e.g., through certain cities, neighborhoods, sections road, etc.



Settings → Route options → Avoid area

This feature allows you to avoid an entire area on the map when a route is calculated. It can be used to avoid being guided through a particular area, with the exception of highways, which are used when a route is calculated even through "avoided" areas.



Settings → Route options → Avoid area
→ Avoid new area → Select area on map

Create an area to be avoided

An area to be avoided is selected by marking it directly on the map using a "box" (see the following illustration). Several such areas can be created and stored.



To create and store a restricted area:

1. Scroll on the map to move the cursor to the desired area.
2. Press **OK** to display a red box.
3. Turn **TUNE** to adjust the size of the box.
4. Press **OK** when the box covers the desired area. This area will be stored and displayed in the list of such areas.

Activate an area to be avoided

To avoid being guided through an area on the list, it must first be activated. To do so:





11 Settings



1. Scroll to the area to be avoided + **OK**.
2. Select **Activate** + **OK**: the area to be avoided is now activated and the system will not guide you through it.

Deactivate an area to be avoided

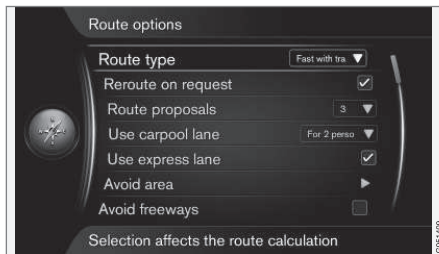
To allow guidance through a selected area that was previously set to be avoided, it has to be deactivated. To do so:

1. Scroll to the area in the list + **OK**.
2. Select **Deactivate** + **OK**: the area is deactivated and will no longer be avoided when a route is calculated.

It is also possible to restrict guidance on sections of a road, see (p. 56).

Adapting a route

This feature makes it possible to avoid certain types of traffic situations such as toll roads, ferries, etc.



Settings → Route options → Avoid freeways

To avoid a type of road, etc., on your itinerary, scroll to the alternative on the screen and press **OK**.

The alternatives include⁴:

- **Avoid freeways**
- **Avoid toll roads**
- **Avoid tunnels**
- **Avoid ferries**

When you have made your selection(s), exit the menu by pressing **EXIT** or **NAV**.



NOTE

- If a route has already been set when one or more of these alternatives are changed, there may be a slight delay in guidance as the system recalculates the route.
- If the system has been set to avoid toll roads, highways, etc., roads of this type will only be used when there are no other alternatives.

Related information

- Route options (p. 61)
- Route options – avoiding areas (p. 63)

⁴ This list may vary depending on the state/province, area, etc.

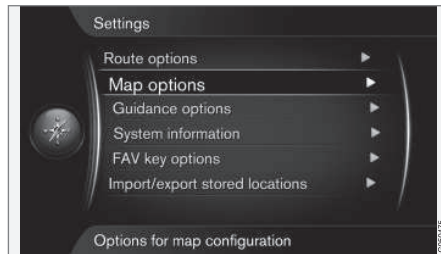


Map options

This feature enables you to make settings for displaying the map on the screen.

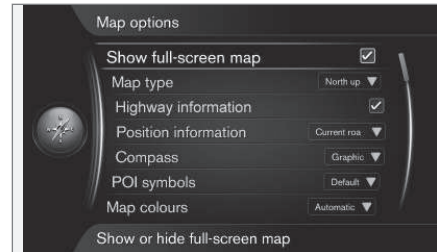
The alternatives include:

- Full-screen map
- Compass
- Highway information
- Information about your current location
- Points of Interest (POI)
- Map colors



Settings → Map options

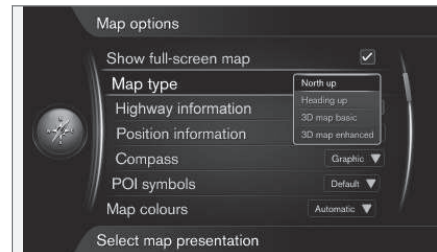
Full-screen map



Settings → Map options → Show full-screen map

Mark this selection + **OK** to show the map full-screen. No other information (temperature, radio station, etc.) will be displayed on the upper or lower sections of the screen.

Map type

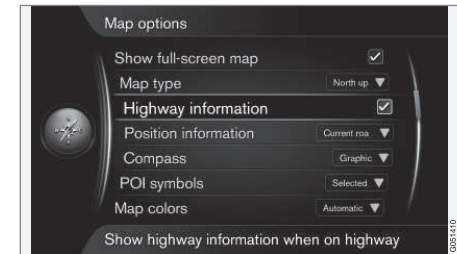


Settings → Map options → Map type

Select the type of map to be displayed on the screen. Confirm with **OK**.

- **North up:** the map will always have north at the top of the screen. The "car" symbol will move in the current direction on the screen.
- **Map heading up:** the "car" symbol will be in the center of the map and will always point upward. The map will rotate under the symbol, depending on the direction of the road.
- **3D map basic:** the map will be displayed at an angle from above and the "car" symbol will be at the center of the map and will always point upward.
- **3D map enhanced:** the same as **3D map basic** but with objects such as buildings, etc. displayed on the map.

Highway information



Settings → Map options → Highway information



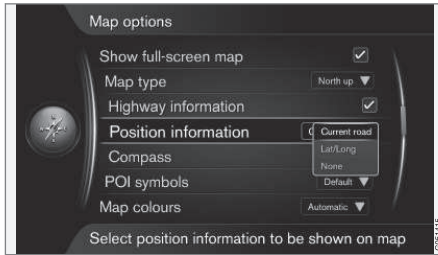
11 Settings



If you are driving on a highway, the next 3 exits will be displayed, e.g., exits where there are rest areas or gas stations. The list is sorted so that the nearest exit is at the bottom of the list.

Select **Highway information** + **OK** to select (activate) the function.

Information about your current location



Settings → Map options → Position information

Activate the desired alternative by pressing **OK**.

- **Current road:** the name of the road where you are driving/cursor is pointing is displayed.
- **Lat/Long:** the location's co-ordinates where you are driving/cursor is pointing is displayed.
- **None:** No information will be displayed.

Compass



Settings → Map options → Compass



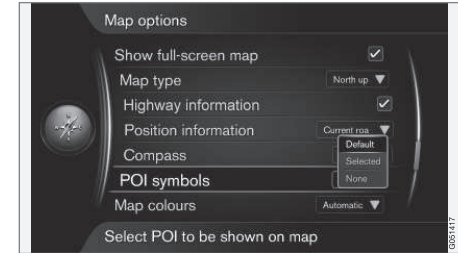
The direction in which you are driving will be displayed as a compass pointer or with letters.



- **Graphic** + **OK:** a symbol indicates the compass heading.
- **Text** + **OK:** letters (**N** for north, **W** for west, **S** for south or **E** for east) indicate the compass heading.

Set the map orientation (**north** or **direction** toward the top of the screen). See also the heading "Compass" above.

Point of interest (POI) symbols



Settings → Map options → POI symbols

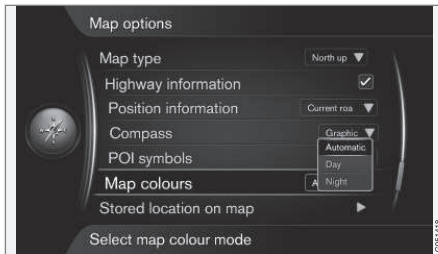
Select the POI symbols to be displayed on the map. Select by pressing **OK**.

- **Default:** POI specified by function.
- **Selected:** Turn **TUNE** + **OK** to select each type of POI to be displayed on the map.
- **None**

See Points of Interest (POI) (p. 80) for examples of POIs.



Map colors

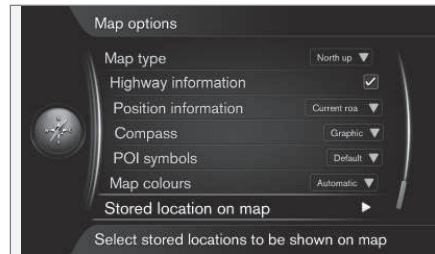


Settings → Map options → Map colors

Select an alternative and confirm with **OK**.

- **Automatic:** a sensor monitors the ambient lighting conditions and changes map colors automatically.
- **Day:** colors and contrast adapted for daylight conditions.
- **Night:** colors and contrast adapted for dark conditions.

Stored location on the map



Settings → Map options → Stored location on map

All stored locations are listed here.

- Mark the ones to be displayed with the cursor + **OK**. Exit the menu by pressing **EXIT** or **NAV**.

Related information

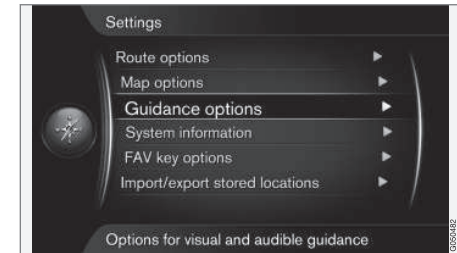
- Route options (p. 61)

Guidance options

This feature enables you to make guidance-related settings.

These settings include

- arrival time/remaining travel time
- street names in voice guidance
- guidance displayed in the instrument panel
- automatic reading of traffic information
- automatic fadeout
- voice guidance
- speed camera alerts



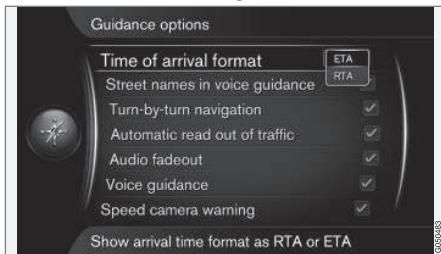
Settings → Guidance options



11 Settings



Arrival time/remaining travel time

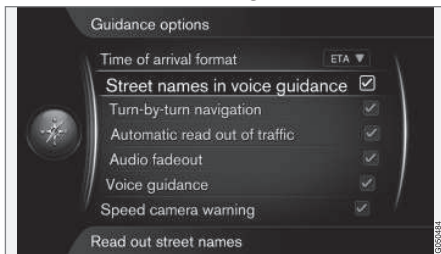


Settings → Guidance options → Time of arrival format

Activate your choice with **OK**.

- **ETA**: estimated arrival time
- **RTA**: estimated remaining travel time

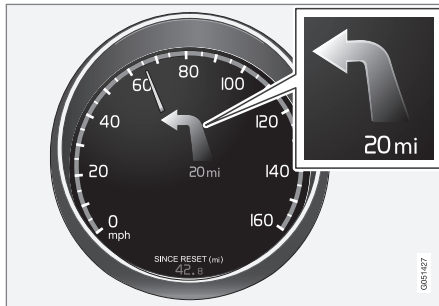
Street names in voice guidance⁵



Settings → Guidance options → Street names in voice guidance

Scroll to **Street names in voice guidance** + **OK** to select/deselect a function where voice guidance will also say the names of streets.

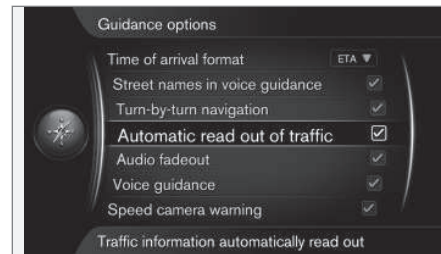
Turn-by-turn navigation



Settings → Guidance options → Turn-by-turn navigation

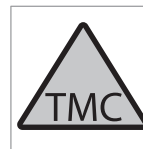
Scroll to **Turn-by-turn navigation** + **OK** to select/deselect a function that displays the next turn in your route and the distance to it in the instrument panel.

Automatic read-out



Settings → Guidance options → Automatic read out of traffic

Scroll to **Automatic read out of traffic** + **OK** to select/deselect a function where traffic information will be read aloud.



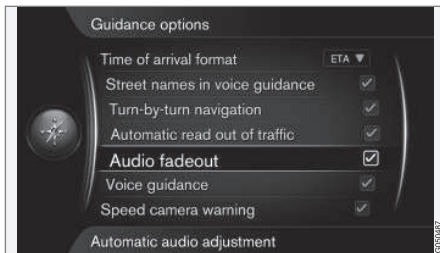
This symbol on the screen indicates that traffic information is available in the current broadcast area. The symbol will be RED or YELLOW:

- **RED**: the information will be read aloud and the location of the problem will be shown on the map, see also (p. 74)
- **YELLOW**: the information will not be read aloud but the location of the problem will be shown on the map

⁵ Certain markets/languages only.



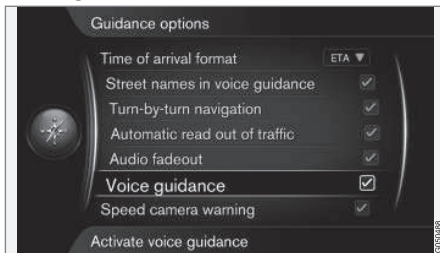
Automatic fadeout



Settings → Guidance options → Audio fadeout

Scroll to **Audio fadeout** + **OK** to select/deselect a function that e.g., mutes infotainment system sound when voice guidance is given or traffic information is read aloud.

Voice guidance



Settings → Guidance options → Voice guidance

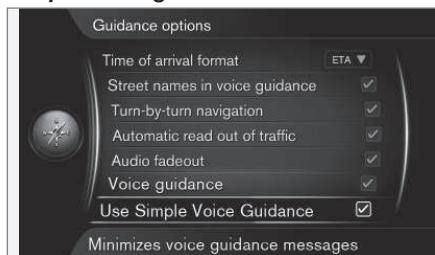
Scroll to **Voice guidance** + **OK** to select/deselect a function that provides spoken guidance.

i NOTE

If this alternative is not selected, no voice guidance will be provided. Only visual on-screen guidance will be available.

For additional information, see (p. 34).

Simple voice guidance

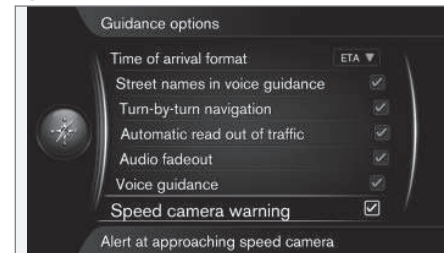


Settings → Guidance options → Use simple voice guidance

Voice guidance is normally repeated 3 times prior to each guidance point in your route: once in advance, once immediately prior to a turn and once when the turn should be made. With this function activated, voice guidance will only be provided once.

- Scroll to **Use simple voice guidance** + **OK** and check the box to activate. Exit the menu by pressing **EXIT** or **NAV**.

Speed cameras



Settings → Guidance options → Speed camera warning

An audible and visual signal will be provided to alert the driver that the vehicle is approaching a speed camera.

- Scroll to **Speed camera warning** + **OK** and check the box to activate. Exit the menu by pressing **EXIT** or **NAV**.



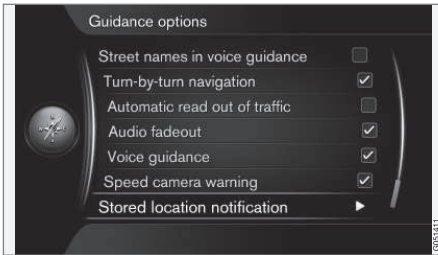
11 Settings



NOTE

- Speed limits can be changed and may not correspond to the information in the navigation system's database.
- The driver is always responsible for obeying traffic and speed regulations.
- The type of information that may be displayed on the map is regulated by national/regional legislation. See www.volvocars.com/navi for up-to-date information.

Stored location notification



Settings → Guidance options → Stored location notification

An audible signal alerts the driver that the vehicle is approaching a stored location.

1. Scroll to **Stored location notification + OK**, check the box and open a list of all stored locations.
2. Turn **TUNE** to select the locations where **no signal** will be given and deselect them with **OK**. Exit the menu with **EXIT** or **NAV**.

POI notification

Settings → Guidance options → Travel POI notification

An audible signal alerts the driver that the vehicle is approaching a POI that is part of a "Travel guide", see (p. 51).

- Scroll to **Travel POI notification + OK**, check the box and activate the function. Exit the menu with **EXIT** or **NAV**.

NOTE

Functions related to Travel Guide are only available via a connected USB device that contains Travel Guide information, see (p. 51).

Travel guide alert

Settings → Guidance options → Guided tour notification

An audible signal alerts the driver that the vehicle is approaching a "Travel guide" , see (p. 51).

- Scroll to **Guided tour notification + OK**, check the box and activate the function. Exit the menu with **EXIT** or **NAV**.

NOTE

Functions related to Travel Guide are only available via a connected USB device that contains Travel Guide information, see (p. 51).

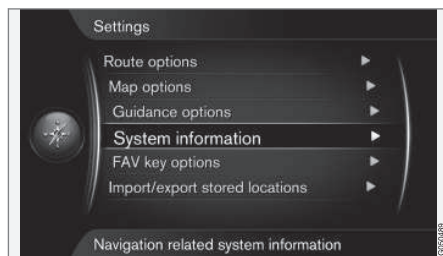
Related information

- Route options (p. 61)

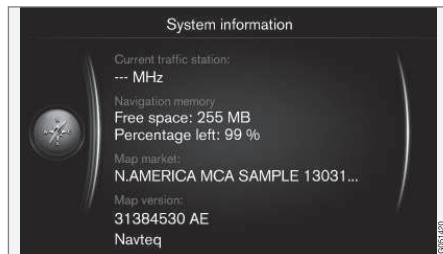


System information

System information shows the current status of the navigation system.



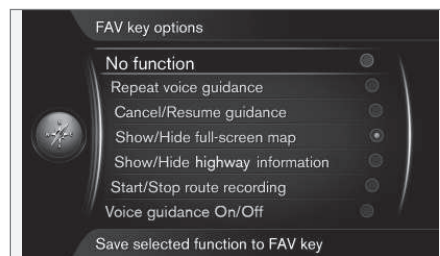
Settings → System information



Scroll to **Settings** → **System information** + **OK** to display a brief summary of the navigation system's current status, such as the transmitter from which it is currently receiving traffic information, the operative map data and its version.

The FAV button

The **FAV** button can be programmed to quickly start/stop various navigation system functions.



Settings → FAV key options

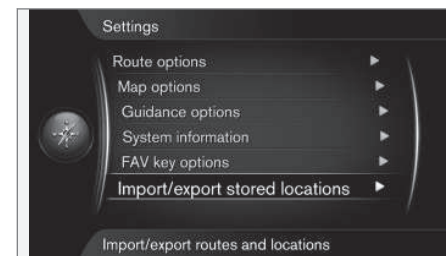
★ FAV The **FAV** button on the center console keypad can be programmed in one of the following ways for the navigation system:

- **No function**
- **Repeat voice guidance**
- **Cancel/Resume guidance**
- **Show/Hide full-screen map**
- **Show/Hide highway information**
- **Start/Stop route recording**
- **Voice guidance On/Off**

Scroll to your selection and press **OK** to activate the function. Exit the menu by pressing **EXIT** or **NAV**.

Import/export stored destinations

You can import or export stored destinations, routes or itineraries.



Settings → Import/export stored locations

Routes, itineraries or destinations stored in the navigation system's memory (see Search



11 Settings



using a stored location (p. 47)) can be copied to a USB flash drive ⁶.

The map database can also be supplemented with POIs from other sources via a USB flash drive if they are in the "gpx" format.



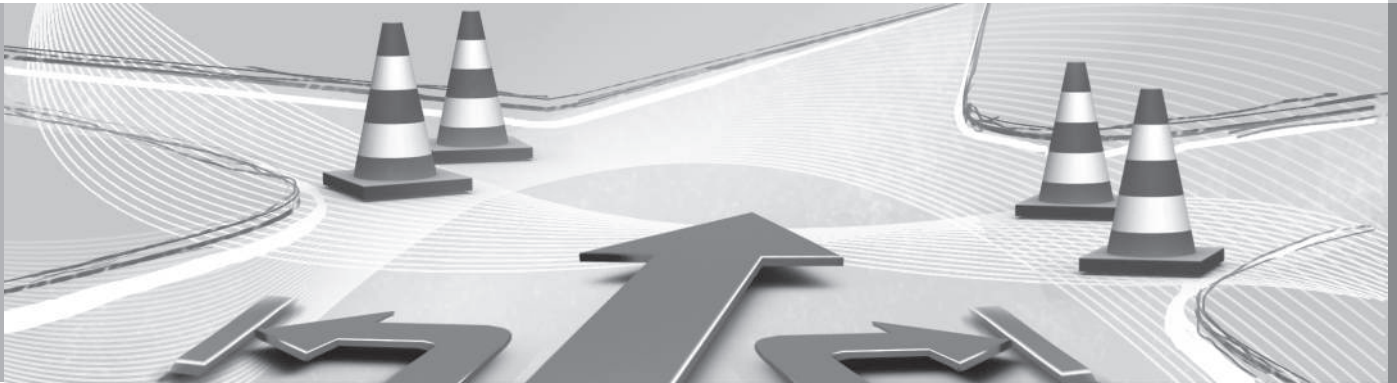
NOTE

The format for POI files and how they can be downloaded from the Internet is determined by their respective manufacturers/distributors, which means that there is no standardized process for doing so. Therefore, this article cannot provide exact step-by-step instructions. Contact your Volvo retailer if you have any questions.

⁶ For additional information, see your owner's information or the Sensus Infotainment supplement.

12

TRAFFIC INFORMATION





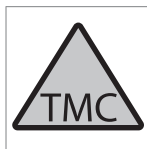
12 Traffic information

Traffic information

The following lists traffic-related symbols and instructions on how to open and access the information that they contain.

General information

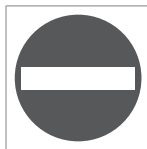
The navigation system constantly receives updated traffic information.



This symbol indicates that traffic information is available in the current broadcast area. This symbol will be RED or YELLOW, depending on the type of information received.

- RED: the information will be read aloud and the location of the problem will be shown on the map
- YELLOW: the information will not be read aloud but the location of the problem will be shown on the map

The read function can be switched off, see (p. 67).



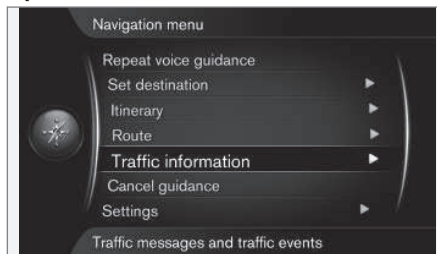
This symbol marks the location of a traffic problem. For more information, see the heading "**Traffic on map**" in the article Traffic information with a specified destination (p. 75).

NOTE

Traffic information is not available in all areas.

The broadcast range of traffic information is constantly being expanded.

Open traffic information



Traffic information

Scroll to **Traffic information** + **OK** to display information about traffic problems. The way in which this information is displayed will differ depending on whether or not an itinerary has been set.

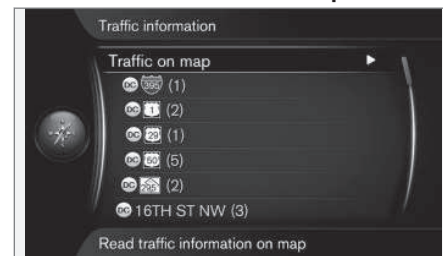
Related information

- Traffic information – with no destination selected (p. 74)
- Traffic information with a specified destination (p. 75)
- Extent of a traffic problem (p. 77)

Traffic information – with no destination selected

This function makes it possible to show traffic problems in situations where no destination has been selected.

Traffic information on the map



Scroll function on the map

Traffic information → Traffic on map

Scroll to **Traffic on map** + **OK** to search for traffic problems using the scroll function, see the description under the heading "Traffic information on the map" (p. 75).



All traffic



Traffic information in the broadcast area

Scrolling to a road/street + **OK** opens the same function as in the article "Traffic information with a specified destination", see (p. 75).

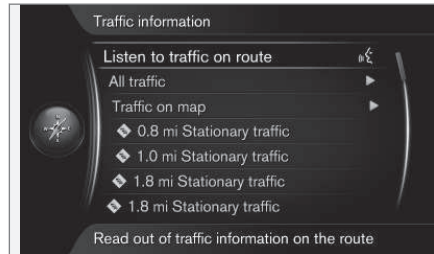
Related information

- Traffic information (p. 74)
- Traffic information with a specified destination (p. 75)
- Extent of a traffic problem (p. 77)

Traffic information with a specified destination

This function displays traffic information (p. 74) on the map using the scroll function (p. 38).

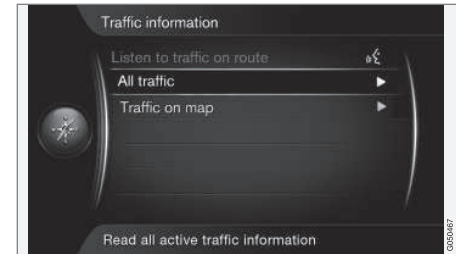
Listen to traffic information



Traffic information → Listen to traffic on route

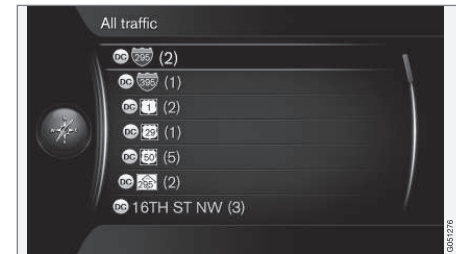
Scroll to **Listen to traffic on route** + **OK** to activate the voice function for current traffic information along your route.

All traffic



Traffic information → All traffic

Scroll to **All traffic** + **OK** to list all traffic information in the current broadcast area.



Traffic information in the broadcast area

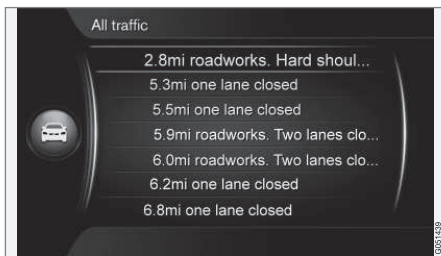
Traffic information is primarily grouped by country (in border areas) followed by road numbers and street names.



12 Traffic information



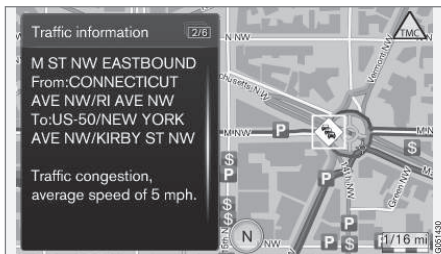
Scroll to a road/street + **OK** to view specific traffic information for the selection, see the following illustration:



Specific traffic information

Traffic information for a specific road/street is listed according to how severe the problem is, e.g., a complete stop in traffic will be at the top of the list.

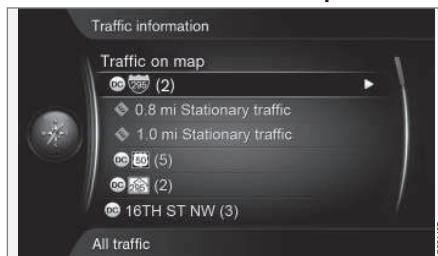
Scroll to **Traffic information** + **OK** to view additional information and the location on the map, see the following illustration:



Traffic problems on the map

The map image will be centered around the location of the problem.

Traffic information on the map



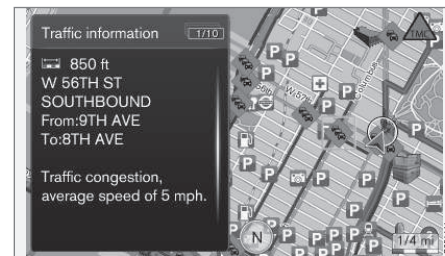
Traffic information → Traffic on map

Scroll to **Traffic on map** + **OK** to search for traffic problems using the scroll function (p. 38).



Information about a specific problem can be displayed using the scroll function.

1. Scroll the cursor to the traffic incident/symbol that you would like detailed information about; a yellow frame will appear around the symbol.
2. Press **OK** to display information such as shown in the following example:



Information about a traffic problem is linked to the respective symbols and the following will be displayed if available:

- street name/road number
- country
- type of problem
- extent of the problem
- expected duration of the problem

If there are several traffic problems inside the cursor's frame, the first problem displayed will be the one closest to the center of the cursor.

Numbers such as "2/5" at the top of the screen indicate that the current information is the second problem of a total of five within



the frame. Press **OK** repeatedly to scroll to the other information.

- Return to the map view with **EXIT** or **NAV**.

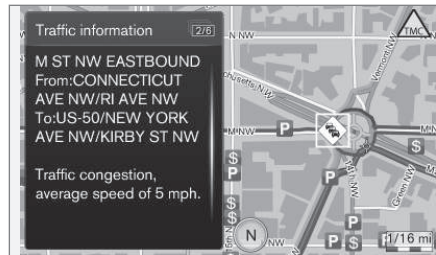
Direct listed information



Traffic information → Traffic on map

Direct listed traffic problems, e.g., "0.8 mi Stationary traffic" indicates that the information pertains to your current itinerary.

Scroll to a traffic problem + **OK** to display additional information and the location on the map, see the following illustrations:



Traffic problem on the map

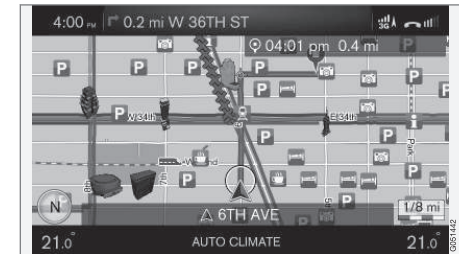
The map image will be centered around the location of the problem.

Related information

- Traffic information (p. 74)
- Traffic information – with no destination selected (p. 74)
- Extent of a traffic problem (p. 77)

Extent of a traffic problem

This function shows the extent (scope) of the traffic problem.



Extent of a traffic problem

Some traffic problems may affect an extended area.

In addition to the symbol marking the location of the traffic problem, the effected stretch of road will be indicated by red Xs (xxxxx).

- The number of Xs indicates the extent of the problem.
- The direction is indicated by the side of the road that the Xs are on.

Size of the traffic information area

The map scale determines the amount of traffic information (p. 74) that can be displayed. The larger the area on the map the greater the number of traffic problems that can be shown.



12 Traffic information



Related information

- Traffic information (p. 74)
- Traffic information with a specified destination (p. 75)
- Traffic information – with no destination selected (p. 74)

13

SYMBOLS ON THE MAP

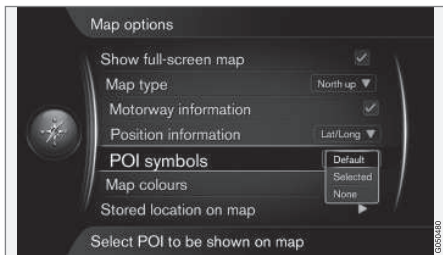




13 Symbols on the map

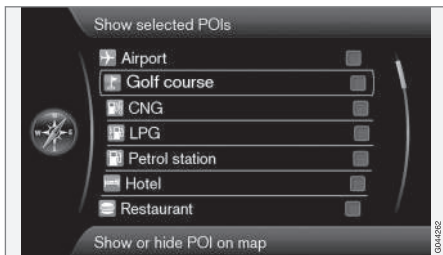
Points of Interest (POI)

This article describes the procedure for selecting the points of interest to be displayed on the map and their symbols.



Settings → Map options → POI symbols

Select the POIs to be shown on the map by selecting **Selected** or **None**. For additional information, see the heading "Point of interest (POI) symbols" (p. 65).



Selected POI s are shown on the map

- Select/mark POIs by turning **TUNE**, select/deselect by pressing **OK** and exit by pressing **EXIT**.

The number of POIs displayed is limited in order to avoid too much clutter on the map. Zoom in on a specific area to see a greater number of POIs.

NOTE





Symbols may be added/removed under **Settings → Map options → POI symbols** when the system is updated.

The POI symbols include:

	Car dealer/repair
	Gas station
	Car repair
	Parking
	Tourist attraction
	Golf
	Cinema

	Amusement park Recreation
	Restaurant
	Bar or cafe
	Shopping center
	Hotel
	Railway transport Railway station Railway access
	Airport
	Bus station
	Ferry terminal
	Government or community facility Government office
	Police/emergency
	Library
	Hospital or health care facility



	Pharmacy
	Cash dispenser ATM/Bank exchange
	Post office
	Education facility

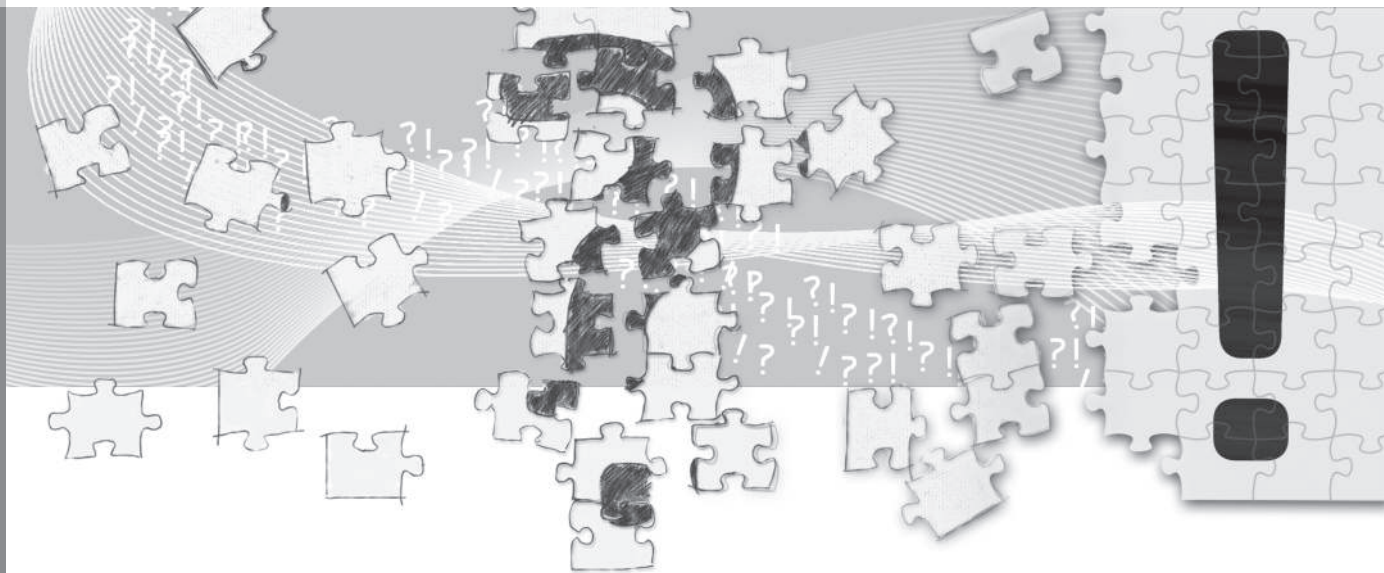
Related information

- Search using a Point of Interest (POI)
(p. 46)

14



QUESTIONS & ANSWERS





General information/frequently asked questions

The vehicle's location on the map is not correct

The navigation system's accuracy is approx. 65 ft (20 meters).

Accuracy may be reduced slightly when driving on a road that is parallel with another road, winding roads, multi-level roads and long straightaways with no distinct curves.

High mountains, buildings, tunnels, viaducts, multi-level roads, etc., may also affect GPS signal reception, which may also reduce the system's capacity to calculate the vehicle's location accurately.

The system does not always calculate the fastest/shortest route

Route calculation takes factors such as distance, road width, type of road, number of right/left turns, traffic circles, etc., into account to find the theoretically best route. Familiarity with an area may enable you to find a more efficient route to your destination.

The system uses toll roads, highways or ferries even though I have chosen to avoid them

When calculating longer routes, the system may have to choose major roads for technical reasons.

The types of roads that you have chosen to avoid will not be used if there are viable alternatives.

After being transported, the vehicle's location on the map is not correct

If the vehicle has been transported (e.g., on a ferry or train) where GPS signals have been blocked, it may take up to 5 minutes before its location will be shown correctly.

The vehicle's location on the map is not correct after the battery has been disconnected

If the vehicle's GPS antenna has not had electrical current, it may take more than 5 minutes for signals to be received and the vehicle's location determined.

The car symbol moves erratically after new tires have been installed

In addition to GPS signals, the navigation system also uses the speedometer and a gyroscopic sensor to calculate the vehicle's current location and speed. If e.g., snow tires have been installed, the system has to "learn" the new tire dimensions.

To do so, make several full left and right turns at low speed in a suitable place.

The map does not correspond to actual road conditions

Due to road changes/additions/rerouting, the map database may not be up-to-date. Consult your Volvo retailer.

See also www.volvocars.com/navi and www.volvocars.com/mapupdate for additional map information.

The map scale changes occasionally

Map information may not be available for certain areas and for this reason, the system will automatically change the map scale.

The car symbol jumps forward or spins

Before you begin to drive, the system may need several seconds to determine the vehicle's location.

Switch off the navigation system and the ignition. Restart but remain at a standstill for a minute or so before driving.

How can I make a long trip without setting a route to the cities that I plan to drive through? What is the easiest way of setting an itinerary?

Specify a destination directly on the map using the cursor. The system will automatically guide you to the final destination even if you do not drive to the intermediate destinations.



The map information is not up-to-date

Consult your Volvo retailer about a map update.

See also www.volvocars.com/navi or www.volvocars.com/mapupdate.

How can I check which map version I have?

In the menu system, go to **Settings** → **System information** + **OK** to see the map version and the geographic areas covered, see (p. 71).

15

MAP AND SYSTEM INFORMATION





15 Map and system information

Maps – content

Volvo offers maps covering North America as well as other parts of the world.

These maps are constantly being updated and the information they contain is steadily being increased.

NOTE

Map data may not provide complete coverage of all remote areas.

The areas covered are constantly being expanded, which means that map updates are necessary occasionally. Contact your Volvo retailer.

See www.volvocars.com/navi and www.volvocars.com/mapupdate for map and Sensus Navigation-related information. Also, contact your Volvo retailer if you should need maps that cover another geographic area.

Map updates

During updates, new information/map data is transferred to the navigation system and outdated information is deleted.

Map updates are downloaded from the Internet¹ to a USB flash drive². The information is then transferred to the vehicle's navigation system using the USB socket in the tunnel console.³

NOTE

- Instructions for downloading information and updating the navigation system are available on the Internet.
- Contact your Volvo retailer if you have any questions regarding the map update or go to www.volvocars.com/navi and www.volvocars.com/mapupdate.

Updating

Follow the on-screen instructions for updating the navigation system. They will show the various stages in the update procedure and the time remaining.

NOTE

Some of the navigation system's functions will be disabled or reduced while updating is in progress.

To update:

1. With the vehicle parked outdoors, start the engine.
2. Connect the USB flash drive to the vehicle's USB socket and follow the instructions shown on the center console screen.
3. When **Map update finished** is displayed, the procedure is completed and all of the navigation system's functions can be used normally.

NOTE

Updating the system may add new functionality that is not described in this manual.

Continuing an interrupted update

If the update was not completed when the engine was switched off, the procedure can be restarted where it left off the next time the engine is started. To do so:

¹ See the information at www.volvocars.com/mapupdate

² The flash drive must have at least 20 Gb of free space.

³ See your owner's manual or the Sensus Infotainment supplement for information about using the USB socket.



- If the USB flash drive is still in the USB socket, the update will restart automatically.
- If the flash drive is not connected, restart the engine and reconnect the USB flash drive to the USB socket. The update will restart automatically.

License agreement

The following is information for the end-user of the Sensus Navigation system.

ENDUSER LICENSE AGREEMENT

ENDUSER TERMS

The content provided (“Data”) is licensed, not sold. By opening this package, or installing, copying, or otherwise using the Data, you agree to be bound by the terms of this agreement. If you do not agree to the terms of this agreement, you are not permitted to install, copy, use, resell or transfer the Data. If you wish to reject the terms of this agreement, and have not installed, copied, or used the Data, you must contact your retailer or HERE North America, LLC (as defined below) within thirty (30) days of purchase for a refund of your purchase price. To contact HERE, please visit www.here.com.

The Data is provided for your personal, internal use only and may not be resold. It is protected by copyright, and is subject to the following terms (this “EndUser License Agreement”) and conditions which are agreed to by you, on the one hand, and HERE and its licensors (including their licensors and suppliers) on the other hand. For purposes of these terms, “HERE” shall mean (a) HERE North America, LLC with respect to Data for the Americas and/or the Asia Pacific region and (b) HERE Europe B.V. for Data for Europe, the Middle East and/or Africa.

The Data includes certain information and related content provided under license to HERE from third parties and is subject to the applicable supplier terms and copyright notices set forth at the following URL: http://corporate.navteq.com/supplier_terms.html



TERMS AND CONDITIONS

License Limitations on Use: You agree that your license to use this Data is limited to and conditioned on use for solely personal, non-commercial purposes, and not for service bureau, timesharing or other similar purposes. Except as otherwise set forth herein, you agree not to otherwise reproduce, copy, modify, decompile, disassemble or reverse engineer any portion of this Data, and may not transfer or distribute it in any form, for any purpose, except to the extent permitted by mandatory laws.

License Limitations on Transfer: Your limited license does not allow transfer or resale of the Data, except on the condition that you may transfer the Data and all accompanying materials on a permanent basis if: (a) you retain no copies of the Data; (b) the recipient agrees to the terms of this End User License Agreement; and (c) you transfer the Data in the exact same form as you purchased it by physically transferring the original media (e.g., the CD-ROM or DVD you purchased), all original packaging, all Manuals and other documentation. Specifically, Multidisc sets may only be transferred or sold as a complete set as provided to you and not as a subset thereof.

Additional License Limitations: Except where you have been specifically licensed to do so by HERE in a separate written agreement, and without limiting the preceding

paragraph, your license is conditioned on use of the Data as prescribed in this agreement, and you may not (a) use this Data with any products, systems, or applications installed or otherwise connected to or in communication with vehicles capable of vehicle navigation, positioning, dispatch, real time route guidance, fleet management or similar applications; or (b) with, or in communication with, including without limitation, cellular phones, palmtop and handheld computers, pagers, and personal digital assistants or PDAs.

Warning: This Data may contain inaccurate or incomplete information due to the passage of time, changing circumstances, sources used and the nature of collecting comprehensive geographic Data, any of which may lead to incorrect results.

No Warranty: This Data is provided to you “as is”, and you agree to use it at your own risk. HERE and its licensors (and their licensors and suppliers) make no guarantees, representations or warranties of any kind, express or implied, arising by law or otherwise, including but not limited to, content, quality, accuracy, completeness, effectiveness, reliability, fitness for a particular purpose, usefulness, use or results to be obtained from this Data, or that the Data or server will be uninterrupted or error - free. **Disclaimer of Warranty:** HERE AND ITS LICENSORS (INCLUDING THEIR

LICENSORS AND SUPPLIERS) DISCLAIM ANY WARRANTIES, EXPRESS OR IMPLIED, OF QUALITY, PERFORMANCE, MERCHANTABILITY, FITNESS FOR A PARTICULAR PURPOSE OR NON-INFRINGEMENT. Some States, Territories and Countries do not allow certain warranty exclusions, so to that extent the above exclusion may not apply to you.

Disclaimer of Liability: HERE AND ITS LICENSORS (INCLUDING THEIR LICENSORS AND SUPPLIERS) SHALL NOT BE LIABLE TO YOU IN RESPECT OF ANY CLAIM, DEMAND OR ACTION, IRRESPECTIVE OF THE NATURE OF THE CAUSE OF THE CLAIM, DEMAND OR ACTION ALLEGING ANY LOSS, INJURY OR DAMAGES, DIRECT OR INDIRECT, WHICH MAY RESULT FROM THE USE OR POSSESSION OF THIS DATA; OR FOR ANY LOSS OF PROFIT, REVENUE, CONTRACTS OR SAVINGS, OR ANY OTHER DIRECT, INDIRECT, INCIDENTAL, SPECIAL OR CONSEQUENTIAL DAMAGES ARISING OUT OF YOUR USE OF OR INABILITY TO USE THIS DATA, ANY DEFECT IN THIS DATA, OR THE BREACH OF THESE TERMS OR CONDITIONS, WHETHER IN AN ACTION IN CONTRACT OR TORT OR BASED ON A WARRANTY, EVEN IF HERE OR ITS LICENSORS HAVE BEEN ADVISED OF THE POSSIBILITY OF SUCH DAMAGES. Some States, Territories and Countries do not allow



certain liability exclusions or damages limitations, so to that extent the above may not apply to you.

Export Control: You agree not to export from anywhere any part of the Data or any direct product thereof except in compliance with, and with all licenses and approvals required under, applicable export laws, rules and regulations, including but not limited to the laws, rules and regulations administered by the Office of Foreign Assets Control of the U.S. Department of Commerce and the Bureau of Industry and Security of the U.S. Department of Commerce. To the extent that any such export laws, rules or regulations prohibit HERE from complying with any of its obligations hereunder to deliver or distribute Data, such failure shall be excused and shall not constitute a breach of this Agreement.

Entire Agreement: These terms and conditions constitute the entire agreement between HERE (and its licensors, including their licensors and suppliers) and you pertaining to the subject matter hereof, and supersedes in their entirety any and all written or oral agreements previously existing between us with respect to such subject matter.

Severability: You and HERE agree that if any portion of this agreement is found illegal or unenforceable, that portion shall be severed

and the remainder of the Agreement shall be given full force and effect.

Governing Law: The above terms and conditions shall be governed by the laws of the State of Illinois (for Data for the Americas and/or the Asia Pacific region) or The Netherlands (for Data for Europe, the Middle East and Africa), without giving effect to (i) its conflict of laws provisions, or (ii) the United Nations Convention for Contracts for the International Sale of Goods, which is explicitly excluded. For any and all disputes, claims and actions arising from or in connection with the Data (“Claims”), you agree to submit to the personal jurisdiction of (a) the State of Illinois for Claims related to Data for the Americas and/or the Asia Pacific region provided to you hereunder, and (b) The Netherlands for Data for Europe, the Middle East and/or Africa provided to you hereunder.

Government End Users: If the Data is being acquired by or on behalf of the United States government or any other entity seeking or applying rights similar to those customarily claimed by the United States government, this Data is a “commercial item” as that term is defined at 48 C.F.R. (“FAR”) 2.101, is licensed in accordance with this End User License Agreement, and each copy of Data delivered or otherwise furnished shall be marked and embedded as appropriate with the following “Notice of Use”, and be treated in accordance with such Notice:

NOTICE OF USE

CONTRACTOR (MANUFACTURER/
SUPPLIER) NAME:

HERE

CONTRACTOR (MANUFACTURER/
SUPPLIER) ADDRESS:

**425 West Randolph Street, Chicago, IL
60606.**

This Data is a commercial item as defined in FAR 2.101 and is subject to the End User License Agreement under which this Data was provided. © 1987-2013 HERE. All rights reserved. If the Contracting Officer, federal government agency, or any federal official refuses to use the legend provided herein, the Contracting Officer, federal government agency, or any federal official must notify HERE prior to seeking additional or alternative rights in the Data. © 1987-2013 HERE. All rights reserved.



CONTRATO DE LICENCIA DE USUARIO FINAL

Términos del Usuario Final

El contenido (Información) que se proporciona se hace bajo licencia, no se vende. Al abrir este paquete, instalar, copiar, o de alguna otra manera usar la Información, usted está de acuerdo en regirse por los términos de este contrato. Si no está de acuerdo con los términos de este contrato, no se le permitirá instalar, copiar, revender ni transferir la Información. Si desea rechazar los términos del presente, y no ha instalado, copiado ni usado la Información, debe comunicarse con su vendedor, o con HERE North America, LLC ("HERE") dentro de 30 días después de comprar el producto para obtener un reembolso por el precio de compra. Para comunicarse con HERE, por favor visite www.here.com.

La Información que se proporciona es para su uso personal interno únicamente y no se puede revender. La Información está protegida por derecho de autor y sujeta a los siguientes términos (este "Contrato de Licencia de Usuario Final") y condiciones acordados por usted, por un lado, y por el otro lado, por HERE North América, LLC ("HERE") y sus licenciantes (incluyendo los licenciantes y proveedores de estos). Para propósitos de éstos términos, "HERE" significa (a) HERE North America, LLC con respecto a los Datos para las Americas y/o

para la región Asia Pacífico y (b) HERE Europe B.V.a para los Datos de Europa, Medio Oriente y/o África.

Los Datos incluyen cierta información y contenido relacionado bajo licencia a HERE por terceros y está sujeta a los términos aplicables del proveedor y avisos de derechos de autor contenidas en el siguiente URL: http://corporate.navteq.com/supplier_terms.html

TÉRMINOS Y CONDICIONES

Limitaciones de la licencia sobre el uso: Usted acuerda que su licencia para usar esta Información queda limitada y condicionada para propósitos únicamente personales, no comerciales, y no es para oficinas de servicio, tiempo compartido ni ningún otro propósito similar. Salvo que se establezca lo contrario en el presente documento, usted acuerda que de ninguna otra forma ha de reproducir, copiar, modificar, descompilar, desarmar ni aplicar ingeniería inversa sobre ninguna parte de dicha Información, y por ningún motivo ni de ninguna otra forma podrá transferir ni distribuir, salvo en la medida en que sea permitido por leyes obligatorias. Limitaciones de la Licencia Sobre

Transferencias: Su licencia limitada no permite la transferencia ni reventa de la Información, salvo en las condiciones que usted pueda transferir la Información y todo el material que le acompañe de manera

permanente si: (a) usted no se queda con ninguna copia de la Información; (b) el beneficiario está de acuerdo con los términos de este Contrato de licencia de usuario final; y (c) usted transfiere la Información en la manera exacta en la que la compró transfiriendo físicamente el medio original (por ejemplo, CD-ROM o DVD que haya comprado), toda la envoltura original, todos los Manuales y otra documentación. Específicamente, los sets de varios discos únicamente podrán ser transferidos o vendidos como un set complete tal y como le fue proporcionado a usted y no como un set adicional.

Limitaciones Adicionales de la Licencia: Salvo cuando HERE le haya dado licencia específica para hacerlo por medio de un acuerdo escrito separado, y sin limitar el párrafo anterior, su licencia queda condicionada sobre el uso de la Información según lo prescribe este acuerdo y usted no podrá (a) usar esta Información con ningún producto, sistema ni aplicación instalado o de alguna otra manera conectado a o en comunicación con los vehículos capaces de navegar vehículos, posicionar, despachar, guiar rutas en tiempo real, manejar flotas, o aplicaciones similares; o (b) con o en comunicación con, incluyendo de manera enunciativa, pero no limitativa, teléfonos móviles, computadoras palmtops o de mano,



bíper o localizador de personas, y asistentes personales digitales o PDAs

Advertencia: La presente Información puede contener Información imprecisa o incompleta debido al paso del tiempo, cambio de circunstancias fuentes utilizadas, y el hecho de recopilar una gran cantidad de Información geográfica, lo que puede tener como consecuencias resultados incorrectos.

No existencia de garantía: Esta Información se le proporciona en el estado en el que se encuentra y usted acuerda utilizarla bajo su propio riesgo. Ni HERE ni sus licenciantes (ni los licenciantes ni proveedores de estos) otorgan ninguna garantía, representación ni obligación de ninguna clase ni declaración, expresa ni tácita, que surja de la ley ni de cualquier otro tipo, incluyendo, sin limitación, ninguna sobre contenido, calidad, precisión, totalidad de Información, efectividad, confiabilidad, nivel en el que dicho sistema sea adecuado para determinado fin, utilidad, uso o resultados a obtenerse a partir de dicha Información, ni de que la Información ni el servidor no tendrán interrupciones ni estarán libres de errores.

Exclusión de Garantía: HERE Y SUS LICENCIANTES, (INCLUYENDO A LOS LICENCIANTES Y PROVEEDORES DE ESTOS), SE DESLINDAN DE TODA GARANTÍA, EXPRESA O TÁCITA, RESPECTO DE LA CALIDAD, DESEMPEÑO, COMERCIALIZACIÓN, DE QUE EL SISTEMA

SEA ADECUADO PARA DETERMINADO FIN, E INCUMPLIMIENTO. Algunos estados, territorios y países no permiten ciertas exclusiones de garantía, por lo que en esa medida, la exclusión anterior podrá no ser aplicable a usted.

Exclusión de Responsabilidad: NI HERE NI SUS LICENCIANTES (INCLUYENDO A LOS LICENCIANTES Y PROVEEDORES DE ESTOS) SERÁN RESPONSABLES FRENTE A USTED RESPECTO DE NINGÚN HECHO QUE DÉ LUGAR A NINGUNA RECLAMACIÓN, DEMANDA NI ACCIÓN, INDEPENDIENTEMENTE DE LA NATURALEZA DE LA RECLAMACIÓN, DEMANDA, ACCIÓN O SUPUESTA PÉRDIDA O DAÑOS DIRECTOS O INDIRECTOS, QUE RESULTEN DEL USO O POSESIÓN DE ESTA INFORMACIÓN; NI POR NINGUNA PÉRDIDA DE UTILIDADES, INGRESOS, CONTRATOS NI AHORROS, NI POR NINGÚN OTRO DAÑO DIRECTO O INDIRECTO, CONSECUENCIAL, ESPECIAL O INCIDENTAL QUE SURJA DEL USO QUE LE DÉ, O DE SU INCAPACIDAD PARA UTILIZAR ESTA INFORMACIÓN, CUALQUIER DEFECTO EN ESTA INFORMACIÓN, NI EL INCUMPLIMIENTO DE LOS PRESENTES TÉRMINOS Y CONDICIONES, YA SEA QUE SE ENCUENTREN EN CONTRATO O EXTRA CONTRACTUALES O DE LOS TÉRMINOS DE ALGUNA GARANTÍA, AUNQUE HERE Y SUS LICENCIANTES HAYAN SIDO PREVENIDOS SOBRE LA

POSIBILIDAD DE LA EXISTENCIA DE DICHOS DAÑOS. Algunos estados, territorios y países no permiten ciertas exclusiones de responsabilidad, por lo que en esa medida, la exclusión anterior podrá no ser aplicable a usted.

Control de Exportaciones: Usted acuerda no exportar de ningún otro lado ningún componente de la Información, ni ningún producto directo de la misma, salvo en cumplimiento de, y con todas las licencias y aprobaciones que se requieran bajo las leyes, reglas y regulaciones de exportaciones administradas por la Oficina de Control de Activos Extranjeros (Office of Foreign Assets Control) del Departamento de Comercio de EE.UU. y la Oficina de Industria y Seguridad (Bureau of Industry and Security) del Departamento de Comercio de EE.UU. En la medida en que dichas leyes, reglas o regulaciones de exportación le prohíban a HERE cumplir con cualquiera de las obligaciones de entregar o distribuir la Información, dicha falla será disculpada y no habrá de constituir incumplimiento de este Contrato. Totalidad del Acuerdo: Estos términos y condiciones constituyen la totalidad del acuerdo entre HERE (y sus licenciantes, incluyendo a los licenciantes y proveedores de éstos) y usted, en relación con el objeto del presente contrato, y prevalece en su totalidad sobre cualquier



15 Map and system information



acuerdo escrito u oral anterior que exista entre nosotros con respecto de dicho objeto.

Terminación: Usted y HERE acuerdan que si se encuentra que cualquier porción de este contrato es ilegal o no es ejecutable, dicha porción será eliminada y el resto de este Acuerdo quedará en plena vigencia y efecto.

Derecho Aplicable: Los términos y condiciones mencionados anteriormente se regirán por las leyes del Estado de Illinois (para Información para las Américas y/o para la región Asia Pacífico) o por las leyes de los Países Bajos – Holanda (para la Información para Europa, Medio Oriente y/o África), sin dar efecto al (i) conflicto con otras leyes, o (ii) los Contratos de Compraventa de Bienes Internacionales por la Convención de las Naciones Unidas, misma que se excluye explícitamente. Para cualquier disputa, reclamación ó acción derivadas de ó en relación con los Datos (“Reclamación”), usted acepta someterse a la jurisdicción personal de (a) el Estado de Illinois para

Reclamaciones relacionadas a los Datos para las Américas y/o para la región Asia Pacífico proporcionada mediante el presente documento, y (b) a la de los Países Bajos – Holanda para los Datos de Europa, Medio Oriente y/o África proporcionada mediante el presente documento. Usuarios Finales Gubernamentales: En caso de que la Información sea adquirida por, o en representación del gobierno de Estados

Unidos o cualquier otra entidad buscando o solicitando tener derechos similares a aquellos usualmente reclamados por el gobierno de Estados Unidos, esta Información es un "objeto comercial" según se define dicho término en 48 C.F.R. (“FAR”) 2.101, se licencia de conformidad con el presente Contrato de Licencia de Usuario Final, y cada copia de la Información entregada o proporcionada de cualquier otra forma deberá estar marcada en la forma pertinente con la siguiente leyenda “Aviso de Uso” y ser tratada de conformidad con dicho Aviso.

AVISO DE USO NOMBRE DEL CONTRATISTA (PRODUCTOR O PROVEEDOR) HERE DIRECCIÓN DEL CONTRATISTA (PRODUCTOR O PROVEEDOR) 425 West Randolph Street, Chicago, IL 60606. La presente Información es un objeto comercial, tal y como se define en FAR 2.101, y está sujeta al Contrato de Licencia de Usuario Final en términos del cual fue proporcionada esta Información. © 1987 - 2013 HERE. Derechos reservados. En caso de que el Funcionario Contratante, dependencia del Gobierno Federal, o cualquier otro funcionario público federal se niegue a utilizar la leyenda que se establece en el presente, dicho funcionario contratante, dependencia del Gobierno Federal o funcionario público deberá notificar a HERE antes de buscar derechos adicionales o

alternativos respecto de la Información. © 1987 - 2013 HERE. Derechos reservados



Copyrights

End user terms & conditions / copyrights United States

The data for the United States may include or reflect data provided under license from third party licensors, including data which is subject to the following notices:

HERE holds a non-exclusive license from the United States Postal Service® to publish and sell ZIP+4® information.

©United States Postal Service® 2012. Prices are not established, controlled or approved by the United States Postal Service®. The following trademarks and registrations are owned by the USPS: United States Postal Service, USPS, and ZIP+4.

Canada

The following provisions apply to the data for Canada, which may include or reflect data from third party licensors, including Her Majesty the Queen in Right of Canada (“Her Majesty”), Canada Post Corporation (“Canada Post”) and the Department of Natural Resources Canada (“NRCan”):

Copyright Notice: The data for Canada may include information taken with permission from Canadian authorities, including © Her Majesty, © Queen’s Printer for Ontario, ©

Canada Post, GeoBase®, © Department of Natural Resources Canada. All rights reserved.

Disclaimer; Liabilities: The data for Canada may include or reflect data of licensors, including Her Majesty, Canada Post and NRCan. Such data is licensed on an “as is” basis. The licensors, including Her Majesty, Canada Post and NRCan, make no guarantees, representations or warranties respecting such data, either express or implied, arising by law or otherwise, including but not limited to, effectiveness, completeness, accuracy or fitness for a particular purpose. The licensors, including Her Majesty, Canada Post and NRCan, shall not be liable in respect of any claim, demand or action, irrespective of the nature of the cause of the claim, demand or action alleging any loss, injury or damages, direct or indirect, which may result from the use or possession of the data. The licensors, including Her Majesty, Canada Post and NRCan, shall not be liable in any way for loss of revenues or contracts, or any other consequential loss of any kind resulting from any defect in the data or the Data. You shall indemnify and save harmless the licensors, including Her Majesty, Canada Post and NRCan, and their officers, employees and agents from and against any claim, demand or action, irrespective of the nature of the cause of the claim, demand or action, alleging loss, costs, expenses,

damages or injuries (including injuries resulting in death) arising out of the use or possession of the data.

WARNINGS

The Database may contain inaccurate or incomplete information due to the passage of time, changing circumstances, sources used and the nature of collecting comprehensive geographic data, any of which may lead to incorrect results. The Database does not include or reflect information on - inter alia - travel time and may not include neighborhood safety; law enforcement; emergency assistance; construction work; road or lane closures; road slope or grade; bridge height, weight or other limits; road conditions; special events depending on the navigation system brand you possess.

GOVERNING LAW

This Agreement shall be governed by the laws of the jurisdiction, in which you reside at the date of acquisition of the Database. Should you at that moment reside outside the European Union or Switzerland, the law of the jurisdiction within the European Union or Switzerland where you acquired the Database shall apply. In all other cases, or if the jurisdiction where you acquired the Database cannot be defined, the laws of the Netherlands shall apply. The courts competent at your place of residence at the time you acquired the Database shall have jurisdiction over any dispute arising out of, or



15 Map and system information



relating to this Agreement, without prejudice to HERE' right to bring claims at your then current place of residence.



A

 Activating the system..... 9
C

 Compass..... 34

Controls..... 9, 19

center console..... 19

overview..... 16

remote control..... 20

steering wheel keypad..... 20

Copyright..... 93

D**Destination**

address..... 44

search using a POI..... 46

search using a position on the map..... 50

search using a previous destination..... 48

search using a stored location..... 47

search using a zip code..... 49

search using Home..... 43, 51

search using latitude/longitude..... 49

search using the Internet..... 48

setting..... 43

G**Guidance**

quick guide..... 10

Guidance options..... 67

I

 Intersection/junction..... 44

Itinerary..... 53

intermediate destinations (waypoints).. 54

K**Keypad**

entering characters and making selections..... 28

L

 License agreement..... 87
M

 Map options..... 65
Maps

Compass..... 34

content..... 86

map of current location..... 31

updating..... 86

Voice guidance..... 34

Map view..... 65

Menus..... 36

main menu..... 37

scroll menu (mode)..... 38

shortcuts..... 36

structure (tree)..... 39

N

 Navigation system controls..... 20
O

 Owner's information..... 13

important points..... 13

P

 Points of interest (POI)..... 80
Q

 Questions

FAQ..... 83

R

 Remote control..... 20

Route

alternative routes and route overview . 56

avoid..... 56

detailed information..... 57

map of the remaining route..... 58

recording..... 59

Route options..... 61

Map options..... 65

Route options..... 61

route options – avoiding areas..... 63

system information..... 71

System information..... 71

T

 Traffic information..... 74

extent..... 77

with a specified destination..... 75

with no destination selected..... 74

Travel guide..... 51

V

 Voice control..... 22, 23

help functions and settings 23

languages..... 25

Voice guidance..... 34

S

 Settings

adapting a route..... 64

FAV button..... 71

guidance options..... 67

import/export stored destinations..... 71

