



# V40





WEB EDITION

QUICK GUIDE

## WELCOME TO YOUR NEW VOLVO!

This folder contains a selection of the most common functions in your particular car. The owner's manual and other manuals contain safety instructions and all warning, important and note texts.

The following symbols mean:

-  Different parts are pointed out in the overview images.
  -  Step-by-step instructions.
  -  It is particularly important to read the owner's manual.
  -  Warning, important and note texts, which must be read, are included on the last page.
- Options are marked with an asterisk \*.

The owner's manual is available as a printed manual and digitally in the car's screen, on the Web and as a mobile app. The mobile app contains the whole owner's manual as well as instruction films and has several search paths with text and illustrations. The mobile app can be downloaded to mobile devices from App Store or Google play.

In addition, learn more about your car at [www.volvocars.com](http://www.volvocars.com).



### 01 Starting and driving

- Remote control key
- Keyless\* lock system
- Starting and switching off the engine
- Wipers

### 02 Driver support in your car

- Park Assist Pilot\*
- Lane Keeping Aid\*
- Start/Stop function\*
- Pedestrian protection\*

### 03 Your driving environment

- Adjusting the seat
- Adjusting the steering wheel

### 04 Functions in your car

- Climate system controls
- Headlamp control
- Combined instrument panel
- Infotainment system
- Phone\*
- Internet\*
- External audio device
- Buttons in the centre console
- Settings in the menu system
- Workshop/booking service\*
- ECO\*

### 05 Tips

- Refuelling
- Car care
- Storage spaces
- AUX/USB\* and 12 V sockets

## How does the remote control key work?

01



- 1 Unlocks doors and tailgate and disarms the alarm. The function can be set in MY CAR.
- 2 Locks doors and tailgate and arms the alarm.
- 3 Approach light duration.
- 4 One press unlocks the tailgate, two presses open it slightly.
- 5 Panic function.

The remote control key can store settings for, amongst other things, door mirrors and power driver's seat\* – see owner's manual.



## What do the remote control key indicator lamps\* show?

01



- 1 Green constant light: The car is locked.
- 2 Yellow constant light: The car is unlocked.
- 3 Red continuous light: the alarm has been triggered since the car was locked.
- 4 Red light flashing alternately in both indicator lamps: The alarm was triggered less than 5 minutes ago.



## How does the Keyless\* lock system work?

01



The remote control key can remain in a pocket, for example, the whole time.

### Lock and arm the alarm

- Touch the rear section of one of the outer door handles or press lightly on the smaller of the tailgate's two rubberised buttons.

### Unlock and disarm the alarm

- Grip a door handle and open the door in the usual way or press lightly on the larger of the tailgate's two rubberised buttons.



## How do I start or switch off the engine?

01



### Starting

- 1 Push the remote control key into the ignition switch (does not apply to Keyless drive\*).
- 2 Depress the clutch or brake pedal.
- 3 Briefly press the **START/STOP ENGINE** button.

### Switching off

- 1 Briefly press the **START/STOP ENGINE** button.
- 2 Take the remote control key out from the ignition switch.



## How do I start the windscreen wipers and rain sensor\*?

01



Move the lever downward to start the windscreen wipers and upward for a single sweep.

- 1 Rain sensor On/Off.
- 2 Regulates the sensor sensitivity or the intermittent delay.
- 3 Wiper, rear window - intermittent/normal.

To lift up the wiper blades they must be in service position – see owner's manual.



## How do I use Park Assist Pilot PAP\*?

02



PAP checks the available space, and then steers in the car. Your task is to select the gear, control the speed and brake/stop.

- 1 Activate PAP with a press of the button. Do not drive faster than 30 km/h.
- 2 Follow the instructions that are shown in the combined instrument panel.
- 3 Be prepared to stop the car when the graphics and text advise this.



## What is the function of Lane Keeping Aid LKA\*?

02



If the car is about to cross a side line the LKA will actively steer back into the lane with a slight steering torque in the steering wheel. If the car crosses a side line then LKA will warn you with pulsating vibration in the steering wheel.

- Activate LKA with a press of the button.



## How do I use the Start/Stop function\*?

02



### Manual gearbox

Stop the engine: Dep clutch, move the gear lever into neutral position and release the clutch pedal.

Start the engine: Depress the clutch pedal.

### Automatic gearbox

Stop the engine: Stop the car with the foot brake and then maintain the brake pressure.

Start the engine: Release foot pressure on the foot brake.

Illuminated button lamp indicates that the function is active.



## How does the pedestrian protection work\*?

02

Collision Warning with Auto Brake and Cyclist and Pedestrian Detection, which can warn, brake and/or stop for vehicles, cyclists and pedestrians.

The function is only an aid and does not work in all situations - for example, it does not see cyclists from the side and pedestrians who are shorter than 80 cm or who are partially obscured.

It is important to understand this function - see owner's manual.





- 1 Raise/lower the front of the seat cushion.
- 2 Raise/lower the seat.
- 3 Move the seat forward/backward.
- 4 Tilt the backrest.
- 5 Storing settings for power seat\*.
- 6 Memory buttons for power seat\*.



### Store setting:

Hold the button depressed to store settings while depressing one of the memory buttons. Hold the buttons depressed until a signal is heard and text is shown in the combined instrument panel. This stores the position of the seat as well as the door mirrors.



The memory settings for the power seat and door mirrors can also be stored in the remote control key\* – see owner's manual.



- 1 Release the catch.
- 2 Adjust the steering wheel forward/backward and up/down.
- 3 Activate the catch.





## How do I regulate the temperature with the ECC\*?

04

- 1 Press for individual temperature. Press repeatedly to select the setting for the left, right or both sides. Turn to set the temperature. The centre console's screen shows the selected temperature for each side.
- 2 Press **AUTO** for automatic control of air distribution and other functions. The screen shows **AUTO CLIMATE**.



## How do I defrost the windscreen?

04

- 1 Press to activate the windscreen's electric heating\* - symbol (1) in the screen illuminates.
- 2 The next press also activates maximum airflow against windscreen and side windows - symbols (1) and (2) illuminate.
- 3 The next press switches off both of the functions - no symbol illuminates.

Without electric heating: Press to activate/deactivate the air flow.



## How does the headlamp control's auto mode work?

04

**AUTO** mode provides the following options:

- The daytime running lights automatically switch between daytime running lights and dipped beam.
- Main beam can be activated when dipped beam is switched on.
- Active high beam (AHB)\* - that dims and activates main beam automatically - can be used.
- Tunnel detection\* is activated.



## How is the trip computer operated?

04

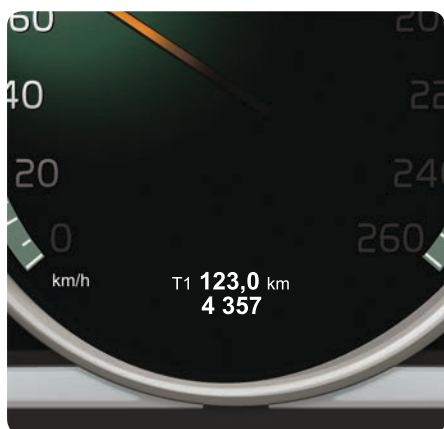


- 1 **OK** opens the trip computer's menus, activates selected option and extinguishes messages.
- 2 Thumbwheel scrolls between the trip computer options.
- 3 **RESET** resets data in the selected trip computer step and goes back in the menu structure.



## How do I reset the trip meter?

04



- 1 Turn the left-hand stalk switch thumbwheel to show trip meter T1 or T2.
- 2 Give a long press on the **RESET** button in order to reset the trip meter shown.

## How do I change the appearance of the car's displays\*?

04



Different themes can be selected with the digital\* combined instrument panel, such as Performance or Eco.

To change the theme:

- 1 Press the left-hand stalk switch **OK** button after the engine has been started.
- 2 Turn the lever's thumbwheel in order to select menu option **Themes** and press **OK**.
- 3 Turn the thumbwheel to select a theme and press **OK** to confirm.

The theme is stored in the remote control key memory\* – see owner's manual.





## How do I switch on and off the Infotainment system?

04




- 1 A short press activates the system.
- 2 A long press (until the screen switches off) deactivates.

To switch off the sound: Give a short press - the next press reactivates.

Note that the whole of the Sensus system (including navigation\* and phone functions\*) is started/switched off at the same time.

## How do I navigate in the infotainment system? 04



- 1 Press **RADIO**, **MEDIA**, **MY CAR**, **NAV\***, **TEL\*** or  to select the main source. The normal view for the last active source is shown in this position.
- 2 Press **OK/MENU** or the thumbwheel\* in the steering wheel to access the selected source's main menu.
- 3 Turn **TUNE** or the thumbwheel to navigate in the menus.
- 4 Press **OK/MENU** or the thumbwheel to make a selection in the menus.

Briefly press **EXIT** to go back in the menu system, cancel a function or delete entered characters.

Give a long press on **EXIT** to go back to normal view, or to go from normal view to the main source view.

### Tips:

To go to the shortcut menu from normal view, press once on the main source button. Press again to go back to normal view.



For more information about operating the system – see owner's manual.



## How do I connect a Bluetooth® phone\*?

04



- 1 In the normal view for the phone source, press **OK/MENU**.
- 2 Select **Make car discoverable** and confirm with **OK/MENU**.
- 3 Activate Bluetooth® in the mobile phone. Search for and connect the car to the phone.
- 4 Follow the instructions in the mobile phone and the screen.

The phone is now connected and can be controlled from the car.

If registering the phone does not succeed – see owner's manual.



## How do I connect to the Internet\*?

04



- 1 Connect the mobile phone to the car (see "How do I connect a Bluetooth® phone?") and activate tethering in the phone.
- 2 In the normal view for the MY CAR source, press **OK/MENU**, select **Settings > Internet settings > Connect through**. Select one of the options **Car modem**, **Wi-Fi** or **Bluetooth**.

In future the car will automatically connect via the selected Internet connection.

For more information about connection - see owner's manual.




## What services do I get with Volvo ID\*?

04



Volvo ID is your personal ID registered to the car which can give you access to various services such as My Volvo web and the ability to send an address from the map service on the internet directly to the car.

Register or manage your Volvo ID as follows:

- 1 Press the Connect button .
- 2 Select **Apps > Settings** and follow the onscreen instructions.

For further information about Volvo ID - see owner's manual.





## How do I use apps when the car is connected to the Internet\*? 04

When the car is connected to the Internet, apps for music services, web radio, navigation services and simple web browsers can be used.

- 1 Press the Connect button .
- 2 Select **Apps** and press **OK/MENU** in order to show the available apps.
- 3 Select the app and confirm with **OK/MENU**.

Some apps require login using a separate account from the app/service supplier. Use existing account or register again. Follow the on-screen instructions.



## How do I make a call\*? 04

- 1 In the normal view for the phone source, enter the required number or turn the thumbwheel on the steering wheel downward in order to access the phone book, and upward for the call register.
- 2 Press the thumbwheel to dial.

The call is interrupted with a press on **EXIT**.

For more ways to make a call with the phone – see owner's manual.



## How do I answer the phone\*? 04

- Press the thumbwheel to accept incoming calls.

The call is rejected/interrupted with a press on **EXIT**.

For more ways to answer the phone – see owner's manual.



## How do I connect an external audio device? 04



- 1 Connect an external device via the AUX or USB\* inputs in the centre console's storage compartment.
- 2 In the normal view for the media source, press **MEDIA** in the centre console.
- 3 Turn **TUNE** to the desired audio source and press **OK/MENU**.

For other connections of an external device – see owner's manual.



## How do I set a GPS\* destination? 04



- 1 Press **NAV** to start the navigation system – a map is shown.
- 2 Press once again on **NAV** and select **Enter address** with **OK/MENU**.
- 3 Enter a search criterion/search criteria using the daisy wheel or the centre console's numeric keypad.
- 4 Then select **Set single destination** or **Add as way-point** and press **OK/MENU**.

For more information and market deviations – see the RTI manual\*.

## What settings can be made in the menu system? 04



Many of the car's functions are handled in MY CAR, e.g. settings for clock, door mirrors and locks.

See the earlier heading "How do I navigate in the infotainment system?" for which buttons to use.



## How do I adjust the clock?

04



- 1 In the normal view for the MY CAR source, press **OK/MENU**.
- 2 Select **Settings > System options > Time settings**.
- 3 Turn **TUNE** to **Auto time** and press **OK/MENU** to activate automatic setting of the time.

Make sure you select the current location in order to set the correct time in the car.

## How do I make a call to my workshop or book a service\*?

04



- In the normal view for the MY CAR source, press **OK/MENU** and select **Service and repair**.

Under **Service and repair** is information about your chosen workshop that you registered in the My Volvo web portal. In **Dealer information** there is the option to call and send a booking request to the workshop (also available via My Volvo web). There is also the option to update workshop information and set the workshop as destination.

Only applies to certain markets.



## What does ECO\* do?

04



On press on **ECO** activates an optimal fuel-efficient driving program including, amongst other things, the following changes:

- Start/Stop – the engine can auto-stop before the car is stationary.
- Eco Coast – engine braking ceases and the car coasts.
- Deactivation or reduction of certain climate functions.



## How do I refuel?

05



- 1 With the car unlocked, open the fuel filler flap by pushing lightly on the rear part of the flap and release.
- 2 Fold out the flap.
- 3 Insert the pump nozzle in the fuel filler opening.
- 4 After fuelling: Wait 5–8 seconds before removing the pump nozzle.

## How should I wash the car?

05



Handwashing is gentler on the paintwork than an automatic car wash. The paintwork is also more sensitive when it is new. For this reason, handwashing is recommended during the first few months with a new car.

Use clean water and a washing sponge. Remember that dirt and grit can scratch the paintwork.

## How should I clean the leather upholstery\*? 05

Leather requires regular care in order to maintain appearance. For this reason, the leather upholstery should be treated using the Volvo Leather Care kit 1-4 times per year. The Volvo Leather Care kit is available for purchase from a Volvo dealer.



## Where are the storage spaces located?

05

Shown here are some of the car's storage spaces.



The owner's manual shows the location of more storage spaces.



## Where are the AUX/USB\* and 12V sockets located?

05

The remote control key must be at least in key position I in order for the 12V sockets in the passenger compartment to work. The 12V socket\* in the cargo area is always live.



#### How does the Keyless\* lock system work?



The use of gloves may prevent the Keyless function in the door handles. Electromagnetic fields and screening can interfere with the Keyless function. Do not place/store the remote control key near a mobile phone or metal objects.

#### How do I start or switch off the engine?



After a cold start the idling speed is high irrespective of outside temperature. It is part of Volvo's efficient emissions system. During cold starting, certain diesel engines have a delayed start due to preheating.

#### How do I use Park Assist Pilot PAP\*?



PAP does not work in all situations but is designed simply as a supplementary aid. The driver always bears ultimate responsibility for ensuring that the vehicle is driven safely, and for having an overview of the surroundings and other road users approaching or passing while parking.

#### What is the function of Lane Keeping Aid LKA\*?



LKA is only a driver tool, and does not work in all driving situations and traffic, weather and road conditions. The driver is always responsible that the vehicle is driven in a safe manner and that laws and traffic regulations in force are followed.

#### How does the pedestrian protection work\*?



The function cannot detect all pedestrians in all situations and does not see, for example, partially obscured pedestrians, people in clothing that hides their body contour or pedestrians shorter than 80 cm. The function cannot detect all cyclists in all situations and does not see, for example, partially obscured cyclists, cyclists with concealed body contours or cyclists approaching from the side. The driver is always responsible that the vehicle is driven in a correct manner and with a safety distance adapted to the speed.

#### How do I adjust the seat?



Adjust the driving position of the driver's seat correctly **before** setting off – never while driving. Make sure that the seat is in locked position in order to prevent personal injury in the event of heavy braking or an accident.

#### How do I adjust the steering wheel?



Adjust the steering wheel (after adjusting the seat) **before** setting off – never while driving.

#### How do I connect to the Internet\*?



Using the Internet involves transferring data (data traffic), resulting in a charge to your network operator. Contact them about the cost for data traffic. To connect via car modem, fit your personal SIM card in the holder that is fitted in the glovebox and then select the connect via Car modem option in MY CAR. To connect to the Internet, enter the SIM card's PIN code. To avoid having to enter the PIN code every time the car is started, the PIN code lock can be deactivated under the Car modem option by deselecting Lock SIM card.

#### How should I clean the leather upholstery\*?



Some coloured clothing (e.g. jeans and suede garments) may discolour the upholstery. Never use strong solvents – they could damage the upholstery.

#### Where are the AUX/USB\* and 12 V sockets located?



Maximum current take-off is 10 A (120 W) in each socket.